

CURRITUCK EXTENSION CENTER

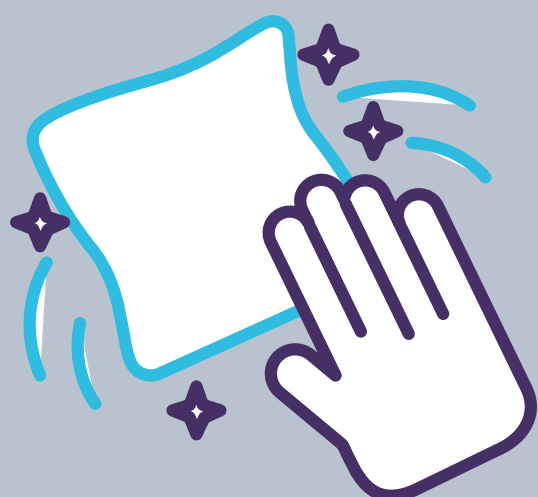
Facility Guidelines - COVID-19 Response

HYGIENE

Stay home if you are sick or in a high risk group

Wash hands

Cough/sneeze into elbow or tissues



SANITATION

Interior doors to remain open

Entry through front door only

Surfaces should be sanitized following use

DISTANCING

Room capacity is limited to 50%

Chairs should be spaced 6ft apart

Occupants to maintain 6ft distance



ADDITIONAL MEASURES

Guidelines should be shared with all building occupants at the start of all meetings/events

All guest to the building will provide name and contact information

Meetings will be limited in attendance to gathering number restrictions dictated by NC governor

Face masks are encouraged if distancing guidelines cannot be met

