

CREATE AN INSECT COLLECTION

TOOLKIT

- Insect nets
- Gallon zip-lock baggies
- Ethyl acetate / acetone
- Eye dropper
- Plaster of paris
- Wide-mouth glass jar with screw lid
- Insect pins
- Styrofoam



Figure 1-7 An aerial net lets you collect flying insects.



Figure 1-8 Pitfall traps collect insects that crawl on the ground or live in the soil.

Creating your own insect collection gives you a chance to learn about the wide and wonderful world of insects. A collection preserves insects and helps you to identify them, recognize body parts and learn how they live their lives, *Figure 1-6*.

CAPTURING INSECTS

Insects are all around us — on land, in the air, in the ground and in the water.

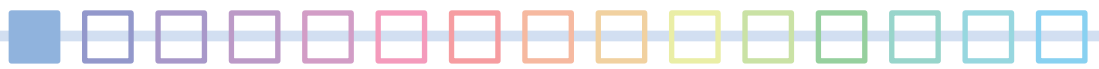


Figure 1-6 Collections teach you about the diversity of insects and what they do in the world.

Collecting insects can be as simple as capturing insects and putting them inside a gallon zip-lock baggie. Find the best collecting methods and tools that work for you. Here are a few ideas to get you started:

1. **Use an aerial net or a sweep net.** Aerial nets are made of mesh and are good for flying insects. Sweep nets, made of heavy canvas, are used to sweep vegetation for insects on leaves, *Figure 1-7*. Also try an aquatic net for insects living in water.
2. **Set a trap.** Many soil-dwelling or crawling insects can fall into a type of trap called a pitfall trap, *Figure 1-8*. You can also attract insects to traps by using light or special pheromones.

Put the insects in the freezer to kill them in preparation for pinning. You can also make a “killing jar” to catch and kill insects. While the name is a little scary, killing jars are a tool that entomologists use to kill insects without damaging them.



CREATE AN INSECT COLLECTION

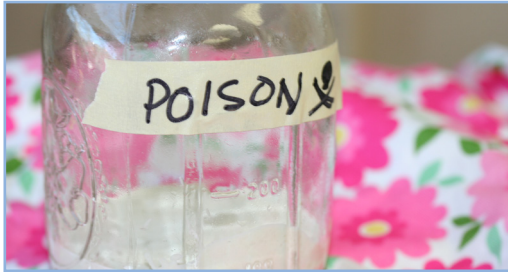


Figure 1-9 The chemicals in a killing jar can be harmful. Only use with adult supervision.

SAFETY NOTE!



Ethyl acetate is a common chemical used by insect collectors that is placed in the bottom of the jar (in plaster of paris or cotton balls) and after killing the insect, will keep it flexible for pinning. Ethyl acetate can be ordered from biological supply companies, or you could use nail polish remover in its place. Sometimes ethyl acetate or acetone (nail polish remover) kills insects too slowly, and your “dead” insects will actually revive even if they appear dead. In preparation for pinning, you can also kill insects by putting them in the freezer.

CONSTRUCTION OF KILLING JAR:

STEP 1: Use a clean, dry container. Wide-mouth containers like mason jars, pickle jars or peanut butter jars work well for this purpose.

STEP 2: Mix plaster of paris according to the labeled instructions and pour the mixture to a depth of about 1 inch into the jar, **Figure 1-9**. The plaster of paris is used to absorb ethyl acetate or acetone.

STEP 3: Allow the plaster of paris to set and dry and then add ethyl acetate slowly to the jar until the plaster of paris is saturated.

STEP 4: Label the jar with the word “poison”

USING THE KILLING JAR

STEP 1: You can catch insects directly in the killing jar, or you can capture them another way and place them in the jar. Other ways of collecting insects include nets, additional jars, plastic baggies, or even your hands (use caution with stinging and biting insects!).

STEP 2: Only put similar insects together. Bigger insects like beetles can bang around and damage small, delicate insects like flies.

STEP 3: Keep a separate jar for moths and butterflies. They have delicate scales that can also be easily destroyed.

STEP 4: Keep the killing jar closed whenever possible. Fumes from ethyl acetate won’t kill you, but you should still be careful.

STEP 5: Absorbent paper like tissue or chem-wipes can help keep the jar dry.

STEP 6: Killing jars need to be “recharged” before each collecting trip. You can do this by adding a couple of drops of ethyl acetate to the plaster of paris.



CREATE AN INSECT COLLECTION

PINNING INSECTS

STEP 1: Look at *Figure 1-10* and find the insect that looks most like the one you have collected. Look at the dot on the insect's thorax and be sure to place your entomological pin through your insect in the same place.

STEP 2: Many adult insects may be pinned directly through the middle of the thorax.

STEP 3: As you pin your insect, leave 10mm between the top of the pin and the body of your insect, *Figure 1-11*.

STEP 4: When you position the legs and antennae, think about how you want your insect to look and how you can keep the antennae from breaking, *Figure 1-12*. Also think about how much room you will have in your insect box.

STEP 5: Insects can be damaged or broken easily. Be gentle as you pin your insect and remember that once they are fully dry, they are very fragile.

STEP 6: Fragile or tiny insects (such as mosquitoes) that are too small for a pin will need to be glued to the point of a small triangle punch-out that has already been stuck through with a pin, *Figure 1-13*.

STEP 7: Soft-bodied insects and larvae are not pinned but are preserved in vials with alcohol.

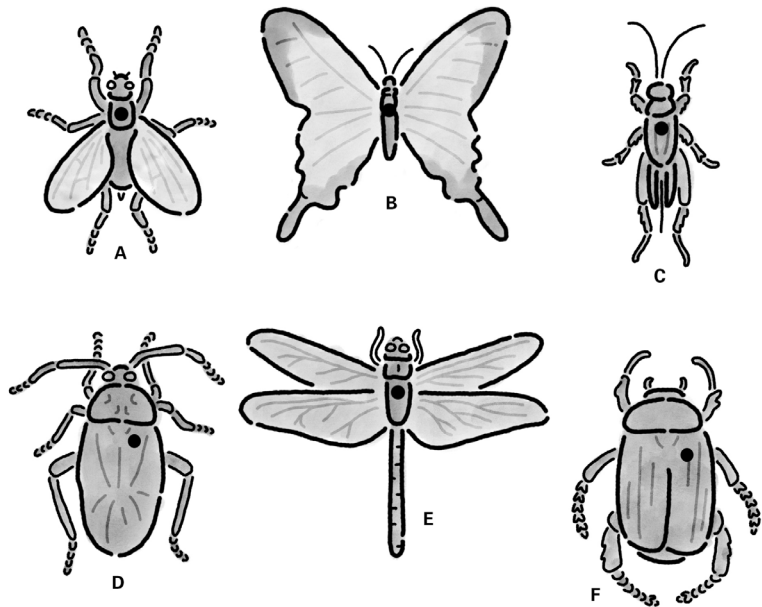


Figure 1-10 The placement of the insect pin into the thorax is slightly different depending on the insect order.

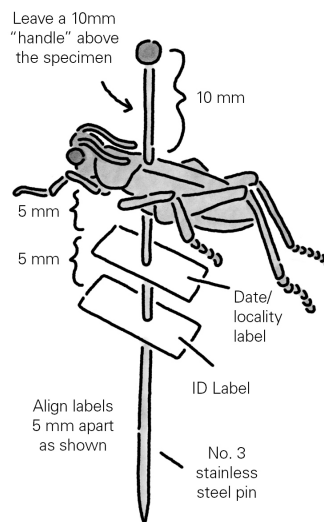


Figure 1-11 Leave space at the top of the pin so you can easily handle your pinned insect.



Figure 1-12 Use insect pins to arrange the legs, antennae, and other body parts to look realistic.

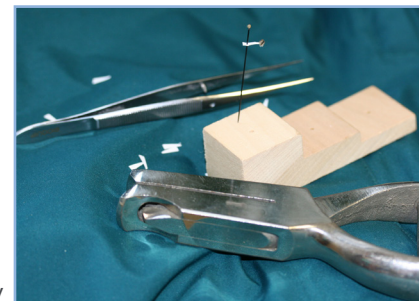
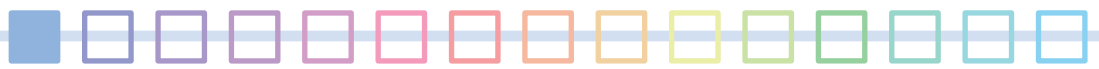


Figure 1-13 A triangle punch cuts small triangles on which tiny insects can be glued.



CREATE AN INSECT COLLECTION

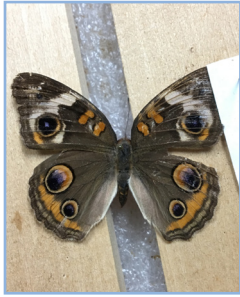


Figure 1-14 Spreading wings helps with butterfly identification.

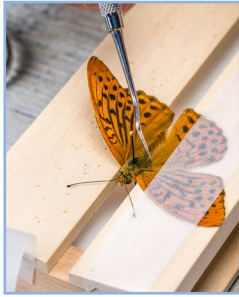


Figure 1-15 Spreading boards are important tools.

BUTTERFLY AND MOTH PINNING AND WING SPREADING

Moths and butterflies look better and are easier to identify if their wings are spread properly, *Figure 1-14*. You can use a **spreading board** to do this, *Figure 1-15*. Adjustable spreading boards are available from a biological supply house, or you can make one from styrofoam blocks.



Figure 1-16



Figure 1-17.

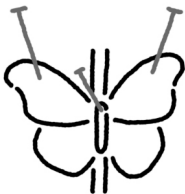


Figure 1-18

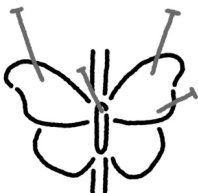


Figure 1-19.

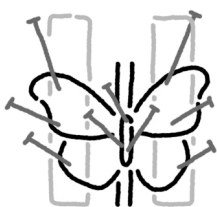


Figure 1-20.

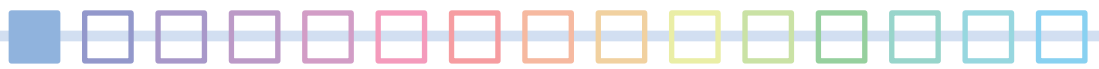
STEP 1: Put an insect pin through the center of the thorax of a freshly killed butterfly, *Figure 1-16*. If the insect has dried, use a relaxing jar to soften it. Leave 1/4 inch of the pin exposed above the thorax. Make sure the insect does not tip from side to side or from front to back on the pin.

STEP 2: Push the pin straight down in the center of the slot of your pinning board until the outstretched wings are just level with the surface of the pinning board, *Figure 1-17*.

STEP 3: Insert an insect pin lightly in each front wing near the front margin and just behind one of the heavy wing veins. Use the tip of a pin to gently move the front wings forward on the spreading board until the hind margins of the front wings are in a straight line, pointing straight out away from the body, *Figure 1-18*.

STEP 4: With a pin placed behind a heavy vein in the hind wing, gently move each hind wing until the gap between the front wing and hind wing is closed to just a notch, *Figure 1-19*.

STEP 5: Cut some narrow strips of paper and lay them over the wings. Pin them in place as shown, *Figure 1-20*. Remove the other pins that are through the wings. The pins holding the paper strips in place should not go through the wings but should be close to them to hold down the wings and prevent them from slipping out of place. The **specimen** should remain on the board to dry from four to 10 days.



CREATE AN INSECT COLLECTION

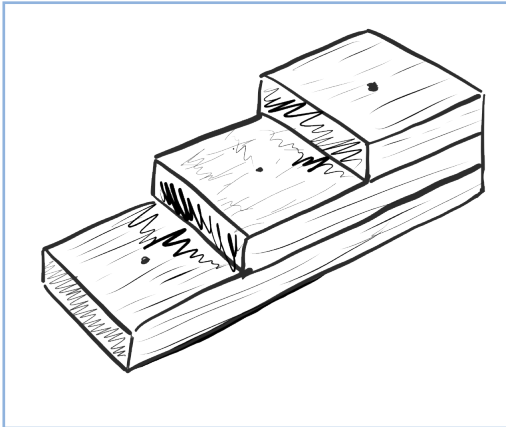


Figure 1-21 A pinning block evening spaces labels on the insect pin.

USING A PINNING BLOCK

Help your collection to appear uniform by mounting specimens using a **pinning block**, *Figure 1-21*.

STEP 1: Put the point of the pin bearing a freshly pinned insect into the deepest hole of the pinning block. Push the insect upward on the pin until the insect is in contact with the block.

STEP 2: Put the top-most label on the pin (see labeling). Then put the point of the pin in the next deepest hole. Repeat for the next label.

PRESERVING SOFT-BODIED INSECTS

STEP 1: To preserve caterpillars, grubs, and maggots, first put them in boiling water for 1 to 2 minutes.

STEP 2: After boiling, immediately place them in vials of 70 to 80 percent ethyl or isopropyl alcohol solution, *Figure 1-22*. Boiling soft-bodied insects can keep them from decaying. After a day or two, if the liquid becomes murky, transfer the specimens permanently to a fresh alcohol solution.

STEP 3: Specimens in vials must be labeled exactly as described for pinned specimens (see the “Specimen Labeling” section below), with two exceptions. Labels should be written with a soft-lead pencil or with India ink to prevent the writing from running. Use a single label for all the information and include within the vial. Longer labels may be cut, and information can be ordered from the top toward the bottom of the label.



Figure 1-22 Soft-bodied insects are best preserved in a clear vial filled with alcohol. Ask an adult for help.



CREATING AN INSECT COLLECTION

SPECIMEN LABELING

All specimens should be labeled with the location where they were found and date of their capture. A good label also tells specifically where (in a meadow, garden, forest), when (time of day), and by whom the insect was collected, *Figure 1-23*.

STEP 1: Labels should be made from cardstock (or heavy paper) and reasonably small (no larger than ½-inch wide by 1-inch long).

STEP 2: Start by pinning the insect. Leave ⅜ inches (10mm) between the top of the insect and the head of the pin so there is enough room to handle the specimen.

STEP 3: Leave ¼ inch (5mm) between labels when possible. You may want to use a pinning block.

STEP 4: Then pin a label with the date, location, and collector name.

STEP 5: The last label includes all the identification information that you know, *Figure 1-24*.

OPTIONAL: Next pin the host information label. This label is optional and includes information such as what plant the insect was eating when collected, or if it was found around a window or porch light.

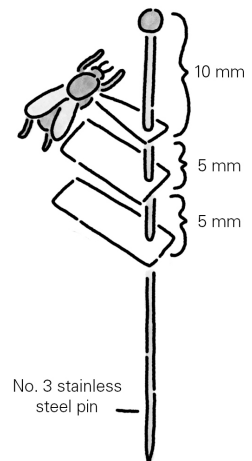


Figure 1-23 Evenly space your labels.

ARRANGING INSECTS

STEP 1: Insect specimens should be arranged within **families** with a label in the box identifying the family.

STEP 2: Families should be grouped by **order** with a single label for the order. This minimizes the number of labels you must prepare.

STEP 3: Specimens should be arranged in neat rows with all labels facing the same direction so they are readable from the left side of the box.

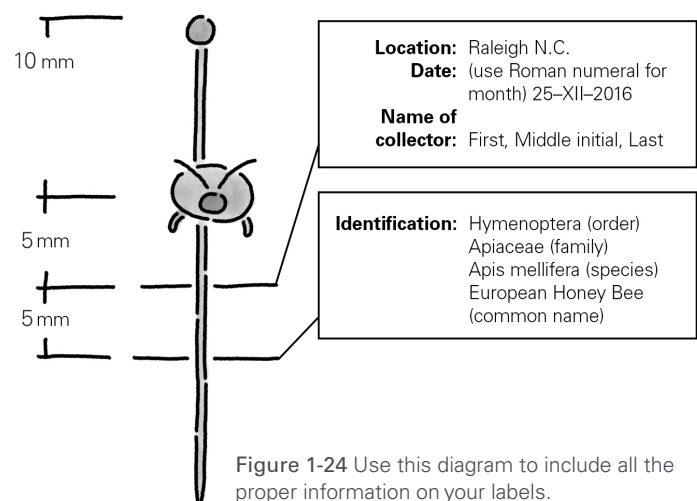


Figure 1-24 Use this diagram to include all the proper information on your labels.