

# 2019



# HORTICULTURE RESOURCE GUIDE



**Produced by:**

**NC STATE** EXTENSION

Master Gardener | Harnett County

Volunteer Association

**Promoting healthy landscapes, productive gardens and a safe environment**





# Introduction



The Extension Master Gardener<sup>SM</sup> Volunteer Association of Harnett County compiled this Horticulture Resource Guide under the guidance of NC Cooperative Extension Horticulture Agent, Selena Mckoy.

The mission of Harnett County Cooperative Extension, in cooperation with NC State University and North Carolina A&T University, is to help individuals, families and communities to put research-based knowledge to work to improve their lives.

We hope you find this resource guide informative to your horticulture needs.

For assistance please contact us at:

Selena McKoy  
Horticulture Extension Agent  
126 Alexander Dr.  
Lillington, NC 27546  
910-893-7530  
[sdmckoy@ncsu.edu](mailto:sdmckoy@ncsu.edu)

**NC STATE** EXTENSION

Master Gardener | Harnett County  
Volunteer Association



The Extension Master Gardener<sup>SM</sup> program allows the Cooperative Extension office to extend education to an ever-increasing gardening audience. It also provides a highly visible way to meet the public demand for information and to develop a strong clientele support group.

Master Gardener<sup>SM</sup> Volunteers are members of the local community who take an active interest in their lawns, trees, shrubs and gardens. What really sets Master Gardener<sup>SM</sup> Volunteers apart from other home gardeners is their special training in horticulture and their willingness to educate others. In exchange for their training, Master Gardener<sup>SM</sup> Volunteers devote time as volunteers. Working through a Cooperative Extension office, they provide horticulture-related, research-based information and resources to the public. Call us at 910-893-7530 Monday thru Friday from 9:00am to 3:00pm. If we are out, leave a message or email us at [mastergardener@harnett.org](mailto:mastergardener@harnett.org) and we will respond.

### **Mission Statement**

The Extension Master Gardener<sup>SM</sup> Volunteers of Harnett County (EMGVs) are trained in home gardening by North Carolina Cooperative Extension. EMGVs share what they learn with residents of all ages through activities that promote healthy landscapes, productive gardens and a safe environment.

### **Who Volunteers?**

Individuals with an interest in both gardening and volunteer service are potential candidates for the program. No previous formal training is necessary. Volunteer training is held during the day. Most volunteer opportunities are available during the day or on weekends.

### **Training**

*Usually held once a year in Lillington.* Initial training consists of 40 hours of mostly classroom training. Topics covered include lawns, vegetables, pesticides, wildlife-friendly plants, pruning, design and much more. Participants in the program must complete the training class and volunteer a minimum of 40 hours the first year through the Harnett County Cooperative Extension Center.

### **Volunteering**

First year volunteers perform one hour of volunteer time for each hour of training received. During the second year, and each year thereafter, volunteers donate 20 hours per year in addition to receiving valuable advanced training. Volunteer activities include answering gardening questions from the public, performing community outreach, organizing resources, assisting with demonstration gardens and much more.

For more information please contact :

**Selena McKoy, Horticulture Extension Agent**  
 910-893-7530  
 126 Alexander Dr.  
 Lillington, NC 27546  
[sdmckoy@ncsu.edu](mailto:sdmckoy@ncsu.edu)



# Index of Products and Services

<b>Annual Plants</b>			<b>Fencing</b>			<b>Grass Seed</b>		
Ace Hardware	Harnett	7	Champion Milling Co.	Harnett	8	Jackson Brothers Produce	Lee	20
Champion Milling Co.	Harnett	8	David Potter Fence Co.	Harnett	8	Thomas Farm Service	Lee	20
Dragonfly Florist, LLC	Harnett	9	Medlin & Dorman	Johnston	19	Cavanaugh Agri Sales	Sampson	22
Emma's Garden	Harnett	9	Broadway Hardware	Lee	20	<b>Gravel/ Decorative Rock</b>		
Harnett Central High School	Harnett	10	<b>Fertilizers</b>			Ace Hardware	Harnett	7
Jernigan's Nursery	Harnett	10	Ace Hardware	Harnett	7	Landscapes by Veronica	Harnett	11
Johnson Farms	Harnett	10	Barefoot's Hardware	Harnett	7	Lockamy's Grading	Harnett	11
Landscapes by Veronica	Harnett	11	Champion Milling Co.	Harnett	8	Miller's Landscaping Supplies, LLC	Harnett	12
Old Stage Road Nursery	Harnett	12	Jarco Supply	Harnett	10	RLT Construction	Harnett	13
Overhills High School	Harnett	12	Jernigan's Nursery	Harnett	10	Tri County Scapes	Harnett	15
Stewart's Greenhouse	Harnett	14	Miller's Landscaping Supplies, LLC	Harnett	12	Elevation Plant Nursery	Johnston	17
Tarheel Nursery	Harnett	15	S & S Contract Landscaping	Harnett	13	Stephenson's Landscaping	Johnston	19
Tart's Produce	Harnett	15	Tarheel Nursery	Harnett	15	Triangle Landscape Sup.	Johnston	19
Triton High School	Harnett	15	Watkins Farm Service	Harnett	16	Gross Farms Nursery	Lee	20
Vickie's Greenhouse/Garden Ctr	Harnett	15	Womble, J. E. & Sons	Harnett	16	Tramway Stone & Mulch	Lee	21
Western Harnett HS	Harnett	16	Coor Farm Supply	Johnston	18	The Country Market Store	Wake	23
Womble, J. E. & Sons	Harnett	16	Medlin & Dorman	Johnston	19	MOSS' Const. Co.	Wake	23
Four Seasons Florist	Johnston	18	Broadway Hardware	Lee	20	Soil Toppers	Wake	23
Medlin & Dorman	Johnston	19	Dale's Garden Center	Lee	20	<b>Groundcovers</b>		
Big Bloomers Flower Farm	Lee	20	Jackson Bros. Produce	Lee	20	Broadwell's Nursery	Harnett	8
Broadway Hardware	Lee	20	Thomas Farm Service	Lee	20	Jernigan's Nursery	Harnett	10
Dale's Garden Center	Lee	20	Cavanaugh Agri Sales	Sampson	22	Old Stage Rd Nursery	Harnett	12
Jackson Bros. Produce	Lee	20	The Garden Hut	Wake	22	Rabbit Ridge Nursery	Harnett	13
Tramway Stone & Mulch	Lee	20	Twin Oaks Feed & Supply	Wake	23	Saturday Azalea	Harnett	13
Baskets and Flowers	Sampson	20	<b>Fire Ant Control</b>			C & J Nursery	Johnston	18
Campbell Road Nursery	Wake	21	Ace Hardware	Harnett	7	Elevation Plant Nursery	Johnston	18
The Country Market Store	Wake	22	M & W Landscaping	Harnett	11	McLamb Nursery	Johnston	19
The Garden Hut	Wake	22	Watkins Farm Service	Harnett	16	Stephenson's Landscaping	Johnston	19
Twin Oaks Feed and Supply	Wake	23	Womble, J. E. & Sons	Harnett	16	Big Bloomers Flower Farm	Lee	20
<b>Aquatic Plants</b>			ChemPro	Johnston	18	Baskets & Flowers	Sampson	22
Landscapes by Veronica	Harnett	11	Twin Oaks Feed & Supply	Wake	23	The Garden Hut	Wake	22
Vickie's Greenhouse/Garden Ctr	Harnett	15	<b>Firewood</b>			Olive's Tree Farm	Wake	23
Water & Garden. Creations	Johnston	19	Ace Hardware	Harnett	7	<b>Hand Tools</b>		
Tramway Stone & Mulch	Lee	20	Bryant Grading and Landfill	Harnett	8	Ace Hardware	Harnett	7
<b>Arborist</b>			Snell Tree Experts, LLC	Harnett	14	Barefoot's Hardware	Harnett	7
Snell Tree Experts, LLC	Harnett	14	Jackson Bros. Produce	Lee	20	Champion Milling Co.	Harnett	8
<b>Bean Shelling / Pecan Cracking</b>			The Country Market Store	Wake	22	Jernigan's Nursery	Harnett	10
Betty's Pecan Cracking	Harnett	7	MOSS' Const. Co.	Wake	22	Womble, J. E. & Sons	Harnett	16
Smith's Pecan Cracking	Harnett	14	Soil Toppers	Wake	23	Medlin & Dorman	Johnston	19
Tart's Produce	Harnett	15	<b>Florist</b>			Broadway Hardware	Lee	20
Little River Pecans	Cumberland	17	Angier Florist	Harnett	7	Dale's Garden Center	Lee	20
Medlin & Dorman	Johnston	19	Beyond Petals Florist & Gifts	Harnett	7	Soil Toppers, Inc.	Wake	23
Broadway Hardware	Lee	20	Dragonfly Florist, LLC	Harnett	9	Twin Oaks Feed and Supply	Wake	23
Gross Farms	Lee	20	Emma's Garden	Harnett	10	<b>Hanging Baskets</b>		
Spivey Produce	Lee	20	Jabez Floristry	Harnett	10	Ace Hardware	Harnett	7
<b>Christmas Trees</b>			Four Seasons Florist	Johnston	18	Broadwell's Nursery	Harnett	8
Jernigan's Nursery	Harnett	10	Rabbit Ridge Nursery	Harnett	13	Champion Milling Co.	Harnett	8
Johnson Farms	Harnett	10	Tart's Produce	Harnett	15	Dragonfly Florist, LLC	Harnett	9
Landscapes by Veronica	Harnett	11	C & J Nursery	Johnston	18	Jernigan's Nursery	Harnett	10
Tart's Produce	Harnett	15	Woodard Pecan Nursery	Johnston	20	Overhills High School	Harnett	12
Dale's Garden Center	Lee	20	<b>Grass Seed</b>			Stewart's Greenhouse	Harnett	14
Gross Farms	Lee	20	Ace Hardware	Harnett	7	Tarheel Nursery	Harnett	15
Jackson Bros. Produce	Lee	20	Champion Milling Co.	Harnett	8	Tart's Produce	Harnett	15
The Country Market Store	Wake	22	Jarco Supply	Harnett	10	Triton High School	Harnett	15
<b>Drainage Supplies</b>			Landscapes by Veronica	Harnett	11	Vickie's Greenhouse/Garden Ctr	Harnett	15
Ace Hardware	Harnett	7	Watkins Farm Service	Harnett	16	Four Seasons Florist	Johnston	18
Adams an Oldcastle Co.	Harnett	7	Womble, J. E. & Sons	Harnett	16	Broadway Hardware	Lee	20
Jarco Supply	Harnett	10	Medlin & Dorman	Johnston	19	Jackson Bros Produce	Lee	20
Womble, J. E. & Sons	Harnett	16	Broadway Hardware	Lee	20	Baskets and Flowers	Sampson	21
Adams an Oldcastle Co.	Cumberland	16	Dale's Garden Center	Lee	20	The Country Market Store	Wake	22
Medlin & Dorman	Johnston	19				The Garden Hut	Wake	22
Tramway Stone & Mulch	Lee	21						

# Index of Products and Services

<b>Hardscape</b>			<b>Landscape Maintenance</b>			<b>Perennial Plants</b>		
Adams an Oldcastle Co	Cumberland	16	Elevation Plant Nursery	Johnston	17	C & J Nursery	Johnston	17
Adams an Oldcastle Co	Harnett	7	Tuffvision Landscape, Inc.	Lee	21	Elevation Plant Nursery	Johnston	17
Green South Landscaping Co	Harnett	9	<b>Landscape Ornamentation</b>			Four Seasons Florist	Johnston	17
Landscapes by Veronica	Harnett	11	Ace Hardware	Harnett	7	McLamb Nursery	Johnston	18
Royal Landscaping Services	Harnett	13	Jernigan's Nursery	Harnett	10	Big Bloomers Flower Farm	Lee	19
S & S Contract Landscaping	Harnett	13	Landscapes by Veronica	Harnett	11	Broadway Hardware	Lee	19
Sandhills Comm Lawn Service	Harnett	13	Old Stage Road Nursery	Harnett	12	Dale's Garden Center	Lee	19
Triangle Landscape Supplies	Johnston	21	Elevation Plant Nursery	Johnston	18	Jackson Bros. Produce	Lee	20
Tramway Stone & Mulch	Lee	21	Lakeview Daylily & Koi Farm	Johnston	19	Tramway Stone & Mulch	Lee	20
The Country Market Store	Wake	23	Big Bloomers Flower Farm	Lee	20	Baskets & Flowers	Sampson	21
MOSS' Const. CO.	Wake	23	Tramway Stone & Mulch	Lee	21	Campbell Road Nursery	Wake	21
Soil Toppers, Inc.	Wake	23	The Country Market Store	Wake	22	The Garden Hut	Wake	22
<b>Herb Plants</b>			The Garden Hut	Wake	22	<b>Pesticides</b>		
Jernigan's Nursery	Harnett	10	Soil Toppers, Inc.	Wake	23	Ace Hardware	Harnett	7
Landscapes by Veronica	Harnett	11	<b>Mulch &amp; Pine Straw</b>			Barefoot's Hardware	Harnett	7
Overhills High School	Harnett	12	Ace Hardware	Harnett	7	Champion Milling Co.	Harnett	8
Stewart's Greenhouse	Harnett	14	Bryant Grading and Landfill	Harnett	8	Jarco Supply	Harnett	10
Tarheel Nursery	Harnett	15	Denny Lee's Mulch	Harnett	9	Tarheel Nursery	Harnett	15
Vickie's Greenhouse/Garden Ctr	Harnett	15	Landscapes by Veronica	Harnett	11	Watkins Farm Service	Harnett	16
Womble, J. E. & Sons	Harnett	16	Lillington Small Engine	Harnett	11	Womble, J. E. & Sons	Harnett	16
Elevation Plant Nursery	Johnston	18	Miller's Landscaping Supplies, LLC	Harnett	12	Coor Farm Supply	Johnston	18
Medlin & Dorman	Johnston	19	S & S Contract Landscaping	Harnett	13	Medlin & Dorman	Johnston	19
Big Bloomers Flower Farm	Lee	20	Snell Tree Experts	Harnett	14	Big Bloomers Flower Farm	Lee	20
Broadway Hardware	Lee	20	Tart's Produce	Harnett	15	Broadway Hardware	Lee	20
Dale's Garden Center	Lee	20	Tri County Scapes	Harnett	15	Dale's Garden Center	Lee	20
Jackson Bros. Produce	Lee	20	Womble, J. E. & Sons	Harnett	16	Jackson Bros. Produce	Lee	20
<b>Irrigation Installation &amp; Supplies</b>			Lakeview Daylily & Koi Farm	Johnston	19	Thomas Farm Service	Lee	20
Green South Landscaping Co	Harnett	9	Medlin & Dorman	Johnston	19	Baskets & Flowers	Sampson	21
Steve's Irrigation	Harnett	14	Stephenson's Landscaping	Johnston	19	Cavanaugh Agri Sales	Sampson	21
<b>Landscape Design</b>			Triangle Landscape Supplies	Johnston	19	The Garden Hut	Wake	22
Landscapes by Veronica	Harnett	11	Big Bloomers Flower Farm	Lee	20	Twin Oaks Feed & Supply	Wake	23
Overhills High School	Harnett	12	Broadway Hardware	Lee	20	<b>Pick Your Own Fruits / Vegetables</b>		
Royal Landscaping Services	Harnett	13	Dale's Garden Center	Lee	20	Dr. Young's Pond Berry Farm	Harnett	9
C & J Nursery	Johnston	18	Gross Farms Nursery	Lee	20	Johnson Farms	Harnett	10
Elevation Plant Nursery	Johnston	18	Jackson Bros. Produce	Lee	20	Gross Farms	Lee	20
The Garden Hut	Wake	22	Tramway Stone & Mulch	Lee	20	Spivey Produce	Lee	20
<b>Landscape Installation</b>			Baskets & Flowers	Sampson	21	Ogburn Berries and Produce	Wake	23
Green South Landscaping	Harnett	9	Cavanaugh Agri Sales	Sampson	21	<b>Pots &amp; Potting Soil</b>		
Landscapes by Veronica	Harnett	11	The Country Market Store	Wake	22	Ace Hardware	Harnett	7
M & W Landscaping	Harnett	11	The Garden Hut	Wake	22	Champion Milling Co.	Harnett	8
Miller's Landscaping Supplies, LLC	Harnett	12	J & J Mulch Company	Wake	22	Jernigan's Nursery	Harnett	10
Royal Landscaping Services	Harnett	13	MOSS' Const. Co	Wake	22	Tarheel Nursery	Harnett	15
S & S Contract Landscaping	Harnett	13	Soil Toppers, Inc.	Wake	23	Womble, J. E. & Sons	Harnett	16
Sandhills Lawn Service	Harnett	13	Twin Oaks Feed & Supply	Wake	23	Four Seasons Florist	Johnston	18
Snell Tree Experts, LLC	Harnett	14	<b>Perennial Plants</b>			Medlin & Dorman	Johnston	18
Tri County Scapes	Harnett	15	Angier Florist	Harnett	7	Big Bloomers Flower Farm	Lee	20
Elevation Plant Nursery	Johnston	17	Broadwell's Nursery	Harnett	8	Broadway Hardware	Lee	20
The Country Market Store	Wake	22	Dragonfly Florist, LLC	Harnett	9	Dale's Garden Center	Lee	20
The Garden Hut	Wake	22	Jabez Floristry	Harnett	10	Jackson Bros. Produce	Lee	20
<b>Landscape Maintenance</b>			Jernigan's Nursery	Harnett	10	Cavanaugh Agri Sales	Sampson	21
Landscapes by Veronica	Harnett	11	Landscapes by Veronica	Harnett	11	The Garden Hut	Wake	22
M & W Landscaping	Harnett	11	Miller's Landscaping Supplies, LLC	Harnett	12	<b>Power Tool &amp; Equipment Repair</b>		
Miller's Landscaping Supplies, LLC	Harnett	12	Old Stage Rd Nursery	Harnett	12	Lanky's Power Equipment	Harnett	11
Royal Landscaping Services	Harnett	13	Saturday Azalea	Harnett	13	Lillington Small Engine	Harnett	11
S & S Contract Landscaping	Harnett	13	Tarheel Nursery	Harnett	15	Quality Equipment	Harnett	12
Sandhills Comm. Lawn Service	Harnett	13	Tart's Produce	Harnett	15	Womble, J. E. & Sons	Harnett	16
C & J Nursery	Johnston	18	Triton High School	Harnett	15			
ChemPro	Johnston	18	Vickie's Greenhouse/Garden Ctr	Harnett	15			
			Western Harnett HS	Harnett	16			



# Index of Products and Services

<b>Power Tool &amp; Equipment Sales</b>			<b>Sod</b>			<b>Trees &amp; Shrubs</b>		
Ace Hardware	Harnett	7	DMG Turf, Inc.	Harnett	9	Tart's Produce	Harnett	15
Lanky's Power Equipment	Harnett	11	Landscapes by Veronica	Harnett	11	Triton High School	Harnett	15
Quality Equipment	Harnett	12	S & S Contract Landscaping	Harnett	13	Vickie's Greenhouse/Garden Ctr	Harnett	15
Womble, J. E. & Sons	Harnett	16	Tramway Stone & Mulch	Lee	21	C & J Nursery	Johnston	18
Medlin & Dorman	Johnston	19	Tri State Turf	Sampson	22	Elevation Plant Nursery	Johnston	18
<b>Roadside Stands</b>			The Country Market Store	Wake	23	Hinnant's Nursery & Landscape	Johnston	19
Johnson Farms	Harnett	10	Soil Toppers, Inc.	Wake	23	McLamb Nursery	Johnston	19
Langdon's Berry Farm	Harnett	11	<b>Soil Amendments</b>			Woodard Pecan Nursery	Johnston	20
Morris' Apple Orchard	Harnett	12	Ace Hardware	Harnett	7	Big Bloomers Flower Farm	Lee	20
Naylor's Produce	Harnett	12	Barefoot's Hardware	Harnett	7	Broadway Hardware	Lee	20
Stephen Salmon's Orchard	Harnett	14	Landscapes by Veronica	Harnett	11	Baskets & Flowers	Sampson	21
Patterson Farms/Greenhouses	Lee	20	Lockamy's Grading	Harnett	11	Campbell Road Nursery	Wake	21
Spivey's Produce	Lee	20	Watkins Farm Service	Harnett	16	The Garden Hut	Wake	22
<b>Seasonal Plants</b>			Womble, J. E. & Sons	Harnett	16	Olive's Tree Farm	Wake	23
Ace Hardware	Harnett	7	Triangle Landscape Supplies	Johnston	19	<b>Vegetable &amp; Flower Seeds</b>		
Angier Florist	Harnett	7	Gross Farms Nursery	Lee	20	Ace Hardware	Harnett	7
Dragonfly Florist, LLC	Harnett	9	Jackson Bros. Produce	Lee	20	Womble, J. E. & Sons	Harnett	16
Harnett Central High School	Harnett	10	Tramway Stone & Mulch	Lee	20	Medlin & Dorman	Johnston	19
Jabez Floristry	Harnett	10	Soil Toppers, Inc.	Wake	23	Broadway Hardware	Lee	20
Jernigan's Nursery	Harnett	10	<b>Storage Sheds</b>			Dale's Garden Center	Lee	20
Landscapes by Veronica	Harnett	11	Jackson Bros. Produce	Lee	20	Jackson Bros. Produce	Lee	20
Miller's Landscaping Supplies, LLC	Harnett	12	Tramway Stone & Mulch	Lee	20	Thomas Farm Service	Lee	20
Old Stage Road Nursery	Harnett	12	<b>Topsoil &amp; Compost</b>			Baskets & Flowers	Sampson	21
Overhills High School	Harnett	12	Ace Hardware	Harnett	7	Cavanaugh Agri Sales	Sampson	21
Stewart's Greenhouse	Harnett	14	Bryant Grading and Landfill	Harnett	8	The Country Market Store	Wake	23
Tarheel Nursery	Harnett	15	Lockamy's Grading	Harnett	11	<b>Vegetable Plants</b>		
Tart's Produce	Harnett	15	Miller's Landscaping Supplies, LLC	Harnett	12	Champion Milling Co.	Harnett	8
Triton High School	Harnett	15	RLT Construction	Harnett	13	Dragonfly Florist, LLC	Harnett	9
Vickie's Greenhouse/Garden Ctr	Harnett	15	Tri County Scapes	Harnett	15	Johnson Farms	Harnett	10
Western Harnett HS	Harnett	16	Womble, J. E. & Sons	Harnett	16	Miller's Landscaping Supplies, LLC	Harnett	12
Womble, J. E. & Sons	Harnett	16	McGill Environmental	Chatham	16	Overhills High School	Harnett	12
Century Gardeners of Linden	Cumberland	17	Triangle Landscape Supplies	Johnston	19	Stewart's Greenhouse	Harnett	14
Medlin & Dorman	Johnston	19	Dale's Garden Center	Lee	20	Tarheel Nursery	Harnett	15
Big Bloomers Flower Farm	Lee	20	Gross Farms Nursery	Lee	20	Tart's Produce	Harnett	15
Broadway Hardware	Lee	20	Jackson Bros. Produce	Lee	20	Vickie's Greenhouse/Garden Ctr	Harnett	15
Dale's Garden Center	Lee	20	Tramway Stone & Mulch	Lee	20	Womble, J. E. & Sons	Harnett	16
Gross Farms	Lee	20	Baskets & Flowers	Sampson	22	Medlin & Dorman	Johnston	19
Jackson Bros. Produce	Lee	20	The Country Market Store	Wake	23	Big Bloomers Flower Farm	Lee	20
Tramway Stone & Mulch	Lee	20	MOSS' Const. Co.	Wake	23	Broadway Hardware	Lee	20
Baskets & Flowers	Sampson	22	Soil Toppers, Inc.	Wake	23	Dale's Garden Center	Lee	20
Cavanaugh Agri Sales	Sampson	22	<b>Tree Removal &amp; Pruning</b>			Jackson Bros. Produce	Lee	20
The Country Market Store	Wake	23	BK Backhoe Service, Inc.	Harnett	8	Baskets & Flowers	Sampson	21
The Garden Hut	Wake	23	Lockamy's Grading	Harnett	11	Cavanaugh Agri Sales	Sampson	21
Porter Farms & Nursery	Wake	23	Miller's Landscaping Supplies, LLC	Harnett	12	The Country Market Store	Wake	23
Twin Oaks Feed & Supply	Wake	23	M & W Landscaping	Harnett	11	The Garden Hut	Wake	23
<b>Site Work, Grading, Hauling, Backhoe</b>			Snell Tree Experts, LLC	Harnett	14	Twin Oaks Feed & Supply	Wake	23
Lockamy's Grading	Harnett	11	Big Branch Tree Service	Lee	20	<b>Vegetables &amp; Produce</b>		
Miller's Landscaping Supplies, LLC	Harnett	12	MOSS' Const. Co.	Wake	23	DMG Farms	Harnett	9
RLT Construction	Harnett	13	<b>Trees &amp; Shrubs</b>			Johnson Farms	Harnett	10
S & S Contract Landscaping	Harnett	13	Broadwell's Nursery	Harnett	8	Naylor's Produce	Harnett	12
Broadway Hardware	Lee	20	Harnett Central High School	Harnett	10	Tart's Produce	Harnett	15
The Country Market Store	Wake	23	Jernigan's Nursery	Harnett	10	Western Harnett HS	Harnett	16
MOSS' Const. Co.	Wake	23	Landscapes by Veronica	Harnett	11	Gross Farms Nursery	Lee	20
Soil Toppers, Inc.	Wake	23	Miller's Landscaping Supplies, LLC	Harnett	12	Jackson Bros. Produce	Lee	20
			Old Stage Rd Nursery	Harnett	12	Patterson Farms/Greenhouses	Lee	20
			Overhills High School	Harnett	12	Spivey Produce	Lee	20
			Rabbit Ridge Nursery	Harnett	13	Campbell Road Nursery	Wake	21
			Saturday Azalea	Harnett	13	The Country Market Store	Wake	23
						Ogburn Berries and Produce	Wake	23
						Porter Farms & Nursery	Wake	23

## **Harnett County**

<b>Supplier</b>	<b>Hours</b>	<b>Products &amp; Services</b>
<b>Ace Hardware</b> (Eric Jensen) 61 North Raleigh St Angier 27501 919-275-9779	Year Round Mon—Fri 8:00am—7:00pm Saturday 8:00am—6:00pm Sunday 10:00am—6:00pm <u><b>"See Our Ad on Page 24"</b></u>	<ul style="list-style-type: none"> <li>• Decorative Rock</li> <li>• Drainage Supplies</li> <li>• Fertilizers and Pesticides</li> <li>• Fire Ant Control</li> <li>• Firewood</li> <li>• Hand and Power Tools</li> <li>• Landscape Ornamentation</li> <li>• Mulch, Soil Amendments and Topsoil</li> <li>• Pots and Potting Soils</li> <li>• Annual and Seasonal Plants</li> <li>• Vegetable and Flower Seeds</li> </ul>
<b>Adams an Oldcastle Company</b> (Penny Freeman, Office Manager) 192 Gateway Drive Dunn 910-892-3267 910-897-4301 (fax) Email: penny.freeman@oldcastle.com <a href="http://www.adamsproducts.com">www.adamsproducts.com</a>	Mon - Fri 7:30 - 5:00 Sat - Sun Closed	<ul style="list-style-type: none"> <li>• Landscaping &amp; Retaining Walls</li> <li>• Concrete &amp; Clay Pavers</li> <li>• Belgard Hardscapes</li> <li>• Concrete &amp; Clay Brick</li> <li>• Concrete &amp; Decorative Block</li> <li>• Mortar, Sand &amp; Masonry Accessories</li> <li>• Dufferin Stone &amp; Manufactured Stone</li> <li>• Natural Thin Stone Veneers</li> <li>• SureTouch System</li> <li>• PC Glass block</li> </ul>
<b>Angier Florist</b> (Anna Wilkins) 57 East Depot St Angier 27501 919-639-4334 Email: angierflorist@yahoo.com <a href="http://www.angierflorist.com">www.angierflorist.com</a>	Mon - Fri 9:00 - 5:00 Saturday 9:00 - 2:00 <u><b>"See Our Ad on Page 25"</b></u>	<ul style="list-style-type: none"> <li>• Weddings</li> <li>• Funerals</li> <li>• Cut arrangements</li> <li>• Potted plants</li> <li>• Silks</li> <li>• Balloons</li> <li>• Wreaths</li> </ul>
<b>Barefoot's Hardware &amp; Supply Co.</b> (Benny Barefoot) 12072 NC 210 South Spring Lake 910-497-0435	Mon - Fri 8:00 - 5:30 Saturday 8:00 - 2:00	<ul style="list-style-type: none"> <li>• Lawn &amp; Garden Supplies</li> <li>• Fertilizers &amp; Soil Amendments</li> <li>• Pesticides</li> <li>• Hand Tools</li> </ul>
<b>Betty's Pecan Cracking</b> (Betty Miller) 17 Rudolph Rd. Dunn 919-894-4440	Seasonal Call for Hours	<ul style="list-style-type: none"> <li>• Pecan Cracking</li> <li>• Pecans for Sale</li> </ul>
<b>Beyond Petals Florist &amp; Gifts</b> 915 South Main St. P. O. Box 42 Lillington, NC 27546 910-814-0660 Email: beyondpetals14@gmail.com	Mon - Fri 9:00 - 5:00 Saturday 10:00 - 2:00	<ul style="list-style-type: none"> <li>• Flowers</li> <li>• Plants</li> <li>• Gifts</li> </ul>

## Harnett County

Supplier	Hours	Products & Services
<b>BK Backhoe Service Inc.</b> (Bill King) 1663 Loop Road Bunnlevel 910-893-5411 910-514-0590 (Bill King mobile) 910-322-6700 (Brian King mobile)	Year Round  Call for Hours	<ul style="list-style-type: none"> <li>• Stump removal</li> <li>• Ditching</li> <li>• Grading</li> <li>• Lot Clearing</li> <li>• Gravel Driveways</li> <li>• Horse Hay Available</li> </ul>
<b>Broadwell's Nursery</b> (Coy Broadwell) 7110 Old Stage Road North Angier 919-639-2952	Year Round  Mon - Fri 7:00 - 6:00  Sat 7:00 - 5:00  Sunday - Closed	<ul style="list-style-type: none"> <li>• Shrubs</li> <li>• Assorted trees</li> <li>• Some perennials (Wholesale prices)</li> </ul>
<b>Bryant Grading and Landfill</b> 305 Spence Mill Road Fuquay 919-552-3420 Email: bryantgrading@yahoo.com	Year Round  Mon - Fri 7:30 - 5:30  Saturday 8:00 - 1:00	<ul style="list-style-type: none"> <li>• Compost</li> <li>• Mulch</li> <li>• Topsoil</li> <li>• Firewood</li> <li>• Mortar sand</li> <li>• Stone</li> <li>• Fill dirt</li> <li>• Delivery available</li> </ul>
<b>Champion Milling Co., Inc.</b> (Gale & Gary Harris) 100 West Edgerton Street Dunn 910-892-3067	Mon - Fri 8:00 - 5:30  Saturday 8:00 - 12:30  <u><b>"See Our Ad on Page 38"</b></u>	<ul style="list-style-type: none"> <li>• Hay, Seed, Fertilizers &amp; Pesticides</li> <li>• Medicines for equine, dogs, chickens, &amp; fish</li> <li>• Propane Gas &amp; Chemicals</li> <li>• Baby chickens, ducks, &amp; rabbits</li> <li>• Vegetable Plants</li> <li>• Annuals &amp; Hanging Baskets</li> <li>• Hand Tools &amp; Potting Soil</li> </ul>
<b>David Potter Fence Company</b> (David Potter) 742 Silas Moore Rd Coats 919-639-7229 (office) 919-422-4145 (cell) Email: potterfence@aol.com	Year Round  Mon - Fri 8:00 - 6:00	<ul style="list-style-type: none"> <li>• Install all Types of Fencing</li> <li>• Wood Fencing</li> <li>• Chain-link Fencing</li> <li>• Commercial Chain-link Fencing</li> <li>• Aluminum Fencing</li> <li>• PVC Fencing</li> </ul>
<b>Denny Lee's Mulch</b> 10 Blackberry Rd. Erwin 910-893-5797	Year Round  Call for Hours	<ul style="list-style-type: none"> <li>• Bald Cypress Mulch (truckloads available)</li> <li>• Brick Chips</li> <li>• Brick Fines (for ball fields)</li> </ul>



## **Harnett County**

<b>Supplier</b>	<b>Hours</b>	<b>Products &amp; Services</b>
<b>DMG Farms, Inc.</b> (David Gardner) 997 Matthews Mill Pond Rd. Angier 919-639-4027 Email: <a href="mailto:cgardner@dmgturf.com">cgardner@dmgturf.com</a>	Call ahead	<ul style="list-style-type: none"> <li>• Sweet Potatoes</li> </ul>
<b>DMG Turf, Inc.</b> (Clay E. Gardner) 997 Matthews Mill Pond Rd. Angier 919-639-4027 919-639-6312 (fax) Email: <a href="mailto:sales@dmgturf.com">sales@dmgturf.com</a> <a href="http://www.dmgturf.com">www.dmgturf.com</a>	Mon - Fri 8:00 - 5:00  Saturday 8:00 - 10:30 pick up only on previously placed orders.  <b><u>"See Our Ad on Page 26"</u></b>	<ul style="list-style-type: none"> <li>• Confederate Tall Fescue Blend</li> <li>• Tifway 419 Bermuda</li> <li>• TifGrand Bermuda (Shade Tolerant)</li> <li>• Common Centipede</li> <li>• Compadre Zoysia</li> <li>• Delivery Available</li> </ul>
<b>Dr. Young's Pond Berry Farm</b> (Stan & Betty Trustman) 10865 Hwy 210 North Angier 919-639-6360 Email: <a href="mailto:bettytrustman@gmail.com">bettytrustman@gmail.com</a> <a href="http://www.dryoungspondberryfarm.com">www.dryoungspondberryfarm.com</a> Facebook: Dr Young's Pond Berry Farm	Hours vary with berry production  Open June and July Tues, Thurs and Sat 7:00 - 1:00  May add afternoon hours during peak season	<ul style="list-style-type: none"> <li>• Pick your own</li> <li>• Blackberries</li> <li>• Blueberries</li> <li>• Raspberries</li> </ul>
<b>Dragonfly Florist, LLC</b> (Terry Johnson) 322 South McKinley Street Coats 910-897-6132 910-237-1041 (After hours) Email: <a href="mailto:dragonflyfloristnc@gmail.com">dragonflyfloristnc@gmail.com</a> <a href="http://www.dragonflyfloristnc.com">www.dragonflyfloristnc.com</a>	Mon - Fri 8:00 - 5:00  Saturday 8:00 - 12:00	<ul style="list-style-type: none"> <li>• Florist</li> <li>• Vegetable &amp; Bedding Plants</li> <li>• Hanging Baskets</li> <li>• Mums</li> <li>• Poinsettias</li> <li>• House Plants</li> </ul>
<b>Emma's Garden (Formerly Ann's Flowers)</b> (Frances Phillips) 300 West Front St. Lillington 27546 910-893-9192 Email: <a href="mailto:emmaphillips@aol.com">emmaphillips@aol.com</a>	Mon - Fri 9—5  Saturday 9—12	<ul style="list-style-type: none"> <li>• Weddings</li> <li>• Funerals</li> <li>• Cut Arrangements</li> <li>• Potted Plants</li> <li>• Silks</li> <li>• Balloons</li> <li>• Wreaths</li> </ul>
<b>Green South Landscaping, LLC</b> (Mark Gardner) 1318 Tysinger Rd. Lillington 910-814-2495 Email: <a href="mailto:greensouthland@embarqmail.com">greensouthland@embarqmail.com</a> <a href="http://www.greensouthlandscaping.com">www.greensouthlandscaping.com</a>	Mon - Fri 9:00 - 5:00	<ul style="list-style-type: none"> <li>• Hardscapes</li> <li>• Landscapes</li> <li>• Irrigation</li> <li>• Residential &amp; Commercial design &amp; installation</li> <li>• Landscape Management &amp; lawn care</li> <li>• Light grading &amp; drainage</li> </ul>

## **Harnett County**

<b>Supplier</b>	<b>Hours</b>	<b>Products &amp; Services</b>
<b>Harnett Central High School</b> (Fred Clarida) Email: fclarida@harnett.k12.nc.us 2911 Harnett Central Rd. Angier 919-639-6161	Seasonal  <b>Proceeds Benefit School</b>	<ul style="list-style-type: none"> <li>• Nursery shrubs</li> <li>• Trees</li> <li>• Poinsettias</li> <li>• Bedding Plants</li> </ul>
<b>Jabez Floristry</b> Oscar Gomez 47 S. Broad St. Angier 919-614-2106 919-639-0835 <a href="http://www.jabezfloristry.com">www.jabezfloristry.com</a>	Mon - Fri 9:00 - 5:30  Saturday 9:00 - 3:00  Sunday Closed  <u><b>"See Our Ad on Page 27"</b></u>	<ul style="list-style-type: none"> <li>• Flowers For All Occasions</li> <li>• Funerals</li> <li>• Cut arrangements</li> <li>• Potted plants</li> <li>• Silks</li> <li>• Balloons</li> <li>• Wreaths</li> </ul>
<b>Jarco Supply</b> Ryan Sandlin, Manager 30 Jarco Drive 919-586-0123 919-586-0129 (Fax) Email: ryan@jarcosupply.com <a href="http://www.jarcosupply.com">www.jarcosupply.com</a>	Mon - Fri 7:00 - 5:00  <u><b>"See Our Ad on Page 28 "</b></u>	<ul style="list-style-type: none"> <li>• Grading &amp; Sitework supplies</li> <li>• Pipe &amp; Drainage supplies</li> <li>• Contractor Seed Mix</li> <li>• Erosion Control Seed Mix</li> <li>• K-31 Fescue</li> <li>• Rye Grass</li> <li>• Custom Blended Mixes</li> <li>• Fertilizer &amp; Lime</li> </ul>
<b>Jernigan's Nursery</b> (Donnie Jernigan) 1801 W. Cumberland St. Dunn 910-892-4929 Email: info@jernigansnursery.com <a href="http://www.jernigansnursery.com">www.jernigansnursery.com</a>	Mon - Sat 9:00 - 6:00  Sunday Closed	<ul style="list-style-type: none"> <li>• Annuals, Perennials &amp; Herbs</li> <li>• Trees &amp; Shrubs</li> <li>• Seasonal Plants &amp; Hanging Baskets</li> <li>• Garden supplies &amp; Fertilizers</li> <li>• Pots &amp; Hand Tools</li> <li>• Christmas Trees</li> <li>• Statuary &amp; Gift Décor</li> </ul>
<b>Johnson Farms</b> (Brian Johnson) 11828 Hwy 210 at Old Stage Road Angier 919-427-2976 Email: johnsonfarms2@yahoo.com	April to December 9:00 - 7:00  Days Vary	<ul style="list-style-type: none"> <li>• Strawberries</li> <li>• Farm Fresh Produce</li> <li>• Pumpkins</li> <li>• Christmas Trees</li> <li>• Mums</li> <li>• Homemade Ice Cream</li> </ul>

## **Harnett County**

<b>Supplier</b>	<b>Hours</b>	<b>Products &amp; Services</b>
<b>Landscapes by Veronica, LLC</b> (Veronica Hoffert) 246 Lattimore Rd Cameron 919-909-3660 919-909-3665 <a href="http://www.landscapesbyveronica.com">www.landscapesbyveronica.com</a>	Year Round  Mon - Fri 8:00 - 5:00  Saturday 8:00 - 12:00	<ul style="list-style-type: none"> <li>• Full Service Landscape Company</li> <li>• Design, Installation &amp; Maintenance</li> <li>• Mulching &amp; Pine Straw</li> <li>• Sodding &amp; Seeding</li> <li>• Lawn Fertilization</li> <li>• Planting Annuals &amp; Perennials</li> </ul>
<b>Langdon's Berry Farm</b> Highway 421 Dunn 919-369-0982 910-897-5609 Email: salgolf@embarqmail.com	Mid-April to Mid-August  Call for Hours	<ul style="list-style-type: none"> <li>• Roadside Stand</li> <li>• Strawberries, watermelons, cantaloupes</li> <li>• Tomatoes</li> <li>• Corn</li> <li>• Shelled peas</li> <li>• Butterbeans</li> <li>• Other Vegetables</li> </ul>
<b>Lanky's Outdoor Power Equipment &amp; Bicycle Shop</b> 356 Pope Rd. Dunn 910-892-9257 910-892-1546 Email: <a href="mailto:lankysbikeshop@embarqmail.com">lankysbikeshop@embarqmail.com</a> <a href="http://www.lankys.com">www.lankys.com</a>	Mon - Fri 8:00 - 5:00  Saturday 8:00 - 12:00  Sunday Closed	<ul style="list-style-type: none"> <li>• Ariens</li> <li>• Gravely</li> <li>• Cadet</li> <li>• Stihl</li> <li>• Power Equipment factory authorized repair center</li> <li>• Bicycle sales &amp; service</li> </ul>
<b>Lillington Small Engine Repair</b> 1385 North Main Street Lillington 910-814-8333 Email: <a href="mailto:lillingtonsmallengine@yahoo.com">lillingtonsmallengine@yahoo.com</a>	Mon - Fri 8:00 – 5:00  Saturday 8:00 - 12:00	<ul style="list-style-type: none"> <li>• Service and Repair all Mowers</li> <li>• Power Equipment factory authorized repair center</li> <li>• Bulk Mulch</li> <li>• Pine Straw</li> </ul>
<b>Lockamy's Grading Inc.</b> 3288 Old Buies Creek Rd. Angier 919-639-4672 919-524-3354 (mobile)	Year round  Call for Hours	<ul style="list-style-type: none"> <li>• Top Soil, Gravel, Soil delivered</li> <li>• Lot Clearing, debris &amp; tree removal</li> <li>• Grading</li> <li>• Landscape</li> </ul>
<b>M &amp; W Landscaping</b> (Randall McNeill & Kevin Womack) 185 C.P. Stewart Rd. Lillington 910-890-3928 OR 910-890-5972 Email: <a href="mailto:uncmonkey@embarqmail.com">uncmonkey@embarqmail.com</a>	Year Round  Mon - Fri 7:30-5:30	<ul style="list-style-type: none"> <li>• Mowing</li> <li>• Weed Control</li> <li>• Seeding &amp; Sodding</li> <li>• Irrigation</li> <li>• Tree &amp; Shrub Pruning</li> <li>• Fire Ant Treatments</li> <li>• Power Washing</li> </ul>

## **Harnett County**

<b>Supplier</b>	<b>Hours</b>	<b>Products &amp; Services</b>
<b>Miller's Landscaping Supplies, LLC</b> (Buddy Miller) 401 East Jackson Blvd Erwin 910-892-4551 910-892-6922 (fax) Email: mlandscaping4551@aol.com <a href="http://www.millerslawn-landscaping.com">www.millerslawn-landscaping.com</a>	Spring - Fall Mon - Fri 8:00 – 5:00 Saturday 8:00 - 3:00  Winter Mon—Fri 8:00—5:00	<ul style="list-style-type: none"> <li>• Complete Lawn &amp; Landscape Maintenance</li> <li>• Complete Landscape Installation</li> <li>• Landscaping Supplies</li> <li>• Flowers, Trees, Hanging Baskets</li> <li>• Forestry Services</li> <li>• For-Hire Hauling</li> <li>• Mulch/ Pine Straw sales &amp; installation</li> <li>• Dump Truck &amp; Backhoe services</li> <li>• Snow and ice removal</li> <li>• Right-of-Way and Lot Clearing &amp; Brush Removal</li> <li>• Tree pruning and removal</li> </ul>
<b>Morris' Apple Orchard</b> 129 Bumpass Ck. Access Dunn 910-237-8657	Call for Hours	<ul style="list-style-type: none"> <li>• Roadside Stand</li> </ul>
<b>Naylor Family Farm and Produce</b> 6016 North Highway 401 Fuquay (South of Kipling) 910-249-2258 Email: pigsandproduce@gmail.com	Call for Hours  <u><b>"See Our Ad on Page 29"</b></u>	<ul style="list-style-type: none"> <li>• Roadside Stand</li> <li>• Seasonal Fruits and Vegetables</li> <li>• Sept-Nov Corn Maze</li> </ul>
<b>Old Stage Road Nursery</b> (Rob Broadwell) 7181 Old Stage Rd North Angier 919-631-5729 Email: osrn@charter.net	Year Round Mon.— Fri. 8:00 - 6:00 Saturday 8:00 - 5:00	<ul style="list-style-type: none"> <li>• Annual Plants</li> <li>• Perennial Plants</li> <li>• Seasonal Plants</li> <li>• Trees and Shrubs</li> <li>• Landscape Ornamentation</li> <li>• Wholesale Pricing</li> </ul>
<b>Overhills High School</b> (William Battle) 2495 Ray Road Spring Lake 910-436-1436 <a href="mailto:wbattle@harnett.k12.nc.us">wbattle@harnett.k12.nc.us</a>	Mon - Fri 8:00 - 3:00 or by appointment  <b><i>Proceeds benefit school</i></b>	<ul style="list-style-type: none"> <li>• Nursery &amp; Landscape Plants year round</li> <li>• Annuals &amp; Perennials April 1 to May 30</li> <li>• Herbs, Fall Mums &amp; Poinsettias</li> <li>• Call for Winter Annuals</li> <li>• Floral Designs by students</li> <li>• Landscape Designs by students</li> </ul>
<b>Quality Equipment, LLC</b> (Steve Dove, General Manager) 1500 S. Clinton Ave. Hwy. 301 South Dunn 910-892-6171 FAX 910-892-4689 Email: sdove@qualityequip.com <a href="http://www.qualityequip.com">www.qualityequip.com</a>	Mon - Fri 7:30 - 5:30 Saturday 8:00 - 12:00 Sunday Closed Closed Sat. in Jan & Feb	<ul style="list-style-type: none"> <li>• Blowers</li> <li>• Chain saws</li> <li>• Stick edger</li> <li>• Hedge trimmer</li> <li>• Pumps</li> <li>• Generators</li> <li>• Line trimmers</li> <li>• Lawn mowers</li> <li>• Parts &amp; Service</li> </ul>

## Harnett County

<b>Supplier</b>	<b>Hours</b>	<b>Products &amp; Services</b>
<b>Rabbit Ridge Nursery</b> (Fred Robinson) 125 W. Lisa Street Coats 910-897-2639 Email: fred@rabbitridgenursery.com <a href="http://www.rabbitridgenursery.com">www.rabbitridgenursery.com</a>	Open Year Round  Mon - Fri 8:00 - 4:00 Saturday 8:00 - 12:00	<ul style="list-style-type: none"> <li>• Fruit &amp; Berry Trees &amp; Shrubs</li> <li>• Blackberries, Blueberries, Raspberries</li> <li>• Apples, Cherries, Plums, Quince</li> <li>• Japanese Persimmons, Peaches</li> <li>• Pears, Pecans, Pomegranates.</li> <li>• Tropicals, Lemon, Lime, &amp; Orange Trees</li> <li>• Almond, Olive and English Walnut</li> <li>• Ground Covers</li> </ul>
<b>RLT &amp; Associates Inc.</b> (Ricky Temple) 111 Tasha Lane Fuquay-Varina 919-552-4489 919-557-7536 Email: rlt@rltandassociates.net <a href="http://www.rltandassociates.net">www.rltandassociates.net</a>	Year Round  Mon. - Fri. 8:00 - 5:00  Emergency utility repairs 24/7  <b><u>"See Our Ad on Page 30"</u></b>	<ul style="list-style-type: none"> <li>• Driveway Repair</li> <li>• Stone</li> <li>• Sand</li> <li>• Gravel</li> <li>• Topsoil</li> <li>• Fill dirt</li> <li>• Sinkhole repair</li> <li>• Storm drain cleaning and installation</li> <li>• Water/sewer line repairs/installation</li> <li>• Hydro-jetting / Video Inspection</li> </ul>
<b>Royal Landscaping Services</b> (Robert & Melissa Swartzlander) Lillington 919-625-5152 919-800-8978 Email: royallandscapingservices@yahoo.com <a href="http://www.royallandscapingservices.net">www.royallandscapingservices.net</a>	Year Round  Call for Hours	<ul style="list-style-type: none"> <li>• Custom Curbing</li> <li>• Landscape Design &amp; Maintenance</li> <li>• Hardscapes</li> <li>• Irrigation</li> <li>• Erosion Control</li> </ul>
<b>S and S Contracting and Landscaping, Inc.</b> (Stephen Butts) 6349 River Road Fuquay Varina 919-669-2996 Email: stephen@sandscontr.com <a href="http://www.sandscontr.com">www.sandscontr.com</a>	Year Round  Flexible Hours	<ul style="list-style-type: none"> <li>• Flower Nursery</li> <li>• Full Service Lawn Maintenance</li> <li>• Seeding, Sodding, Planting &amp; Drainage</li> <li>• Aeration &amp; Fertilization</li> <li>• Pine Straw &amp; Mulching</li> <li>• Pavers, Stonework, &amp; Retaining Walls</li> <li>• New &amp; Old Renovations</li> <li>• Construction for new homes &amp; additions</li> </ul>
<b>Sandhills Commercial Lawn Service, Inc.</b> (Robert) 748 South River Rd. Lillington 910-893-8891 910-308-8891	Year Round  Call for Hours	<ul style="list-style-type: none"> <li>• Lawn &amp; Landscaping Maintenance</li> <li>• Installation of Irrigation Systems</li> <li>• Parking Lot Maintenance</li> <li>• Install Landscape and Hardscape</li> <li>• Commercial &amp; Residential</li> </ul>
<b>Saturday Azalea</b> (Paul Weedon) 1160 Benhaven School Road Olivia 919-499-4592 910-890-4628 (mobile) Email: paul.weedon@yahoo.com	Seasonal  Sat & Sun 8:00 - 5:00  Pull in and honk or call mobile in spring Always Available	* <i>Not just Azaleas</i> <ul style="list-style-type: none"> <li>• Trees &amp; Shrubs (all kinds)</li> <li>• Roses</li> <li>• Lilies</li> <li>• Azaleas</li> <li>• Camellias</li> </ul>

## **Harnett County**

<b>Supplier</b>	<b>Hours</b>	<b>Products &amp; Services</b>
<b>Smith's Pecan Cracking</b> (Randy and Cindy Smith) 8637 Highway 55 Angier 919-639-0762 Email: pecansmith1@yahoo.com	Mon, Tue, Thur, Fri 5:00 - 8:00  Saturday 8:30 - 4:30	<ul style="list-style-type: none"> <li>• Pecan Cracking</li> <li>• Pecans for Sale</li> </ul>
<b>Snell Tree Experts, LLC</b> ISA Certified Arborist (#SO-2907A) 6524 US Hwy 401 N Fuquay Varina (Kipling) 919-557-3507 (Office) 919-210-8491 (Mobile) Email: Office@SnellTreeExperts.com <a href="http://www.SnellTreeExperts.com">www.SnellTreeExperts.com</a>	Year Round  Call for Hours  Check Website for Additional Information	<ul style="list-style-type: none"> <li>• Certified Tree Care Safety Prof. #01457</li> <li>• Consultations</li> <li>• Tree Valuations, Pruning, Planting, or Removal, Stump Grinding</li> <li>• Risk Hazard Assessments</li> <li>• Mulch Delivery Available</li> <li>• Cable Bracing and Ziplines</li> <li>• Classes on Chainsaw &amp; Chipper Safety</li> <li>• Classes on Tree Pruning</li> <li>• Firewood Available</li> </ul>
<b>Stephen Salmon's Orchard</b> 1661 Peach Farm Road Lillington 910-818-4993	Call for Hours	<ul style="list-style-type: none"> <li>• Roadside Stand</li> <li>• Peaches, Watermelon</li> <li>• Cantaloupe</li> </ul>
<b>Steve's Irrigation</b> 3579 US 421 North Lillington  (910)893-9673  <a href="http://www.stevetheirrigationguy.com">www.stevetheirrigationguy.com</a> Email:irrigations.guy@yahoo.com NC License #1304	Mon - Fri 8:00 - 5:00 Saturday 8:00 - 5:00	<ul style="list-style-type: none"> <li>• New Irrigation Design/Installation</li> <li>• Quality Service &amp; Repair</li> <li>• Irrigation System upgrades/add on</li> <li>• Drip Line Irrigation</li> <li>• Spring Turn On-Fall Shut Down</li> <li>• Residential/Commercial Service</li> <li>• Grading</li> <li>• Sod Installation</li> <li>• Fountains</li> <li>• Pond Aerators</li> <li>• Free Estimates</li> </ul>
<b>Stewart's Greenhouse</b> (Wanda Stewart) 6078 Elliott Bridge Road Linden 28356 919-497-7637	Spring Mon - Fri 9:00 - 6:00 Saturday 9:00 - 3:00	<ul style="list-style-type: none"> <li>• Spring Bedding Plants</li> <li>• Vegetable plants</li> <li>• Geraniums, Gerbera Daisies</li> <li>• Herbs</li> <li>• Hanging Baskets</li> <li>• Fall - Pansy Plants</li> <li>• Fall - Flowering Cabbage &amp; Kale</li> </ul>



## **Harnett County**

<b>Supplier</b>	<b>Hours</b>	<b>Products &amp; Services</b>
<b>Tarheel Nursery</b> Larry Fish, Owner Dusty Wilson, Manager 7160 Old Stage Road N Angier 919-639-4598 (phone) 919-639-7596 (fax) Email: <a href="mailto:tarheelnursery@gmail.com">tarheelnursery@gmail.com</a> <a href="http://www.tarheelnursery.com">www.tarheelnursery.com</a>	* Mon - Fri 8:00 - 5:00 Saturday 8:00 - 5:00  * Seasonal Hours May Vary Check our website for current hours  Summer & Fall Saturday 8:00 am - 1:00pm  <u><b>"See Our Ad on Page 31"</b></u>	<ul style="list-style-type: none"> <li>• Garden Seed– Spring &amp; Fall</li> <li>• Annuals/ Bedding Plants/ Perennials</li> <li>• Hanging Baskets &amp; Ferns</li> <li>• Garden Mums &amp; Pansies</li> <li>• Decorative Cabbages, Kale &amp; Mustard Plants</li> <li>• Vegetables, Herbs &amp; Tomato Plants</li> <li>• Poinsettias</li> <li>• Bagged Soil &amp; Cow Manure</li> <li>• Fertilizers &amp; Pesticides</li> </ul>
<b>Tart's Produce</b> (Charles Tart) 100 North Powell Ave. Dunn 910-892-1324	Mon - Sat 8:00 - 8:00  Sunday 9:00 - 6:00	<ul style="list-style-type: none"> <li>• Produce</li> <li>• Bedding plants &amp; Hanging Baskets</li> <li>• Strawberries</li> <li>• Pumpkins &amp; Christmas Trees</li> <li>• Shelling service</li> <li>• Old-fashion Candy, Jellies, Jams, Honey, Ice Cream</li> <li>• Bakery: Bread, Cakes &amp; Pies</li> <li>• Purina Products</li> </ul>
<b>Tri County Scapes</b> 7360 Hwy 210 Angier Chris Bonfiglio / John Harte 919-639-0302 / 919-337-3470  Email: <a href="mailto:John@ncdumpster.com">John@ncdumpster.com</a> <a href="http://www.tricountyscapes.com">www.tricountyscapes.com</a>	<b><i>Open Year Round</i></b>  Mon - Fri 8:30am - 4:30pm  Saturday 8:00am - 1:00pm	<ul style="list-style-type: none"> <li>• Mulch</li> <li>• Sand</li> <li>• Topsoil</li> <li>• Compost</li> <li>• Sod</li> <li>• Gravel</li> <li>• Landscape Installation</li> </ul>
<b>Triton High School</b> 215 Maynard Lake Rd Erwin 910-897-8121 Gary Pierce Email: <a href="mailto:gpierce@harnett.k12.nc.us">gpierce@harnett.k12.nc.us</a>	April Mon - Fri 10:00 - 5:30  November Mon - Fri 10:00 - 5:30  <b><i>Proceeds benefit school</i></b>	<ul style="list-style-type: none"> <li>• Hanging Baskets</li> <li>• Vegetables</li> <li>• Heirloom Tomatoes</li> </ul>
<b>Vickie's Greenhouse &amp; Garden Ctr</b> (Tim & Vickie Peach) 132 Cedar Chase Lane Fuquay-Varina 919-557-4978 919-418-3562	Year Round  Extended Hours in Spring & Summer Mon—Fri 8 :00—5:00 Sat 8:00 —5:00 Sun 12:00—5:00	<ul style="list-style-type: none"> <li>• Annuals &amp; Perennial</li> <li>• Hanging Plants</li> <li>• Vegetables &amp; Herbs</li> <li>• Aquatic Plants</li> <li>• Trees &amp; Shrubs</li> <li>• Potted Plants</li> <li>• Azaleas</li> </ul>

## **Harnett County**

<b>Supplier</b>	<b>Hours</b>	<b>Products &amp; Services</b>
<b>Watkins Farm Service</b> (Timothy Watkins) 52 Camellia Rd Angier (919) 639-0686 (office) (919) 369-5890 (cell) Email: watkinsfarmservice@gmail.com	Spring - Fall Mon - Sat 7:00 am - 6:00 pm  Winter Mon - Fri 7:00 am - 5:00 pm  <u><b>"See Our Ad on page 32"</b></u>	<ul style="list-style-type: none"> <li>• Fertilizers</li> <li>• Fire Ant Control</li> <li>• Grass Seed</li> <li>• Soil Amendments</li> <li>• Pesticides</li> <li>• Chemicals/ Herbicides</li> <li>• Landscape Supplies</li> </ul>
<b>Western Harnett High School</b> (Anna Bruner) 10637 Hwy 27 West Lillington 919-499-5113 <a href="mailto:abrunner@harnett.k12.nc.us">abrunner@harnett.k12.nc.us</a>	April 1st - Mother's Day  Mon - Fri 8:00 - 4:30  <u><b>Proceeds benefit School</b></u>	<ul style="list-style-type: none"> <li>• Poinsettia Sale—December</li> <li>• Perennial &amp; Annual Plants from April 1st - Mother's Day</li> <li>• Nursery and Landscape Plants year round</li> </ul>
<b>J.E. Womble &amp; Sons, Inc.</b> 805 West Front Street Lillington 910-893-5753	Mon - Fri 7:00 - 6:00  Saturday 7:00 - 4:00  Sunday closed  <u><b>"See Our Ad on Page 33"</b></u>	<ul style="list-style-type: none"> <li>• Garden Seeds and Plants</li> <li>• Seasonal Annuals</li> <li>• Mulch &amp; Potting Soil</li> <li>• Tools &amp; Building Materials</li> <li>• Power Equipment sales and service</li> <li>• Fertilizers &amp; Pesticides</li> <li>• Fire Ant Control</li> <li>• Bedbug Control - Chemicals and Kits</li> </ul>

## **Chatham County**

<b>Supplier</b>	<b>Hours</b>	<b>Products &amp; Services</b>
<b>McGill Environmental Systems</b> (Gary Gittere) 634 Christian Chapel Church Rd New Hill 919-362-1161 Email: ggittere@mcgillcompost.com <a href="http://www.mcgillsoilbuilder.com">www.mcgillsoilbuilder.com</a>	Year Round  Mon - Fri 8:00 - 5:00  <u><b>"See Our Ad on Page 34"</b></u>	<ul style="list-style-type: none"> <li>• Compost (Bulk and Bag)</li> <li>• Landscape mix</li> <li>• Agriculture grade for farms</li> </ul>

## **Cumberland County**

<b>Supplier</b>	<b>Hours</b>	<b>Products &amp; Services</b>
<b>Adams an Oldcastle Company</b> (Nikki Davidson, Office Manager) 957 Country Club Rd Fayetteville (800) 682-7025 (office) (910) 488-4120 (office) (910) 822-7487 (fax) Email: Nikki.davidson@oldcastle.com <a href="http://www.adamsproducts.com">www.adamsproducts.com</a>	Mon - Fri 7:00 - 4:00  Sat - Sun Closed	<ul style="list-style-type: none"> <li>• Landscaping &amp; Retaining Walls</li> <li>• Concrete &amp; Clay Pavers</li> <li>• Belgard Hardscapes</li> <li>• Concrete &amp; Clay Brick</li> <li>• Concrete &amp; Decorative Block</li> <li>• Mortar, Sand &amp; Masonry Accessories</li> <li>• Dufferin Stone &amp; Manufactured Stone</li> <li>• Natural Thin Stone Veneers</li> <li>• SureTouch System</li> <li>• PC Glassblock</li> </ul>

## **Cumberland County**

<b>Supplier</b>	<b>Hours</b>	<b>Products &amp; Services</b>
<b>The Century Gardeners of Linden</b> Linden Community Building Crissy Neville 910-980-1644	Seasonal  Call for times	<ul style="list-style-type: none"> <li>• Poinsettia sales Nov - Dec</li> </ul>
<b>Little River Pecans</b> 3610 Linden Rd Linden 28356 (Thomas and Crissy Neville) Email: <a href="mailto:dixiechic3610@aol.com">dixiechic3610@aol.com</a>	October - January  Flexible Hours	<ul style="list-style-type: none"> <li>• High-quality Paper Shell Pecans</li> <li>• Sold by the pound</li> <li>• Pecan Cracking (Linden Garden Club)</li> </ul>

## **Johnston County**

<b>Supplier</b>	<b>Hours</b>	<b>Products &amp; Services</b>
<b>C &amp; J Nursery</b> (Richard, Camilo & Juliana Apolinar) 432 Clayton Rd Angier 919-894-4345 (office) 919-437-6349 (Richard cell)	Spring, Summer & Fall Mon-Fri 7:00 am - 5:00 pm  Winter Mon-Fri 7:30 am - 4:30 pm	<ul style="list-style-type: none"> <li>• Trees</li> <li>• Fruit Trees</li> <li>• Shrubs</li> <li>• Perennials &amp; Grasses</li> <li>• Hollies &amp; Azaleas</li> <li>• Ground Covers</li> <li>• Landscape Design &amp; Maintenance</li> </ul>
<b>ChemPro</b> (Matt Pearce) P. O. Box 751 Kenly 919-631-4119 Email: <a href="mailto:matt@chempronc.com">matt@chempronc.com</a> <a href="http://www.chempronc.com">www.chempronc.com</a>	Year Round  <b><u>"See Our Ad on Page 35"</u></b>	<ul style="list-style-type: none"> <li>• Treat yards/trees up to 50 acres</li> <li>• Pesticide controls</li> <li>• Bio-growth stimulant</li> <li>• Granular fertilizer spreading</li> <li>• Blower for trees</li> <li>• Fire ant control</li> <li>• Pond clean up and management</li> </ul>
<b>Coor Farm Supply</b> (Ozzie Coor) P.O. Box 525 / 3 Malta Street Smithfield 800-999-4573 / 919-934-4573 Email: <a href="mailto:mail@coorfarmsupply.com">mail@coorfarmsupply.com</a> <a href="http://www.coorfarmsupply.com">www.coorfarmsupply.com</a>	Mon - Fri 8:00 - 5:00  or by appointment	<ul style="list-style-type: none"> <li>• Pesticides</li> <li>• Fertilizers</li> <li>• Irrigation supplies</li> <li>• Nursery supplies</li> <li>• Greenhouse supplies</li> <li>• Landscape supplies</li> <li>• Make &amp; Sell Greenhouses</li> </ul>
<b>Elevation Plant Nursery &amp; Landscaping, Inc.</b> (Lynn Hardee) 7325 Elevation Rd Benson 919-202-1370 Email: <a href="mailto:lh-epnursery@embarqmail.com">lh-epnursery@embarqmail.com</a> <a href="http://www.epnursery.com">www.epnursery.com</a>	Year Round	<ul style="list-style-type: none"> <li>• Visual Landscape Design</li> <li>• Landscape Installation &amp; Maintenance</li> <li>• Perennials</li> <li>• Trees &amp; Shrubs</li> <li>• Gravel/ Decorative Rock</li> </ul>
<b>Four Seasons Florist</b> (Richard Davis) 119 E. Main St. Benson 919-894-8001 Email: <a href="mailto:fourseasonsflorist@centurylink.net">fourseasonsflorist@centurylink.net</a> <a href="http://www.fourseasonsnc.com">www.fourseasonsnc.com</a>	Mon - Fri 9:00 - 5:00  Saturday 9:00 - 1:00	<ul style="list-style-type: none"> <li>• Florist</li> <li>• Hanging Baskets</li> <li>• Annual Plants</li> <li>• Perennial Plants</li> <li>• Pots</li> <li>• Gifts</li> </ul>

## **Johnston County**

<b>Supplier</b>	<b>Hours</b>	<b>Products &amp; Services</b>
<b>Hinnant's Nursery &amp; Landscaping</b> 1825 Massengill Pond Road Angier 919-639-9761 <a href="http://www.hinnantsnursery.com">www.hinnantsnursery.com</a>	Year Round Mon-Fri 8:00 - 5:00  (March to May) Saturday 8:00 - 12:00 other months call for appt.	<ul style="list-style-type: none"> <li>Locally Grown Shrubs &amp; Trees</li> <li>Specializing in Japanese Maples &amp; Unique varieties of shrubs &amp; trees</li> <li>Wholesale and Retail</li> </ul>
<b>Lakeview Daylily &amp; Koi Farm</b> (Molly Weston) 1000 Benson Rd. Garner 919-413-5168 Email: <a href="mailto:LVDaylily@me.com">LVDaylily@me.com</a> <a href="http://www.weston-farms.com">www.weston-farms.com</a>	June and July Fridays - Sundays 9:00 - 4:00	<ul style="list-style-type: none"> <li>Daylilies 1200 varieties-sold by clump</li> <li>Hardy banana trees, bald cypress</li> <li>Metasequoia, lirioppe &amp; cactus</li> <li>Blueberries, grapevines &amp; figs</li> <li>Koi</li> <li>Free mulch (load your own)</li> </ul>
<b>McLamb Nursery</b> 640 Greenleaf Road Angier 919-894-3709 Email: <a href="mailto:sales@mcclambnursery.com">sales@mcclambnursery.com</a> <a href="http://www.mcclambnursery.com">www.mcclambnursery.com</a>	Mon - Fri 8:00 - 5:00  Closed for lunch 12:00 - 1:00	<ul style="list-style-type: none"> <li>Container plants, trees, &amp; shrubs</li> <li>Field grown trees</li> <li>Wholesale &amp; Retail</li> </ul>
<b>Medlin &amp; Dorman, Inc.</b> (Danny Medlin) 216-218 East Main Street Benson 919-894-3164 919-894-2749 Email: <a href="mailto:DMedlin58@gmail.com">DMedlin58@gmail.com</a>	Mon - Fri 7:30 - 5:30  Saturday 7:30 - 3:00  Sunday closed	<ul style="list-style-type: none"> <li>Annual, Herb, &amp; Vegetable Plants</li> <li>Grass Seed</li> <li>Power &amp; Hand Tools</li> <li>Fertilizers</li> <li>Mulch &amp; Soils</li> <li>Fencing &amp; Drainage Supplies</li> <li>Pecan Cracking</li> </ul>
<b>Stephenson's Landscaping Accessories</b> (Wayne Stephenson) 12100 NC 50 Hwy N. Willow Spring 919-894-2700 Email: <a href="mailto:stephensonsnursery@gmail.com">stephensonsnursery@gmail.com</a>	Mon - Fri 8:00 - 12:00 1:00 - 5:00  Saturday 8:00 - 12:00	<ul style="list-style-type: none"> <li>Mulch</li> <li>Sand</li> <li>Stone &amp; Gravel</li> <li>Compost mix</li> </ul>
<b>Triangle Landscape Supplies</b> 6300 Cornwallis Rd. Garner 919-553-1118 <a href="http://www.trianglelandscapesupplies.com">www.trianglelandscapesupplies.com</a>	Mon - Sat 7:00 - 5:00	<ul style="list-style-type: none"> <li>Permatill</li> <li>VoleBloc (large quantities)</li> <li>Mulches</li> <li>Decorative stone</li> <li>Soil conditioners &amp; Custom soil mixes</li> </ul>
<b>Water &amp; Garden Creations</b> (Frank L. Schwartz) 4618 Jackson-King Road Raleigh 919-632-1847	During growing season  Call for an appointment	<ul style="list-style-type: none"> <li>Aquatic Nursery &amp; Display Gardens</li> <li>Hardy &amp; Tropical Waterlilies</li> <li>Lotus &amp; Shallow Water Plants</li> <li>Quality Goldfish &amp; Koi</li> <li>Water Garden Design Consultation</li> </ul>

## **Johnston County**

<b>Supplier</b>	<b>Hours</b>	<b>Products &amp; Services</b>
<b>Woodard Pecan Nursery</b> (Alton Woodard) 5194 US Hwy. 70 East Princeton 919-965-3561 Email: <a href="mailto:awoodard@woodardpecan.com">awoodard@woodardpecan.com</a> <a href="http://www.woodardpecan.com">www.woodardpecan.com</a>	Mon - Fri 8:00 - 5:00  Call ahead  Sat & Sun Closed	<ul style="list-style-type: none"> <li>• Large Variety of Fruit &amp; Nut Trees</li> <li>• Grapevines</li> <li>• Berry plants</li> <li>• Other fruits</li> <li>• Flowering &amp; Shade Trees</li> </ul>

## **Lee County**

<b>Supplier</b>	<b>Hours</b>	<b>Products &amp; Services</b>
<b>Big Bloomers Flower Farm</b> (Gail Foushee) 275 Pressley Foushee Road Sanford 919-776-6597 Email: <a href="mailto:bigbloomers@windstream.net">bigbloomers@windstream.net</a> <a href="http://www.bigbloomersflowerfarm.com">www.bigbloomersflowerfarm.com</a>	Year Round  Mon - Fri 9:00 - 5:30 Saturday 9:00 - 5:00 Sunday 1:00 - 5:00	<ul style="list-style-type: none"> <li>• Annuals &amp; Perennials</li> <li>• Herbs &amp; Tropicals</li> <li>• Pesticides &amp; Mulch</li> <li>• Lawn ornaments</li> <li>• Shrubs &amp; Fruit Trees</li> <li>• Tools &amp; Rain Barrels</li> <li>• Pots &amp; Potting Soil</li> <li>• Garden Shop</li> </ul>
<b>Big Branch Tree Service</b> (Travis Johnson) 795 Big Branch Road Sanford 919-499-2398 (Home) 910-890-2335 (Mobile)	Year Round  Call for Hours	<ul style="list-style-type: none"> <li>• Tree removal</li> <li>• Stump grinding</li> </ul>
<b>Broadway Hardware &amp; Supply</b> (Frank McDonald) 305 N Main St Broadway 919-258-3843 Email: <a href="mailto:frankmcd@windstream.net">frankmcd@windstream.net</a>	Year Round  Mon - Fri 7:30 - 5:30 Saturday 7:30 - 5:00  Sunday Closed	<ul style="list-style-type: none"> <li>• Locally grown Flower &amp; Vegetable plants</li> <li>• Flower &amp; Vegetable Seeds</li> <li>• Fertilizers &amp; Pesticides</li> <li>• Mulch &amp; Potting Soil</li> <li>• Hand Tools</li> <li>• Trees &amp; Shrubs</li> </ul>
<b>Dale's Garden Center</b> (Dale McKinney) 2848 S. Jefferson Davis Hwy Sanford 919-770-0919 (mobile) Email: <a href="mailto:dalesgreenhouse@windstream.net">dalesgreenhouse@windstream.net</a>	Year Round  Seasonal Hours Also	<ul style="list-style-type: none"> <li>• Annuals, Perennials, Baskets</li> <li>• Vegetable Plants &amp; Seeds</li> <li>• Grass Seed &amp; Garden Tools</li> <li>• House Plants, Potting Soil &amp; Pots</li> <li>• Bird Supplies</li> <li>• Yard Art &amp; Gifts</li> <li>• Fertilizers &amp; Chemicals</li> <li>• Topsoil, Mulch</li> </ul>

## Lee County

<b>Supplier</b>	<b>Hours</b>	<b>Products &amp; Services</b>
<b>Gross Farms</b> (John Gross) 1606 Pickett Rd Sanford 919-498-6727	Seasonal April - August Mon - Sat 8:00 - 8:00 September - October Mon - Sat 7:30 - 6:30 Sunday 1:00 - 6:00	<ul style="list-style-type: none"> <li>• Mulch &amp; Pinestraw</li> <li>• Annual Plants</li> <li>• Bean Shelling / Pecan Cracking</li> <li>• Christmas Trees</li> <li>• Pick your own Fruits &amp; Vegetables</li> <li>• Seasonal Plants</li> <li>• Vegetables &amp; Produce</li> </ul>
<b>Patterson Farms &amp; Greenhouses</b> 10712 US 421 North Broadway 919-258-6086 Like us on Facebook	Open February to June	<ul style="list-style-type: none"> <li>• Pesticide-free greenhouse tomatoes &amp; cucumbers (February– June)</li> <li>• Roadside Stand</li> </ul>
<b>Jackson Bros. BBQ &amp; Produce</b> (Danny Jackson) 2424 Jefferson Davis Hwy Sanford 919-776-6632 919-776-8887 Email: <a href="mailto:info@jacksonbros.com">info@jacksonbros.com</a> <a href="http://www.jacksonbros.com">www.jacksonbros.com</a>	Year Round Mon - Sat 7:00 - 7:00	<ul style="list-style-type: none"> <li>• Vegetables &amp; Produce</li> <li>• Jelly &amp; Preserves</li> <li>• Annuals, Perennials, Baskets &amp; Herbs</li> <li>• Vegetable Plants &amp; Seeds</li> <li>• Fertilizers, Pesticides &amp; Lime</li> <li>• Topsoil, Mulch, Potting Soil</li> <li>• Storage Buildings</li> <li>• Pumpkins &amp; Christmas Trees</li> </ul>
<b>Spivey Produce</b> (Frankie Spivey) 285 McCormick Rd. Sanford 919-499-0807 <a href="http://www.spiveyfarm.com">http://www.spiveyfarm.com</a>	Open Mid April to August 1 Call for Hours	<ul style="list-style-type: none"> <li>• Pick your own strawberries</li> <li>• Fresh vegetables, sweet corn</li> <li>• Meats</li> <li>• Jams &amp; jellies</li> <li>• Shelling services</li> <li>• Road Side Stand</li> </ul>
<b>Thomas Farm Service, Inc.</b> (Gattis Jr. or Jeffrey Thomas) 11025 Old US 421 Broadway 919-258-3931	Year Round Mon - Fri 7:00 - 5:00	<ul style="list-style-type: none"> <li>• Fertilizers &amp; Pesticides</li> <li>• Garden &amp; Grass Seed</li> <li>• Field Crop Seeds</li> <li>• Deer Corn</li> <li>• Hay &amp; Soybean Buyers</li> </ul>
<b>Tramway Stone &amp; Mulch</b> (Gregg Dodson) 2600 S. Jefferson Davis Hwy Sanford Email: <a href="mailto:tramwaystone@aol.com">tramwaystone@aol.com</a> <a href="http://www.tramwaystone.com">www.tramwaystone.com</a>	Year Round Mon - Fri 8:00 - 5:00 Saturday 8:00 - 3:00	<ul style="list-style-type: none"> <li>• Natural &amp; Cultured Stone</li> <li>• Fountains, Ponds &amp; Pond Equipment</li> <li>• Mulch &amp; Decorative Rock</li> <li>• Retaining Wall block &amp; other Hardscape Products, Cross Ties</li> <li>• Plants</li> <li>• Rain Barrels &amp; Storage Sheds</li> <li>• Build-a-pond Seminars</li> </ul>



## Lee County

Supplier	Hours	Products & Services
<b>Tuffvision Landscape, Inc.</b> (Samuel R. Dowdy/Tuff) 1108 West Landing Drive Sanford 919-708-3178 Email: <a href="mailto:tuffvisionscape@aol.com">tuffvisionscape@aol.com</a> <a href="http://www.tuffvisionlandscapeanddesigninc.com">www.tuffvisionlandscapeanddesigninc.com</a>	Year Round  Mon - Fri 8:00 - 5:00	<ul style="list-style-type: none"> <li>• NC Registered Landscape Contractor #1778</li> <li>• Yearly Ground Maintenance Contracts</li> <li>• All Grounds</li> <li>• Insured</li> <li>• H.U.B. Certified</li> <li>• NC Pesticide Application #026-3167</li> </ul>

## Sampson County

Supplier	Hours	Products & Services
<b>Baskets &amp; Flowers Greenhouses Inc.</b> (Efferson & Mary Dawn Bass) 5390 Harnett Dunn Hwy Dunn 910-594-0812	Mon - Fri 8:00 - 6:00  Saturday 8:00 - 4:00	<ul style="list-style-type: none"> <li>• Annuals &amp; Perennials</li> <li>• Trees &amp; Shrubs</li> <li>• Vegetables Plants</li> <li>• Seasonal Plants &amp; Hanging Baskets</li> </ul>
<b>Cavanaugh Agri Sales</b> (John Edward Cavanaugh) 5661 Plain View Hwy Dunn 910-892-5043	Year Round  Mon - Fri 8:00 - 5:00 Saturdays: Spring & Summer 8:00 - 12:00	<ul style="list-style-type: none"> <li>• Vegetable seeds &amp; Plants</li> <li>• Lawn seed, Fertilizers &amp; Pesticides</li> <li>• Potting soil &amp; Pinestraw</li> <li>• Small Grain Seed - Soy Bean Seed</li> <li>• Grain Buying from Farmers</li> <li>• </li> </ul>
<b>Tri State Turf</b> (Clark Wooten) 2700 Timothy Rd Dunn 910-567-2625	Mon - Fri 8:00 - 5:00	<ul style="list-style-type: none"> <li>• Sod: Bermuda, Centipede, Zoysia and Fescue</li> </ul>

## Wake County

Supplier	Hours	Products & Services
<b>Campbell Road Nursery</b> Address: 2500 Campbell Road Raleigh, NC 27606 (919) 854-9892 <a href="http://www.campbellrdsnursery.com">http://www.campbellrdsnursery.com</a>	Open Monday - Saturday 9:00 - 5:00  Open Sunday September 27 October 4 and 11 November 29 December 6 and 13	<ul style="list-style-type: none"> <li>• Annuals</li> <li>• Perennials</li> <li>• Shrubs</li> <li>• Fruit Trees</li> <li>• Garden Vegetables</li> <li>• Christmas Trees</li> </ul>

## **Wake County**

<b>Supplier</b>	<b>Hours</b>	<b>Products &amp; Services</b>
<b>The Country Market Store</b> (John Musolino) 7709 S. NC 55 Hwy Willow Spring 919-802-6100 <a href="mailto:hey@countrymarketstore.com">Email:hey@countrymarketstore.com</a>  <a href="http://www.countrymarketstore.com">www.countrymarketstore.com</a>	Year Round  Please check website for Seasonal hours  Mon. - Sat. 9:00 - 6:00 Sun. 11 - 5	<ul style="list-style-type: none"> <li>Plants</li> <li>Compost</li> <li>Sod</li> <li>Produce</li> <li>Bulk Mulch</li> <li>Firewood</li> </ul>
<b>David Holland Produce</b> (David Holland) 8304 Purfoy Road (Purfoy & Holland) Fuquay 919-422-7122  Holland Farms Produce (Facebook)	Seasonal  Mon - Fri 9:00am - 5:00pm  Sat 9:00am - 2:00pm	<ul style="list-style-type: none"> <li>Fresh Vegetables &amp; Produce</li> <li>Roadside Stand</li> <li>Christmas Trees</li> </ul>
<b>The Garden Hut</b> (Nelsa Cox) 1004 Old Honeycutt Road Fuquay-Varina 919-552-0590 <a href="http://nelsasgardenhut.com">http://nelsasgardenhut.com</a>	Mon - Fri 9:00 - 5:00  Sat 9:00—3:00  Sundays—Seasonal 12:00 - 5:00  Check website for holiday hours	<ul style="list-style-type: none"> <li>Annuals &amp; Perennials</li> <li>Woody ornamentals</li> <li>Garden accessories &amp; Gifts</li> <li>Pottery</li> <li>Mulch &amp; Fertilizer</li> <li>Monthly Seminars</li> <li>Consultation &amp; landscape installation</li> <li>Christmas Shop in Nov and Dec</li> </ul>
<b>J &amp; J Mulch Company, Inc.</b> (Jack Searcy) 7929 Saunders Rd Willow Spring 919-552-6652 Hwy 55, 3 miles north of Angier	Call for hours	<ul style="list-style-type: none"> <li>Hardwood and Pine Bark Mulches</li> </ul>
<b>MOSS' Const. Co.</b> MULCH, TOPSOIL, GRAVEL, STONE 2901 NC 42 Highway (Corner of NC 42 and Old Stage Road) Willow Spring, NC 27592 919-552-3013 (Office) 919-779-1985 (David Moss) Email: <a href="mailto:mossdavid@aol.com">mossdavid@aol.com</a> <a href="http://www.mossconstco.com">www.mossconstco.com</a>	Year Round  Mon - Fri 8:00 - 5:00  Saturday 8:00 - 4:00  <After hours 919-779-1985>	<ul style="list-style-type: none"> <li>Topsoil, Gravel, Stone</li> <li>Fill Dirt</li> <li>Compost</li> <li>Sand</li> <li>Rubber Mulches</li> <li>Playground Chips</li> <li>Pine bark/Nuggets</li> <li>Firewood</li> <li>Driveways Installed</li> <li>Tree Removal &amp; Stump Grinding</li> <li>Bag Mulch and Topsoil</li> <li>Pickup or Delivery Available</li> <li>Installation Available</li> </ul>

## **Wake County**

<b>Supplier</b>	<b>Hours</b>	<b>Products &amp; Services</b>
<b>Ogburn Berries and Produce</b> (Simeon Ogburn) 13065 Old Stage Rd Willow Spring 919-868-3362 <a href="http://www.ogburnberriesandproduce.com">www.ogburnberriesandproduce.com</a> <a href="mailto:slogburn11@gmail.com">slogburn11@gmail.com</a>	Seasonal April - Labor Day  Mon - Sat 9:00 - 7:00  Sunday 1:00 - 6:00	<ul style="list-style-type: none"> <li>• Strawberries</li> <li>• Blueberries</li> <li>• Tomatoes</li> <li>• Peaches</li> <li>• Apples</li> <li>• Watermelon</li> <li>• Cantaloupe</li> <li>• Pumpkins and Mums</li> <li>• Sweet Corn, Peas, Beans, Squash</li> </ul>
<b>Olive's Tree Farm</b> (Matt and Candace Olive) 1908 Holland Rd Willow Spring, NC 27592 919-552-1304 (office) Email: <a href="mailto:olivefarmrgmc@aol.com">olivefarmrgmc@aol.com</a> <a href="http://www.olivestreefarm.com">www.olivestreefarm.com</a>	Open Year Round Mon - Fri 8:00am - 5:00pm Open Saturdays Seasonally Spring and Fall Sunday Closed  <b><u>"See Our Ad on Page 36"</u></b>	<ul style="list-style-type: none"> <li>• Container Grown Trees &amp; Shrubs</li> <li>• Azaleas, Blueberries &amp; Camellias</li> <li>• Loropetalum, Hollies, Magnolias</li> <li>• Maples &amp; Japanese Maples</li> <li>• Roses</li> <li>• Topiaries</li> <li>• Weeping Willows</li> <li>• Groundcovers</li> </ul>
<b>Porter Farms &amp; Nursery</b> (Ashley & Crissy Porter) 3525 NC 42 Hwy Willow Spring 919-567-0504 Email: <a href="mailto:GetFresh@PorterFarmsandNursery.com">GetFresh@PorterFarmsandNursery.com</a> <a href="http://www.PorterFarmsandNursery.com">www.PorterFarmsandNursery.com</a>	Open April - Halloween	<ul style="list-style-type: none"> <li>• Strawberries</li> <li>• Tomatoes</li> <li>• Watermelons &amp; Peaches</li> <li>• Beans &amp; Sweet Corn</li> <li>• Cantaloupe</li> <li>• Pumpkins &amp; Gourds</li> <li>• Mums</li> </ul>
<b>Soil Toppers, Inc.</b> (Adam Kinton) 1508 North Main Street Fuquay Varina 919-552-8444 919-868-9151 (mobile) Email: <a href="mailto:SoilToppers@gmail.com">SoilToppers@gmail.com</a> <a href="http://www.SoilToppers.com">www.SoilToppers.com</a>  <u>We are on Facebook</u>	<b>Spring/Summer/Fall</b>  Mon - Fri 8:00 - 5:00 Saturday 8:00 - 4:00  <b>Winter</b>  Mon - Fri 8:00 - 5:00 Saturday 8:00 - 1:00  <b><u>"See Our Ad on Page 37"</u></b>	<ul style="list-style-type: none"> <li>• Large selection of Mountain stone by the pallet or by the pound</li> <li>• Organic Topsoil mix</li> <li>• Flagstone &amp; River Rock</li> <li>• Hand tools</li> <li>• Triple-shred mulch (natural no dye)</li> <li>• NC Longleaf Pine straw</li> <li>• Wheat straw</li> <li>• Bobcat services</li> <li>• Fire Pits</li> </ul>
<b>Twin Oaks Feed &amp; Supply</b> (Connie Tutor) 8501 Kennebec Rd Willow Spring 919-557-2297 Email: <a href="mailto:twinoaksfeedandsupply@gmail.com">twinoaksfeedandsupply@gmail.com</a> <a href="http://www.twinoaksfeedandsupply.com">www.twinoaksfeedandsupply.com</a>	Year Round  Tue - Fri 9:00 - 6:00 Saturday 8:00 - 1:00  Closed Sunday & Monday	<ul style="list-style-type: none"> <li>• All Natural Garden Products</li> <li>• Wheat Straw</li> <li>• Fire Ant Control</li> <li>• Variety of Garden Plants in Spring</li> <li>• Garden Seeds</li> <li>• Potting Soil</li> <li>• Fertilizers</li> </ul>



(Eric Jensen)

61 North Raleigh St.  
Angier 27501  
919-275-9779

Mon-Fri 8:00am - 7:00pm

Sat 8:00am - 6:00pm

Sun 10:00am - 6:00pm

## Products and Services



Very good selection of fasteners

Lawn & Garden

Key Cutting

Paint Color Matching

Plumbing and Electrical

Decorative Rock

Drainage Supplies

Fertilizers & Pesticides

Fire Ant Control

Firewood

Hand & Power Tools

Mulch, Soil Amendments &

Topsoil

Pots & Potting Soil

Annual & Seasonal Plants

Vegetables and Flower Seeds



# **Angier Florist**

## **Your Hometown Florist**



**We are a small, private business that specializes in adding beauty to your surroundings. We are here to serve you and your family for any occasion. We create special, personalized arrangements for: All Holidays, Weddings, Proms, Birthdays and Anniversaries of all kinds.**

**We also specialize in funerals. We are honored to help you express your sympathy during a time of death. We offer personalized consultations with the immediate family and loved ones. We are available after hours when needed. We offer casket sprays, standing sprays, wreaths, baskets, urns and fresh arrangements. We can create specialized pieces – Crosses, Hearts, broken wheels. Nothing is out of the question. We have cemetery statues and garden decorations and Memorial Plaques.**

**We have gift baskets, gourmet food and fruit baskets, and spa baskets.**

**Full-time horticulturalist to help you select the appropriate plants and learn how to care for your plants after they get to your home.**

**Come see us for all your florist needs.**

*Anna Wilkins*

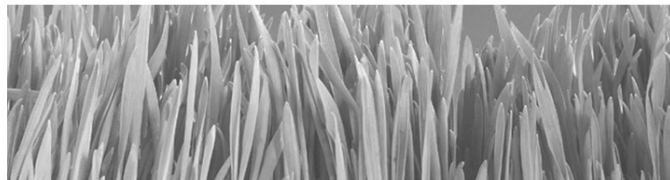


*Keeping It Green  
With DMG Turf*

Confederate Tall Fescue Blend  
Tifway 419 Bermuda  
TifGrand Bermuda (Shade Tolerant)  
Common Centipede  
Compadre Zoysia

*Delivery Available*

Contact Clay Gardner  
Office: (919) 639-4027 Fax: (919) 639-6312



**DMG**

**T U R F**

997 Matthews Mill Pond Road  
Angier, NC 27501

Email: [sales@dmgturf.com](mailto:sales@dmgturf.com)

Website: [www.dmgturf.com](http://www.dmgturf.com)



# Jabez Floristry

47A South Broad Street East

Angier, NC 27501

(919) 639-0835

~When Words Are Not Enough ~ Flowers Say It Best~

## Email:

jabezfloristry@yahoo.com

## Website:

[www.jabezflorist.com](http://www.jabezflorist.com)

For after hours assistance  
call: 919-614-2106



## Monday - Friday

9:00 am - 5:30 pm

## Saturday

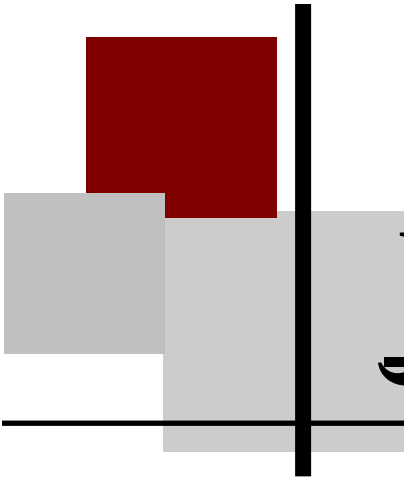
9:00am—2:00pm

## Flowers For All Occasions



Weddings  
Funerals  
Birthdays  
Anniversaries  
Cut Arrangements  
Potted Plants  
Silks  
Balloons  
Wreaths  
Holidays  
and  
Just Because





“Innovative products along with  
personal service is our commitment.”

# Jarco Supply

## Jarco Locations:

### **Wake Forest / Youngsville**

100 AG Drive, Youngsville, NC 27596  
(Corner of Hwy 96 & AG Drive)  
919-562-0123  
FAX 919-562-1806

### **Fuquay / Lillington**

30 Jarco Drive, Fuquay-Varina, NC  
27526  
(Corner of Hwy 401 S. & Jarco Drive)  
919-586-0123  
FAX 919-586-0129

### **Greensboro**

811 Knox Road  
McLeansville, NC 27301  
(Exit 132 I40/85 Mt. Hope Church Rd )  
336-652-0101  
FAX 336-701-6301

- Hydroseeding Supplies
- Contractor Seed Mix
- Erosion Control Seed Mix
- K—31 Fescue
- Triple Blend Fescue
- Rye Grass
- Custom Blended Mixes
- Fertilizer & Lime
- Fabricated Rebar Packages
- Woven & Non-Woven Fabrics
- Petromat / Petrotac
- Silt Fence
- Silt Stop
- HIVU Barrier Fence
- Hog Rings & Zip Ties
- GeoGrid / GeoCells
- Gutter Buddies
- Excelsior Matting
- Straw Blankets
- Coconut Blankets
- Poly / Fiber Permanent Blankets
- Jute Matting
- Tree Protection Signs
- Safety & Protection Fence
- Arbor Tie

We also stock a full line of supplies for  
The Construction Industry such as:  
Concrete & Masonry Accessories  
Pipe & Drainage Supplies  
Rebar Fabrication

*Call us today with your Horticulture & Gardening needs!*



6016 US 401 North  
Fuquay (South of Kipling)

Email: [pigsandproduce@gmail.com](mailto:pigsandproduce@gmail.com)

**Open Sept 15 - Nov 4, 2018**

Monday - Thursday *by appointment only*

**910-249-2258** *Please call anytime!*

Fri 1:00pm - 6:00pm

Sat 9:00am - 6:00pm *1st hayride will start at 10am*

Sunday 1:00pm - 6:00pm

Last ticket sold 1 hour before closing



**Monday - Friday  
8:00 am - 5:00 pm**



**In God We Trust**



**Through Christ We Are Saved**

**RLTandASSOCIATES.net**

**919-552-4489**

## **Services**

- **Hauling & Grading**
- **Driveways**
- **Excavating & Demolition**
- **Site Development**
- **Snow Removal**
- **Street Cleaning**
- **Install and repair water and sewer lines**
- **Hydro-Jetting Services and Video Inspection**
- **Water Mains**
- **Manholes**
- **Install and Repair Fire Protection and Fire Hydrants**
- **Emergency Utility Repair Service 24/7**
- **Access Roads**
- **Sink Holes**
- **Storm Drain Cleaning and Installation**



- **Top Soil**
- **Sand**
- **Stone**
- **Gravel**
- **Fill Dirt**

## **Our Commitment**

- **Integrity**
- **Responsibility**
- **Performance**
- **Quality**

**rltandassociates.net**

**Email: [rlt@rltandassociates.net](mailto:rlt@rltandassociates.net)**





*"We appreciate your business."*



**Phone:**  
(919) 639-4598  
**Fax:**  
(919) 639-7596

**\*Hours:**  
**8:00-5:00**  
**Mon-Sat**

**\* Seasonal Hours**  
*Please call or  
check our website*

Summer & Fall  
Saturday 8:00 am - 1:00pm

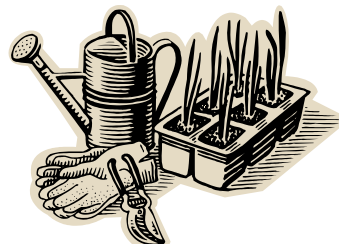
**Wholesale  
&  
Retail**

**Owner:**  
**Larry D. Fish**

**Dusty Wilson**  
**Manager**

7160 OLD STAGE RD. N  
ANGIER, NC 27501  
[www.tarheelnursery.com](http://www.tarheelnursery.com)  
[tarheelnursery@gmail.com](mailto:tarheelnursery@gmail.com)

- DECORATIVE CABBAGE, KALE, MUSTARD
- GARDEN SEED (spring & fall)
- BAGGED SOIL & COW MANURE
- VEGETABLES PLANTS (spring & fall)
- TOMATO PLANTS— some Heirloom
- ANNUALS / BEDDING PLANTS
- BEAUTIFUL FERNS
- HANGING BASKETS
- PERENNIALS
- HERBS
- GARDEN MUMS
- PANSIES
- POINSETTIAS
- FERTILIZERS
- PESTICIDES





# WATKINS

## FARM SERVICE

**52 Camellia Rd  
Angier NC 27501**

**Hours:  
Mon-Fri 7am-6pm  
Sat 7am-12noon**

**Phone:  
919-639-0686**

**Email:  
watkinsfarmservice@gmail.com**

- Round-Up
- KY-31 Fescue
- Fescue Blends
- Contractor Seed Mix
- Bermuda Seed
- Centipede Seed
- Pearl Millet
- Weed N Feed
- Pond Dyes and Algae Control
- Ice Melt
- Garden Fertilizer
- Soybean & Corn Seed
- Bulk Fertilizer Sales
- Slow Release Fertilizer
- Fertilizer with pre-emerge
- Pecan Tree Fertilizer
- Herbicides & Pesticides
- Sod Staples
- Silt Fence
- T-posts
- Excelsior matting
- Chemicals
- Fire Ant Control
- Ryegrass Seed
- Lime
- Wheat Straw
- Pine Straw
- Driveway Pipe
- Corrugated Drainage Pipe
- Pipe fittings
- Deer Corn

**Now offering custom  
fertilizer applications  
on larger areas.**

**Delivery Available**

**Family Owned and  
Operated**

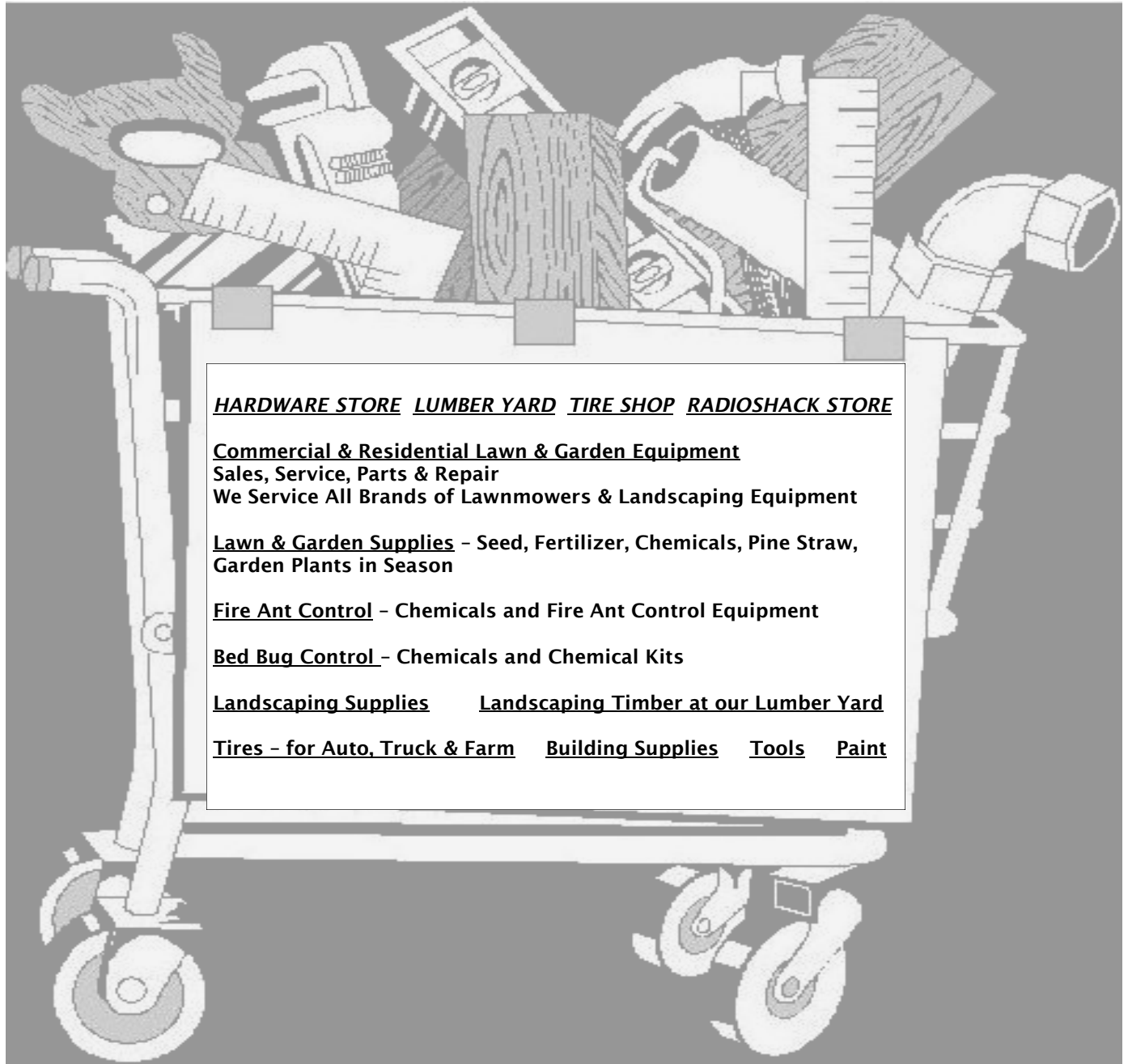




# **J.E. Womble & Sons**

*call Ray H. Womble, Jr. or any of the helpful employees at*

**910 – 893 – 5753**



**HARDWARE STORE LUMBER YARD TIRE SHOP RADIOSHACK STORE**

**Commercial & Residential Lawn & Garden Equipment**

**Sales, Service, Parts & Repair**

**We Service All Brands of Lawnmowers & Landscaping Equipment**

**Lawn & Garden Supplies – Seed, Fertilizer, Chemicals, Pine Straw,  
Garden Plants in Season**

**Fire Ant Control – Chemicals and Fire Ant Control Equipment**

**Bed Bug Control – Chemicals and Chemical Kits**

**Landscaping Supplies      Landscaping Timber at our Lumber Yard**

**Tires – for Auto, Truck & Farm    Building Supplies    Tools    Paint**

**Forest Hills Shopping Center, Lillington, NC 27546**



## McGill Premium Compost

***Our climate-controlled facilities scientifically enhance the composting process to deliver:***

- Reduced water needs by up to 50%
- Increased porosity for better drainage
- Slow release of beneficial nutrients
- Consistent, reliable performance
- Greater disease and pest resistance
- Better soil to seed contact for quicker turf establishment
- Higher yields with fewer chemicals



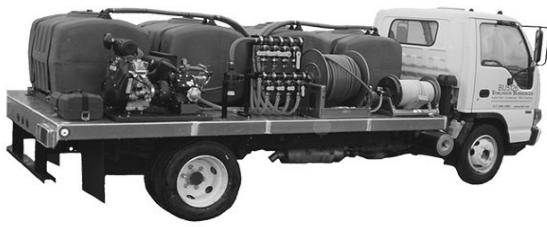
**Our Agriculture, Landscaper, and Nursery customers use McGill Premium Compost for mainly one reason — IT WORKS!**



**McGill SoilBuilder premium compost meets all three compost use classifications of the US Composting Council's Consumer Use Program for Seal of Testing Assurance certified products.**

**Locate a McGill Premium Compost Reseller by visiting:**  
[www.mcgillcompost.com](http://www.mcgillcompost.com)





A healthy landscape doesn't happen by itself.  
It needs specialized and timely care.

We are a family-owned and operated company serving Harnett and surrounding counties providing year-round personalized service to ensure your lawn and trees are protected against pests and looking their best in every season.

## YEAR-ROUND SERVICES

Treat residential yards and trees up to 50 acres  
Apply seasonal pesticide (herbicides and insecticides) controls  
Bio-Growth stimulant and granular fertilizer spreading  
Apply timely fertilizer and weed pre-emergent in lawns and shrub beds  
Deep root feedings for trees and plants needing extra nourishment  
Dormant oil sprays for shade, ornamental and fruit trees  
Individual customized maintenance programs  
Fire ant control  
Pond Cleanup and Management Program  
Best Management Practices for your landscape



Contact  
Matt Pearce  
**919-631-4119**  
to schedule an appointment  
to begin revitalizing your  
landscape.



# Olive's Tree Farm

## Container Grown Trees and Shrubs

1908 Holland Road  
Willow Spring, NC 27592

### Products:

- ♦ Azaleas
- ♦ Blueberries
- ♦ Camellias
- ♦ Hollies
- ♦ Jap. Maples
- ♦ Loropetalums
- ♦ Magnolias
- ♦ Maples
- ♦ Roses
- ♦ Topiaries
- ♦ Weeping Willows
- ♦ And many other Trees,

### Open Year Round

Mon-Fri: 8:00am-5:00pm

Open Saturday Seasonally

Spring and Fall

Closed Sunday

Matthew or Candace Olive

Office (919) 552-1304

Any Questions, Feel Free to Email or Call Us

[olivefarmrgmc@aol.com](mailto:olivefarmrgmc@aol.com)

Family Owned & Operated

[www.olivestreefarm.com](http://www.olivestreefarm.com)







**Spring/Summer/Fall**

Monday - Friday  
8:00 am - 5:00 pm  
Saturday  
8:00am - 4:00 pm



**Winter**

Monday - Friday  
8:00 am - 5:00 pm  
Saturday  
8:00am - 1:00 pm

Designer Color Mulches  
(Red, Black, Chocolate)  
Triple-Shred Hardwood  
Mulch  
NC Long-leaf Pine Straw  
Wheat Straw

**Family-Owned and Operated**

James, Regina,  
Kyle, and Adam Kinton

**Email:**

[SoilToppers@gmail.com](mailto:SoilToppers@gmail.com)

**Website:**

[www.soiltoppers.com](http://www.soiltoppers.com)

NC Mountain Stone by the  
pallet or the pound  
Flagstone  
#57 Stone, #78 Stone, ABC  
Class B Rip Rap  
River Rock  
Decorative Rock

**Same-Day Delivery and Installation Service Available**

Mortar Sand  
Granite Sand  
Polymeric Sand  
Screened and Unscreened Top Soil  
Organic Top Soil Mix  
Sod Available

Bobcat  
Services  
Available

Dog Kennels  
Hand Tools

Fire Pits  
Fireplace Kits  
Concrete Pavers  
Retaining Wall Blocks



Gary Harris

100 W. Edgerton St.,  
Downtown Dunn 28335  
**910-892-3067**

Gale Harris

# Do you want to become a Harnett County Master Gardener<sup>SM</sup> Volunteer?

See page 3 for additional information

To register contact:

Selena McKoy, Horticulture Agent  
126 Alexander Dr.  
Lillington, NC 27546  
910-893-7530  
[sdmckoy@ncsu.edu](mailto:sdmckoy@ncsu.edu)



# Harnett County Horticulture Resource Guide

For changes / additions or new entries, return this form to:

**NC State Extension Master Gardener<sup>SM</sup> Volunteers of Harnett County**

**Attn: Resource Guide Committee**

**126 Alexander Drive, Suite 300, Lillington, NC 27546**

**910-893-7530 phone 910-893-7539 fax**

Check one: ☐ No Changes ☐ Changes / Additions ☐ New Entry ☐ Paid Ad

Master Gardener Contact	
Business Name:	
Owner/Contact Name:	
Physical Address:	
Phone Numbers:	
Email Address:	
Website:	
County located in:	
Seasonal/ Year round:	
Days & Hours of operation:	
Products/Services: (Please be detailed)	

## Index Listings Check each product or service to be listed in the index

Annual Plants		Gravel / Decorative Rock		Pine Straw	
Aquatic Plants		Ground Cover		Pots & Potting Soil	
Arborist		Hand Tools		Power Tool & Equipment Rental	
Bean Shelling/Pecan Cracking		Hanging Baskets		Power Tool & Equipment Repair	
Christmas Trees		Hardscape		Power Tool & Equipment Sales	
Compost		Herb Plants		Roadside Stand	
Drainage Supplies		Irrigation Installation & Supplies		Seasonal Plants	
Fencing		Landscape Design		Site Work, Grading, Hauling, Backhoe	
Fertilizers		Landscape Installation		Sod	
Fire Ant Control		Landscape Maintenance		Soil Amendments	
Firewood		Landscape Ornamentation		Storage Sheds	
Florist		Mulch		Topsoil	
Fresh Vegetables & Produce		Perennial Plants		Tree Removal & Pruning	
Fruit Trees		Pesticides		Trees & Shrubs	
Grass Seed		Pick your own Fruits/Vegetables		Vegetable & Flower Seeds	

**Due by OCTOBER 31, 2019 for 2020 Resource Guide**

# Ask a Master Gardener<sup>SM</sup> Volunteer

**Got Fire Ants?**

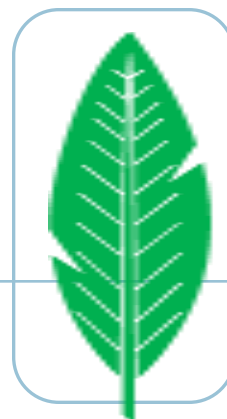
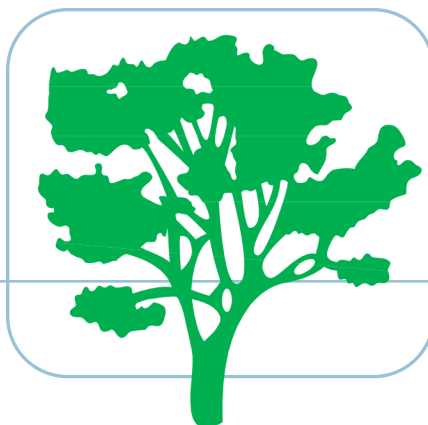
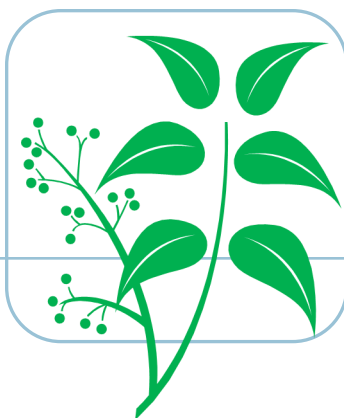
**Lawn not growing well?**

**Vegetable garden needs help?**

**New to the area and need some advice?**

**910-893-7530**

*Master Gardener<sup>SM</sup> Volunteers work with Cooperative Extension under the guidance and support of the Horticulture Extension Agent*



Call your NC Extension Master Gardener<sup>SM</sup> Volunteers for information (or questions) regarding lawns, vegetables, trees, ornamentals, fruits, plant problems and pests, soils, diseases, and many other horticulture-related issues.

If you are new to the area, Master Gardener<sup>SM</sup> Volunteers can offer answers to many of the questions you may have about gardening in North Carolina.

NC Dept. of Agriculture offers soil testing. Ask a Master Gardener<sup>SM</sup> for a soil test kit. We can also help you understand the test results and recommendations.

*Love to garden? Ask about becoming a Master Gardener<sup>SM</sup> yourself.*

## **HARNETT COUNTY MASTER GARDENER VOLUNTEERS<sup>SM</sup>**

**126 Alexander Drive, Lillington**

**[mastergardener@harnett.org](mailto:mastergardener@harnett.org)**



**HARNETT COUNTY CENTER**

**910-893-7530**

Office Hours:  
Mon—Fri 9am – 3pm