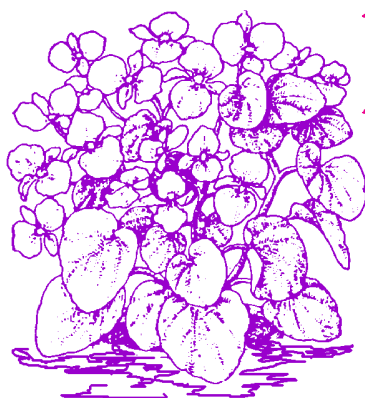


**1997**  
**NORTH CAROLINA STATE UNIVERSITY**  
**WINTER ANNUALS EVALUATION**

by  
**Douglas A. Bailey**  
**Floriculture Research and Extension**  
with technical assistance from  
**Bernadette Clark**



**Department of Horticultural Science**  
**North Carolina State University**  
**Raleigh, North Carolina**  
**Horticultural Research Series No. 124**

---

---

## Table of Contents

	Page
Introduction . . . . .	1
Explanation of Cultivar Evaluations . . . . .	2
Sources of Seeds . . . . .	4
N.C. State Leaders of the Pack Recipients . . . . .	4
NCSU Exceptional Performance Winners. . . . .	5
Series Ratings and Cultivar Performance. . . . .	5

---

---

## Introduction

Pansies have become the most popular annual for mid-autumn to late-spring color in the Southeast. Intensive breeding programs selecting for unique flower colors, large flower size, greater flower number, and temperature tolerance have led to many new and exciting cultivars to choose from for use in the landscape. With all the different cultivars available, selecting which ones to grow for customers (and which ones to plant in the landscape) can be a difficult task. During November 1996 through April 1997, we evaluated 114 pansy selections plus 4 viola entries and recorded how well they performed in the North Carolina landscape.

The trial gardens are located at the North Carolina State University Horticulture Field Laboratory, 4301 Beryl Road, in Raleigh. The site is located on lat. 35°47'N, long. 78°42'W with an elevation of 400 ft. Transplants grown in 2.5" × 2.2" containers were planted in the trial garden on 5 November 1996, and plant spacing in the trial

was 10" × 12" (in-row × between-row spacing). Twelve plants of each entry were used to evaluate the performance of single-color cultivars, and 24 plants (two rows) were evaluated for each mix.

Weather during the winter and spring of 1997 was relatively mild and most pansies continued flowering throughout the season. Temperatures in December (+6%), January (+2%), February (+11%) and March (+9%) were above normal (Table 1 and Figure 1). November (-10%) and April (-7%) were below normal, and the cooler temperatures at the beginning and end of the season seemed to extend the flowering for many cultivars. Overall, the seasonal daily average temperature was 48.5, less than 1 °F above the 30 year average of 47.9 °F for the same time period.

Precipitation fluctuated during the six month trial with 4 months well below average, 1 month with average precipitation, and April well above average (Table 1 and Figure 2). However, overall, we received 21.3 inches of precipitation, which is

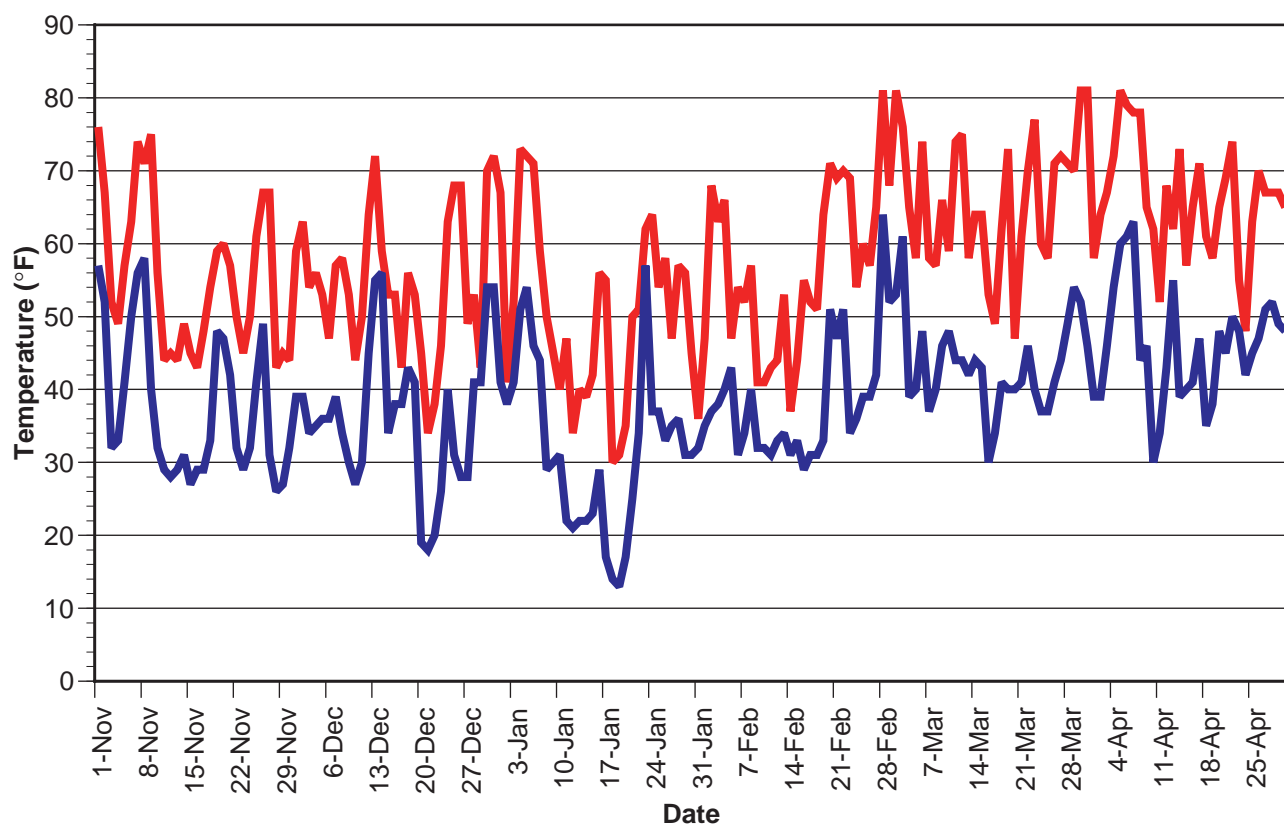


Figure 1. Daily minimum and maximum temperatures for Raleigh, North Carolina from 1 November 1996 to 30 April 1997.

**Table 1. Solar energy, temperature and precipitation for November 1996 through April 1997 and 30 year temperature and precipitation averages for Raleigh, N.C.**

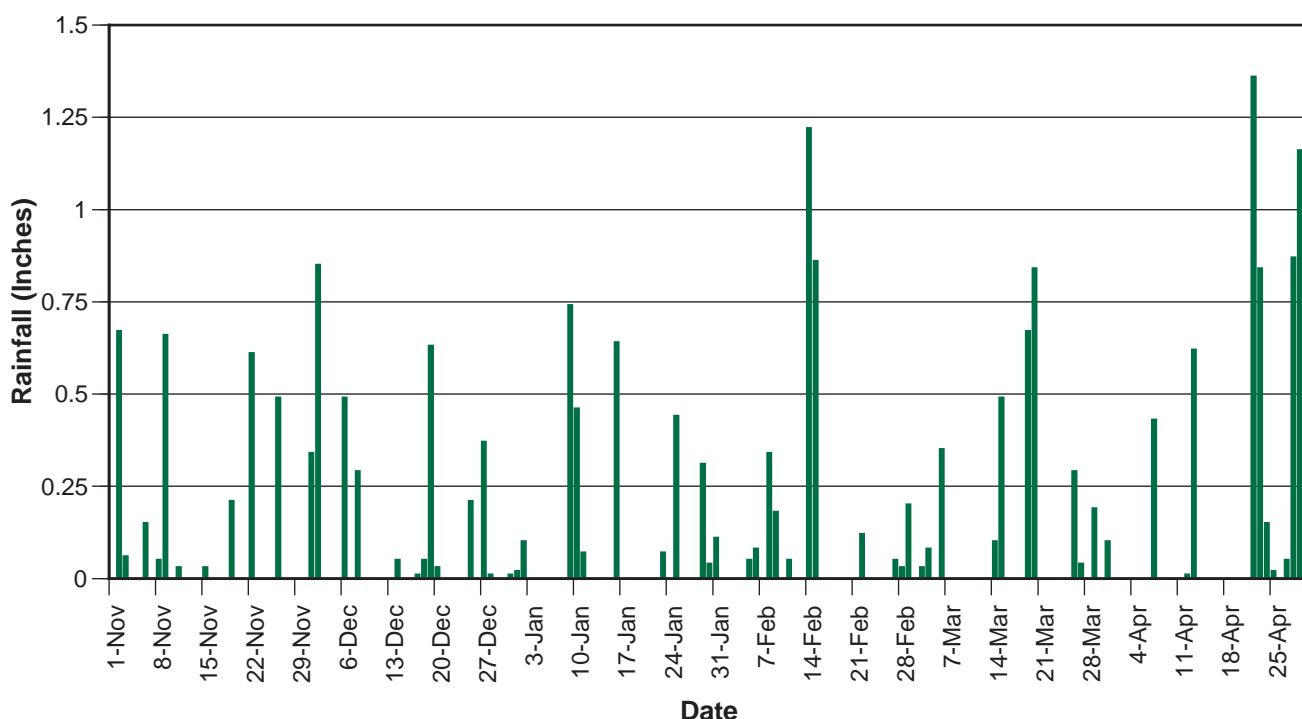
Month	Daily average solar radiation received (Langley/day)	Daily average temperature (°F) and percent change from 30 year avg	30 year average daily temperature (°F)	Monthly precipitation (inches) and percent change from 30 year avg	30 year average monthly precipitation (inches)
November	203	46.4 (-10%)	51.7	2.96 (-13%)	3.40
December	163	45.6 (+6%)	42.9	3.34 (0%)	3.34
January	225	41.2 (+2%)	40.2	3.00 (-21%)	3.79
February	228	46.9 (+11%)	42.1	2.98 (-21%)	3.75
March	361	54.7 (+9%)	50.1	3.38 (-19%)	4.19
April	430	56.0 (-7%)	60.4	5.64 (+68%)	3.36

19% below our 26.3 inch average precipitation for the seven month period.

The fertilization program for the plants consisted of a preplant incorporation of 17-17-17 and monthly broadcasts of 15.5-0-0 through March. No pesticide applications were made during the evaluation in order to document major pest problems, and no major pest or disease problems were noted throughout the trials.

## Explanation of Cultivar Evaluations

Plants were given a visual rating by the same individual once a week for 22 weeks beginning 27 November 1996 (week 48 of 1996), three weeks after planting through 23 April (week 17 of 1997). Entries were



**Figure 2. Precipitation received from 1 November 1996 to 30 April 1997.**

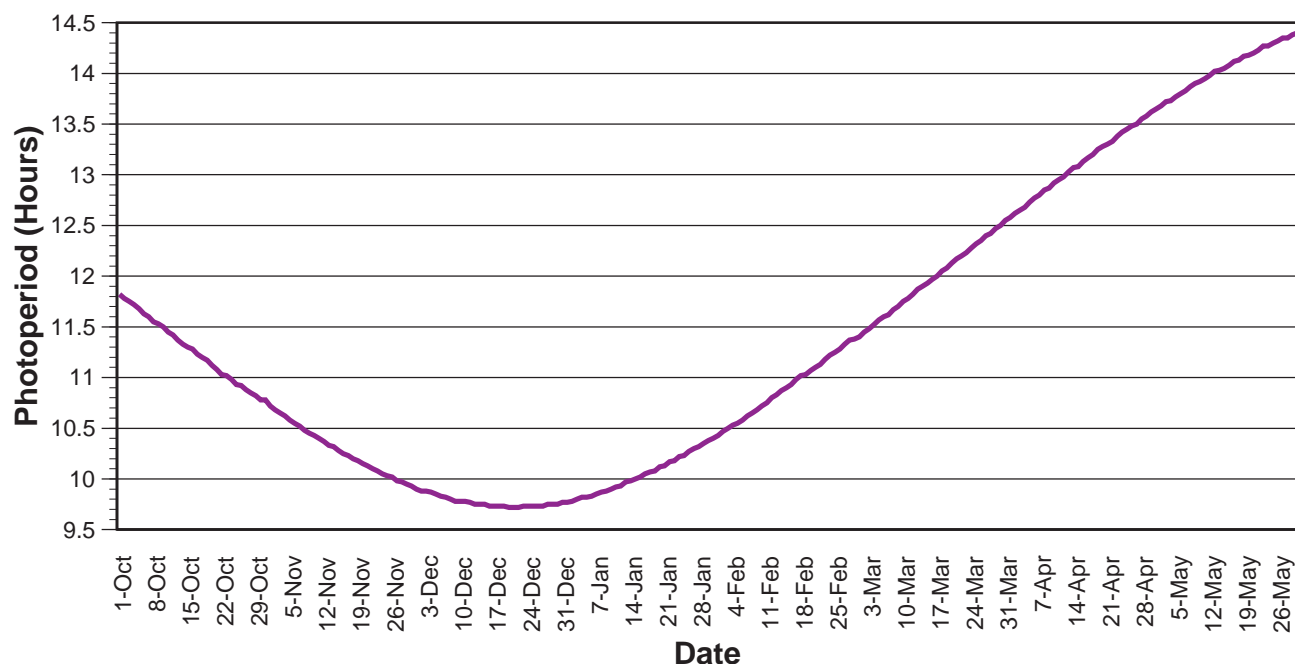


Figure 3. Photoperiod (sunrise to sunset) for Raleigh, N.C. from October 1 to May 31.

evaluated for plant size, flower number, flower size, and attractiveness of flowers (consistency between plants in an entry, whether flowers are borne upright and easily visible, and attractiveness of flower color). The rating scale used ranged from 1 (very poor) to 5 (excellent), with 0.5 unit increments; a 0 rating indicates all plants of the cultivar died. Weekly ratings were averaged (season average rating column in Table 2) to provide an overall rating for the entire season. In addition to a numeric value indicating plant performance, the number of plants flowering per cultivar was noted each week. If less than 50% of the plants representing a cultivar were flowering during a given week, a dash (“-”) appears after the weekly evaluation score in Table 3. The final column in Table 3 indicates how many weeks (out of a possible 22 weeks) more than 50% of the plants were in bloom.

Cultivars in Tables 2 and 3 are listed by species in descending order for overall seasonal average rating by flower type (clear and blotched) within each flower color (white, yellow, orange, rose, red, blue, purple, and mixes). A cultivar that received a seasonal average rating of 3.2 or above is

considered an excellent choice for full-season (November through April) color. A seasonal average rating of 2.6 or above indicates the cultivar is a satisfactory choice for full-season color. A seasonal rating below 2.6 indicates the cultivar may not be the best choice for our area.

Pansies are divided into pure-color flowers and multicolored flowers (see the color--type column in Table 2). Single-color flowering varieties are called “clear” whereas varieties having a distinct dark blue or black center on the flowers are called “blotched” or “faced” pansies. Some blotched pansies may have a different color blotch than the usual dark blue or black; if so, the blotch color will be noted in the comments column of Table 2. For example, 'Fama Love-me' has a brown blotch. Other multicolored pansies have white or light colored edges on their petals or have petals of differing colors. Most of these two or three color pansies also have a dark face. The two major colors of multicolored pansies are indicated in Table 2 by a slash between the two colors listed in the color--type column. 'Rally Lilac Cap' is a blotched pansy that is multicolored. Blue and white are the major petal colors outside of the blotched center.

## Sources of Seeds

**W**e are indebted to the following companies for supporting our 1996–97 winter trials. The companies are acknowledged in the ratings tables by the abbreviation that appears to the left of the company name:

- **BALL** Ball Seed Co., P.O. Box 335, West Chicago, IL 60185
- **BEN** Ernst Benary of America, Inc. 1444 Larson Street, Sycamore, IL 60178
- **BG** Bodger Seeds Ltd., 1800 North Tyler Avenue, Lompoc, CA 91733-3618
- **GOLD** Goldsmith Seeds, Inc., P.O. Box 1349, Gilroy, CA 95020
- **SAK** Sakata Seed America, Inc., P.O. Box 158, Wrens, GA 30833
- **S&G** S&G Seeds, 5300 Katrine Avenue, Downers Grove, IL 60515

Appreciation is also expressed to **Fafard, Inc.**, P.O. Box 26, Anderson, SC 29622; and to the **North Carolina Commercial Flower Growers' Association** for their donations to and support of the 1996–1997 winter annual trial garden.

## N.C. State Leaders of the Pack

**T**he following were selected in 1997 on their ability to display attractive landscape color throughout the majority of the winter and spring season. At any one time, other entries may have made a better short-term showing, but the “Leaders of the Pack” were selected for consistent, dependable full-season performance as a source of color and beauty in the landscape. The cultivar source is shown in parenthesis.

### Pansies:

- White--Blotch:** 'Rally White Blotch Improved' (BALL), 'Skyline White' (S&G), 'Fama Dark-Eyed White' (BEN), 'Accord/Banner White Blotch' (GOLD)
- Yellow--Clear:** 'Baby Bingo Yellow' (BALL), 'Clear Sky Primrose' (S&G), 'Accord/Banner Clear Primrose' (GOLD)
- Yellow--Blotch:** 'Fama Dark-Eyed Lemon' (BEN), 'Delta Primrose w/ Blotch' (S&G), 'Skyline Yellow' (S&G), 'Universal Plus Yellow Blotch' (GOLD), 'Rally Yellow w/ Blotch' (GOLD), 'Rally Yellow w/ Blotch' (BALL), 'Happy Face Yellow' (BG), 'Majestic Giants Yellow w/ Blotch' (SAK)
- Rose--Blotch:** 'Accord/Banner Rose Blotch' (GOLD), 'Majestic Giants Rose Shades' (SAK)
- Red--Clear:** 'Delta Pure Red' (S&G)
- Red--Blotch:** 'Accord/Banner Red Blotch' (GOLD), 'Skyline Red' (S&G)
- Red / Yellow:** 'Accord/Banner Red Wing' (GOLD)
- Blue--Clear:** 'Baby Bingo Denim' (BALL), 'Rally True Blue' (BALL), 'Fama Silver Blue' (BEN), 'Accord/Banner Clear Blue' (GOLD), 'Clear Sky True Blue' (S&G), 'Atlas Blue Splash' (BG)
- Blue--Blotch:** 'Rally Light Blue w/ Blotch' (BALL), 'Rally Deep Blue w/ Blotch' (BALL), 'Bingo Blue w/ Blotch' (BALL), 'Happy Face Blue' (BG), 'Delta Blue w/ Blotch' (S&G), 'Accord/Banner Blue Blotch' (GOLD), 'Super Majestic Giants Ocean' (SAK), 'Super Majestic Giants Blue Cap' (SAK), 'Majestic Giants Blue Shades' (SAK)

- Purple--Clear:** 'Baby Bingo Midnight' (BALL), 'Fama Purple' (BEN), 'Universal Plus Lavender' (GOLD), 'Ultima Lavender Shades' (SAK)
- Purple--Blotch:** 'Rally Lilac Cap' (BALL)
- Purple / White:** 'Baby Bingo Beaconsfield' (BALL)
- Violas:** 'Penny Violet Flare' (GOLD), 'Penny Azure Wing' (GOLD), 'Penny Primrose' (GOLD), 'Penny Violet Beacon' (GOLD)

## NCSU Exceptional Performance Winners

Each year, the best of the best, those cultivars that exemplify outstanding performance during the trials, will be recognized as Exceptional Performance award winners. The winners are judged on full-season performance and are recommended as outstanding selections for our region. Growers, retailers and landscapers are encouraged to consider these cultivars first for their winter and spring color needs. Only two cultivars were selected from 118 entries in the 1996–1997 winter trial:

1. *Viola*, 'Penny Violet Flare' (GOLD)
2. *Viola*, 'Penny Azure Wing' (GOLD)

## Series Ratings and Cultivar Performance

The season average ratings for the pansy and viola series that had at least three entries are listed to the right in descending order of average performance.

Baby Bingo was the top performing pansy series in the 1996 / 1997 winter trials while the viola series Penny outperformed all pansy series. There was very little difference among the remainder of the pansy series with respect to seasonal average. However, there was distinct differences in number of weeks with 50% or more of the plants in flower (total of 22 weeks). Since full season flowering is such an important landscape performance feature,

Series average ratings for the 1996 / 1997 winter trials.

Series	Number trialed	Source	Avg. rating	No. wks with 50% plants in bloom
<b>Pansy</b>				
Accord/Banner	18	GOLD	3.0	18
Atlas	6	BG	3.0	14
Baby Bingo	4	BALL	3.4	20
Bingo	8	BALL	3.0	18
Clear Sky	4	S&G	3.1	18
Delta	10	S&G	3.0	19
Fama	17	BEN	3.0	17
Happy Face	6	BG	3.1	16
Majestic Giants	8	SAK	3.1	14
Rally	10	BALL	3.1	16
Skyline	4	S&G	3.1	18
Super Majestic Giants	6	SAK	3.1	10
Universal Plus	12	GOLD	3.0	17
<b>Viola</b>				
Penny	4	GOLD	3.6	22

we have summarized average number of weeks with 50% or more of the plants in flower by flower color and type on page 6. Rose cultivars seemed to flower longer than other colors. Purple cultivars also flowered for a long period of time. There appears to be little difference between red, yellow, and white cultivars. However, orange cultivars were the least floriferous in the trials. Within a given color, there appears to be little difference between clear and blotched flowers with the exception of reds, where clear

cultivars flowered longer than blotched cultivars. This information may be useful to landscapers seeking to select color schemes that maintain color throughout the winter bedding plant season.

The number of pansies continues to increase each year, and the quality appears to improve as well. However, there is still a need for contrasting plant materials during our cool season in the Southeast. Hopefully other companion plants will be discovered in the future. Violas seem to hold up better during our winters and we hope companies will continue to submit viola entries along with pansies.



**Seasonal average rating and number of weeks where 50% of the plants representing each cultivar was in bloom (total of 22 weeks in the trial) for each color-type combination.**

Color--Type	No. of cultivars	Avg. rating	No. of wks in bloom
White--all	15	3.0	16
White--clear	6	2.8	17
White--blotch	9	3.1	15
Yellow--all	26	3.1	16
Yellow--clear	12	3.1	17
Yellow--blotch	14	3.1	16
Orange--all	7	2.9	14
Orange--clear	5	2.9	15
Orange--blotch	2	3.0	11
Rose--all	9	3.0	19
Rose--clear	3	2.9	20
Rose--blotch	6	3.1	18
Red--all	14	3.0	16
Red--clear	4	3.1	19
Red--blotch	10	3.0	14
Blue--all	19	3.2	17
Blue--clear	7	3.3	18
Blue--blotch	12	3.2	16
Purple--all	16	3.1	18
Purple--clear	8	3.1	18
Purple--blotch	8	3.1	18

*Visit the NCSU Floriculture Home Page at:*

**<http://www2.ncsu.edu/floriculture/>**

- *Read up on the Southeast Greenhouse Conference and Trade Show*
- *Download the latest floriculture extension and research publications and software available from NCSU for free*
- *Visit the NCCFGA pages and download back issues of the Bulletin*
- *Download the latest entomology notes for greenhouse pest control*



**Table 2. Season average rating and comments for pansy (P) and viola (V) cultivars. Pansy cultivars are listed by season average rating for each flower color type (clear and blotched) within each flower color category (white, yellow, orange, rose, red, blue, etc.).**

Species:	Cultivar	Color--Type	Source	Season average rating	Comments
P	Fama Pure White	White--Clear	BEN	2.9	Best clear white pansy
P	Delta Pure White	White--Clear	S&G	2.8	
P	Rally Pure White	White--Clear	BALL	2.8	Small flowers compared to other white pansies in trial
P	Atlas White	White--Clear	BG	2.7	Large flowers compared to other white pansies
P	Universal Plus White	White--Clear	GOLD	2.7	
P	Accord/Banner Clear White	White--Clear	GOLD	2.6	
P	Rally White Blotch Improved	White--Blotch	BALL	3.3	Best blotched white pansy
P	Skyline White	White--Blotch	S&G	3.2	
P	Fama Dark-Eyed White	White--Blotch	BEN	3.2	
P	Accord/Banner White Blotch	White--Blotch	GOLD	3.2	
P	Super Majestic Giants Snow Improved	White--Blotch	SAK	3.1	Larger flowers and larger plants than other whites
P	Happy Face White	White--Blotch	BG	3.1	
P	Bingo White <sup>w/</sup> Blotch	White--Blotch	BALL	3.0	
P	Majestic Giants White <sup>w/</sup> Blotch	White--Blotch	SAK	3.0	Large flowers compared to other white pansies
P	Universal Plus Ivory/Rose Blotch	White--Blotch	GOLD	3.0	Small plants compared to other whites in trial
P	Baby Bingo Yellow	Yellow--Clear	BALL	3.3	Best clear yellow pansy; very many small flowers
P	Clear Sky Primrose	Yellow, light--Clear	S&G	3.2	
P	Accord/Banner Clear Primrose	Yellow, light--Clear	GOLD	3.2	
P	Atlas Primrose	Yellow, light--Clear	BG	3.1	Very light yellow flowers; almost cream colored
P	Delta Pure Yellow	Yellow--Clear	S&G	3.1	
P	Accord/Banner Clear Yellow	Yellow--Clear	GOLD	3.1	
P	Rally Yellow	Yellow--Clear	BALL	3.0	
P	Fama Primrose	Yellow, medium--Clear	BEN	3.0	Nice medium-yellow color
P	Bingo Yellow	Yellow--Clear	BALL	3.0	
P	Fama Golden Yellow	Yellow--Clear	BEN	3.0	
P	Clear Sky Yellow	Yellow--Clear	S&G	2.9	
P	Atlas Yellow	Yellow--Clear	BG	2.8	
P	Fama Dark-Eyed Lemon	Yellow--Blotch	BEN	3.3	Best blotched yellow pansy; very light yellow color
P	Delta Primrose <sup>w/</sup> Blotch	Yellow, light--Blotch	S&G	3.3	
P	Skyline Yellow	Yellow--Blotch	S&G	3.2	
P	Universal Plus Yellow Blotch	Yellow--Blotch	GOLD	3.2	
P	Rally Yellow <sup>w/</sup> Blotch	Yellow--Blotch	BALL	3.2	
P	Happy Face Yellow	Yellow--Blotch	BG	3.2	

*Table 2, Continued.*

Species:	Cultivar	Color--Type	Source	Season average rating	Comments
P	Majestic Giants Yellow <sup>w</sup> / Blotch	Yellow--Blotch	SAK	3.2	
P	Universal Plus Yellow/Red Blotch	Yellow--Blotch	GOLD	3.1	Blotch is red
P	Super Majestic Giants Canary	Yellow--Blotch	SAK	3.1	
P	Fama Dark-Eyed Yellow	Yellow--Blotch	BEN	3.1	
P	Bingo Yellow <sup>w</sup> / Blotch	Yellow--Blotch	BALL	3.0	
P	Accord/Banner Yellow <sup>w</sup> / Red Blotch	Yellow--Blotch	GOLD	3.0	Blotch is red
P	Delta Yellow <sup>w</sup> / Blotch	Yellow--Blotch	S&G	2.9	
P	Fama Love-Me	Yellow/Red--Blotch	BEN	2.7	Blotch is brown; upper petal is maroon; nice plant form
P	Atlas Orange	Orange--Clear	BG	3.1	Best clear orange pansy
P	Universal Plus Orange	Orange--Clear	GOLD	3.0	
P	Fama Orange	Orange--Clear	BEN	2.9	Brilliant orange color
P	Accord/Banner Clear Orange	Orange--Clear	GOLD	2.9	
P	Rally Orange	Orange--Clear	BALL	2.5	
P	Rally Orange <sup>w</sup> / Blotch	Orange--Blotch	BALL	3.0	Best blotched orange pansy
P	Universal Plus Orange Blotch	Orange--Blotch	GOLD	2.9	
P	Skyline Pink Shades	Pink--Blotch	S&G	2.8	
P	Accord/Banner Clear Rose	Rose--Clear	GOLD	2.9	Best clear rose pansy; excellent rose color
P	Universal Plus Rose	Rose--Clear	GOLD	2.9	Very light rose color
P	Delta Pure Rose	Rose--Clear	S&G	2.8	Brilliant rose color
P	Accord/Banner Rose Blotch	Rose--Blotch	GOLD	3.2	Best blotched rose pansy
P	Majestic Giants Rose Shades	Rose--Blotch	SAK	3.2	
P	Bingo Light Rose <sup>w</sup> / Blotch	Rose--Blotch	BALL	3.1	
P	Delta Rose <sup>w</sup> / Blotch	Rose--Blotch	S&G	3.0	
P	Happy Face Rose	Rose--Blotch	BG	3.0	
P	Universal Plus Rose Blotch	Rose--Blotch	GOLD	3.0	
P	Delta Pure Red	Red--Clear	S&G	3.2	Best clear red pansy
P	Accord/Banner Clear Red	Red--Clear	GOLD	3.1	
P	Clear Sky Red	Red--Clear	S&G	3.0	Plants somewhat nonuniform in flower color
P	Accord/Banner Red Blotch	Red--Blotch	GOLD	3.2	Best blotched red pansy
P	Skyline Red	Red--Blotch	S&G	3.2	
P	Majestic Giants Scarlet Shades	Red--Blotch	SAK	3.1	
P	Super Majestic Giants Flame	Red--Blotch	SAK	3.1	Interesting flower patterns, but nonuniform
P	Happy Face Red	Red--Blotch	BG	2.8	

*Table 2, Continued.*

Species:					
	<b>Cultivar</b>	<b>Color--Type</b>	<b>Source</b>	<b>Season average rating</b>	<b>Comments</b>
P	Fama Red	Red--Blotch	BEN	2.8	
P	Bingo Red <sup>w/</sup> Blotch	Red--Blotch	BALL	2.8	Nonuniform plant size within the row
P	Bingo Red & Yellow	Red/Yellow--Clear	BALL	3.0	
P	Accord/Banner Red Wing	Red/Yellow--Blotch	GOLD	3.4	Best red/yellow bicolor pansy; excellent plant shape
P	Universal Plus Red Wing	Red/Yellow--Blotch	GOLD	2.8	
P	Majestic Giants Red & Yellow Bicolor	Red/Yellow--Blotch	SAK	2.7	
P	Baby Bingo Denim	Blue--Clear	BALL	3.4	Best clear blue pansy; brilliant blue with purple shading
P	Rally True Blue	Blue--Clear	BALL	3.4	
P	Fama Silver Blue	Blue, light--Clear	BEN	3.4	
P	Accord/Banner Clear Blue	Blue--Clear	GOLD	3.2	
P	Clear Sky True Blue	Blue--Clear	S&G	3.2	
P	Atlas Blue Splash	Blue, light--Clear	BG	3.2	
P	Fama True Blue	Blue--Clear	BEN	3.1	
P	Rally Light Blue <sup>w/</sup> Blotch	Blue, light--Blotch	BALL	3.4	Best blotched blue pansy
P	Rally Deep Blue <sup>w/</sup> Blotch	Blue, dark--Blotch	BALL	3.3	
P	Bingo Blue <sup>w/</sup> Blotch	Blue--Blotch	BALL	3.3	Very large flowers compared to other blue pansies
P	Happy Face Blue	Blue--Blotch	BG	3.3	
P	Delta Blue <sup>w/</sup> Blotch	Blue--Blotch	S&G	3.2	
P	Accord/Banner Blue Blotch	Blue--Blotch	GOLD	3.2	
P	Super Majestic Giants Ocean	Blue--Blotch	SAK	3.2	
P	Super Majestic Giants Blue Cap	Blue/White--Blotch	SAK	3.2	Very large flowers compared to other blue pansies
P	Majestic Giants Blue Shades	Blue--Blotch	SAK	3.2	
P	Delta Light Blue <sup>w/</sup> Blotch	Blue, light--Blotch	S&G	3.1	Nice compact plant shape
P	Fama Blue Angel	Blue, light--Blotch	BEN	3.1	
P	Fama Dark-Eyed Blue	Blue--Blotch	BEN	2.8	
P	Baby Bingo Midnight	Purple--Clear	BALL	3.4	Best clear purple pansy
P	Fama Purple	Purple--Clear	BEN	3.3	
P	Universal Plus Lavender	Purple--Clear	GOLD	3.2	
P	Ultima Lavender Shades	Purple, light--Clear	SAK	3.2	
P	Atlas Purple	Purple--Clear	BG	3.1	
P	Bingo Deep Purple	Purple--Clear	BALL	3.1	
P	Fama Lilac Shades	Purple, light--Clear	BEN	3.0	
P	Delta Pure Violet	Purple--Clear	S&G	2.8	

Table 2, Continued.

Species:	Cultivar	Color--Type	Source	Season average rating	Comments
P	Rally Lilac Cap	Purple, light--Blotch	BALL	3.2	Best blotched purple pansy
P	Accord/Banner Violet <sup>w/</sup> Face	Purple--Blotch	GOLD	3.1	
P	Accord/Banner Violet Blotch	Purple--Blotch	GOLD	3.0	
P	Majestic Giants Purple	Purple--Blotch	SAK	3.0	
P	Happy Face Purple	Purple--Blotch	BG	3.0	
P	Super Majestic Giants Royal	Purple--Blotch	SAK	3.0	
P	Baby Bingo Beaconsfield	Purple/White--Blotch	BALL	3.4	Best purple/white bicolor pansy
P	Fama See-Me	Purple/White--Blotch	BEN	3.0	
P	Accord/Banner Clear Mix	Mix--Clear	GOLD	2.5	
P	Majestic Giants Mix	Mix--Blotch	SAK	3.0	
P	Universal Plus Blotch Mix	Mix--Blotch	GOLD	2.9	
P	Accord/Banner Blotch Mix	Mix--Blotch	GOLD	2.8	
P	Accord/Banner Mix	Mix--Both	GOLD	3.1	Best pansy mix
P	Fama Mix	Mix--Both	BEN	3.0	
P	Universal Plus Clear Mix	Mix--Both	GOLD	2.9	
V	Penny Violet Flare	Purple	GOLD	3.6	Best viola in trial
V	Penny Azure Wing	Blue	GOLD	3.6	
V	Penny Primrose	Yellow	GOLD	3.5	Flowers are much smaller than other Penny violas
V	Penny Violet Beacon	Purple/Yellow	GOLD	3.5	

*Table 3. Weekly ratings and degree of flowering ("-" after the rating indicates less than 50% of the plants were flowering) for pansy and viola cultivars. Cultivars are listed in the same order as in Table 2.*

Cultivar	Source	Weekly ratings (week of the year) and degree of flowering																				Wks in bloom		
		48	49	50	51	52	1	2	3	4	5	6	7	8	9	10	11	12	13	14	15		16	17
Fama Pure White	BEN	3	2.5	2.5-	2.5-	2.5-	3	3	3	3-	3	3	3	3	3	3	3	3	3	3	3	3	18	
Delta Pure White	S&G	3	3	3	3	3	3	3.1	3	3-	3-	3	3	3	2.5	2.5	2.5	2.5	2.5	2.5	2.5	2.5	2.6	20
Rally Pure White	BALL	2.5	2.5	2.5	2.5	2.5	2.5	3	3	2.5	2.5	2.5	2.5	2.5	2.5	2.5	3	3	3	3	3	3.5	3.5	22
Atlas White	BG	3-	3-	3	2.5	2.5	2.5	2.5	3	3-	2.5-	2.5-	2.5-	2.5-	2.5	3	3	3	3	3	2.5	2.5	2.4	15
Universal Plus White	GOLD	2.5-	2.5	2.5	2.5	2.5	2.5	2.5	3-	2.5-	2.5-	2.5-	2.5-	2.5-	2.5	3	3	3	3	3	3	3	3	15
Accord/Banner Clear White	GOLD	3	3-	3-	3	3	3	2.5	2.5	2.5-	2.5-	2.5-	2.5-	2.5-	2.5	2.5	2.5	2.5	2.5	2.5	2.5	2.5	2.5	14
Rally White Blotch Improved	BALL	3	3	3	3	3	3	3	3	3-	3-	3	3	3	3	3.5	3.5	3.5	4	4	4	4	3.5	20
Skyline White	S&G	3-	3-	3-	3-	3-	3	3	3	3-	3	3	3	3	3	3.5	3.5	3.5	3.5	3.5	4	4	3.5	16
Fama Dark-Eyed White	BEN	3-	3-	3-	3-	3	3	3-	3	3-	3-	3-	3	3	3.5	3.5	3.5	3.5	3.5	3.5	3.5	4	3.5	13
Accord/Banner White Blotch	GOLD	3	3	3	3	3	3	3	3	3-	3-	3	3	3	3	3.5	3.5	3.5	3.5	3.5	3.5	4	3.5	20
Super Majestic Giants Snow Improved	SAK	3-	3-	3-	3-	3-	3-	3-	3-	3-	3-	3-	3-	3	3.5	3.5	3.5	3	3	3.5	3	3	9	
Happy Face White	BG	3-	3-	3-	3-	3-	3	3	3	3-	3-	3-	3	3-	3-	3	3.5	3	3	3	3.5	3.5	11	
Bingo White w/ Blotch	BALL	3	3	3	3	3	3	3	3-	3-	2.5-	2.5-	3	3	3	3	3	3	4	3.5	3.5	3	18	
Majestic Giants White w/ Blotch	SAK	3-	3-	3-	3-	3-	3	3	3	3-	3-	3-	3-	3-	3	3	3	3	3	3	3.5	3.5	11	
Universal Plus Ivory/Rose Blotch	GOLD	3	3	3	3	3	3	3	3	3-	3-	2.5-	2.5-	2.5-	2.5	3	3	3	3	3.5	3.5	3.5	17	
Baby Bingo Yellow	BALL	3	3	3	3	3	3	3	3	3-	3	3	3	3	3	3.5	3.5	3.5	4	4	4	4	3.5	21
Clear Sky Primrose	S&G	3-	3-	3-	3-	3-	3	3	3	3-	3	3	3	3	3	3.5	3.5	3.5	3.5	4	4	3.5	16	
Accord/Banner Clear Primrose	GOLD	3	3	3	3	3	3	3	3	3-	3-	3	3	3	3	3.5	3.5	3.5	3.5	3.5	3.5	3	3.5	20
Atlas Primrose	BG	3	3	3	3	3	3	3	3	3-	3-	3	3	3	3-	3	3	3	3.5	4	4	3.5	18	
Delta Pure Yellow	S&G	3-	3-	3-	3-	3-	3	3	3	3-	3	3	3	3	2.5	3	3	3.5	3.5	3.5	3.5	3.5	16	
Accord/Banner Clear Yellow	GOLD	3	3	3	3	3	3	3	3	3	3	3	3	3	3	3	3	3	3.5	3.5	3.5	3.5	22	
Rally Yellow	BALL	2.5	3-	3-	3-	3-	3-	3-	3-	3-	3-	3	3	3	2.5	3	3	3	3.5	3.5	3.5	3.5	13	
Fama Primrose	BEN	3-	3-	3-	3-	3-	3	3	3	3-	3	3	3	3	3	3	3	3	3	3.5	3.5	3	16	
Bingo Yellow	BALL	3-	3-	3-	3-	3-	3	3	3-	3-	3-	3	3	2.5	2.5	3	3	3	3	3	3.5	3.5	14	
Fama Golden Yellow	BEN	3-	3-	3	3	3	3	3	3-	3-	3-	3	3	3	2.5	3-	3	3	3	3	3	3	16	
Clear Sky Yellow	S&G	3-	3-	3-	3-	3-	3	3	3	3-	3-	2.5	2.5-	2.5	2.5	3	3	3	3	3	3	3	14	
Atlas Yellow	BG	3-	3-	3	3	3	3	3	3-	3-	2.5-	2.5-	2.5-	2.5-	2.5-	2.5	2.5	3	3	3	3	3	12	
Fama Dark-Eyed Lemon	BEN	3-	3-	3-	3	3-	3	3	3	3-	3-	3-	3-	3	3	3.5	3.5	3.5	4	4	4	4	3.5	14

Week	48	49	50	51	52	1	2	3	4	5	6	7	8	9
Date	27 Nov.	4 Dec.	11 Dec.	18 Dec.	26 Dec.	2 Jan.	8 Jan.	15 Jan.	22 Jan.	29 Jan.	5 Feb.	12 Feb.	19 Feb.	26 Feb.

Week	10	11	12	13	14	15	16	17
Date	5 Mar.	12 Mar.	19 Mar.	26 Mar.	2 Apr.	9 Apr.	16 Apr.	23 Apr.

Table 3, Continued.

Cultivar	Source	Weekly ratings (week of the year) and degree of flowering																	Wks in bloom						
		48	49	50	51	52	1	2	3	4	5	6	7	8	9	10	11	12		13	14	15	16	17	
Delta Primrose w/ Blotch	S&G	3	3-	3-	3-	3-	3	3	3	3-	3-	3	3	3	3.5	3.5	3.5	3.5	3.5	4	4	4	4	16	
Skyline Yellow	S&G	3-	3-	3-	3	3	3	3	3	3	3	3	3.5	3.5	3.5	3.5	3.5	3.5	3.5	3.5	3.5	3.5	3	19	
Universal Plus Yellow Blotch	GOLD	3-	3-	3-	3	3	3	3	3	3	3	3	3.5	3.5	3.5	3.5	3.5	3.5	3.5	3.5	3.5	3.5	3	19	
Rally Yellow w/ Blotch	BALL	2.5-	3-	3-	3-	3-	3	3	3	3-	3	3	3	3	3	3	3.5	4	4	4	4	4	3.5	16	
Happy Face Yellow	BG	3-	3-	3-	3-	3	3	3	3	3-	3-	3-	3	3	3	3.5	3.5	3.5	3.5	3.5	3.5	3.5	3.5	15	
Majestic Giants Yellow w/ Blotch	SAK	3-	3-	3-	3	3	3	3	3	3-	3-	3	3-	3	3	3.5	3.5	3.5	3.5	3	3.5	3.5	3.5	16	
Universal Plus Yellow/Red Blotch	GOLD	3-	3-	3-	3-	3	3	3	3	3-	2.5	2.5	2.5	2.5	2.5	3	3.5	3.5	3.5	4	4	4	4	17	
Super Majestic Giants Canary	SAK	3-	3-	3-	3-	3-	3	3	3-	3-	3-	3	3	3	3	3.5-	3-	3	3	3.5	3.5	3.5	3.5	12	
Fama Dark-Eyed Yellow	BEN	3-	3-	3-	3	3	3	3	3	3-	3-	3	3	3	3	3	3	3	3	3.5	3.5	3.5	3.5	17	
Bingo Yellow w/ Blotch	BALL	3-	3-	3	3-	3-	3	3	3	3-	2.5-	2.5-	2.5-	2.5	2.5	3	3	3	3	3.5	3.5	3.5	3.5	14	
Accord/Banner Yellow w/ Red Blotch	GOLD	3	3	3	3	3	3	2.5	2.5	3-	3-	3	3	3	3	3	3	3	3	3	3	3	3	20	
Delta Yellow w/ Blotch	S&G	3	3	3	3	3	3	3	3	3-	2.5-	2.5	2.5	2.5	3	3	3	3	3	3	3	3	3	20	
Fama Love-Me	BEN	2.5-	2.5-	2.5-	2.5-	2.5-	2.5	2.5-	2.5-	2.5-	2.5	2.5	2.5	2.5	2.5	2.5	2.5	2.5	3	3	3.5	3.5	3.5	14	
Atlas Orange	BG	3-	3-	3-	3-	3-	3	3-	3-	3-	3-	3-	3-	3	3	3	3.5	3.5	3.5	3.5	3.5	3.5	3	11	
Universal Plus Orange	GOLD	3-	3-	3-	3	3	3	3	3	3-	3	3	3	3	3	3	3	3	3	3	3	3	3	18	
Fama Orange	BEN	3	3	3	3	3	3	3	3	3-	3-	2.5-	2.5-	2.5	2.5	3	3	3	3	3	3	3	3	18	
Accord/Banner Clear Orange	GOLD	3-	3-	3	3	3	2.5	2.5	2.5	3-	3	3	2.5	2.5	3	3	3	3	3	3	3	3	3	19	
Rally Orange	BALL	3-	3-	2.5-	2.5-	2.5-	2.5-	2.5-	2.5-	2.5-	2.5-	2.5-	2.5	2.5	2.5	2.5	2.5	2.5	2.5	2.5	2.5	2.5	2.5	10	
Rally Orange w/ Blotch	BALL	3-	3-	3-	3-	3-	3-	3-	3-	3-	3-	3-	3-	3	3	3	3	3	3	3	3	3	3	9	
Universal Plus Orange Blotch	GOLD	3-	3-	3-	3-	3-	3-	3-	3-	3-	3	2.5	2.5	2.5	2.5	3	3	3	3	3	3	3	3	13	
Skyline Pink Shades	S&G	3	2.5	2.5	2.5	2.5	2.5	2.5	2.5	2.5	2.5	2.5	2.5	2.5	3	3	3	3	3	3	3	3.5	3.5	21	
Accord/Banner Clear Rose	GOLD	3	3-	3-	3	3	3	3	3	3-	3	2.5	2.5	2.5	2.5	3	3	3	3	3	3	3	3.5	19	
Universal Plus Rose	GOLD	3	3	3	3	3	3	3	3	3	2.5	2.5	2.5	2.5	2.5	2.5	3	3	3	3	3	3.5	3.5	22	
Delta Pure Rose	S&G	3-	2.5	2.5	2.5	2.5	2.5	2.5	2.5	2.5	2.5	2.5	2.5	2.5	2.5	3	3	3	3	3.5	3.5	4	4	20	
Accord/Banner Rose Blotch	GOLD	3	3	3	3	3	3	3	3-	3-	3	3-	3-	3	3	3	3	3	3.5	3.5	3.5	3.5	4	18	
Majestic Giants Rose Shades	SAK	3-	3-	3-	3-	3-	3-	3-	3-	3-	3-	3-	3-	3	3	3.5	3.5	3.5	3.5	3	3	3.5	4	10	
Bingo Light Rose w/ Blotch	BALL	3	3	3	3	3	3	3	3	3-	3	3	3	3	3	3	3	3	3	3	3	3	3.5	4	21
Delta Rose w/ Blotch	S&G	3	3	3	3	3	3	3	3	3-	3	3	3	3	3	3	3	3	3	3	3	3	3.5	3.5	21

Week	48	49	50	51	52	1	2	3	4	5	6	7	8	9
Date	27 Nov.	4 Dec.	11 Dec.	18 Dec.	26 Dec.	2 Jan.	8 Jan.	15 Jan.	22 Jan.	29 Jan.	5 Feb.	12 Feb.	19 Feb.	26 Feb.

Week	10	11	12	13	14	15	16	17
Date	5 Mar.	12 Mar.	19 Mar.	26 Mar.	2 Apr.	9 Apr.	16 Apr.	23 Apr.

Table 3, Continued.

Cultivar	Source	Weekly ratings (week of the year) and degree of flowering																	Wks in bloom					
		48	49	50	51	52	1	2	3	4	5	6	7	8	9	10	11	12		13	14	15	16	17
Happy Face Rose	BG	3	3	3	3	3	3	3	3	3-	3	3	3	3	3	3	3	3	3	3	3	3	4	21
Universal Plus Rose Blotch	GOLD	2.5-	2.5-	3-	3	3	2.5	2.5	2.5	3-	3	3	3	3	3	3	3.5	3.5	3.5	3.5	3.5	3.5	3.5	18
Delta Pure Red	S&G	3	3	3	3	3	3	3	3	3-	3	3	3	3	3	3.5	3.5	3.5	3.5	3.5	3.5	3.5	4	21
Accord/Banner Clear Red	GOLD	3-	3-	3-	3-	3	3	3	3	3-	2.5	2.5	2.5	2.5	3	3	3.5	3.5	3.5	3.5	3.5	3.5	3.5	17
Clear Sky Red	S&G	3	3	3	3	3	3	3	3	3-	2.5	2.5	2.5	2.5	3	3.5	3	3	3.5	3	3	3.5	21	
Accord/Banner Red Blotch	GOLD	3	3	3	3	3	3	3	3	3-	3-	3	3	3	3	3.5	3.5	3.5	3.5	3.5	3.5	3.5	3.5	20
Skyline Red	S&G	3-	3-	3-	3-	3-	3-	3	3	3-	3	3	3	3	3.5	3.5	4	4	3.5	3	3	3	15	
Majestic Giants Scarlet Shades	SAK	3-	3-	3-	3-	3-	3-	3	3	3-	3-	3-	3-	3	3	3-	3	3	3.5	3.5	3.5	3.5	3.5	11
Super Majestic Giants Flame	SAK	3-	3-	2.5-	3-	3-	3-	3-	3-	3-	3-	3-	3-	3-	3.5-	3.5	3.5	3.5	3.5	3	3	3	7	
Happy Face Red	BG	3-	3-	3-	3	3	3	3	3	3-	3-	2.5-	2.5-	2.5	2.5	2.5	2.5	2.5	3	3	3	3	15	
Fama Red	BEN	3	3	3	3	3	3	3	3	3-	3	2.5	2.5	2.5	2.5	2.5	2.5	2.5	3	3	2.5	3	21	
Bingo Red <sup>w/</sup> Blotch	BALL	3	3	3	3-	3	3	3	3	3-	2.5-	2.5-	2.5-	2.5	2.5	2.5-	2.5	2.5	3	3	2.5	3	16	
Bingo Red & Yellow	BALL	3	3	3	3	3	3	3	3-	3-	3-	2.5-	2.5-	2.5	2.5	3	3	3	3	3.5	3.5	3.5	4	17
Accord/Banner Red Wing	GOLD	3-	3-	3-	3-	3-	3	3	3	3	3	3.5	3.5	3	3	3.5	3.5	4	4	4	4	4	10	
Universal Plus Red Wing	GOLD	3-	2.5-	2.5-	2.5-	2.5-	2.5	2.5	2.5	2.5-	2.5-	2.5-	2.5-	2.5	2.5-	3	3	3	3.5	3.5	3.5	3.5	3.5	11
Majestic Giants Red & Yellow Bicolor	SAK	3-	2.5-	2.5-	2.5-	2.5-	2.5-	2.49	2.5-	2.5-	2.5-	2.5-	2.5-	2.5	2.5	3	3	3	3	3	3	3	3.5	17
Baby Bingo Denim	BALL	3	3	3	3	3	3	3	3	3-	3	3	3	3	3	3.5	4	4	4.5	4.5	4.5	4.5	3.5	21
Rally True Blue	BALL	3-	3-	3-	3-	3-	3	3	3	3-	3-	3	3	3	3	3.5	3.5	4	4	4.5	4.5	4.5	4	15
Fama Silver Blue	BEN	3-	3-	3-	3-	3	3	3	3	3-	3	3	3	3	3	3	3.5	4	4.5	4.5	4.5	4	4	17
Accord/Banner Clear Blue	GOLD	3-	3-	3-	3-	3-	3	3	3	3-	3	3	3	3	3	3	3	3.5	4	3.5	4	4	4	15
Clear Sky True Blue	S&G	3-	3-	3	3	3	3	3	3	3-	3	3	3	3	3	3	3	3.5	3.5	3.5	4	4	4	19
Atlas Blue Splash	BG	3-	3-	3-	3-	3-	3	3	3	3-	3	3	3	3	3	3	3	3.5	3.5	4	4	4	3.5	16
Fama True Blue	BEN	3	3	3	3	3	3	3	3	3-	3	3	3	3	3	3-	3	3	3	3	3.5	3.5	4	20
Rally Light Blue <sup>w/</sup> Blotch	BALL	3	3	3	3	3	3	3	3-	3-	3	3	3	3	3	3.5	4	4	4.5	4.5	4.5	4.5	3.5	20
Rally Deep Blue <sup>w/</sup> Blotch	BALL	3-	3-	3-	3-	3-	3	3	3	3-	3	3.5	3.5	3.5	3.5	4	4	4	4	3.5	3.5	3	3	16
Bingo Blue <sup>w/</sup> Blotch	BALL	3	3	3	3	3	3	3	3	3-	3	3	3	3	3.5	3	3.5	3.5	3.5	4	4	4	4	21
Happy Face Blue	BG	3-	3-	3	3	3-	3	3	3	3-	3-	3.5	3.5	3.5	3.5	3.5	4	4	3.5	3.5	3	3	3.5	17
Delta Blue <sup>w/</sup> Blotch	S&G	3	3	3	3	3-	3	3	3	3-	3	3	3	3	3	3.5	3.5	3.5	3.5	3	3.5	4	4	20

Week	48	49	50	51	52	1	2	3	4	5	6	7	8	9
Date	27 Nov.	4 Dec.	11 Dec.	18 Dec.	26 Dec.	2 Jan.	8 Jan.	15 Jan.	22 Jan.	29 Jan.	5 Feb.	12 Feb.	19 Feb.	26 Feb.

Week	10	11	12	13	14	15	16	17
Date	5 Mar.	12 Mar.	19 Mar.	26 Mar.	2 Apr.	9 Apr.	16 Apr.	23 Apr.

Table 3, Continued.

Cultivar	Source	Weekly ratings (week of the year) and degree of flowering																	Wks in bloom				
		48	49	50	51	52	1	2	3	4	5	6	7	8	9	10	11	12		13	14	15	16
Accord/Banner Blue Blotch	GOLD	3	3	3	3	3	3	3	3	3-	3	3	3	3	3	3.5	3.5	3.5	3.5	3.5	4	3.5	21
Super Majestic Giants Ocean	SAK	3-	3-	3-	3-	3-	3-	3-	3-	3-	3-	3-	3	3	3.5	4	4	4	3.5	3	3	3	11
Super Majestic Giants Blue Cap	SAK	3-	3-	3-	3-	3-	3-	3-	3-	3-	3-	3-	3	3	3.5	3.5	3.5	3.5	3.5	3.5	3.5	3.5	10
Majestic Giants Blue Shades	SAK	3-	3-	3-	3-	3-	3-	3-	3-	3-	3-	3-	3	3	3.5	3.5	4	4	3.5	3	3	3	10
Delta Light Blue w/ Blotch	S&G	3-	3-	3-	3	3	3	3	3	3-	3-	3	3	3	2.5	3	3	3	3	3.5	3.5	4	17
Fama Blue Angel	BEN	3-	3-	3-	3-	3-	3	3-	3-	3-	3	3	3	3	3	3	3	3	3	3.5	3.5	3.5	13
Fama Dark-Eyed Blue	BEN	3-	3-	2.5-	2.5-	2.5	2.5	2.5	2.5	2.5-	2.5	2.5	2.5	2.5	3	3	3	3	3	3	3.5	3.5	17
Baby Bingo Midnight	BALL	3-	3-	3-	3	3	3	3	3	3.5-	3.5	3.5	3.5	3.5	3.5	3.5	4	4	4	4	4	4	18
Fama Purple	BEN	3-	3-	3-	3	3	3	3	3	3-	3-	3	3	3	3.5	4	4	4	4	4	4	3.5	17
Universal Plus Lavender	GOLD	3-	3	3	3	3	3	3	3	3-	3	3	3	3	3	3.5	3.5	4	4	4	3.5	3	20
Ultima Lavender Shades	SAK	3-	3-	3-	3-	3	3	3	3	3-	3	3	3	3	3	3.5	3.5	3.5	4	4	3.5	3	17
Atlas Purple	BG	3-	3-	3-	3-	3-	3-	3-	3-	3-	3-	3-	3	3	3	3	3.5	3.5	3.5	3.5	3.5	3	10
Bingo Deep Purple	BALL	3	3	3	3	3	3	3	3	3-	3	3	3-	3	3	3	3	3	3	3.5	3.5	3.5	20
Fama Lilac Shades	BEN	3-	3-	3-	3	3	3	3	3	3-	3	3	3	3	3	3	3	3	3	3	3	3	18
Delta Pure Violet	S&G	3	2.5	2.5	2.5	2.5	2.5	2.5	2.5	2.5-	2.5	2.5	3	3	3	3	3	3	3	3	3	3	22
Rally Lilac Cap	BALL	3	3	3	3	3	3	3	3	3-	3	3	3	3	3	3.5	3.5	3.5	3.5	3.5	3.5	3.5	21
Accord/Banner Violet w/ Face	GOLD	3	3	3	3	3	3-	3	3	3-	3	3	3	3	3	3	3	3	3.5	4	3.5	3.5	20
Accord/Banner Violet Blotch	GOLD	3	3	3	3	3	3	3	3	3-	3	3	3	3	3	3	3	3	3	3	3	3.5	21
Majestic Giants Purple	SAK	3-	3-	3	3	3	3	3	3	3-	3-	3	3	3	3-	3	3	3	3	3	3	3	17
Happy Face Purple	BG	3-	3-	3-	3-	3-	3	3	3	3-	3-	3	3-	3	3	3	3	3	3	3	3	3	15
Super Majestic Giants Royal	SAK	3-	3-	3-	3-	3-	3-	3-	3-	3-	3-	3-	3	3	3	3	3	3	3	3	3	3	10
Baby Bingo Beaconsfield	BALL	3-	3-	3	3	3	3	3	3	3-	3	3	3	3.5	3.5	4	4	4	4	4	4	4	19
Fama See-Me	BEN	3-	3-	2.5	2.5	3	3	3	3	3-	3-	3	3	3	3	3.5	3.5	3.5	3.5	3	3	3	18
Accord/Banner Clear Mix	GOLD	2.5	2.5	2.5	2.5-	2.5-	2.5	2.5	2.5-	2.5-	2.5-	2.5	2.5	2.5	2.5	2.5	2.5	2.5	2.5	3	2.5	2.5	17
Majestic Giants Mix	SAK	3-	3-	3-	3-	3-	3	3	3	3-	3	3	3	3	3	3	3	3	3.5	3.5	3	2.5	16
Universal Plus Blotch Mix	GOLD	3	3	3	3	3	3	3	3	3-	3	3	3	3	3	3	3	3	2.5	3	2.5	2.5	21
Accord/Banner Blotch Mix	GOLD	3	3	3	3	3	3	3	3	3-	3	2.5	2.5	2.5	2.5	2.5	2.5	3	3	3	3	2.5	21
Accord/Banner Mix	GOLD	3-	3-	3-	3	3	3.5	3.5	3.5	3.5-	3	3	3	3	3	3	3	3.5	3.5	3.5	3.5	2.5	18

Week	48	49	50	51	52	1	2	3	4	5	6	7	8	9
Date	27 Nov.	4 Dec.	11 Dec.	18 Dec.	26 Dec.	2 Jan.	8 Jan.	15 Jan.	22 Jan.	29 Jan.	5 Feb.	12 Feb.	19 Feb.	26 Feb.

Week	10	11	12	13	14	15	16	17
Date	5 Mar.	12 Mar.	19 Mar.	26 Mar.	2 Apr.	9 Apr.	16 Apr.	23 Apr.



Table 3, Continued.

Cultivar	Source	Weekly ratings (week of the year) and degree of flowering																				Wks in bloom		
		48	49	50	51	52	1	2	3	4	5	6	7	8	9	10	11	12	13	14	15		16	17
Fama Mix	BEN	3-	3-	3-	3-	3-	3	3	3-	3-	3	3	3	3	3	3	3	3.5	3.5	3.5	3	2.5	2.5	15
Universal Plus Clear Mix	GOLD	3-	3-	3-	3-	3	3	3	3	3-	3	2.5	2.5	3	3	3	3	3	3	3	3	2.5	2.5	17
Penny Violet Flare	GOLD	3	3	3	3	3	3.5	3.5	3.5	3.5	3.5	3.5	3.5	3.5	3.5	4	4	4	4	4	4	4.5	4.5	22
Penny Azure Wing	GOLD	3	3	3	3	3	3.5	3.5	3.5	3.5	3.5	3.5	3.5	3.5	3.5	4	4	4	4	4	4	4	4	22
Penny Primrose	GOLD	3	3	3	3	3	3.5	3.5	3.5	3.5	3.5	3.5	3.5	3.5	3.5	4	4	4	4	4	4	3.5	3.5	22
Penny Violet Beacon	GOLD	3	3	3	3	3	3.5	3.5	3.5	3.5	3.5	3.5	3.5	3.5	3.5	4	4	4	4	4	4	3.5	3.5	22

Week	48	49	50	51	52	1	2	3	4	5	6	7	8	9
Date	27 Nov.	4 Dec.	11 Dec.	18 Dec.	26 Dec.	2 Jan.	8 Jan.	15 Jan.	22 Jan.	29 Jan.	5 Feb.	12 Feb.	19 Feb.	26 Feb.
Week	10	11	12	13	14	15	16	17						
Date	5 Mar.	12 Mar.	19 Mar.	26 Mar.	2 Apr.	9 Apr.	16 Apr.	23 Apr.						