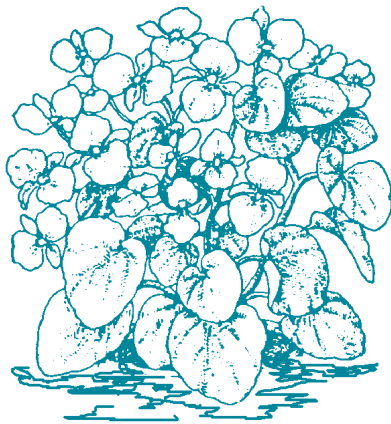


1995
NORTH CAROLINA STATE UNIVERSITY
WINTER ANNUALS EVALUATION

by
Douglas A. Bailey
Floriculture Research and Extension
with technical assistance from
Bernadette Clark



Department of Horticultural Science
North Carolina State University
Raleigh, North Carolina
Horticultural Research Series No. 116

Table of Contents

| | Page |
|---|------|
| Introduction | 1 |
| Explanation of Cultivar Evaluations | 2 |
| Sources of Seeds | 4 |
| N.C. State Leaders of the Pack Recipients | 4 |
| NCSU Exceptional Performance Winners. | 5 |
| Series Ratings | 10 |

Introduction

Pansies have become the most popular annual for mid-autumn to late-spring color in the Southeast. Intensive breeding programs selecting for unique flower colors, large flower size, greater flower number, and temperature tolerance have led to many new and exciting cultivars to choose from for use in the landscape. With all the different cultivars available, selecting which ones to grow for customers (and which ones to plant in the landscape) can be a difficult task. During November 1994 through mid-May 1995, we evaluated 100 pansy selections plus 8 viola entries and recorded how well they performed in the North Carolina landscape. We also evaluated 15 dianthus cultivars planted in November and compared them to 12 cultivars planted last May. The trials also included 3 snapdragon and 3 English daisy entries; both species planted in November.

The trial gardens are located at the N.C. State Horticulture Field Laboratory, 4301 Beryl Road,

in Raleigh. The site is located on lat. 35°47'N, long. 78°42'W with an elevation of 400 ft. Transplants grown in 2.5" × 2.2" containers were planted in the trial garden on 2 November 1994 (except for the 12 dianthus entries planted in May 1994), and plant spacing was 10" × 12" (in-row × between-row spacing). Twelve plants of each entry were used to evaluate the performance of single-color cultivars, and 24 plants (two rows) were evaluated for each mix.

Temperatures in November and December were above normal (10% above average). January was slightly (4%) above normal; February was slightly (4%) below normal; March was above (6%) normal; April was normal; and May was slightly (3%) below normal (Table 1, Figure 1). This equates into a 2% deviation above the 30 year average temperature for the seven month period.

Precipitation was well below average (44% of normal) for November and December. It was well above normal (1.52% of normal) for January and

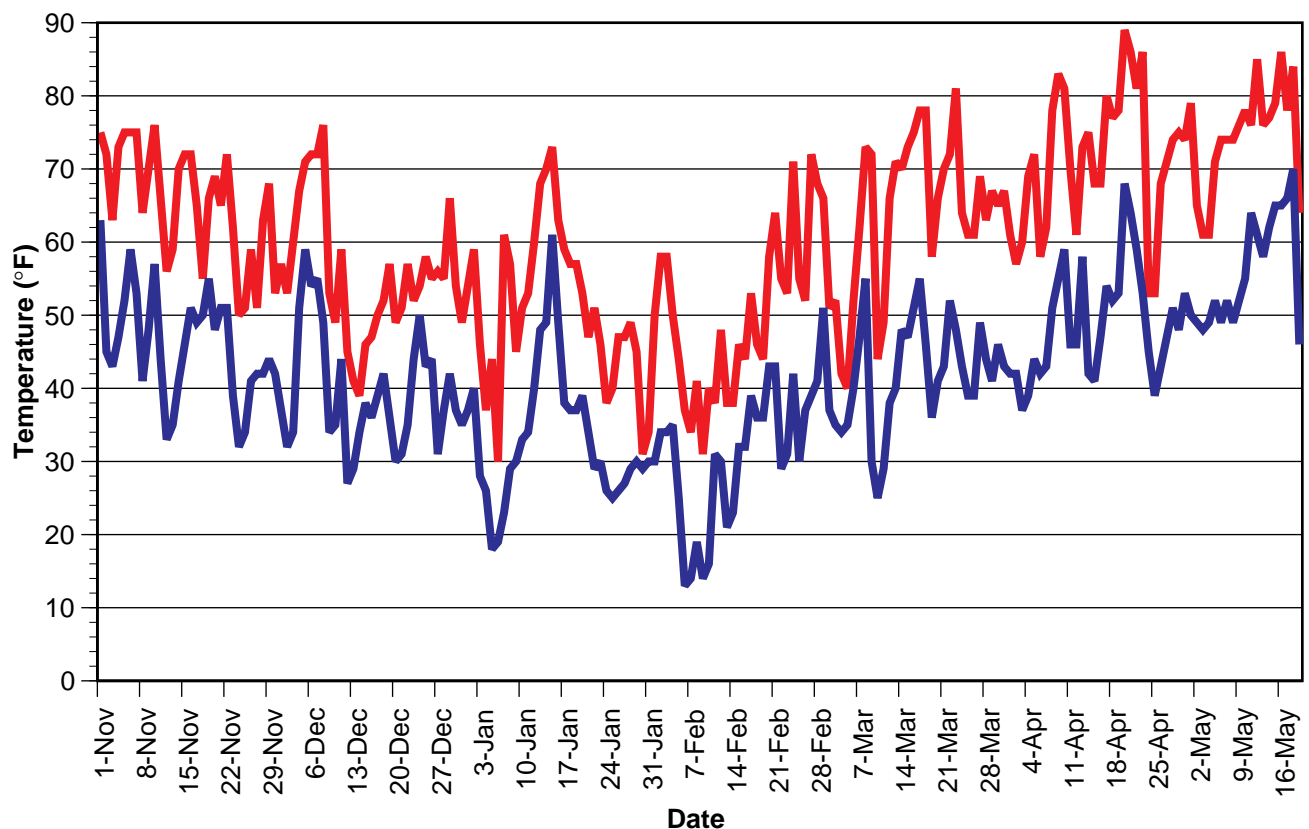


Figure 1. Daily minimum and maximum temperatures for Raleigh, North Carolina from 1 November 1994 to 19 May 1995.

February. The excessive rainfall during these two months did reduce flowering both in our trials and in commercial landscapes in the Raleigh area. Precipitation during March, April and May was below (55% of) average (Table 1, Figure 2). Overall, we received 80% of normal precipitation (21.01") for the seven month period.

The fertilization program for the plants consisted of a preplant incorporation of 17-17-17 and monthly broadcasts of 15.5-0-0 through March. No pesticide applications were made during the evaluation in order to document major pest problems, and no major pest or disease problems were noted throughout the trials.

Explanation of Cultivar Evaluations

Plants were given a visual rating by the same individual once a week for 24 weeks beginning 23 November 1994 (week 47 of 1994), three weeks after planting

through 3 May 1995 (week 18 of 1995). Entries were evaluated for plant size, flower number, flower size, and attractiveness of flowers (consistency between plants in an entry, whether flowers are borne upright and easily visible, and attractiveness of flower color). As the weather turned warmer, plants were evaluated for heat tolerance--did flower number decrease; did flower size decrease; and did flower stalks become "floppy", causing flowers to lay down rather than staying upright and easily visible? The rating scale used ranged from 1 (very

Table 1. Temperature and rainfall from 1 November 1994 to 19 May 1995 and 30 year temperature and rainfall averages for Raleigh, N.C.

| Month | 1994-95 average daily temperature (°F) | 30 year average daily temperature (°F) | 1994-95 monthly precipitation (inches) | 30 year average monthly precipitation (inches) |
|----------|--|--|--|--|
| November | 55.7 | 51.7 | 1.85 | 3.40 |
| December | 47.5 | 42.9 | 1.14 | 3.34 |
| January | 42.0 | 40.2 | 5.83 | 3.79 |
| February | 39.9 | 42.1 | 5.61 | 3.75 |
| March | 53.0 | 50.1 | 3.26 | 4.19 |
| April | 60.1 | 60.4 | 1.44 | 3.36 |
| May* | 65.8 | 68.1 | 1.95 | 4.44 |

*The May data is for 1 May to 19 May 1995.

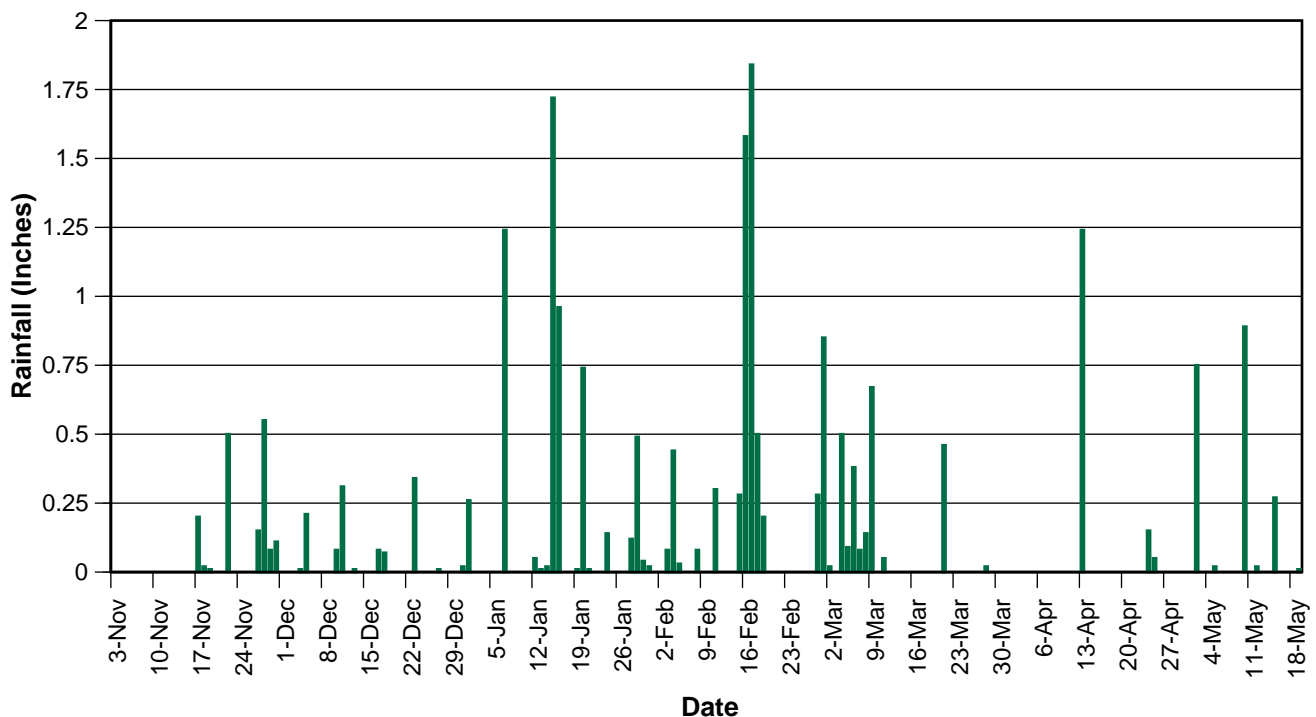


Figure 2. Precipitation received from 1 November 1994 to 19 May 1995.

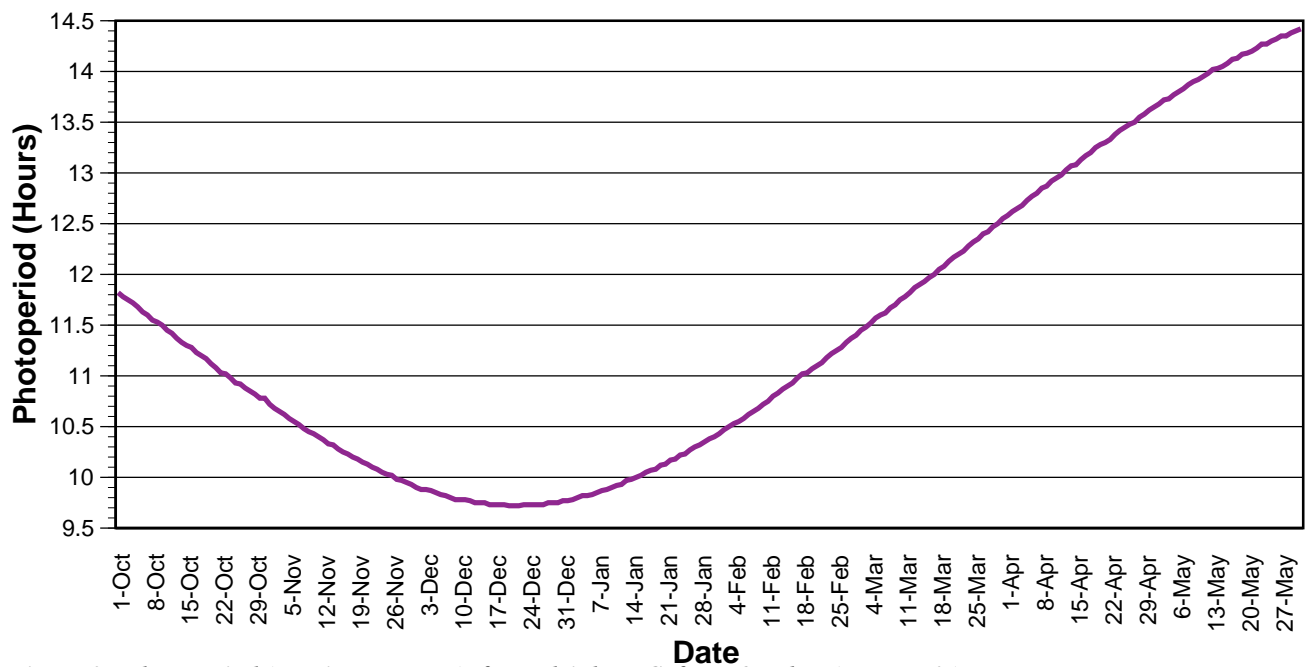


Figure 3. Photoperiod (sunrise to sunset) for Raleigh, N.C. from October 1 to May 31.

poor) to 5 (excellent), with 0.5 unit increments; a 0 rating indicates all plants of the cultivar died. Weekly ratings were averaged (season average rating column in Table 2) to provide an overall rating for the entire season. In addition to a numeric value indicating plant performance, the number of plants flowering per cultivar was noted each week. If less than 50% of the plants representing a cultivar were flowering during a given week, a dash (“-”) appears after the weekly evaluation score in Table 3. The final column in Table 3 indicates how many weeks (out of a possible 24 weeks) more than 50% of the plants were in bloom.

None of the English daisy or snapdragon cultivars bloomed for more than 5 weeks during the 24 weeks of the trial. Our results suggest that English daisy and snapdragons are not good choices for winter flowering annuals in this part of North Carolina. They should perform much better along the coast, where the winter temperatures are more moderate.

The dianthus averaged over 10 weeks of greater than 50% flowering during the 24 week evaluation period. The Parfait series had the shortest flowering period for dianthus in the trial. However, Parfaits have a later flowering season and continue to have attractive flowering well into June. The dianthus planted in May flowered longer during the fall than dianthus planted in November, but the overall

appearance of November-planted dianthus was superior to those planted in May.

Most pansy and viola cultivars had greater than 50% of the plants in flower for the entire 24 week evaluation period. 'Bingo Yellow,' 'Bingo Yellow w/Blotch,' 'Rally Orange w/Blotch,' 'Vernale Orange w/Blotch,' and 'Bingo Red w/Blotch' were the only pansy cultivars that had 50% or greater plants in bloom for less than 20 weeks during the trial. This is a great contrast to last year’s trials, when only seven of the 81 pansy and viola cultivars had 50% or greater plants in bloom for the full 25 weeks of the trial.

Cultivars in Tables 2 and 3 are listed by species in descending order for overall seasonal average rating by flower type (clear and blotched) within each flower color (white, yellow, orange, rose, red, blue, purple, and mixes). A cultivar that received a seasonal average rating of 3.2 or above is considered an excellent choice for full-season (November through May) color. A seasonal average rating of 2.6 or above indicates the cultivar is a satisfactory choice for full-season color. A seasonal rating below 2.6 indicates the cultivar may not be the best choice for our area.

Pansies are divided into pure-color flowers and multicolored flowers (see the color--type column in Table 2). Single-color flowering varieties are called “clear” whereas varieties having a distinct

dark blue or black center on the flowers are called “blotched” or “faced” pansies. Some blotched pansies may have a different color blotch than the usual dark blue or black; if so, the blotch color will be noted in the comments column of Table 2. For example, 'Fama Love Me' has a brown blotch. Other multicolored pansies have white or light colored edges on their petals or have petals of

differing colors. Most of these two or three color pansies also have a dark face. The two major colors of multicolored pansies are indicated in Table 2 by a slash between the two colors listed in the color--type column. 'Universal Plus Beaconsfield' is a blotched pansy that is multicolored. Blue and white are the major petal colors outside of the blotched center.

Sources of Seeds

We are indebted to the following companies for supporting our 1994–95 winter trials. The companies are acknowledged in the ratings tables by the abbreviation that appears to the left of the company name:

- **AAS** All America Selections, 1311 Butterfield Road, Suite 310, Downers Grove, IL 60515
- **BALL** Ball Seed Co., P.O. Box 335, West Chicago, IL 60185
- **BEN** Ernst Benary Seed Growers Ltd., P.O. Box 1127, D-3510 Hann. Münden 1, Germany
- **CSP** Clause Semences Professionnelles, 100 Breen Road, San Juan Bautista, CA 95045
- **ELI** Elidia Seed, Z.I. La Motte, BP 83, 26800 Portes lès Valence, France
- **FLS** Fleuroselect, Parallel Boulevard 214D, 2202 HT Noordwijk, The Netherlands
- **GOLD** Goldsmith Seeds, Inc., P.O. Box 1349, Gilroy, CA 95020
- **PA** Pan American Seed, P.O. Box 438, West Chicago, IL 60185
- **SG** S&G Seeds, 5300 Katrine Avenue, Downers Grove, IL 60515

Appreciation is also expressed to **Fafard, Inc.**, P.O. Box 26, Anderson, SC 29622; **North Carolina Commercial Flower Growers' Association**; and **Wetsel Seed Company, Inc.**, P.O. Box 791 N. Liberty St., Harrisonburg, VA 22801 for their donations to and support of the 1995 winter annual trial garden.

N.C. State Leaders of the Pack

The following were selected in 1995 on their ability to display attractive landscape color throughout the majority of the winter and spring season. At any one time, other entries may have made a better short-term showing, but the “Leaders of the Pack” were selected for consistent, dependable full-season performance as a source of color and beauty in the landscape. The cultivar source is shown in parenthesis.

Dianthus: 'Floral Lace Picotee' (BALL), 'Ideal Crimson' (ELI), 'Ideal Deep Violet' (ELI), 'Color Magician' (AAS)

Pansies:

White--Clear: 'Accord' (GOLD)

White--Blotch: 'Fama Dark-Eyed White' (BEN), 'Universal Plus White Blotch' (GOLD), 'Vernale White w/ Blotch' (ELI)

Pansies, Continued:

| | |
|------------------------------|---|
| Yellow--Clear: | 'Clear Sky Primrose' (S&G), 'Delta Pure Yellow' (S&G), 'Accord Clear Yellow' (GOLD), 'Universal Plus Yellow' (GOLD), 'Fama Golden Yellow' (BEN) |
| Yellow--Blotch: | 'Universal Plus Yellow Blotch' (GOLD), 'Skyline Yellow' (S&G), 'Rally Yellow w/ Blotch' (PA) |
| Orange--Clear: | 'Clear Sky Orange' (S&G), 'Fama Orange' (BEN) |
| Orange--Blotch: | 'Rally Orange w/ Blotch' (PA) |
| Rose--Clear: | 'Bingo Light Rose' (PA) |
| Rose--Blotch: | 'Universal Plus Rose Blotch' (GOLD) |
| Red--Clear: | 'Universal Plus Red' (GOLD) |
| Red--Blotch: | 'Skyline Red' (S&G) |
| Red/Yellow--Blotch: | 'Skyline Yellow Red Wing' (S&G) |
| Blue--Clear: | 'Experimental Denim Blue' (PA), 'Rally True Blue' (PA), 'Fama True Blue' (BEN), 'Accord Clear Blue' (GOLD), 'Universal Plus True Blue' (GOLD) |
| Blue--Blotch: | 'Rally Light Blue w/ Blotch' (PA), 'Delta Blue w/ Blotch' (S&G), 'Skyline Blue' (S&G), 'Fama Dark-Eyed Blue' (BEN) |
| Purple--Clear: | 'Rally Lilac Cap' (PA) |
| Purple--Blotch: | 'Fama See-Me' (BEN) |
| Purple/White--Blotch: | 'Experimental Beaconsfield' (PA), 'Universal Plus Beaconsfield' (GOLD), 'Skyline White/Purple Wing' (S&G) |
| Mix: | 'Accord Mix' (GOLD), 'Skyline Mix' (S&G), 'Delta Pure Colours Formula Mix' (S&G) |
| Violas: | 'Alpine Summer' (AAS), 'Jewel Purple w/ Face' (AAS), 'Velour Blue' (CSP) |

NCSU Exceptional Performance Winners

Each year, the best of the best, those cultivars that exemplify outstanding performance during the trials, will be recognized as Exceptional Performance award winners. The winners are judged on full-season performance and are recommended as outstanding selections for our region. Growers, retailers and landscapers are encouraged to consider these cultivars first for their winter and spring color needs. Only four cultivars were selected from 141 entries in the 1995 winter trial:

1. *Viola*, 'Alpine Summer' (AAS)
2. *Pansy*, 'Experimental Beaconsfield' (PA)
3. *Viola*, 'Jewel Purple w/ Face' (AAS)
4. *Pansy*, 'Rally Lilac Cap' (PA)



(Text continued on Page 10)

Table 2. Season average rating and comments for dianthus (D), English Daisy (E), pansy (P), snapdragon (S), and viola (V) cultivars. Dianthus are listed by flower color and pansy cultivars are listed by season average rating for each flower color type (clear and blotch) within each flower color category.

| Species: | Cultivar | Color--Type | Source | Season average rating | Comments |
|----------|------------------------|--------------|--------|-----------------------|--|
| | D Princess White | White | GOLD | 2.8 | Best white dianthus |
| | D Princess White† | White | GOLD | 2.0 | |
| | D Color Magician | White/Rose | AAS | 3.4 | Nice contrasting flower colors on same plant |
| | D Color Magician† | White/Rose | FLS | 3.1 | Nice contrasting flower colors on same plant |
| | D Floral Lace Picotee† | Red/White | BALL | 2.5 | |
| | D Floral Lace Picotee | Pink | BALL | 3.8 | Best dianthus in trial; best pink dianthus |
| | D Ideal Pink | Pink | ELI | 3.2 | |
| | D Princess Pink | Pink | GOLD | 3.2 | |
| | D Raspberry Parfait | Pink | GOLD | 3.1 | Few flowers; tends to bloom later than other cultivars |
| | D Floral Lace Rose | Pink | BALL | 3.1 | |
| | D Princess Salmon | Pink | GOLD | 2.6 | |
| | D Princess Salmon† | Pink | GOLD | 2.0 | |
| | D Floral Lace Rose† | Pink | BALL | 1.5 | |
| | D Princess Pink† | Pink | GOLD | 1.5 | |
| | D Ideal Crimson | Red | ELI | 3.7 | Best red dianthus; very upright growth habit |
| | D Princess Scarlet | Red | GOLD | 3.3 | |
| | D Strawberry Parfait | Red | GOLD | 2.9 | Few flowers; tends to bloom later than other cultivars |
| | D Princess Crimson | Red | GOLD | 2.9 | |
| | D Princess Scarlet† | Red | GOLD | 2.5 | |
| | D Princess Crimson† | Red | GOLD | 2.5 | |
| | D Raspberry Parfait† | Red | GOLD | 2.2 | Few flowers; tends to bloom later than other cultivars |
| | D Strawberry Parfait† | Red | GOLD | 1.7 | Few flowers; tends to bloom later than other cultivars |
| | D Ideal Deep Violet | Purple | ELI | 3.6 | Best purple dianthus; very upright growth habit |
| | D Floral Lace Purple | Purple | BALL | 3.3 | |
| | D Princess Purple | Purple | GOLD | 3.2 | |
| | D Floral Lace Purple† | Purple | BALL | 2.7 | |
| | D Princess Purple† | Purple | GOLD | 2.4 | |
| | E Habanera Rose | Rose | BEN | 1.9 | English Daisies do not appear suited for our climate |
| | E Habanera Red | Red | BEN | 1.9 | English Daisies do not appear suited for our climate |
| | E Habanera White | White | BEN | 1.9 | English Daisies do not appear suited for our climate |
| | P Accord Clear White | White--Clear | GOLD | 3.4 | Creamy white color; best clear white pansy |
| | P Vernale Pure White | White--Clear | ELI | 3.3 | Pure white color |
| | P Universal Plus White | White--Clear | GOLD | 3.3 | Creamy white color |

†These dianthus were planted in May 1994 and compared to dianthus planted in November 1994.

Table 2, Continued.

| Species: | Cultivar | Color--Type | Source | Season average rating | Comments |
|----------|--|----------------------|--------|-----------------------|---|
| P | Rally Pure White | White--Clear | PA | 3.1 | Pure white color |
| P | Delta Pure White | White--Clear | S&G | 3.0 | Pure white color |
| P | Fama Dark-Eyed White | White--Blotch | BEN | 3.4 | Best white blotched pansy |
| P | Universal Plus White Blotch | White--Blotch | GOLD | 3.4 | |
| P | Vernale White ^{w/} Blotch | White--Blotch | ELI | 3.4 | |
| P | Accord White Blotch | White--Blotch | GOLD | 3.3 | Good flower size; strong blotch coloration |
| P | Skyline White | White--Blotch | S&G | 3.3 | |
| P | Rally White ^{w/} Blotch | White--Blotch | PA | 3.1 | |
| P | Delta White ^{w/} Blotch | White--Blotch | S&G | 3.0 | Blotch is faint |
| P | Bingo White ^{w/} Blotch (Imp) | White--Blotch | PA | 2.8 | Large flower size; strong blotch coloration |
| P | Universal Plus Ivory ^{w/} Rose Blotch | White/Rose--Clear | GOLD | 3.0 | Blotch is Rose |
| P | Vernale Cassis Shades | Rose/White--Blotch | ELI | 3.1 | |
| P | Clear Sky Primrose | Yellow, light--Clear | S&G | 3.4 | Best light-yellow clear pansy |
| P | Delta Pure Primrose | Yellow, light--Clear | S&G | 3.0 | |
| P | Delta Pure Yellow | Yellow--Clear | S&G | 3.4 | Best medium-yellow clear pansy; large flowers |
| P | Accord Clear Yellow | Yellow--Clear | GOLD | 3.4 | |
| P | Universal Plus Yellow | Yellow--Clear | GOLD | 3.4 | |
| P | Bingo Yellow | Yellow--Clear | PA | 3.2 | Very large flowers |
| P | Rally Yellow (Imp) | Yellow--Clear | PA | 3.2 | |
| P | Exp. Yellow | Yellow--Clear | PA | 3.1 | |
| P | 94BP08 | Yellow--Clear | AAS | 3.1 | Labeled as a clear, but flowers have a blotch |
| P | Fama Golden Yellow | Yellow, dark--Clear | BEN | 3.4 | Best dark-yellow clear pansy |
| P | Bingo Red & Yellow | Yellow/Red--Clear | PA | 3.3 | Has a faint blotch |
| P | Delta Yellow/Red Wing | Yellow/Red--Clear | S&G | 3.1 | |
| P | Universal Plus Yellow Blotch | Yellow--Blotch | GOLD | 3.8 | Best yellow blotched pansy |
| P | Skyline Yellow | Yellow--Blotch | S&G | 3.4 | |
| P | Rally Yellow ^{w/} Blotch | Yellow--Blotch | PA | 3.4 | |
| P | Giant Forerunner Yellow ^{w/} Eye | Yellow--Blotch | AAS | 3.2 | |
| P | Roc Yellow | Yellow--Blotch | AAS | 3.2 | |
| P | Fama Dark-Eyed Yellow | Yellow--Blotch | BEN | 3.1 | Flowers are large |
| P | Universal Plus Yellow ^{w/} Red Blotch | Yellow--Blotch | GOLD | 3.1 | Blotch is Red |
| P | Fama Love Me | Yellow--Blotch | BEN | 3.1 | Blotch is Brown; touch of red on upper petal |
| P | Bingo Yellow ^{w/} Blotch | Yellow--Blotch | PA | 3.0 | Flowers are very large |

Table 2, Continued.

| Species: | | | | | |
|----------|---|---------------------|---------------|------------------------------|---|
| | Cultivar | Color--Type | Source | Season average rating | Comments |
| P | Accord Yellow Blotch | Yellow--Blotch | GOLD | 3.0 | |
| P | Delta Yellow ^{w/} Blotch | Yellow--Blotch | S&G | 3.0 | Flowers are large |
| P | Corso Yellow ^{w/} Blotch | Yellow--Blotch | AAS | 3.0 | |
| P | Skyline Yellow Red Wing | Yellow/Red--Blotch | S&G | 3.7 | Very attractive color combination on petals |
| P | Scala Yellow ^{w/} Blue Wings | Yellow/Blue--Blotch | ELI | 3.2 | Flower coloration is not uniform on all plants |
| P | Clear Sky Orange | Orange--Clear | S&G | 3.2 | Best clear orange pansy |
| P | Fama Orange | Orange--Clear | BEN | 3.2 | |
| P | Rally Orange | Orange--Clear | PA | 3.1 | |
| P | Universal Plus Orange | Orange--Clear | GOLD | 3.0 | |
| P | Vernale Apricot | Orange--Clear | ELI | 2.9 | |
| P | Rally Orange ^{w/} Blotch | Orange--Blotch | PA | 3.2 | Best orange blotched pansy |
| P | Vernale Orange ^{w/} Blotch | Orange--Blotch | ELI | 3.0 | |
| P | Universal Plus Orange Blotch | Orange--Blotch | GOLD | 3.0 | |
| P | Bingo Light Rose | Rose, light--Clear | PA | 3.4 | Best clear rose pansy; more flowers than other Bingos |
| P | Universal Plus Rose | Rose--Clear | GOLD | 2.9 | |
| P | Universal Plus Rose Blotch | Rose--Blotch | GOLD | 3.7 | Best blotched rose pansy |
| P | Bingo Dark Rose ^{w/} Blotch | Rose, dark--Blotch | PA | 3.3 | |
| P | Accord Rose Blotch | Rose--Blotch | GOLD | 3.3 | |
| P | Scala Carmine Rose ^{w/} Blotch | Rose--Blotch | ELI | 3.2 | |
| P | Vernale Carmine Rose ^{w/} Blotch | Rose--Blotch | ELI | 3.0 | |
| P | Universal Plus Red | Red--Clear | GOLD | 3.1 | Best red clear pansy |
| P | Clear Sky Red | Red--Clear | S&G | 3.1 | |
| P | Skyline Red | Red--Blotch | S&G | 3.5 | Best red blotched pansy |
| P | Delta Carmine ^{w/} Blotch | Red--Blotch | S&G | 3.3 | Non-uniform flower coloration from plant to plant |
| P | Universal Plus Red Blotch | Red--Blotch | GOLD | 3.3 | |
| P | Universal Plus Red Wing | Red--Blotch | GOLD | 3.2 | |
| P | Fama Red | Red--Blotch | BEN | 3.1 | |
| P | Bingo Red ^{w/} Blotch | Red--Blotch | PA | 3.1 | |
| P | Accord Red Blotch | Red--Blotch | GOLD | 3.1 | |
| P | Universal Plus Light Blue | Blue, light--Clear | GOLD | 3.5 | Best light-blue clear pansy |
| P | Fama Silver Blue | Blue, light--Clear | BEN | 3.4 | |
| P | Exp. Denim Blue | Blue--Clear | PA | 3.8 | Best medium-blue clear pansy |
| P | Rally True Blue | Blue--Clear | PA | 3.8 | |

Table 2, Continued.

| Species: | Cultivar | Color--Type | Source | Season average rating | Comments |
|----------|--|----------------------|--------|-----------------------|--|
| P | Fama True Blue | Blue--Clear | BEN | 3.7 | |
| P | 94BP09 | Blue--Clear | AAS | 3.7 | |
| P | Accord Clear Blue | Blue--Clear | GOLD | 3.7 | |
| P | Universal Plus True Blue | Blue--Clear | GOLD | 3.7 | |
| P | Delta True Blue | Blue--Clear | S&G | 3.4 | |
| P | Scala Mid Blue | Blue--Clear | ELI | 3.2 | |
| P | Rally Light Blue ^w / Blotch | Blue, light--Blotch | PA | 3.7 | Best blue blotched pansy & light-blue blotched pansy |
| P | Delta Blue ^w / Blotch | Blue--Blotch | S&G | 3.6 | Best medium-blue blotched pansy |
| P | Skyline Blue | Blue--Blotch | S&G | 3.6 | |
| P | Fama Dark-Eyed Blue | Blue--Blotch | BEN | 3.6 | |
| P | Rally Deep Blue ^w / Blotch | Blue, dark--Blotch | PA | 3.5 | Best dark-blue blotched pansy |
| P | Accord Blue Blotch | Blue--Blotch | GOLD | 3.4 | |
| P | Regal Blue | Blue--Blotch | AAS | 3.4 | |
| P | Futura Blue ^w / Blotch | Blue--Blotch | AAS | 3.2 | |
| P | Universal Plus Blue Blotch | Blue--Blotch | GOLD | 3.2 | |
| P | Bingo Blue ^w / Blotch | Blue--Blotch | PA | 3.1 | |
| P | Giant Forerunner Blue | Blue--Blotch | AAS | 3.1 | |
| P | Rally Lilac Cap | Purple, light--Clear | PA | 3.9 | Best purple clear pansy |
| P | Exp. Midnight | Purple--Clear | PA | 3.6 | |
| P | Clear Sky Purple | Purple--Clear | S&G | 3.5 | |
| P | Bingo Deep Purple | Purple, dark--Clear | PA | 3.1 | |
| P | Fama See-Me | Purple--Blotch | BEN | 3.8 | Best purple blotched pansy |
| P | Universal Plus Violet Blotch | Purple--Blotch | GOLD | 3.6 | |
| P | Delta Violet/Face | Purple--Blotch | S&G | 3.3 | |
| P | Exp. Beaconsfield | Purple/White--Blotch | PA | 4.0 | Best purple/white bicolor pansy |
| P | Universal Plus Beaconsfield | Purple/White--Blotch | GOLD | 3.7 | |
| P | Skyline White/Purple Wing | Purple/White--Blotch | S&G | 3.4 | |
| P | Delta Pure Colours Formula Mix | Mix--Clear | S&G | 3.3 | Best clear mix of pansies |
| P | Universal Plus Clear Mixture | Mix--Clear | GOLD | 3.2 | |
| P | Skyline Mix | Mix--Blotch | S&G | 3.4 | Best blotched mix of pansies |
| P | Universal Plus Blotch Mixture | Mix--Blotch | GOLD | 3.3 | |
| P | Accord Mixture | Mix--Both | GOLD | 3.6 | Best combination mix and best mix of pansies |
| P | All Sky Formula Mix | Mix--Both | S&G | 3.2 | |

Table 2, Continued.

| Species: | Cultivar | Color--Type | Source | Season average rating | Comments |
|----------|---------------------------------|-----------------|--------|-----------------------|---|
| P | Universal Plus Mixture | Mix--Both | GOLD | 3.2 | |
| P | Delta Formula Mix | Mix--Both | S&G | 3.2 | |
| S | Liberty Mixture | Mix | GOLD | 2.5 | |
| S | Bells Mixture | Mix | GOLD | 2.5 | |
| S | Chimes Mixture | Mix | GOLD | 2.2 | |
| V | Alpine Summer | Yellow/Purple | AAS | 4.0 | Best viola in trial; spreading growth habit |
| V | Jewel Purple ^{w/} Face | Purple | AAS | 3.9 | |
| V | 94BP18 | Maroon & Yellow | AAS | 3.5 | |
| V | Velour Blue | Blue | CSP | 3.5 | Very compact growth habit |
| V | Cuty | Purple & White | AAS | 3.4 | |
| V | Pretty | Maroon | AAS | 3.3 | |
| V | Maroon Picotee | Maroon | AAS | 3.3 | |
| V | Mini Pansy Purple | Purple | CSP | 3.2 | Very compact growth habit |

Series Ratings

The ratings for the dianthus and pansy series that had at least three entries are listed to the right in descending order of average performance. We planted three series of dianthus (but two were planted twice; once in May and then in November) and 10 series of pansies.

The dianthus with a † were planted in May of 1994 and were compared to dianthus planted in November. In every case, the November planted cultivars outperformed May-planted cultivars.

Skyline was the top performing pansy series in the 1994/1995 winter trials. Rally and Fama ranked close behind. Although the Bingo series was the lowest rated, individual flowers on Bingo were very large. The main reason for the low rating of Bingo was fewer flowers (less overall color show) than the other series trialed.

The number of pansies continues to increase each year, and the quality appears to improve as well. However, there is still a need for contrasting plant materials during our cool season in the Southeast, and dianthus is a refreshing addition to

the winter landscape. Hopefully other companion plants will be discovered in the future.

| Series | Number trialed | Source | Avg. rating |
|-----------------|----------------|--------|-------------|
| Dianthus | | | |
| Ideal | 3 | ELI | 3.5 |
| Floral Lace | 3 | BALL | 3.4 |
| Princess | 6 | GOLD | 3.0 |
| Floral Lace† | 3 | BALL | 2.3 |
| Princess† | 6 | GOLD | 2.1 |
| Pansy | | | |
| Skyline | 7 | S&G | 3.5 |
| Rally | 10 | PA | 3.4 |
| Fama | 10 | BEN | 3.4 |
| Accord | 9 | GOLD | 3.3 |
| Universal Plus | 21 | GOLD | 3.3 |
| Clear Sky | 4 | S&G | 3.3 |
| Delta | 12 | S&G | 3.2 |
| Scala | 3 | ELI | 3.2 |
| Vernale | 6 | ELI | 3.1 |
| Bingo | 9 | PA | 3.1 |

†Series planted in May 1994 rather than Nov.

Table 3. Weekly ratings and degree of flowering ("-" after the rating indicates less than 50% of the plants were flowering) for pansy, viola, English daisy, and dianthus cultivars. Cultivars are listed in the same order as in Table 2.

| Cultivar | Source | Weekly ratings (week of the year) and degree of flowering | | | | | | | | | | | | | | | | | | Wks in bloom | | | | | | |
|----------------------|--------|---|-----|-----|------|------|------|------|------|------|------|------|------|------|------|------|------|------|------|--------------|------|------|------|-----|-----|----|
| | | 47 | 48 | 49 | 50 | 51 | 52 | 1 | 2 | 3 | 4 | 5 | 6 | 7 | 8 | 9 | 10 | 11 | 12 | | 13 | 14 | 15 | 16 | 17 | 18 |
| Princess White | GOLD | 3 | 3 | 3 | 3.5 | 3.5- | 3.5- | 3.5- | 3.5- | 3.5- | 3- | 3- | 2- | 2- | 2- | 2- | 1.5- | 2- | 2- | 3- | 3.5 | 3 | 3 | 3 | 3 | 9 |
| Princess White† | GOLD | 2.5 | 2.5 | 2.5 | 2.5 | 2.5 | 2.5 | 2.5- | 2.5- | 2.5- | 2.5- | 2- | 1- | 1- | 1- | 1.5- | 1- | 1- | 1- | 1.5- | 2 | 2 | 2.5 | 3 | 3 | 11 |
| Color Magician | AAS | 3 | 3 | 3 | 3 | 3 | 3 | 3 | 3- | 3- | 3- | 3- | 3- | 3- | 3- | 3.5- | 3.5- | 3.5- | 3.5 | 4 | 4 | 4 | 4.5 | 4.5 | 4.5 | 14 |
| Color Magician† | FLS | 3.5 | 3 | 3 | 3 | 3 | 3.5 | 3.5 | 3.5 | 3.5 | 3 | 2.5 | 2- | 2- | 2- | 2.5- | 2.5- | 2.5- | 2.5 | 3.5 | 4 | 4 | 4.5 | 4 | 4.5 | 18 |
| Floral Lace Picotee† | BALL | 3 | 3 | 3 | 3 | 3 | 3 | 3.5 | 3 | 3 | 2.5 | 2 | 1.5- | 1.5- | 1.5- | 1.5- | 1.5- | 1.5 | 2 | 2.5 | 3 | 3.5 | 3.5 | 3.5 | 18 | |
| Floral Lace Picotee | BALL | 3 | 3- | 3 | 3.5- | 3.5- | 3.5- | 3.5- | 3.5- | 3.5- | 3.5- | 4- | 4- | 4- | 3.5- | 4- | 4- | 4 | 4 | 4 | 4.5 | 4.5 | 4.5 | 4.5 | 10 | |
| Ideal Pink | ELI | 3 | 3 | 3 | 3 | 3 | 3- | 3- | 3- | 3- | 3- | 3- | 3- | 3- | 3- | 3- | 3- | 3 | 3.5 | 4 | 4 | 4 | 4 | 4 | 12 | |
| Princess Pink | GOLD | 3 | 3 | 3 | 3 | 3- | 3- | 3- | 3.5- | 3- | 3- | 3- | 2.5- | 2.5- | 2.5- | 2.5- | 2.5- | 3- | 3- | 3- | 4 | 4 | 4 | 4.5 | 4.5 | 9 |
| Raspberry Parfait | GOLD | 3 | 3 | 3 | 3- | 3- | 3- | 3- | 3- | 3.5- | 3.5- | 3.5- | 3.5- | 3- | 3- | 2- | 2.5- | 2.5- | 3- | 3- | 3.5- | 3.5- | 3.5- | 3.5 | 4 | 5 |
| Floral Lace Rose | BALL | 3- | 3- | 3 | 3 | 3 | 3 | 3 | 3.5- | 3.5- | 3.5- | 3.5- | 3.5- | 3- | 3- | 3- | 3- | 3 | 2.5 | 3 | 3 | 3 | 3 | 3 | 12 | |
| Princess Salmon | GOLD | 3 | 3 | 3 | 3 | 3 | 3 | 3 | 3- | 3- | 3- | 3- | 2.5- | 2- | 2- | 1.5- | 1.5- | 1.5- | 1.5- | 2- | 3- | 3 | 3 | 3 | 3 | 11 |
| Princess Salmon† | GOLD | 2.5 | 2.5 | 2.5 | 2.5 | 2.5 | 3 | 3 | 2.5- | 2- | 2- | 1.5- | 1- | 1- | 1- | 1- | 1- | 1- | 1- | 1- | 1.5 | 2 | 2.5 | 3.5 | 3.5 | 12 |
| Floral Lace Rose† | BALL | 2.5 | 2 | 2 | 2 | 2 | 2 | 2 | 1.5- | 1.5- | 1- | 1- | 1- | 1- | 1- | 1- | 1- | 1- | 1- | 1.5- | 1.5 | 1.5 | 2 | 2 | 2 | 12 |
| Princess Pink† | GOLD | 2.5 | 2 | 2 | 2 | 2 | 2- | 2- | 1.5- | 1.5- | 1.5- | 1- | 1- | 1- | 1- | .5- | .5- | .5- | .5- | 1- | 1.5- | 1.5 | 2.5 | 2.5 | 2.5 | 9 |
| Ideal Crimson | ELI | 3 | 3 | 3 | 3.5 | 3.5 | 3.5- | 3.5- | 3.5- | 4- | 4- | 4-- | 4- | 4- | 3.5- | 3.5- | 3.5- | 3.5- | 4 | 4 | 4 | 4 | 4 | 4.5 | 4.5 | 12 |
| Princess Scarlet | GOLD | 3 | 3 | 3 | 3.5- | 3.5- | 3.5- | 3.5- | 3.5- | 3.5- | 3.5- | 3.5- | 3.5- | 3- | 2.5- | 2.5- | 2.5- | 2.5- | 3- | 3- | 4 | 4 | 4 | 3.5 | 3.5 | 8 |
| Strawberry Parfait | GOLD | 3 | 3 | 3 | 3 | 3- | 3- | 3- | 3- | 3- | 3- | 3- | 3- | 2.5- | 2.5- | 2- | 2- | 2.5- | 2.5- | 2.5- | 3.5- | 3.5- | 3.5- | 3 | 3 | 6 |
| Princess Crimson | GOLD | 3 | 3 | 3 | 3 | 3 | 3- | 3- | 3- | 3- | 3- | 3.5- | 3- | 3- | 2.5- | 2- | 2- | 2- | 2- | 2.5- | 3- | 3 | 3 | 3.5 | 3.5 | 9 |
| Princess Scarlet† | GOLD | 3.5 | 3.5 | 3.5 | 3.5 | 3- | 3- | 3- | 3- | 3- | 3- | 2- | 1.5- | 1- | 1- | 1- | 1- | 1- | 1.5- | 2- | 2- | 2.5 | 3.5 | 3.5 | 4 | 8 |
| Princess Crimson† | GOLD | 4 | 3.5 | 3.5 | 3.5 | 3 | 3- | 3.5- | 3- | 2.5- | 2.5- | 2- | 1.5- | 1- | 1- | 1- | 1- | .5- | .5- | 2- | 2- | 2.5 | 3.5 | 4 | 4.5 | 9 |
| Raspberry Parfait† | GOLD | 3 | 3 | 3 | 3 | 3- | 3- | 3- | 2.5- | 2.5- | 2.5- | 2.5- | 2- | 1.5- | 1.5- | 1- | 1- | 1- | 1- | 2- | 2 | 2 | 2.5 | 2.5 | 2.5 | 9 |
| Strawberry Parfait† | GOLD | 2.5 | 2 | 2 | 2- | 2- | 2- | 2.5- | 2- | 2- | 2- | 2- | 1.5- | 1- | 1- | 1- | 1- | 1- | 1- | 1.5- | 1.5- | 1.5- | 2- | 2 | 2 | 5 |
| Ideal Deep Violet | ELI | 3 | 3 | 3 | 3 | 3 | 3.5 | 3.5- | 3.5- | 3.5- | 3.5- | 4- | 4- | 4- | 3.5- | 3.5 | 3.5- | 3.5 | 4 | 4 | 4 | 4 | 4 | 4.5 | 4.5 | 14 |
| Floral Lace Purple | BALL | 3 | 3- | 3- | 3- | 3- | 3- | 3.5- | 3.5- | 3.5- | 3.5- | 3.5- | 3.5- | 3.5- | 3.5- | 3- | 3.5- | 3.5 | 3.5- | 3.5 | 3.5 | 4 | 4 | 4 | 4 | 7 |
| Princess Purple | GOLD | 3 | 3 | 3 | 3- | 3- | 3- | 3- | 3- | 3- | 3- | 3- | 3- | 3- | 3- | 2.5- | 3- | 3- | 3 | 3 | 3 | 3.5 | 3.5 | 5 | 5 | 10 |
| Floral Lace Purple† | BALL | 3.5 | 3 | 3 | 3 | 3 | 3 | 3 | 2.5 | 2.5 | 2 | 1.5 | 1.5- | 1.5- | 1.5- | 1.5- | 1.5- | 1.5- | 2 | 3 | 3.5 | 4 | 4 | 4.5 | 4.5 | 18 |
| Princess Purple† | GOLD | 3.5 | 3 | 3 | 3 | 3 | 3 | 3 | 2.5- | 2- | 2- | 1.5- | 1- | 1- | 1- | 1- | 1- | 1- | 1- | 2.5 | 3 | 3.5 | 3.5 | 3.5 | 4 | 13 |
| Habanera Rose | BEN | 3- | 3- | 3- | 3- | 3- | 3- | 3- | 2.5- | 2.5- | 2.5- | 2- | 1.5- | 1.5- | 1.5- | 1.5- | 1.5- | 1- | 1- | 1- | 1 | 1 | 1 | 1 | 1 | 5 |

| | | | | | | | | | | | | | | | | | |
|------|---------|---------|--------|---------|---------|---------|--------|---------|---------|---------|--------|--------|---------|---------|--------|--------|---------|
| Week | 47 | 48 | 49 | 50 | 51 | 52 | 1 | 2 | 3 | 4 | 5 | 6 | 7 | 8 | 9 | 10 | 11 |
| Date | 23 Nov. | 30 Nov. | 7 Dec. | 14 Dec. | 21 Dec. | 28 Dec. | 4 Jan. | 11 Jan. | 18 Jan. | 25 Jan. | 1 Feb. | 8 Feb. | 15 Feb. | 22 Feb. | 1 Mar. | 8 Mar. | 15 Mar. |

| | | | | | | | |
|------|---------|---------|--------|---------|---------|---------|-------|
| Week | 12 | 13 | 14 | 15 | 16 | 17 | 18 |
| Date | 22 Mar. | 29 Mar. | 5 Apr. | 12 Apr. | 19 Apr. | 26 Apr. | 3 May |

†These dianthus were planted in May 1994 and compared to dianthus planted in November 1994.

Table 3, Continued.

| Cultivar | Source | Weekly ratings (week of the year) and degree of flowering | | | | | | | | | | | | | | | | | | Wks in bloom | | | | | | | |
|---|--------|---|-----|-----|-----|-----|-----|-----|------|------|------|-----|------|------|------|-----|-----|-----|-----|--------------|-----|-----|-----|-----|-----|-----|----|
| | | 47 | 48 | 49 | 50 | 51 | 52 | 1 | 2 | 3 | 4 | 5 | 6 | 7 | 8 | 9 | 10 | 11 | 12 | | 13 | 14 | 15 | 16 | 17 | 18 | |
| Habanera Red | BEN | 3- | 3- | 3- | 3- | 3- | 3- | 3- | 2.5- | 2.5- | 2.5- | 2- | 1.5- | 1.5- | 1.5- | 1- | 1- | 1- | 1- | 1- | 1 | 1 | 1 | 1 | 1 | 5 | |
| Habanera White | BEN | 3- | 3- | 3- | 3- | 3- | 3- | 3- | 2.5- | 2.5- | 2.5- | 2- | 1.5- | 1.5- | 1.5- | 1- | 1- | 1- | 1- | 1- | 1 | 1 | 1 | 1 | 1 | 4 | |
| Accord Clear White | GOLD | 3 | 3 | 3 | 3 | 3 | 3 | 3 | 3 | 3 | 3 | 3 | 3.5 | 3.5 | 3.5 | 3.5 | 3.5 | 3.5 | 3.5 | 3.5 | 4 | 4 | 4 | 4 | 4 | 24 | |
| Vernale Pure White | ELI | 3 | 3 | 3 | 3 | 3 | 3 | 3 | 3 | 3 | 3 | 3.5 | 3.5- | 3.5 | 3.5 | 3.5 | 3.5 | 3.5 | 3.5 | 3.5 | 4 | 4 | 4 | 3.5 | 3 | 23 | |
| Universal Plus White | GOLD | 3 | 3 | 3 | 3 | 3 | 3 | 3.5 | 3.5 | 3.5 | 3.5 | 3 | 3 | 3 | 3 | 3.5 | 3.5 | 3.5 | 3.5 | 3.5 | 4 | 3.5 | 3.5 | 3.5 | 3.5 | 24 | |
| Rally Pure White | PA | 3 | 3 | 3 | 3 | 3 | 3 | 3 | 3 | 3 | 3 | 3 | 3 | 3 | 3 | 3 | 3 | 3 | 3 | 3 | 3.5 | 3.5 | 4 | 4 | 3.5 | 24 | |
| Delta Pure White | S&G | 3 | 3 | 3 | 3 | 3 | 3 | 3 | 3 | 3 | 3 | 3 | 3 | 3 | 3 | 3 | 3 | 3 | 3 | 3 | 3 | 3 | 3 | 3 | 3 | 24 | |
| Fama Dark-Eyed White | BEN | 3 | 3 | 3 | 3 | 3 | 3 | 3 | 3 | 3 | 3 | 3 | 3.5 | 3.5 | 3.5 | 3 | 3 | 3.5 | 3.5 | 3.5 | 4 | 4.5 | 4.5 | 4.5 | 4.5 | 24 | |
| Universal Plus White Blotch | GOLD | 3 | 3 | 3 | 3 | 3 | 3 | 3 | 3 | 3 | 3 | 3 | 3.5 | 3.5 | 3.5 | 3 | 3.5 | 3.5 | 3.5 | 3.5 | 4 | 4 | 4.5 | 5 | 4 | 24 | |
| Vernale White ^w / Blotch | ELI | 3 | 3 | 3- | 3 | 3 | 3 | 3 | 3 | 3- | 3- | 3 | 3 | 3 | 3.5 | 3.5 | 3 | 3 | 3.5 | 4 | 4.5 | 4 | 4 | 4.5 | 4 | 21 | |
| Accord White Blotch | GOLD | 3 | 3 | 3 | 3 | 3 | 3 | 3 | 3 | 3 | 3 | 3 | 3.5 | 3.5 | 3.5 | 3 | 3 | 3 | 3.5 | 3.5 | 4 | 4 | 4 | 4 | 4 | 24 | |
| Skyline White | S&G | 3 | 3- | 3- | 3 | 3 | 3- | 3 | 3 | 3 | 3 | 3 | 3 | 3 | 3 | 3 | 3 | 3 | 3.5 | 3.5 | 4 | 4 | 4 | 4 | 4 | 21 | |
| Rally White ^w / Blotch | PA | 3 | 3 | 3 | 3 | 3 | 3 | 3 | 3 | 3- | 3 | 3- | 3 | 3 | 3 | 3 | 3 | 3 | 3 | 3 | 3 | 3 | 3 | 3.5 | 4 | 4.5 | 22 |
| Delta White ^w / Blotch | S&G | 3 | 2.5 | 2.5 | 2.5 | 2.5 | 2.5 | 2.5 | 2.5 | 2.5 | 3 | 3 | 3 | 3 | 3 | 3 | 3 | 3.5 | 3.5 | 3.5 | 3.5 | 3.5 | 3.5 | 3.5 | 3.5 | 24 | |
| Bingo White ^w / Blotch (Imp) | PA | 3 | 2.5 | 2.5 | 2.5 | 2.5 | 2.5 | 2.5 | 2.5 | 2.5- | 2.5 | 2.5 | 2.5 | 2.5 | 2.5 | 3 | 3 | 3 | 3 | 3 | 3 | 3 | 3 | 3 | 3.5 | 3.5 | 23 |
| Universal Plus Ivory ^w / Rose Blotch | GOLD | 3 | 3 | 3 | 3 | 3 | 3 | 3 | 3 | 3 | 3 | 3 | 3 | 3 | 3 | 3 | 3 | 2.5 | 2.5 | 3 | 3 | 3 | 3 | 3.5 | 3.5 | 3.5 | 24 |
| Vernale Cassis Shades | ELI | 3 | 2.5 | 3 | 3 | 3 | 3 | 3 | 3- | 3- | 3 | 3 | 3 | 3 | 3 | 3 | 3 | 3 | 3 | 3 | 3.5 | 3.5 | 3.5 | 4 | 4 | 23 | |
| Clear Sky Primrose | S&G | 3 | 3 | 3 | 3 | 3 | 3 | 3 | 3 | 3 | 3 | 3 | 3 | 3.5 | 3.5 | 3 | 3 | 3 | 3.5 | 3.5 | 4 | 4 | 4.5 | 4.5 | 4.5 | 24 | |
| Delta Pure Primrose | S&G | 3 | 3 | 3 | 3 | 3 | 3 | 3 | 3 | 3 | 3 | 3 | 3 | 3 | 3 | 3.5 | 3 | 3 | 3 | 3 | 3 | 3 | 3 | 3 | 3 | 24 | |
| Delta Pure Yellow | S&G | 3 | 3 | 3 | 3 | 3 | 3 | 3 | 3 | 3.5 | 3.5 | 3.5 | 3.5 | 3.5 | 3.5 | 3.5 | 3.5 | 3.5 | 3.5 | 3.5 | 3.5 | 3.5 | 3.5 | 3.5 | 4 | 4.5 | 24 |
| Accord Clear Yellow | GOLD | 3 | 3 | 3 | 3 | 3 | 3 | 3 | 3 | 3.5 | 3.5 | 3.5 | 3.5 | 3.5 | 3.5 | 3.5 | 3.5 | 3.5 | 3.5 | 3.5 | 3.5 | 3.5 | 3.5 | 4 | 4 | 4 | 24 |
| Universal Plus Yellow | GOLD | 3 | 3 | 3 | 3 | 3 | 3 | 3 | 3 | 3 | 3 | 3 | 3 | 3.5 | 3.5 | 3.5 | 3.5 | 3.5 | 3 | 3.5 | 3.5 | 4 | 4.5 | 4.5 | 4.5 | 24 | |
| Bingo Yellow | PA | 3- | 3- | 3 | 3 | 3 | 3 | 3 | 3- | 3- | 3- | 3 | 3 | 3 | 3 | 3.5 | 3.5 | 3.5 | 3 | 3 | 3 | 3 | 3.5 | 4 | 4 | 4 | 19 |
| Rally Yellow (Imp) | PA | 3 | 3 | 3 | 3 | 3 | 3 | 3 | 3 | 3 | 3 | 3 | 3 | 3 | 3 | 3.5 | 3.5 | 3 | 3 | 3 | 3.5 | 3.5 | 4 | 4 | 4 | 24 | |
| Exp. Yellow | PA | 3 | 3 | 3 | 3 | 3 | 3 | 3 | 3 | 3 | 3 | 3 | 3 | 3 | 3 | 3 | 3 | 3 | 3 | 3 | 3 | 3 | 3 | 3.5 | 3.5 | 4 | 24 |
| 94BP08 | AAS | 3 | 3 | 3 | 3 | 3 | 3- | 3 | 3 | 3 | 3 | 3 | 3 | 3 | 3 | 3 | 3 | 3 | 3 | 3 | 3 | 3 | 3 | 3.5 | 3.5 | 4 | 23 |
| Fama Golden Yellow | BEN | 3 | 3- | 3 | 3 | 3 | 3 | 3 | 3 | 3 | 3 | 3 | 3.5 | 3.5 | 3.5 | 3.5 | 3 | 3 | 3.5 | 3.5 | 3.5 | 4 | 4 | 4 | 4.5 | 4.5 | 23 |
| Bingo Red & Yellow | PA | 3 | 2.5 | 3 | 3 | 3 | 3 | 3 | 3 | 3 | 3 | 3 | 3 | 3 | 3 | 3 | 3.5 | 3 | 3.5 | 3.5 | 3.5 | 3.5 | 3.5 | 4 | 4.5 | 4.5 | 24 |

| | | | | | | | | | | | | | | | | | |
|------|---------|---------|--------|---------|---------|---------|--------|---------|---------|---------|--------|--------|---------|---------|--------|--------|---------|
| Week | 47 | 48 | 49 | 50 | 51 | 52 | 1 | 2 | 3 | 4 | 5 | 6 | 7 | 8 | 9 | 10 | 11 |
| Date | 23 Nov. | 30 Nov. | 7 Dec. | 14 Dec. | 21 Dec. | 28 Dec. | 4 Jan. | 11 Jan. | 18 Jan. | 25 Jan. | 1 Feb. | 8 Feb. | 15 Feb. | 22 Feb. | 1 Mar. | 8 Mar. | 15 Mar. |

| | | | | | | | |
|------|---------|---------|--------|---------|---------|---------|-------|
| Week | 12 | 13 | 14 | 15 | 16 | 17 | 18 |
| Date | 22 Mar. | 29 Mar. | 5 Apr. | 12 Apr. | 19 Apr. | 26 Apr. | 3 May |

Table 3, Continued.

| Cultivar | Source | Weekly ratings (week of the year) and degree of flowering | | | | | | | | | | | | | | | | | | Wks in bloom | | | | | | | | |
|---|--------|---|-----|-----|-----|----|-----|-----|-----|-----|-----|-----|-----|-----|-----|-----|-----|-----|-----|--------------|-----|-----|-----|-----|-----|-----|-----|----|
| | | 47 | 48 | 49 | 50 | 51 | 52 | 1 | 2 | 3 | 4 | 5 | 6 | 7 | 8 | 9 | 10 | 11 | 12 | | 13 | 14 | 15 | 16 | 17 | 18 | | |
| Delta Yellow/Red Wing | S&G | 3 | 3 | 3 | 3 | 3 | 3 | 3 | 3 | 3 | 3 | 3 | 3 | 3 | 3 | 3 | 3 | 3 | 3 | 3 | 3 | 3.5 | 3.5 | 4 | 4 | 24 | | |
| Universal Plus Yellow Blotch | GOLD | 3 | 3 | 3 | 3 | 3 | 3 | 3 | 3 | 3 | 3.5 | 3.5 | 3.5 | 3.5 | 4 | 4 | 4 | 4 | 4 | 4.5 | 4.5 | 4.5 | 4.5 | 4.5 | 5 | 5 | 24 | |
| Skyline Yellow | S&G | 3 | 3 | 3 | 3 | 3 | 3 | 3 | 3 | 3 | 3 | 3 | 3 | 3.5 | 3.5 | 3.5 | 4 | 4 | 3.5 | 3.5 | 4 | 4 | 4 | 4 | 4 | 24 | | |
| Rally Yellow ^w / Blotch | PA | 3 | 3 | 3 | 3 | 3 | 3 | 3 | 3 | 3 | 3 | 3 | 3 | 3 | 3 | 3.5 | 3.5 | 3.5 | 3.5 | 4 | 4 | 4 | 4 | 4.5 | 4.5 | 4.5 | 24 | |
| Giant Forerunner Yellow ^w / Eye | AAS | 3- | 3- | 3 | 3 | 3 | 3 | 3 | 3 | 3 | 3 | 3 | 3 | 3 | 3.5 | 3.5 | 3.5 | 3.5 | 3.5 | 3 | 3.5 | 3.5 | 3.5 | 3.5 | 3.5 | 22 | | |
| Roc Yellow | AAS | 3 | 3 | 3 | 3 | 3 | 3 | 3 | 3 | 3 | 3 | 3 | 3 | 3 | 3 | 3 | 3.5 | 3.5 | 3.5 | 3 | 3 | 3 | 3.5 | 4 | 4 | 24 | | |
| Fama Dark-Eyed Yellow | BEN | 3 | 3 | 3 | 3 | 3 | 3 | 3 | 3 | 3 | 3- | 3- | 3 | 3 | 3 | 3 | 3 | 3 | 3 | 3 | 3 | 3.5 | 3.5 | 3.5 | 4 | 4 | 22 | |
| Universal Plus Yellow ^w / Red Blotch | GOLD | 3 | 3 | 3 | 3 | 3 | 3 | 3 | 3 | 3 | 3- | 3 | 3 | 3 | 3 | 3 | 3 | 3 | 3 | 3 | 3 | 3 | 3 | 3.5 | 4 | 4 | 23 | |
| Fama Love Me | BEN | 3- | 3- | 3 | 3 | 3 | 3 | 3 | 3 | 3 | 3 | 3 | 3 | 3- | 3 | 3 | 3 | 3 | 3 | 3 | 3 | 3 | 3 | 3.5 | 3.5 | 4 | 21 | |
| Bingo Yellow ^w / Blotch | PA | 3 | 3 | 3 | 3 | 3 | 3 | 3 | 3 | 3 | 3- | 3- | 3- | 3- | 3- | 3- | 3- | 3 | 3 | 3 | 3 | 3 | 3 | 3 | 3.5 | 3.5 | 17 | |
| Accord Yellow Blotch | GOLD | 3 | 3 | 3 | 3 | 3 | 3 | 3 | 3 | 3 | 3 | 3 | 3 | 3 | 3 | 3 | 3 | 3 | 3 | 3 | 3 | 3 | 3 | 3 | 3.5 | 3.5 | 24 | |
| Delta Yellow ^w / Blotch | S&G | 3 | 3 | 3 | 3 | 3 | 3 | 3 | 3 | 3 | 3 | 3 | 3 | 3 | 3 | 3 | 3 | 3 | 3 | 3 | 3 | 3 | 3 | 3 | 3 | 3 | 24 | |
| Corso Yellow ^w / Blotch | AAS | 3 | 3 | 3 | 3 | 3 | 3 | 3 | 3 | 3 | 3 | 3 | 3 | 3 | 3 | 3 | 3 | 3 | 3 | 3 | 3 | 3 | 3 | 3 | 3 | 3 | 24 | |
| Skyline Yellow Red Wing | S&G | 3- | 3 | 3 | 3 | 3 | 3 | 3 | 3 | 3.5 | 3.5 | 3.5 | 3.5 | 3.5 | 3.5 | 4 | 4 | 4 | 4 | 4.5 | 4.5 | 4.5 | 4.5 | 4.5 | 4.5 | 4.5 | 23 | |
| Scala Yellow ^w / Blue Wings | ELI | 3 | 3 | 3 | 3 | 3 | 3 | 3 | 3 | 3 | 3 | 3 | 3 | 3 | 3 | 3 | 3 | 3 | 3.5 | 3.5 | 3.5 | 4 | 4 | 4 | 4 | 24 | | |
| Clear Sky Orange | S&G | 3 | 3 | 3 | 3 | 3 | 3 | 3 | 3 | 3 | 3 | 3 | 3 | 3.5 | 3.5 | 3.5 | 3.5 | 3.5 | 3.5 | 3 | 3 | 3 | 3 | 3 | 3.5 | 3.5 | 24 | |
| Fama Orange | BEN | 3 | 3 | 3 | 3 | 3 | 3 | 3 | 3 | 3 | 3 | 3 | 3 | 3.5 | 3.5 | 3.5 | 3 | 3 | 3 | 3 | 3 | 3 | 3 | 3.5 | 4 | 4 | 24 | |
| Rally Orange | PA | 3 | 3 | 3 | 3 | 3 | 3 | 3 | 3 | 3 | 3- | 3 | 3 | 3- | 3 | 3 | 3 | 3 | 3 | 3 | 3 | 3 | 3.5 | 3.5 | 3.5 | 4 | 22 | |
| Universal Plus Orange | GOLD | 3 | 3 | 3 | 3 | 3 | 3 | 3 | 3 | 3 | 3 | 3 | 3 | 3 | 3 | 3 | 3 | 3 | 3 | 3 | 3 | 3 | 3 | 3 | 3 | 3 | 24 | |
| Vernale Apricot | ELI | 3 | 2.5 | 2.5 | 2.5 | 3 | 2.5 | 2.5 | 2.5 | 2.5 | 3- | 3- | 3- | 3 | 3 | 3 | 3 | 3 | 3 | 3 | 3 | 3 | 3 | 3 | 3 | 3.5 | 3.5 | 21 |
| Rally Orange ^w / Blotch | PA | 3- | 3 | 3 | 3 | 3 | 3- | 3- | 3- | 3- | 3- | 3- | 3- | 3- | 3- | 3 | 3 | 3 | 3 | 3 | 3 | 3 | 3.5 | 3.5 | 4.5 | 4.5 | 14 | |
| Vernale Orange ^w / Blotch | ELI | 3 | 2.5 | 2.5 | 2.5 | 3 | 2.5 | 2.5 | 2.5 | 3- | 3- | 3- | 3- | 3- | 3- | 3- | 3 | 3 | 3 | 3 | 3 | 3 | 3 | 3.5 | 4 | 4 | 17 | |
| Universal Plus Orange Blotch | GOLD | 3- | 3 | 3 | 3 | 3 | 3 | 3 | 3 | 3 | 3- | 3 | 3 | 3 | 3 | 3 | 3 | 3 | 3 | 3 | 3 | 3 | 3 | 3 | 3 | 3 | 22 | |
| Bingo Light Rose | PA | 3 | 3 | 3 | 3 | 3 | 3 | 3 | 3 | 3 | 3 | 3 | 3 | 3 | 3.5 | 3.5 | 3.5 | 3.5 | 3.5 | 3.5 | 4 | 4 | 4 | 4.5 | 4.5 | 4.5 | 24 | |
| Universal Plus Rose | GOLD | 3 | 3 | 3 | 3 | 3 | 2.5 | 2.5 | 2.5 | 2.5 | 3 | 3 | 3 | 3 | 3 | 3 | 3 | 3 | 3 | 3 | 3 | 3 | 3 | 3 | 3 | 3 | 24 | |
| Universal Plus Rose Blotch | GOLD | 3 | 3 | 3 | 3 | 3 | 3 | 3.5 | 3.5 | 3.5 | 3.5 | 3.5 | 3.5 | 3.5 | 3.5 | 3.5 | 4 | 4 | 4 | 4 | 4 | 4 | 4.5 | 4.5 | 4.5 | 4.5 | 24 | |
| Bingo Dark Rose ^w / Blotch | PA | 3 | 3 | 3 | 3 | 3 | 3 | 3 | 3 | 3.5 | 3.5 | 3.5 | 3.5 | 3.5 | 3.5 | 4 | 4 | 3.5 | 3 | 3 | 3 | 3 | 3 | 3.5 | 3.5 | 3.5 | 24 | |
| Accord Rose Blotch | GOLD | 3 | 3 | 3 | 3 | 3 | 3 | 3 | 3 | 3 | 3 | 3 | 3 | 3 | 3 | 3 | 3.5 | 3.5 | 3.5 | 3.5 | 3.5 | 3.5 | 3.5 | 3.5 | 4 | 4 | 24 | |

| | | | | | | | | | | | | | | | | | |
|------|---------|---------|--------|---------|---------|---------|--------|---------|---------|---------|--------|--------|---------|---------|--------|--------|---------|
| Week | 47 | 48 | 49 | 50 | 51 | 52 | 1 | 2 | 3 | 4 | 5 | 6 | 7 | 8 | 9 | 10 | 11 |
| Date | 23 Nov. | 30 Nov. | 7 Dec. | 14 Dec. | 21 Dec. | 28 Dec. | 4 Jan. | 11 Jan. | 18 Jan. | 25 Jan. | 1 Feb. | 8 Feb. | 15 Feb. | 22 Feb. | 1 Mar. | 8 Mar. | 15 Mar. |

| | | | | | | | |
|------|---------|---------|--------|---------|---------|---------|-------|
| Week | 12 | 13 | 14 | 15 | 16 | 17 | 18 |
| Date | 22 Mar. | 29 Mar. | 5 Apr. | 12 Apr. | 19 Apr. | 26 Apr. | 3 May |

Table 3, Continued.

| Cultivar | Source | Weekly ratings (week of the year) and degree of flowering | | | | | | | | | | | | | | | | | | Wks in bloom | | | | | | | | |
|--|--------|---|-----|----|-----|----|----|---|----|-----|-----|-----|-----|-----|-----|-----|-----|-----|-----|--------------|-----|-----|-----|-----|-----|-----|-----|----|
| | | 47 | 48 | 49 | 50 | 51 | 52 | 1 | 2 | 3 | 4 | 5 | 6 | 7 | 8 | 9 | 10 | 11 | 12 | | 13 | 14 | 15 | 16 | 17 | 18 | | |
| Scala Carmine Rose ^w / Blotch | ELI | 3 | 3 | 3 | 3 | 3 | 3 | 3 | 3 | 3 | 3 | 3 | 3 | 3 | 3.5 | 3 | 3 | 3.5 | 3.5 | 3.5 | 3.5 | 3.5 | 4 | 4 | 24 | | | |
| Vernale Carmine Rose ^w / Blotch | ELI | 3 | 3 | 3 | 3 | 3 | 3 | 3 | 3 | 3 | 3 | 3 | 3 | 3 | 3 | 3 | 3 | 3 | 3 | 3 | 3 | 3 | 3 | 3 | 24 | | | |
| Universal Plus Red | GOLD | 3 | 2.5 | 3 | 3 | 3 | 3 | 3 | 3 | 3 | 3 | 3 | 3 | 3 | 3 | 3 | 3 | 3 | 3 | 3.5 | 4 | 4 | 3.5 | 3.5 | 24 | | | |
| Clear Sky Red | S&G | 3 | 2.5 | 3 | 2.5 | 3 | 3 | 3 | 3 | 3 | 3 | 3 | 3 | 3 | 3 | 3 | 3 | 3 | 3 | 3.5 | 3.5 | 3.5 | 3.5 | 3.5 | 24 | | | |
| Skyline Red | S&G | 3- | 3 | 3 | 3 | 3 | 3 | 3 | 3 | 3 | 3 | 3.5 | 3.5 | 3.5 | 3.5 | 4 | 4 | 4 | 4 | 4 | 4 | 4 | 4 | 4.5 | 4 | 23 | | |
| Delta Carmine ^w / Blotch | S&G | 3 | 3 | 3 | 3 | 3 | 3 | 3 | 3 | 3 | 3 | 3 | 3 | 3.5 | 3.5 | 3.5 | 3.5 | 3.5 | 3.5 | 3.5 | 3.5 | 3.5 | 3.5 | 3.5 | 24 | | | |
| Universal Plus Red Blotch | GOLD | 3 | 3 | 3 | 3 | 3 | 3 | 3 | 3 | 3 | 3 | 3 | 3 | 3 | 3 | 3.5 | 3.5 | 3.5 | 3.5 | 3.5 | 3.5 | 3.5 | 4 | 4 | 3.5 | 3.5 | 24 | |
| Universal Plus Red Wing | GOLD | 3 | 3 | 3 | 3 | 3 | 3 | 3 | 3 | 3 | 3 | 3 | 3 | 3 | 3 | 3.5 | 3.5 | 3.5 | 3.5 | 3.5 | 3.5 | 3.5 | 3.5 | 3.5 | 3.5 | 24 | | |
| Fama Red | BEN | 3 | 3 | 3 | 3 | 3 | 3 | 3 | 3 | 3 | 3 | 3 | 3 | 3.5 | 3.5 | 3.5 | 3.5 | 3 | 3 | 3 | 3 | 3 | 3 | 3 | 3.5 | 24 | | |
| Bingo Red ^w / Blotch | PA | 3 | 3 | 3 | 3 | 3 | 3- | 3 | 3- | 3- | 3 | 3 | 3- | 3- | 3- | 3 | 3 | 3 | 3 | 3 | 3 | 3 | 3 | 3.5 | 3.5 | 3.5 | 18 | |
| Accord Red Blotch | GOLD | 3 | 3 | 3 | 3 | 3 | 3 | 3 | 3 | 3 | 3 | 3 | 3 | 3- | 3 | 3 | 3 | 3 | 3 | 3 | 3 | 3 | 3 | 3.5 | 3.5 | 23 | | |
| Universal Plus Light Blue | GOLD | 3 | 3 | 3 | 3 | 3 | 3 | 3 | 3 | 3 | 3 | 3 | 3 | 3 | 3.5 | 3.5 | 3.5 | 3.5 | 3.5 | 4 | 4 | 4 | 4.5 | 4.5 | 4.5 | 24 | | |
| Fama Silver Blue | BEN | 3 | 3 | 3 | 3 | 3 | 3 | 3 | 3 | 3 | 3 | 3 | 3 | 3 | 3.5 | 3.5 | 3.5 | 3.5 | 3.5 | 4 | 4 | 4 | 4 | 4 | 4.5 | 4.5 | 24 | |
| Exp. Denim Blue | PA | 3 | 3 | 3 | 3 | 3 | 3 | 3 | 3 | 3 | 3.5 | 3.5 | 3.5 | 3.5 | 3.5 | 3.5 | 3.5 | 4 | 4 | 4.5 | 4.5 | 4.5 | 5 | 5 | 5 | 5 | 24 | |
| Rally True Blue | PA | 3 | 3 | 3 | 3 | 3 | 3 | 3 | 3 | 3 | 3.5 | 3.5 | 3.5 | 3.5 | 3.5 | 3.5 | 3.5 | 4 | 4 | 4.5 | 4.5 | 4.5 | 4.5 | 5 | 5 | 5 | 24 | |
| Fama True Blue | BEN | 3 | 3 | 3 | 3 | 3 | 3 | 3 | 3 | 3 | 3 | 3.5 | 3.5 | 3.5 | 3.5 | 3.5 | 3.5 | 3.5 | 4 | 4 | 4 | 4.5 | 5 | 5 | 5 | 5 | 24 | |
| 94BP09 | AAS | 3 | 3 | 3 | 3 | 3 | 3 | 3 | 3 | 3.5 | 3.5 | 3.5 | 3.5 | 3.5 | 3.5 | 3.5 | 3.5 | 4 | 4 | 4 | 4 | 4.5 | 5 | 5 | 5 | 5 | 24 | |
| Accord Clear Blue | GOLD | 3- | 3 | 3 | 3 | 3 | 3 | 3 | 3 | 3.5 | 3.5 | 3.5 | 3.5 | 3.5 | 4 | 4 | 4 | 4 | 4 | 4 | 4 | 4 | 4 | 4.5 | 5 | 5 | 23 | |
| Universal Plus True Blue | GOLD | 3 | 3 | 3 | 3 | 3 | 3 | 3 | 3 | 3 | 3.5 | 3.5 | 3.5 | 3.5 | 3.5 | 3.5 | 3.5 | 3.5 | 4 | 4 | 4.5 | 4.5 | 4.5 | 4.5 | 5 | 5 | 24 | |
| Delta True Blue | S&G | 3 | 3 | 3 | 3 | 3 | 3 | 3 | 3 | 3.5 | 3.5 | 3.5 | 3 | 3 | 3 | 3.5 | 3.5 | 3.5 | 3.5 | 3.5 | 3.5 | 3.5 | 3.5 | 3.5 | 4 | 4 | 24 | |
| Scala Mid Blue | ELI | 3 | 3 | 3 | 3 | 3 | 3 | 3 | 3 | 3 | 3 | 3 | 3 | 3 | 3 | 3 | 3 | 3 | 3 | 3 | 3 | 3 | 3 | 3.5 | 4 | 4 | 24 | |
| Rally Light Blue ^w / Blotch | PA | 3 | 3 | 3 | 3 | 3 | 3 | 3 | 3 | 3 | 3 | 3 | 3 | 3 | 3.5 | 3.5 | 3.5 | 3.5 | 3.5 | 4 | 4 | 4.5 | 4.5 | 4.5 | 4.5 | 5 | 24 | |
| Delta Blue ^w / Blotch | S&G | 3 | 3 | 3 | 3 | 3 | 3 | 3 | 3 | 3 | 3 | 3 | 3 | 3 | 3.5 | 3.5 | 3.5 | 3.5 | 4 | 4 | 4 | 4.5 | 4.5 | 4.5 | 5 | 5 | 24 | |
| Skyline Blue | S&G | 3- | 3 | 3 | 3 | 3 | 3 | 3 | 3 | 3 | 3 | 3 | 3 | 3.5 | 3.5 | 3.5 | 3.5 | 3.5 | 4 | 4 | 4 | 4 | 4 | 4 | 4.5 | 4.5 | 23 | |
| Fama Dark-Eyed Blue | BEN | 3 | 3 | 3 | 3 | 3 | 3 | 3 | 3 | 3 | 3 | 3 | 3 | 3 | 3.5 | 3.5 | 3.5 | 3.5 | 3.5 | 4 | 4 | 4 | 4.5 | 4.5 | 4.5 | 5 | 24 | |
| Rally Deep Blue ^w / Blotch | PA | 3 | 3 | 3 | 3 | 3 | 3 | 3 | 3 | 3 | 3 | 3 | 3 | 3 | 3 | 3.5 | 3.5 | 3.5 | 3.5 | 4 | 4 | 4 | 4 | 4 | 4.5 | 4.5 | 3.5 | 24 |
| Accord Blue Blotch | GOLD | 3 | 3 | 3 | 3 | 3 | 3 | 3 | 3 | 3 | 3 | 3 | 3 | 3 | 3 | 3.5 | 3.5 | 4 | 3.5 | 3.5 | 3.5 | 3.5 | 3.5 | 4 | 4 | 4 | 24 | |
| Regal Blue | AAS | 3 | 3 | 3 | 3 | 3 | 3 | 3 | 3 | 3 | 3 | 3 | 3 | 3 | 3.5 | 3.5 | 3.5 | 3.5 | 3.5 | 3.5 | 4 | 4 | 4 | 4 | 4 | 4 | 24 | |

| | | | | | | | | | | | | | | | | | |
|------|---------|---------|--------|---------|---------|---------|--------|---------|---------|---------|--------|--------|---------|---------|--------|--------|---------|
| Week | 47 | 48 | 49 | 50 | 51 | 52 | 1 | 2 | 3 | 4 | 5 | 6 | 7 | 8 | 9 | 10 | 11 |
| Date | 23 Nov. | 30 Nov. | 7 Dec. | 14 Dec. | 21 Dec. | 28 Dec. | 4 Jan. | 11 Jan. | 18 Jan. | 25 Jan. | 1 Feb. | 8 Feb. | 15 Feb. | 22 Feb. | 1 Mar. | 8 Mar. | 15 Mar. |

| | | | | | | | |
|------|---------|---------|--------|---------|---------|---------|-------|
| Week | 12 | 13 | 14 | 15 | 16 | 17 | 18 |
| Date | 22 Mar. | 29 Mar. | 5 Apr. | 12 Apr. | 19 Apr. | 26 Apr. | 3 May |

Table 3, Continued.

| Cultivar | Source | Weekly ratings (week of the year) and degree of flowering | | | | | | | | | | | | | | | | | | Wks in bloom | | | | | | |
|-----------------------------------|--------|---|------|------|-----|-----|-----|-----|------|------|------|------|------|------|------|-----|------|------|------|--------------|------|-----|------|-----|-----|----|
| | | 47 | 48 | 49 | 50 | 51 | 52 | 1 | 2 | 3 | 4 | 5 | 6 | 7 | 8 | 9 | 10 | 11 | 12 | | 13 | 14 | 15 | 16 | 17 | 18 |
| Futura Blue ^W / Blotch | AAS | 3 | 3 | 3 | 3 | 3 | 3 | 3 | 3 | 3 | 3 | 3 | 3 | 3.5 | 3.5 | 3.5 | 3 | 3 | 3 | 3 | 3.5 | 3.5 | 4 | 4 | 4 | 24 |
| Universal Plus Blue Blotch | GOLD | 3 | 3 | 3 | 3 | 3 | 3 | 3 | 3 | 3 | 3 | 3 | 3.5 | 3.5 | 3.5 | 3.5 | 3.5 | 4 | 3.5 | 3.5 | 3 | 3 | 3 | 3 | 24 | |
| Bingo Blue ^W / Blotch | PA | 3 | 3 | 3 | 3 | 3 | 3 | 3 | 3 | 3 | 3 | 3 | 3 | 3 | 3 | 3 | 3 | 3 | 3 | 3.5 | 3.5 | 3.5 | 3.5 | 4 | 24 | |
| Giant Forerunner Blue | AAS | 3 | 3 | 3 | 3 | 3 | 3 | 3 | 3 | 3 | 3 | 3 | 3.5 | 3.5 | 3 | 3 | 3 | 3 | 3 | 3 | 3 | 3.5 | 3.5 | 3.5 | 24 | |
| Rally Lilac Cap | PA | 3 | 3 | 3 | 3 | 3 | 3 | 3.5 | 3.5 | 3.5 | 3.5 | 3.5 | 3.5 | 4 | 4 | 4.5 | 4.5 | 4.5 | 4.5 | 4.5 | 4.5 | 4.5 | 5 | 5 | 4 | 24 |
| Exp. Midnight | PA | 3 | 3 | 3 | 3 | 3 | 3 | 3 | 3 | 3 | 3 | 3 | 3 | 3.5 | 3.5 | 4 | 4 | 4 | 4 | 4 | 4.5 | 4.5 | 5 | 5 | 4 | 24 |
| Clear Sky Purple | S&G | 3 | 3 | 3 | 3 | 3 | 3 | 3 | 3 | 3 | 3 | 3.5 | 3.5 | 3.5 | 3.5 | 4 | 4 | 4.5 | 4.5 | 4 | 4 | 4 | 4 | 4 | 3.5 | 24 |
| Bingo Deep Purple | PA | 3 | 3 | 3 | 3 | 3 | 3 | 3 | 3 | 3 | 3 | 3 | 3- | 3 | 3 | 3 | 3 | 3 | 3 | 3 | 3.5 | 4 | 4 | 3.5 | 3 | 23 |
| Fama See-Me | BEN | 3 | 3 | 3 | 3 | 3 | 3 | 3 | 3 | 3.5 | 3.5 | 3.5 | 3.5 | 4 | 4 | 4 | 4 | 4 | 4.5 | 5 | 5 | 5 | 5 | 4 | 3.5 | 24 |
| Universal Plus Violet Blotch | GOLD | 3 | 3 | 3 | 3 | 3 | 3 | 3 | 3 | 3 | 3 | 3.5 | 3.5 | 4 | 4 | 4.5 | 4.5 | 4.5 | 4.5 | 4.5 | 4.5 | 4.5 | 4.5 | 3.5 | 3 | 24 |
| Delta Violet/Face | S&G | 3 | 3 | 3 | 3 | 3 | 3 | 3 | 3 | 3 | 3 | 3 | 3 | 3.5 | 3.5 | 3 | 3 | 3.5 | 3.5 | 3.5 | 4 | 4 | 4 | 4 | 3.5 | 24 |
| Exp. Beaconsfield | PA | 3 | 3 | 3 | 3 | 3 | 3 | 3.5 | 3.5 | 4 | 4 | 4 | 4 | 4 | 4 | 4.5 | 4.5 | 4.5 | 5 | 5 | 5 | 5 | 5 | 4.5 | 3.5 | 24 |
| Universal Plus Beaconsfield | GOLD | 3 | 3 | 3 | 3.5 | 3.5 | 3.5 | 3.5 | 3.5 | 4 | 4 | 4 | 4 | 4 | 4 | 4 | 4 | 4 | 3.5 | 3.5 | 4 | 4 | 4 | 4 | 4 | 24 |
| Skyline White/Purple Wing | S&G | 3- | 3- | 3 | 3 | 3 | 3 | 3 | 3- | 3.5 | 3 | 3 | 3 | 3.5 | 3.5 | 3.5 | 3.5 | 3.5 | 4 | 4 | 4 | 4 | 4 | 4 | 4 | 21 |
| Delta Pure Colours Formula Mix | S&G | 3 | 3 | 3 | 3 | 3 | 3 | 3 | 3 | 3 | 3 | 3 | 3 | 3.5 | 3.5 | 3.5 | 3.5 | 3.5 | 3.5 | 3.5 | 3.5 | 3.5 | 4 | 4 | 3.5 | 24 |
| Universal Plus Clear Mixture | GOLD | 3- | 3 | 3 | 3 | 3 | 3 | 3 | 3 | 3 | 3 | 3 | 3 | 3 | 3 | 3.5 | 3.5 | 3.5 | 3.5 | 3.5 | 3.5 | 3.5 | 3.5 | 3.5 | 3.5 | 23 |
| Skyline Mix | S&G | 3 | 3 | 3 | 3 | 3 | 3 | 3 | 3 | 3 | 3 | 3 | 3 | 3.5 | 3.5 | 3.5 | 3.5 | 3.5 | 4 | 4 | 4 | 4 | 4.5 | 3.5 | 3 | 24 |
| Universal Plus Blotch Mixture | GOLD | 3 | 3 | 3 | 3 | 3 | 3 | 3 | 3 | 3 | 3 | 3 | 3 | 3.5 | 3.5 | 4 | 4 | 4 | 4 | 4 | 4 | 3.5 | 3.5 | 3.5 | 3 | 24 |
| Accord Mixture | GOLD | 3 | 3 | 3 | 3 | 3 | 3 | 3 | 3.5 | 3.5 | 3.5 | 3.5 | 3.5 | 3.5 | 3.5 | 4 | 4 | 4 | 4 | 4 | 4 | 4 | 4 | 4 | 4 | 24 |
| All Sky Formula Mix | S&G | 3 | 3 | 3 | 3 | 3 | 3 | 3 | 3 | 3 | 3 | 3 | 3 | 3 | 3 | 3.5 | 3.5 | 3.5 | 3.5 | 3.5 | 3.5 | 3.5 | 3.5 | 3.5 | 3.5 | 24 |
| Universal Plus Mixture | GOLD | 3 | 3 | 3 | 3 | 3 | 3 | 3 | 3 | 3 | 3 | 3 | 3 | 3 | 3 | 3.5 | 3.5 | 3.5 | 3.5 | 3.5 | 3.5 | 3.5 | 3.5 | 3.5 | 3.5 | 24 |
| Delta Formula Mix | S&G | 3 | 3 | 3 | 3 | 3 | 3 | 3 | 3.5 | 3.5 | 3.5 | 3.5 | 3.5 | 3.5 | 3.5 | 3.5 | 3.5 | 3.5 | 3 | 3 | 3 | 3 | 3 | 3 | 3 | 24 |
| Liberty Mixture | GOLD | 3- | 2.5- | 2.5- | 3- | 3- | 3 | 3- | 2.5- | 2.5- | 2.5- | 2.5- | 2.5- | 2.5- | 2.5- | 2- | 2- | 2- | 2- | 1.5- | 1.5- | 2- | 2.5- | 3 | 3.5 | 3 |
| Bells Mixture | GOLD | 3- | 3- | 3- | 3- | 3- | 3- | 3- | 3- | 3- | 3- | 2.5- | 2.5- | 2.5- | 2.5- | 2- | 1.5- | 1.5- | 1.5- | 1.5- | 1.5- | 1.5 | 2 | 3 | 3.5 | 4 |
| Chimes Mixture | GOLD | 3- | 3- | 3- | 3- | 3- | 3- | 3- | 2.5- | 2.5- | 2- | 2- | 2- | 2- | 1.5- | 1- | 1- | 1- | 1- | 1- | 1- | 1- | 2 | 3 | 3.5 | 3 |
| Alpine Summer | AAS | 3 | 3- | 3 | 3 | 3 | 3 | 3.5 | 3.5 | 4 | 4 | 4 | 4 | 4 | 4 | 4.5 | 4.5 | 4.5 | 5 | 5 | 5 | 5 | 5 | 5 | 4.5 | 23 |
| Jewel Purple ^W / Face | AAS | 3 | 3 | 3 | 3 | 3 | 3 | 3 | 3 | 3.5 | 4 | 4 | 4 | 4 | 4 | 4.5 | 4.5 | 4.5 | 4.5 | 5 | 5 | 5 | 5 | 5 | 4 | 24 |
| 94BP18 | AAS | 3 | 3 | 3 | 3 | 3 | 3 | 3 | 3 | 3 | 3 | 3.5 | 3.5 | 3.5 | 3.5 | 4 | 4 | 4.5 | 4.5 | 4.5 | 4.5 | 4.5 | 4.5 | 3.5 | 2.5 | 24 |

| | | | | | | | | | | | | | | | | | |
|------|---------|---------|--------|---------|---------|---------|--------|---------|---------|---------|--------|--------|---------|---------|--------|--------|---------|
| Week | 47 | 48 | 49 | 50 | 51 | 52 | 1 | 2 | 3 | 4 | 5 | 6 | 7 | 8 | 9 | 10 | 11 |
| Date | 23 Nov. | 30 Nov. | 7 Dec. | 14 Dec. | 21 Dec. | 28 Dec. | 4 Jan. | 11 Jan. | 18 Jan. | 25 Jan. | 1 Feb. | 8 Feb. | 15 Feb. | 22 Feb. | 1 Mar. | 8 Mar. | 15 Mar. |

| | | | | | | | |
|------|---------|---------|--------|---------|---------|---------|-------|
| Week | 12 | 13 | 14 | 15 | 16 | 17 | 18 |
| Date | 22 Mar. | 29 Mar. | 5 Apr. | 12 Apr. | 19 Apr. | 26 Apr. | 3 May |

Table 3, Continued.

| Cultivar | Source | Weekly ratings (week of the year) and degree of flowering | | | | | | | | | | | | | | | | | | Wks in bloom | | | | | | | |
|-------------------|--------|---|-----|----|----|----|----|-----|-----|-----|-----|-----|-----|-----|-----|-----|-----|-----|-----|--------------|-----|-----|-----|-----|-----|-----|----|
| | | 47 | 48 | 49 | 50 | 51 | 52 | 1 | 2 | 3 | 4 | 5 | 6 | 7 | 8 | 9 | 10 | 11 | 12 | | 13 | 14 | 15 | 16 | 17 | 18 | |
| Velour Blue | CSP | 3 | 3 | 3 | 3 | 3 | 3 | 3.5 | 3.5 | 3.5 | 3.5 | 3.5 | 3.5 | 3.5 | 3.5 | 3.5 | 3.5 | 3.5 | 3.5 | 3.5 | 3.5 | 4 | 4 | 4 | 4 | 24 | |
| Cuty | AAS | 3 | 2.5 | 3 | 3 | 3 | 3 | 3 | 3 | 3 | 3.5 | 4 | 4 | 4 | 4 | 4 | 4 | 4 | 3.5 | 3.5 | 3.5 | 3.5 | 3.5 | 3 | 3 | 24 | |
| Pretty | AAS | 3- | 3- | 3- | 3 | 3 | 3 | 3 | 3 | 3.5 | 3.5 | 3.5 | 3.5 | 3.5 | 3.5 | 4 | 4 | 4 | 4 | 4 | 3.5 | 3.5 | 3 | 2.5 | 2.5 | 21 | |
| Maroon Picotee | AAS | 3- | 3 | 3 | 3 | 3 | 3 | 3 | 3 | 3 | 3.5 | 3.5 | 3.5 | 3.5 | 3.5 | 4 | 4 | 4 | 3.5 | 4 | 3.5 | 3 | 3 | 2.5 | 2.5 | 23 | |
| Mini Pansy Purple | CSP | 3 | 3 | 3 | 3 | 3 | 3 | 3 | 3 | 3 | 3 | 3 | 3 | 3 | 3 | 3 | 3 | 3 | 3 | 3 | 3 | 3 | 4 | 4 | 4 | 4.5 | 24 |

| | | | | | | | | | | | | | | | | | |
|------|---------|---------|--------|---------|---------|---------|--------|---------|---------|---------|--------|--------|---------|---------|--------|--------|---------|
| Week | 47 | 48 | 49 | 50 | 51 | 52 | 1 | 2 | 3 | 4 | 5 | 6 | 7 | 8 | 9 | 10 | 11 |
| Date | 23 Nov. | 30 Nov. | 7 Dec. | 14 Dec. | 21 Dec. | 28 Dec. | 4 Jan. | 11 Jan. | 18 Jan. | 25 Jan. | 1 Feb. | 8 Feb. | 15 Feb. | 22 Feb. | 1 Mar. | 8 Mar. | 15 Mar. |

| | | | | | | | |
|------|---------|---------|--------|---------|---------|---------|-------|
| Week | 12 | 13 | 14 | 15 | 16 | 17 | 18 |
| Date | 22 Mar. | 29 Mar. | 5 Apr. | 12 Apr. | 19 Apr. | 26 Apr. | 3 May |

