

The Betsy-Jeff Penn 4-H Educational Center is located in Rockingham County, near Reidsville, NC, just 20 minutes from Greensboro.

*The tranquil setting is ideal for conferences and retreats for a variety of groups such as organizational retreats and corporate groups.*

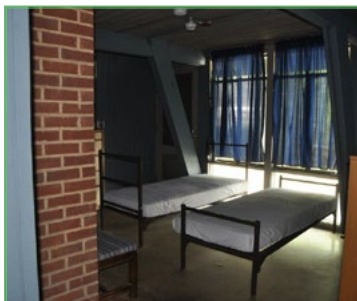
## Facilities

Our Conference and Retreat Facilities in North Carolina include:

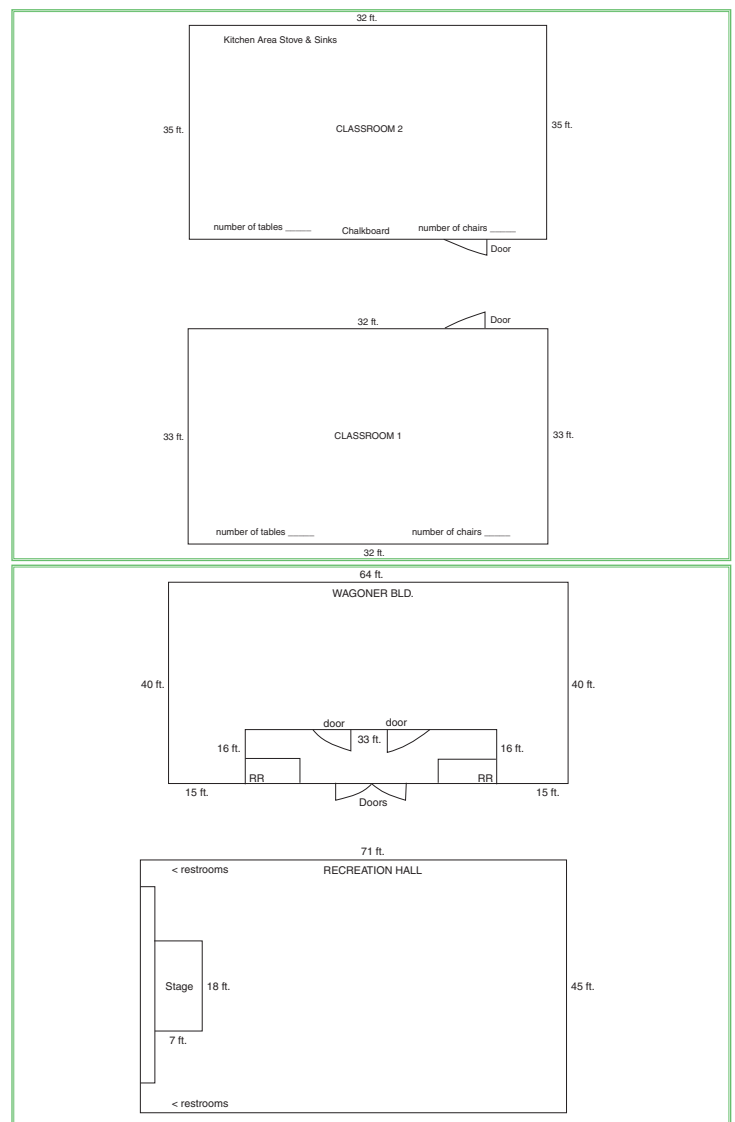
- 2 classroom spaces
- A large multipurpose meeting room
- A spacious recreation hall
- And all the necessary accoutrements, from tables and chairs to audio-visual equipment.

We also have:

- 8 heated cabins with modest community sleeping spaces
- And bathroom space that accommodates up to 26 individuals
- Total of 208 beds on site



Our **family-style meals** in the dining hall create a sense of community amongst those on the retreat. Betsy-Jeff Penn's kitchen staff will gladly satisfy the culinary desires of the group, allowing participants to carry on their own programs and business without concerns over minor details.



## Pricing for NC State Extension\*

### Conference Programs 2018 Rates

2 nights with 4 meals	\$70 per person
2 nights with 5 meals	\$80 to \$95 per person
Meal prices are :	<ul style="list-style-type: none"> <li>• \$6 for breakfast</li> <li>• \$7 for lunch</li> <li>• \$8 for dinner</li> </ul>
Additional nights	\$21 per person
Minimum fee to rent BJP for the weekend	\$3500
Deposit	\$300

\*Rates apply only to NC State Extension groups.



## Services

Penn has a wide variety of Piedmont ecosystems and wildlife. Wetlands, streams, forests, and a 22-acre lake provide opportunities for the study of aquatic biology, water quality, and forest ecology and wildlife habitats.



Penn provides the perfect oasis from the daily hustle and bustle of life. Conveniently located near Greensboro and the Triangle, Penn allows for an easy hour drive to escape to the tranquility of Rockingham County. Penn is situated on 250 acres of serene landscape and allows for easy access to the Upper Piedmont Research Station. Your retreat participants can spend their time enjoying nature while exploring the grounds and use the easily accessible facilities to have a meaningful retreat with your Extension group.



## Tourism/Additional Lodging

**Betsy-Jeff Penn 4-H Educational Center**

Rockingham County

Caswell County

Guilford County

Additional lodging	
<b>A</b> <a href="#">Holiday Inn &amp; Days Inn, Reidsville</a>	<b>B</b> <a href="#">Hampton Inn, Eden</a>
Things to do & areas of interest	
<b>C</b> <a href="#">Mayo River State Park</a>	<b>D</b> <a href="#">Lake Reidsville Park</a>
<b>C</b> <a href="#">Mayodan Mountain Bike Trail</a>	<a href="#">Dan River, Haw River, and Smith River Access Points</a>
<b>C</b> <a href="#">Piedmont Distillers</a>	<b>C</b> <a href="#">Autumn Creek Vineyards</a>
<b>A</b> <a href="#">Penn House</a>	



**NC STATE**

EXTENSION