



Guava Root-Knot Nematode (GRKN)

microscopic worms in the soil that infect sweet potatoes and form knots or galls on the roots

Ag Alert!

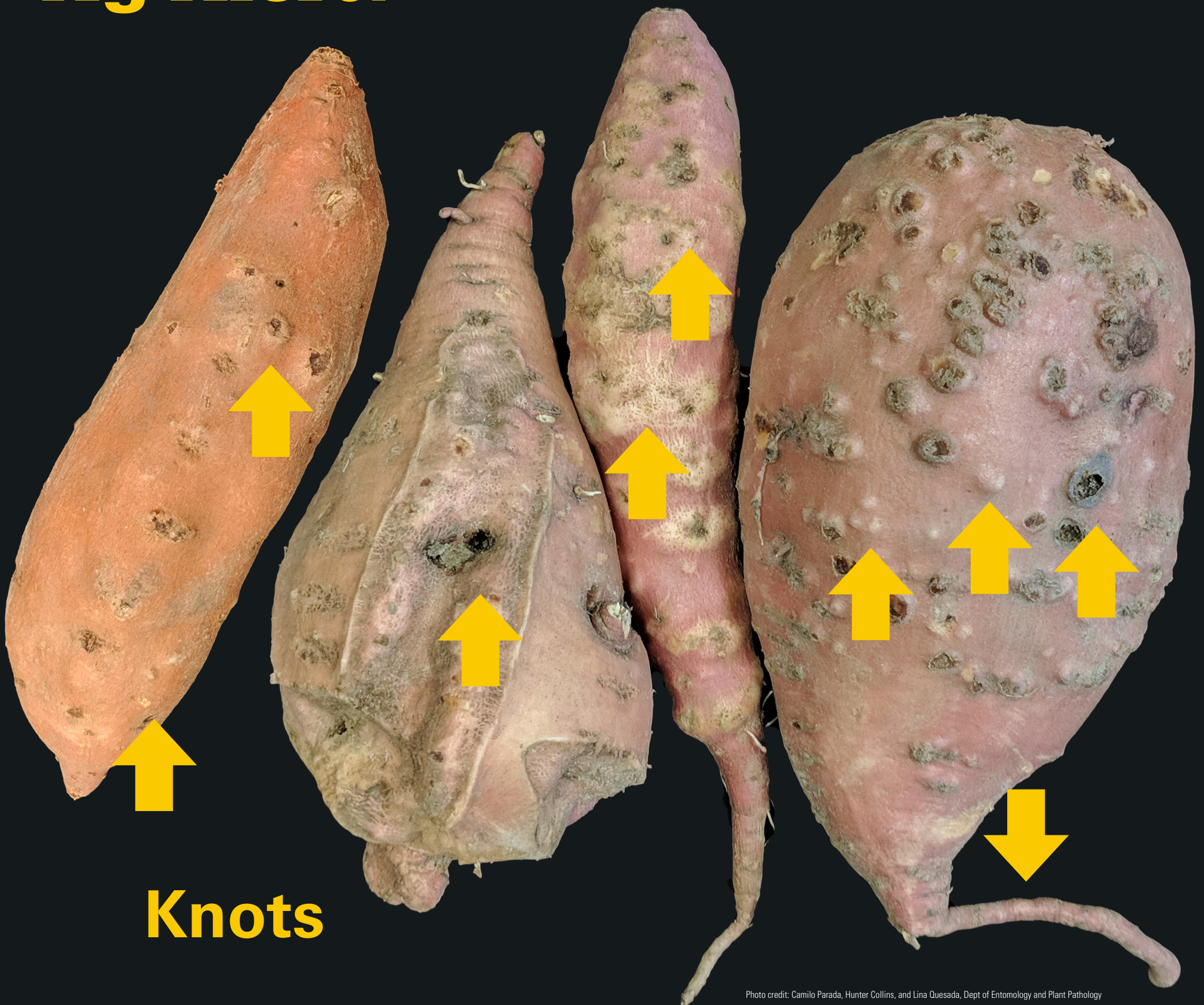


Photo credit: Camilo Parada, Hunter Collins, and Lina Quesada, Dept of Entomology and Plant Pathology

1

STOP
the packing
line

2

CONTACT
your supervisor
immediately

3

REMOVE
entire lot,
isolate in secure
location

4

CALL
NCDA&CS
to arrange
inspection

NC STATE

EXTENSION