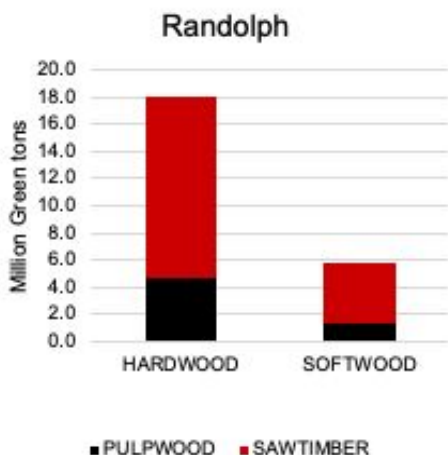




Timberland⁸ & Reserved Forestland⁹ by Ownership

Ownership	NC (Acres)	Randolph (Acres)
Public Timberland	2,565,308	29,306
Private Timberland	15,482,714	258,300
Reserved Forestland	636,455	6,070
Total Timberland & Forestland	18,684,477	293,676
All Land	31,531,452	505,631
% Timberland	57%	57%
% Reserved	2%	1%

Timber Inventory



Timber Growth vs. Harvest¹⁰ Volumes

Volume Estimate	NC	Randolph
	Million Green tons	
Growth	57.30	0.79
Harvest	31.80	0.16
Growth:Harvest Ratio	1.80	5.09

2020 Forestry Contributions

Randolph County, NC



Randolph County has about 258,300 acres of privately owned timberland.



Landowners in this county received an estimated stumpage harvest value of \$9.3 million.



The forest sector in this county had a total economic contribution of approximately \$1,560 million in industry output to the county's economy.



The forest sector in this county supported 7,990 total jobs with a payroll of about \$385 million.

Economic Contribution¹ of the Forest Sector

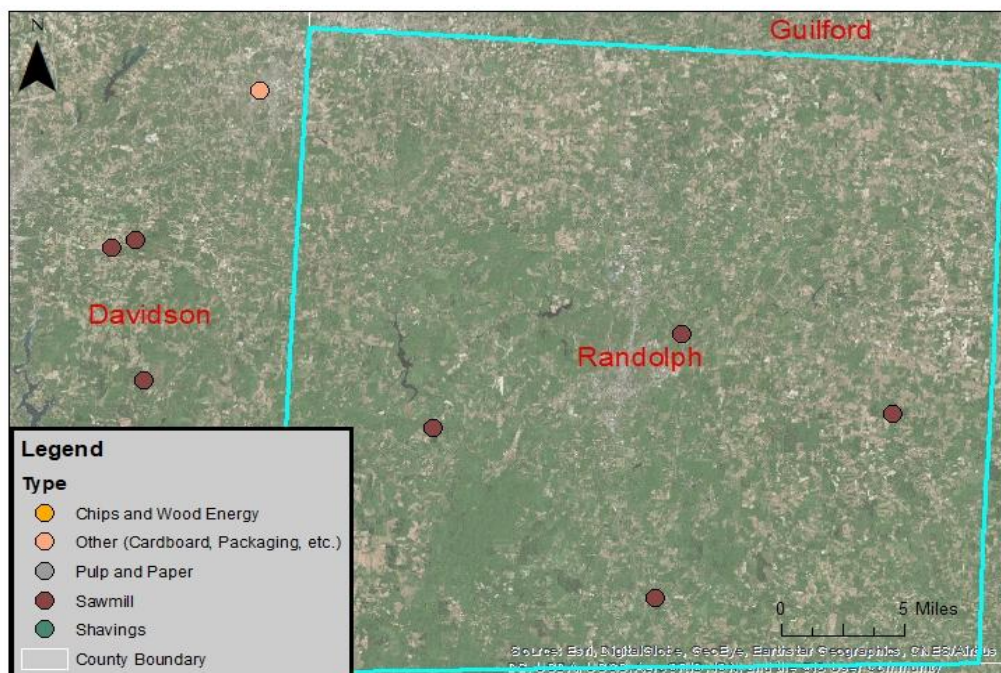
	Employment ² (jobs)	Labor Income ³ (million \$)	Value Added ⁴ (million \$)	Industry Output ⁵ (million \$)
Direct Impact⁶				
Forestry	4	0.25	0.28	0.34
Logging	72	3.11	3.17	5.42
Primary solid wood products	197	11.10	17.75	64.42
Secondary solid wood products	5,354	246.71	288.67	1,001.50
Primary paper & paperboard products	-	-	-	-
Secondary paper & paperboard products	379	36.12	46.10	189.93
Total	6,005	297	356	1,262
Total Impact⁷				
Forestry	5	0.27	0.32	0.43
Logging	96	3.90	4.31	7.45
Primary solid wood products	342	17.60	27.74	84.53
Secondary solid wood products	6,936	317.25	406.39	1,243.72
Primary paper & paperboard products	-	-	-	-
Secondary paper & paperboard products	611	45.89	63.06	223.52
Total	7,990	385	502	1,560

A map showing local forest product mills nearby the county

Data Source:

NC Forest Service: Buyers of Timber in North Carolina from the North Carolina Forest Service. Found at: http://www.ncforestservice.gov/Managing_your_forest/timber_buyers.htm

NC Counties Shapefile: NC Dept of Transportation. Found at <http://www.nconemap.com/>



Footnotes:

¹Economic contribution numbers, based on multi-industry contribution analysis, are reported in 2020 dollars. IMPLAN's built-in industry contribution analysis method is used. Sectors included: 15, 16, 19 (partial), 132, 134, 134, 135, 136, 137, 138, 139, 140, 142, 143, 144, 145, 146, 147, 148, 149, 150, 151, 365, 366, 367, 370, 371, and 373. 2019 IMPLAN data are obtained from IMPLAN (<https://implan.com/>).

²Employment includes both full- and part-time jobs.

³Labor income includes all forms of employment income, including employee compensation (wages and benefits) and proprietor income.

⁴Value added is the difference between industry output and the cost of intermediate inputs. It consists of compensation of employees, taxes on production and imports less subsidies, and gross operating surplus.

⁵Industry output is the total annual value of production by an industry.

⁶Direct contribution is a series of production changes or expenditures made by producers/consumers as a result of an activity.

⁷Total contribution is the sum of direct, indirect, and induced contribution effects generated by the sector.

⁸Timberlands are a subset of forestlands that are not reserved by law and potentially available for commercial timber harvest. Federal, state and local governments own public timberlands. Non-industrial private landowners (i.e., farm forests, family forests), forest industry, or other corporate businesses (i.e., timber investment management organizations) own private timberlands. 2020 Data are retrieved from USDA Forest Service Forest Inventory and Analysis (<https://apps.fs.usda.gov/Evaluator/evaluator.jsp>).

⁹Reserved forests, as used here, are for public lands where the law does not permit commercial timber production.

¹⁰Harvests include removals during timber harvests and removals for other reasons such as land conversion.

Contacts for Forest Resources in the County

NC Cooperative Extension Randolph County Center

1003 South Fayetteville Street
Asheboro, NC 27203

Phone: (336) 318-6000

Fax: (336) 318-6011

Website: <http://randolph.ces.ncsu.edu/>

NC Forest Service Randolph County Ranger Station

2755 Old Cox Road

Asheboro, NC 27203

Phone: (336) 879-1773

Fax: (336) 879-1875

Email: randolph.ncfs@ncagr.gov

Website: <http://www.ncforestservice.gov/contacts/Randolph.htm>

Prepared by:

Stephanie Chizmar, Ph.D., Postdoctoral Researcher

Suzanne Teague, Undergraduate Researcher

Rajan Parajuli, Ph.D., Extension Specialist

Robert Bardon, Ph.D., Extension Specialist

Extension Forestry
College of Natural Resources

<https://forestry.ces.ncsu.edu/>

NC STATE

EXTENSION

This work is supported by Renewable Resources Extension Act Funding from the USDA National Institute of Food and Agriculture.

North Carolina State University and North Carolina A&T State University commit themselves to positive action to secure equal opportunity regardless of race, color, creed, national origin, religion, sex, age, veteran status or disability. In addition, the two Universities welcome all persons without regard to sexual orientation.