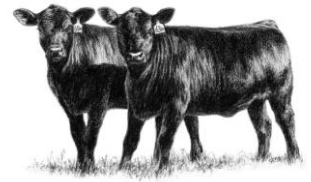


**Randolph County 4-H Livestock Show
Junior Beef Cattle Show
Friday, August 1st, 2014
Scarlett Farms 2368 NC Hwy. 42 S., Asheboro, NC**



STEER SHOW 7:00pm

HEIFER SHOW immediately following the Steer Show

Check In/Weigh-In: 5:30pm-6:30pm



RULES AND REGULATIONS FOR STEER SHOW

1. Open to youth exhibitors age 5-19 (as of January 1st, 2014).
2. This show is open to 4-H and FFA Chapters.
3. Animals will be inspected upon check-in by a Veterinarian
4. Registration for STEER show is required by **July 18th, 2014.**
5. Exhibitors must have trained the animals from July 5th, 2014. Ownership by exhibitors is not required, but all animals must be under exhibitors care.
6. Steers can have two permanent teeth. All other teeth must be baby teeth and in place.
7. Steers must be halter broke and dehorned. Unruly animals, which may endanger the safety of the exhibitors, will be asked to leave the ring.
8. Each exhibitor is limited to two entries. If animals are in the same class, another participant must show the additional animal. Adults are not eligible to show.
9. Classes will be divided by steer weights (light, middle and heavy). A Grand and Reserve Champion will be selected from the class winners.
10. All animals must be tied when not accompanied by an exhibitor.
11. No wash facilities will be available, so we encourage you to have your animals ready to show.
12. All participants are automatically entered in their respective showmanship classes.

RULES AND REGULATIONS FOR HEIFER SHOW

1. Open to youth exhibitors age 5-19 (as of January 1st, 2014).
2. This show is open to 4-H and FFA Chapters.
3. Animals will be inspected upon check-in by a Veterinarian
4. Registration for HEIFER show is required by **July 18th, 2014.**
5. Exhibitors must have trained the animals from July 5th, 2014. Ownership by exhibitors is not required, but all animals must be under exhibitors care.
6. All breeds will be shown in one class. Classes will be divided based on age of heifer and will be announced on the day of the show.
7. Heifers must be halter broken.
8. Each exhibitor is limited to two entries. If animals are in the same class, another participant must show the additional animal. Adults are not eligible to show.
9. A Grand Champion and Reserve Champion heifer will be picked from the class winners.
10. All animals must be tied when not accompanied by an exhibitor.
11. No wash facilities will be available, so we encourage you to have your animals ready to show.
12. All participants are automatically entered in their respective showmanship classes.

Please send your entry forms by July 18th, 2014 to:

Randolph County Cooperative Extension
Attn: Jonathan Black
112 West Walker Ave.
Asheboro, NC 27203
Phone (336) 318-6000 Fax (336) 318-6011
Cell (336) 963-8680

Randolph County 4-H Livestock Show
Junior Beef Cattle Show
Friday, August 1st, 2014

Steer Show

	1 st	2 nd	3 rd	4 th	5 th	Participation
Light	\$30	\$25	\$20	\$15	\$10	\$5
Middle	\$30	\$25	\$20	\$15	\$10	\$5
Heavy	\$30	\$25	\$20	\$15	\$10	\$5

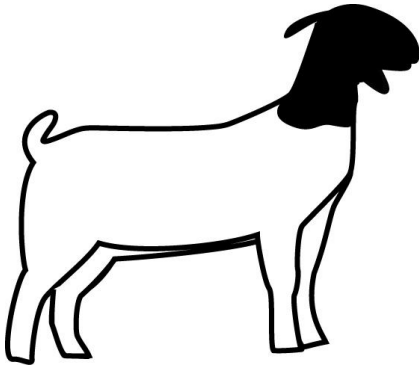
Grand Champion
Reserve Champion

Heifer Show

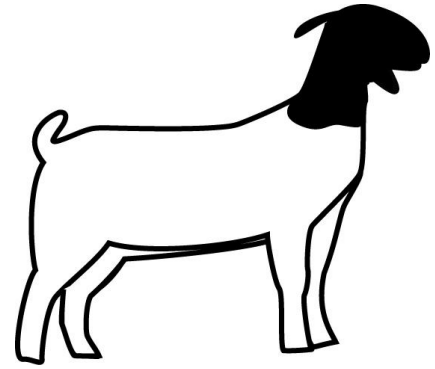
	1 st	2 nd	3 rd	4 th	5 th	Participation
March & April 2014	\$30	\$25	\$20	\$15	\$10	\$5
Jan. & February 2014	\$30	\$25	\$20	\$15	\$10	\$5
Nov. & December 2013	\$30	\$25	\$20	\$15	\$10	\$5
Sept. & October 2013	\$30	\$25	\$20	\$15	\$10	\$5
July & August 2013	\$30	\$25	\$20	\$15	\$10	\$5
May & June 2013	\$30	\$25	\$20	\$15	\$10	\$5
March & April 2013	\$30	\$25	\$20	\$15	\$10	\$5
Jan. & February 2013	\$30	\$25	\$20	\$15	\$10	\$5
Nov. & December 2012	\$30	\$25	\$20	\$15	\$10	\$5
Sept. & October 2012	\$30	\$25	\$20	\$15	\$10	\$5

Grand Champion
Reserve Champion

Randolph County 4-H Livestock Show



Randolph County 4-H Livestock Show Junior Meat Goat Show Saturday, August 2nd, 2014



WETHER SHOW begins at 10:00am
DOE SHOW immediately following Wether Show

Check-In/Weigh-In Time 8:00am-9:00am

RULES AND REGULATIONS FOR MEAT GOAT SHOW

1. Open to youth exhibitors age 5-19 (as of January 1st, 2014).
2. This show is open to 4-H and FFA Chapters.
3. Animals will be inspected upon check-in by a Veterinarian
4. Registration for GOAT show is required by **July 18th, 2014**.
5. Exhibitors must have trained the animals from July 5th, 2014. Ownership by exhibitors is not required, but all animals must be under exhibitors care.
6. All goats must meet NCDA Scrapie regulations. Those animals that do not will have to leave the show grounds. Market goat classes (wethers) will be divided by weight as evenly as possible.
7. Classes arranged at the discretion of the show officials. A Grand & Reserve Champion will be selected from the class winners.
8. Each participant is limited to two entries (2 does and/or 2 wethers). If animals are in the same class, another participant must show the additional animal. Adults are not eligible to show.
9. All animals must be tied when not accompanied by an exhibitor.
10. No wash facilities will be available, so we encourage you to have your animals ready to show.
11. All participants are automatically entered in their respective showmanship classes.

Market Classes (wethers only)

* Number of classes will depend on number of goats entered *

	1 st	2 nd	3 rd	4 th	5 th	Participation
Light	\$30	\$25	\$20	\$15	\$10	\$5
Middle	\$30	\$25	\$20	\$15	\$10	\$5
Heavy	\$30	\$25	\$20	\$15	\$10	\$5

Grand Champion
Reserve Champion

Doe Classes

	1 st	2 nd	3 rd	4 th	5 th	Participation
Sr. Does (Born on or before Sept 8, 2013)	\$30	\$25	\$20	\$15	\$10	\$5
Jr. Int. Does (Born Sept 9, 12 - Feb 28, 2014)	\$30	\$25	\$20	\$15	\$10	\$5
Jr. Does (Born on or after March 1, 2014)	\$30	\$25	\$20	\$15	\$10	\$5

Grand Champion
Reserve Champion

Randolph County 4-H Livestock Show

Showmanship

August 1st and 2nd, 2014

RULES & REGULATIONS FOR SHOWMANSHIP CLASSES

Will be held at conclusion of each species show.

1. Exhibitors are automatically entered in their Showmanship classes.
2. Exhibitor age and class entry will be determined by their age as of January 1st, 2014.
3. Classes will be divided into: Junior (ages 9-10), Intermediate (ages 11-13), Senior (ages 14-19) and Cloverbuds (ages 8 and under).
4. Judging will be based solely on showmanship.
5. Pee wee exhibitors must be accompanied by an experienced exhibitor or parent and will receive ribbons
6. Cloverbuds will not be placed, but will receive participation prize & ribbon.
7. Steers are not eligible for points in showmanship in the Farm Credit Showmanship Circuit.

Heifer or Steer Showmanship

Cloverbud (5-8 year olds) non-competitive \$5.00

	1 st	2 nd	3 rd	4 th	5 th	Participation
Junior (9-10)	\$30+ <i>Show Supply Bucket</i>	\$25	\$20	\$15	\$10	\$5
Intermediate (11-13)	\$30+ <i>Show Supply Bucket</i>	\$25	\$20	\$15	\$10	\$5
Senior (14-19)	\$30+ <i>Show Supply Bucket</i>	\$25	\$20	\$15	\$10	\$5

Meat Goat Showmanship

Pee wee (Under 5 years old) non-competitive

Cloverbud (5-8 year olds) non-competitive \$5.00

	1 st	2 nd	3 rd	4 th	5 th	Participation
Junior (9-10)	\$30+ <i>Show/Grooming Stand</i>	\$25	\$20	\$15	\$10	\$5
Intermediate (11-13)	\$30+ <i>Show/Grooming Stand</i>	\$25	\$20	\$15	\$10	\$5
Senior (14-19)	\$30+ <i>Show/Grooming Stand</i>	\$25	\$20	\$15	\$10	\$5

**There will be no pens or stalls, so please bring your own ties.
Restrooms will be available on-site and there will be food available for purchase.**

Randolph County 4-H Livestock Show

Distributed in furtherance of the acts of Congress of May 8 and June 30, 1914. North Carolina State University and North Carolina A&T State University commit themselves to positive action to secure equal opportunity regardless of race, color, creed, national origin, religion, sex, age, veteran status or disability. In addition, the two Universities welcome all persons without regard to sexual orientation. North Carolina State University, North Carolina A&T State University, U.S. Department of Agriculture, and local governments cooperating.