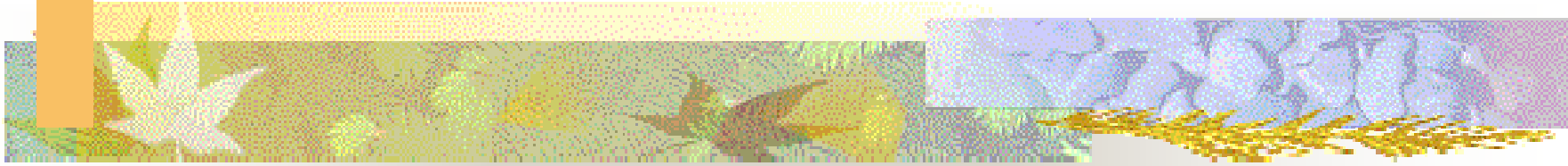
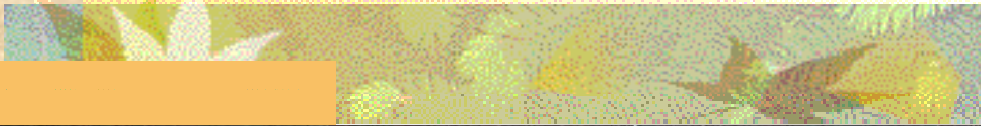


A Tale of Two Soils







Soil 1

- Color: 2.5YR 4/6
- Field Texture: Clay
- Moist Consistence: firm
- Wet Consistence: Moderately Plastic,
Moderately Sticky

Plasticity Class	Code			Criteria: Make a roll of soil 4 cm long
	Conv	PDP	NASIS	
Non-Plastic	(w) po	PO	PO	Will not form a 6 mm diameter roll, or if formed, can't support itself if held on end.
Slightly Plastic	(w) ps	SP	SP	6 mm diameter roll supports itself; 4 mm diameter roll does not.
Moderately Plastic ¹	(w) p	P	MP	4 mm diameter roll supports itself, 2 mm diameter roll does not.
Very Plastic	(w) vp	VP	VP	2 mm diameter roll supports its weight.

¹ Historically, the *Moderately Plastic* class is simply called *Plastic*.



(Squeeze in hand.)

oil flows through fingers with full pressure.

soil flows through fingers, most in the palm, after full pressure.

soil flows through fingers, some in palm, after full pressure.

soil flows through fingers, very little in palm, after gentle pressure.

Use a 3 cm block.

soil between thumb & forefinger.)

soil, the sample does not change to fluid, fingers do not skid, no ring occurs.

soil, the sample changes abruptly, fingers skid, soil smears, little or no soil remains on fingers.

soil, the sample changes abruptly, fingers skid, soil smears, some soil remains on fingers.

soil, the sample abruptly changes, fingers skid, soil smears and is sticky. water easily seen on fingers.

soil, primarily with Andic materials, but not all Andic materials.

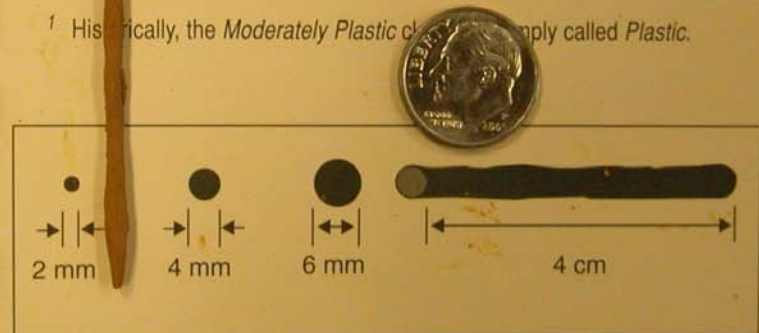
Very Sticky	(w) vs	VS	VS	Soil adheres firmly to both fingers, after pressure release. Soil stretches greatly upon separation of fingers.
-------------	--------	----	----	---

¹ Historically, the *Moderately Sticky* class was simply called *Sticky*.

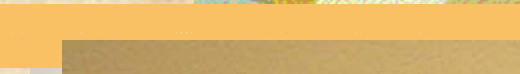
PLASTICITY - The degree to which "puddled" or reworked soil can be permanently deformed without rupturing. The evaluation is made by forming a roll (wire) of soil at a water content where the maximum plasticity is expressed.

Plasticity Class	Code			Criteria: Make a roll of soil 4 cm long
	Conv	PDP	NASIS	
Non-Plastic	(w) po	PO	PO	Will not form a 6 mm diameter roll, or if formed, can't support itself if held on end.
Slightly Plastic	(w) ps	SP	SP	6 mm diameter roll supports itself; 4 mm diameter roll does not.
Moderately Plastic	(w) p	P	MP	4 mm diameter roll supports itself, 2 mm diameter roll does not.
Very Plastic	(w) vp	VP	VP	2 mm diameter roll supports its weight.

¹ Historically, the *Moderately Plastic* class was simply called *Plastic*.



Roots / Pores
Soil
Water / Perm.
Chem. Res.



INJURY

Christina Rivenbark
ASSOCIATE
ATTORNEY AT LAW
www.ProtectYourLegalRights.com



Lab Data

- Particle Size:
 - 14% Sand
 - 16% Silt
 - 70% Clay
 - = Clay Texture



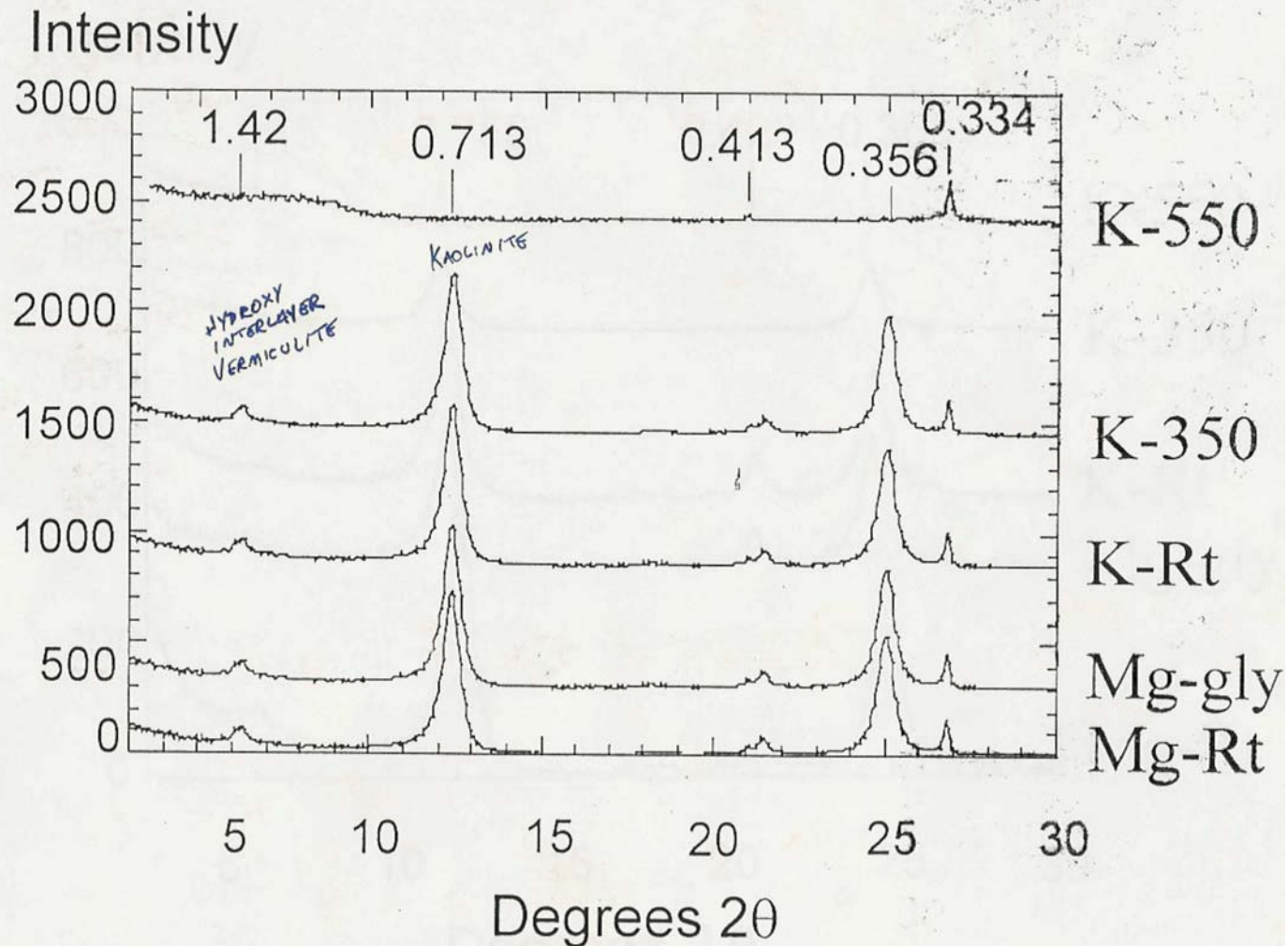
Lab Data (cont.)

- Atterberg Limits

- Lab 1: Liquid Limit: 73 Plasticity Index: 32
- Lab 2: Liquid Limit: 90 Plasticity Index: 55
- Remember it is considered expansive if the Liquid Limit is > 50 and the Plasticity Index is > 30 by current rules
- **UNSUITABLE BY ATTERBERG LIMITS**

- Apparent CEC: 13

X-Ray Diffraction





Soil 2

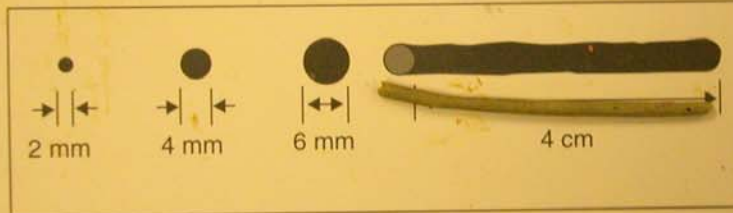
- Color: 10YR 6/2
- Field Texture: Clay
- Moist Consistence: very firm to extremely firm
- Wet Consistence: Very Plastic, Very Sticky

¹ Historically, the *Moderately Sticky* class was simply called *Sticky*.

PLASTICITY - The degree to which "puddled" or reworked soil can be permanently deformed without rupturing. The evaluation is made by forming a roll (wire) of soil at a water content where the maximum plasticity is expressed.

Plasticity Class	Code			Criteria: Make a roll of soil 4 cm long
	Conv	PDP	NASIS	
Non-Plastic	(w) po	PO	PO	Will not form a 6 mm diameter roll, or if formed, can't support itself if held on end.
Slightly Plastic	(w) ps	SP	SP	6 mm diameter roll supports itself; 4 mm diameter roll does not.
Moderately Plastic ¹	(w) p	P	MP	4 mm diameter roll supports itself, 2 mm diameter roll does not.
Very Plastic	(w) vp	VP	VP	2 mm diameter roll supports its weight.

¹ Historically, the *Moderately Plastic* class was simply called *Plastic*.



Very Sticky	(w) so	SO	SO	Little or no soil adheres to fingers, after release of pressure.
Slightly Sticky	(w) ss	SS	SS	Soil adheres to both fingers, after release of pressure. Soil stretches little on separation of fingers.
Moderately Sticky ¹	(w) s	S	MS	Soil adheres to both fingers, after release of pressure. Soil stretches some on separation of fingers.
Very Sticky	(w) vs	VS	VS	Soil adheres firmly to both fingers, after pressure release. Soil stretches greatly upon separation of fingers.

¹ Historically, the *Moderately Sticky* class was simply called *Sticky*.

PLASTICITY - The degree to which "puddled" or reworked soil can be permanently deformed without rupturing. The evaluation is made by forming a roll (wire) of soil at a water content where the maximum plasticity is expressed.

Plasticity Class	Code		Criteria:
	Conv	PDP	
Non-Plastic	(w) po	PO	Will not form a 6 mm diameter roll, or if formed, can't support itself if held on end.
Slightly Plastic	(w) ps	SP	6 mm diameter roll supports itself; 4 mm diameter roll does not.
Moderately Plastic ¹	(w) p	P	4 mm diameter roll supports itself; 2 mm diameter roll does not.
Very Plastic	(w) vp	VP	2 mm diameter roll supports its weight.

¹ Historically, the *Moderately Plastic* class was simply called *Plastic*.

