

Enhance the Benefits and Sustainable Management of Urban Forests

FM ACADEMY WEBINAR
OCTOBER 19, 2010

What did the Assessment show about **urban forestry** in North Carolina?

- Main purpose – identify areas where forest loss would impact urban and community forests.
 1. Describe urban forest conditions
 2. Identify benefits and services
 3. Highlight trends and issues of concern



What did the Assessment show about **urban forestry** in North Carolina?

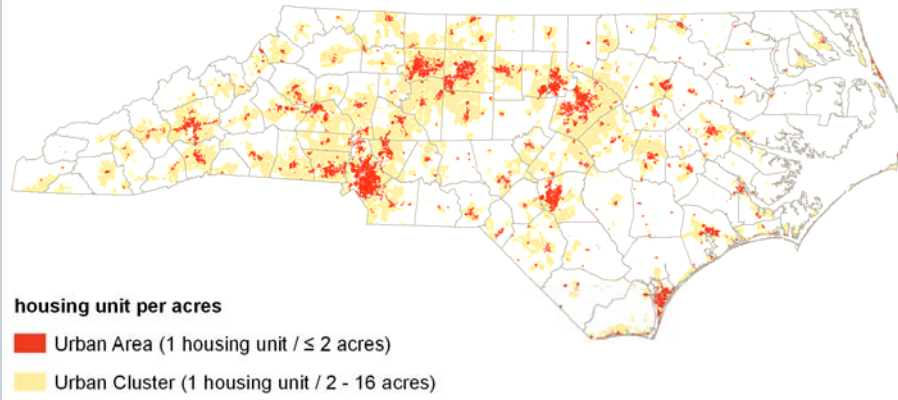
- **Issue 1:** Changing land use patterns threaten our urban forests.
- **Issue 2:** Natural catastrophic events threaten our urban forests.
- **Issue 3:** The rise in greenhouse gases impacts our urban forests.
- **Issue 4:** Urban forests are underutilized in energy conservation.
- **Issue 5:** Too few urban forest management programs are proactive.



Definitions and Assumptions

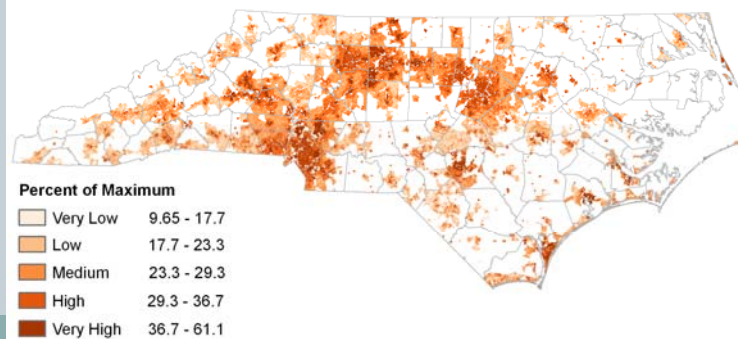
- **Urban forest** – the system of trees, and associated natural resources within city jurisdictional limits, and the surrounding area where the urban fringe is expanding into the rural landscape
- **Healthy urban forest** – an actively managed forest, able to withstand change, and consisting of an interconnected network of green space that conserves the natural ecosystem values and function
- **Priority areas** – relative designation given to areas as values of different components are summed

Definitions and Assumptions



Key Findings

- Using trees to improve air quality in the Piedmont Crescent is a priority
- Trees planted to reduce energy use is a priority in densely populated areas
- In the next 20 years cities will lose about 6% of their current forestland
- Natural disasters impact urban forests most in north central and southeast
- Only 1/3 of cities have at least 1 of 4 parts to urban forestry management



Key Findings to Enhance the Benefits and Sustainable Management of Urban Forests

Urban areas within the Piedmont Crescent are high-priority areas for tree conservation and planting efforts to improve local air quality.

- Reduce the **impacts** of land-use change and urbanization on forested landscapes in and around urban areas.
- Facilitate **strategic planting** and maintenance of community trees for public benefit.

Key Findings to Enhance the Benefits and Sustainable Management of Urban Forests

Communities of all sizes and in all regions of North Carolina could reduce energy consumption with strategic tree planting efforts; the more densely populated areas are higher priority areas.

- Facilitate **strategic planting** and maintenance of community trees for public benefit.

Key Findings to Enhance the Benefits and Sustainable Management of Urban Forests

North Carolina municipalities are predicted to lose approximately 6 percent of their current forestland between 2010 and 2030. A higher number of mountain communities will lose forestland; the greatest amount of change will occur in the piedmont.

- Reduce the **impacts** of land-use change and urbanization on forested landscapes in and around urban areas.
- Encourage **policies and guidelines** that sustain urban and community forests for the public's benefit.

Key Findings to Enhance the Benefits and Sustainable Management of Urban Forests

Natural disasters have the greatest impact on urban forests within the northern counties of the North Carolina piedmont and the southern counties of the North Carolina coastal plain.

- Facilitate strategic planting and **maintenance** of community trees for public benefit.
- Assist communities with establishing and **managing** their urban forests.

Key Findings to Enhance the Benefits and Sustainable Management of Urban Forests

Only one out of every three communities has at least one of the four performance measures that lead to an active urban forestry management program.

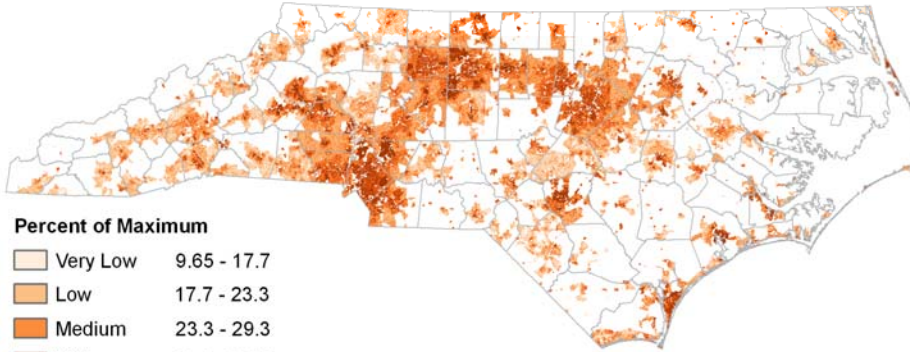
- | | |
|--------------------------------|--------------------------|
| 1. Advocacy Group (Tree Board) | One – 70 (≈11%) |
| 2. Public Tree Ordinance | Two – 66 (≈10%) |
| 3. Professional Staff | Three – 38 (≈6%) |
| 4. Management Plan | Four – 36 (≈5.5%) |

Key Findings to Enhance the Benefits and Sustainable Management of Urban Forests

Only one out of every three communities has at least one of the four performance measures that lead to an active urban forestry management program.

- Assist communities with establishing and **managing** their urban forests.
- Encourage **policies and guidelines** that sustain urban and community forests for the public's benefit.

Urban Forestry Priorities



Percent of Maximum

Very Low	9.65 - 17.7
Low	17.7 - 23.3
Medium	23.3 - 29.3
High	29.3 - 36.7
Very High	36.7 - 61.1

Questions?

Western Region Urban Forestry Specialist

Eric Muecke

(828) 438-3793 x 205

Eric.Muecke@ncdenr.gov

Eastern Region Urban Forestry Specialist

Alan Moore

(919) 857-4841

Alan.Moore@ncdenr.gov

