

Maintenance of Egg Coolers

Bill Frye
Express Refrigeration
910.417.8505
exprefrigeration@bellsouth.net
Rockingham, NC

Burch 9000-15E

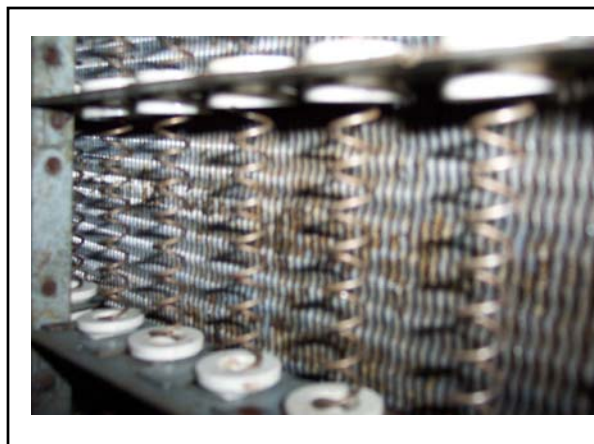


Problems

- Heating
- Cooling
- Humidity

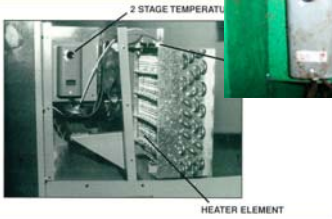
Problems

- Heating
 - Room thermostat getting blocked with debris
 - Room heater (strip heater) getting blocked with debris
 - creates hot spots on heater element
 - Safety sensor trips prematurely and motor runs hot
 - Contactor gets blocked with insects



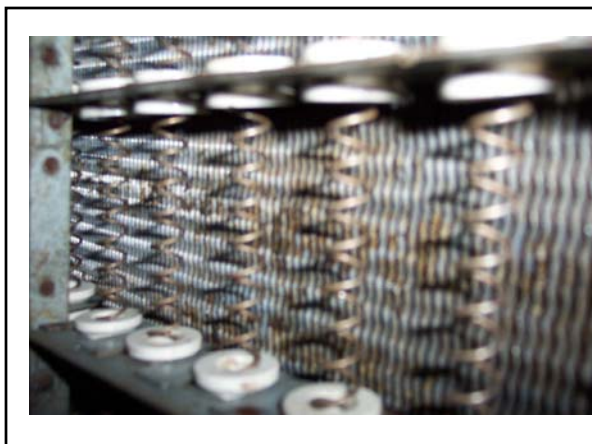
Debris collected on the heater

- Room thermostat collects debris and inaccurately senses temperature



Problems

- Heating
 - air infiltration
 - inadequate insulation
 - doors not closed
 - door not aligned
 - gaskets in poor condition
 - building material choice



Problems

- Cooling
 - fan motors run hot
 - evaporator stops picking up heat
 - causes coils to be iced over
 - compressor becomes flooded
 - damage compressor
 - condenser fails to remove the heat
 - pumping same heat back into cooler
 - eventually warp compressor valve



Problems

- Cooling
 - condensate drain gets stopped up
 - thermostat sensor becomes coated with debris
 - long run times = loss of humidity

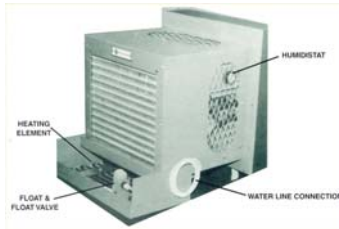


Problems

- Cooling
 - sizing of unit to room
 - insulation inadequate
 - doors not fitting or kept closed
 - egg cooler room(Burch unit) and egg collection room(air conditioner): not same objectives

Problems

- Humidity
 - long run times
 - water level too high
 - sediment from water collecting on heating element (that sits in pan) and pan
 - insulation & tightness of room
 - When not using humidifier clean and unplug



Future Considerations

- Orientation of egg room to sun