

“Optimizing Hatch to Fertile”  
Corydon Hatchery

---

---

---

---

---

---

---

---




---

---

---

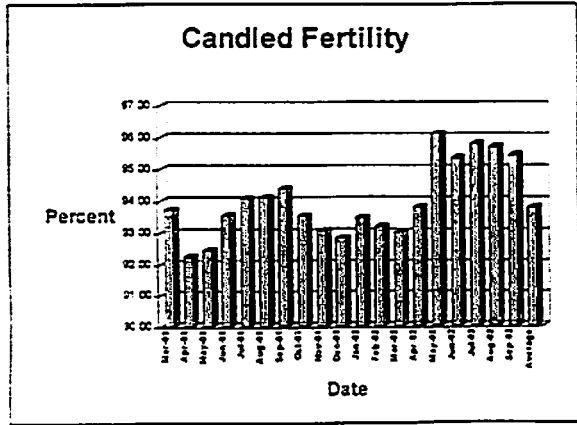
---

---

---

---

---




---

---

---

---

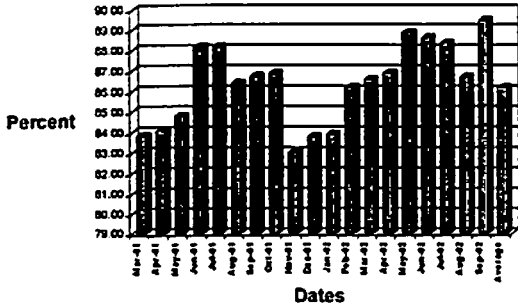
---

---

---

---

### Hatchability




---

---

---

---

---

---

---

---

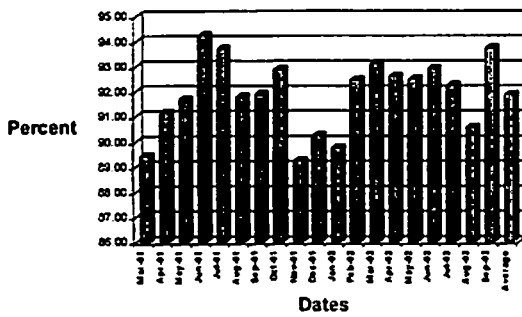
---

---

---

---

### Hatch to Fertile




---

---

---

---

---

---

---

---

---

---

---

---

### Optimize Hatch at Corydon

- Random Egg Sets
- Warmer Hallways and Setters
- 19 Day Transfers
- Warm Air-flow Through Setters
- No Humidity in Hatchers
- Sanitation
- Questions

---

---

---

---

---

---

---

---

---

---

---

---

### Random Egg Set

- Set eggs as they come off truck
- 27 week flock to 62 week, in same machine
- Reduce hot spots in machine
- Machine recover in 30 minutes or less

---

---

---

---

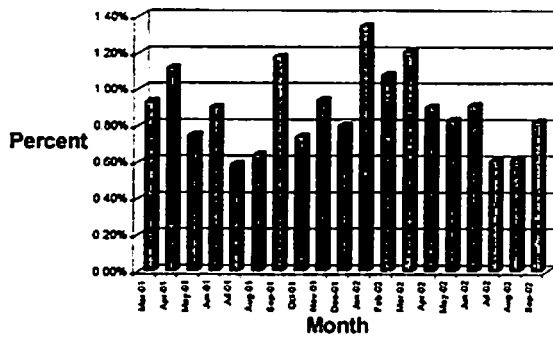
---

---

---

---

### 7 Day Mortality



---

---

---

---

---

---

---

---

### Warmer Setter Hallways

- 80° to 84° in winter
- 82° to 88° in summer
- Very little humidity

---

---

---

---

---

---

---

---

### Warmer Air-flow Through Setters

- Changed cooling cycle
- Peep holes on setter doors
- Move 200cfm of air

---

---

---

---

---

---

---

---

### 19 Day Transfers

- Bird size changed hatch days
- Egg flow into hatchery
- Increase hatch by 1% to 1½%

---

---

---

---

---

---

---

---

### No Humidity in Hatchers

- Slow down hatch
- Use natural humidity

---

---

---

---

---

---

---

---

## Sanitation

- Dry clean setters
- Assign each team member their own machines
- Fogging

---

---

---

---

---

---

---

---