

**1999**  
**NORTH CAROLINA STATE UNIVERSITY**  
**WINTER ANNUALS EVALUATION**

by  
**Douglas A. Bailey**  
**Floriculture Research and Extension**  
with technical assistance from  
**Bernadette Clark**



**Department of Horticultural Science**  
**North Carolina State University**  
**Raleigh, North Carolina**  
**Horticultural Research Series No. 136**

---

---

## **Table of Contents**

	Page
Introduction . . . . .	1
Explanation of Cultivar Evaluations . . . . .	3
Sources of Seeds . . . . .	4
N.C. State Leaders of the Pack Recipients . . . . .	4
NCSU Exceptional Performance Winners. . . . .	6
Series Ratings and Cultivar Performance. . . . .	6

---

---

## Introduction

Pansies have become the most popular annual for mid-autumn to late-spring color in the Southeast. Intensive breeding programs selecting for unique flower colors, large flower size, greater flower number, and temperature tolerance have led to many new and exciting cultivars to choose from for use in the landscape. With all the different cultivars available, selecting which ones to grow for customers (and which ones to plant in the landscape) can be a difficult task. During November 1998 through April 1999, we evaluated 155 pansy, 16 viola, 19 dianthus, 6 English daisies, 6 stock, 3 calendula, and 2 campanula varieties; and recorded how well they performed in the North Carolina landscape.

The trial gardens are located at the North Carolina State University Horticulture Field Laboratory, 4301 Beryl Road, in Raleigh. The site is located on lat. 35°47'N, long. 78°42'W with an elevation of 400 feet. Transplants grown in 2.5" × 2.2" containers were planted in the trial garden on 3 November 1998, and plant spacing in the trial was 10" × 12" (in-row × between-row spacing). Twelve plants of each entry were used to evaluate the performance of single-color cultivars, and 24 plants (two rows) were evaluated for each mix.

Weather during the winter and spring of 1999 was extremely mild. Temperatures in December (+8%), January (+10%), February (+5%) and April (+4%) were above normal (Table 1 and Figure 1).

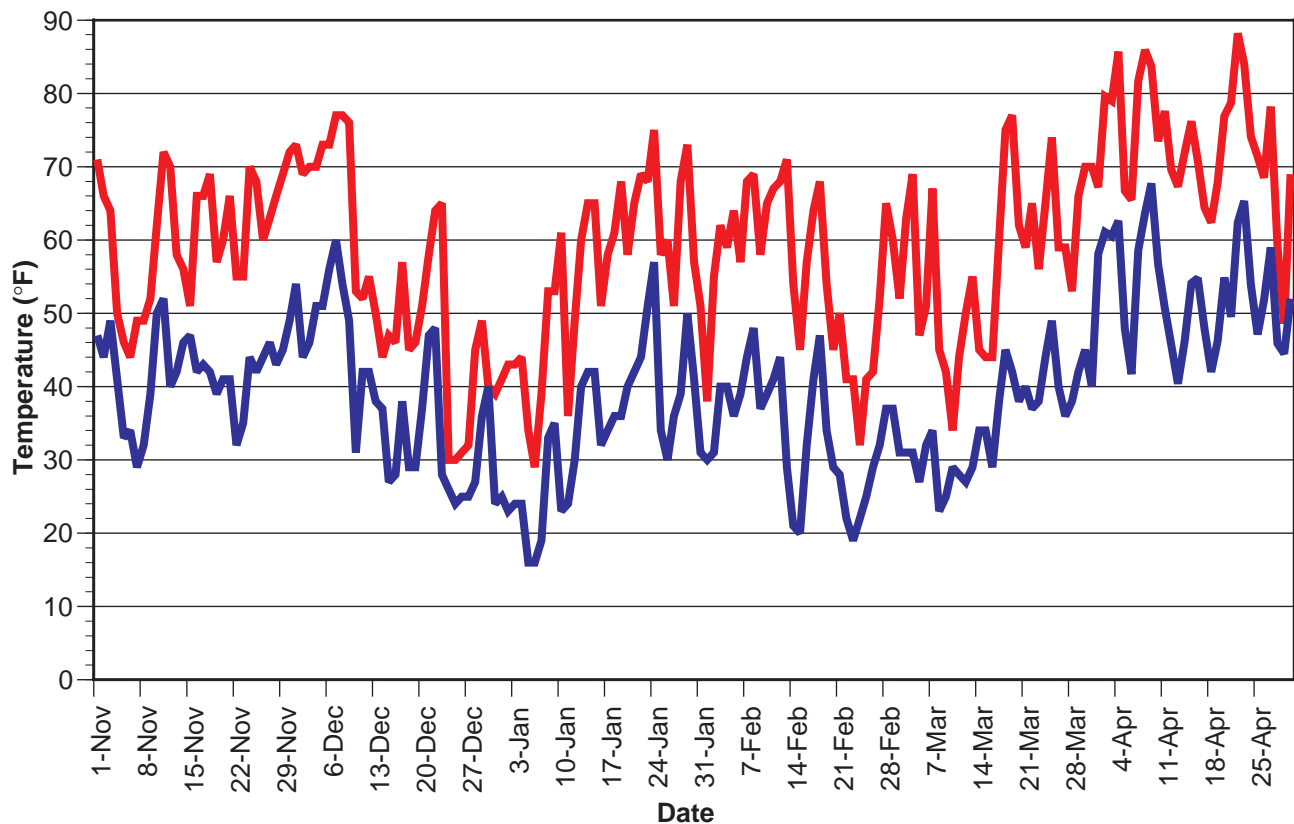


Figure 1. Daily minimum and maximum temperatures for Raleigh, North Carolina from 1 November 1998 to 30 April 1999.

**Table 1. Solar energy, temperature and precipitation for November 1998 through April 1999 and 30 year temperature and precipitation averages for Raleigh, N.C.**

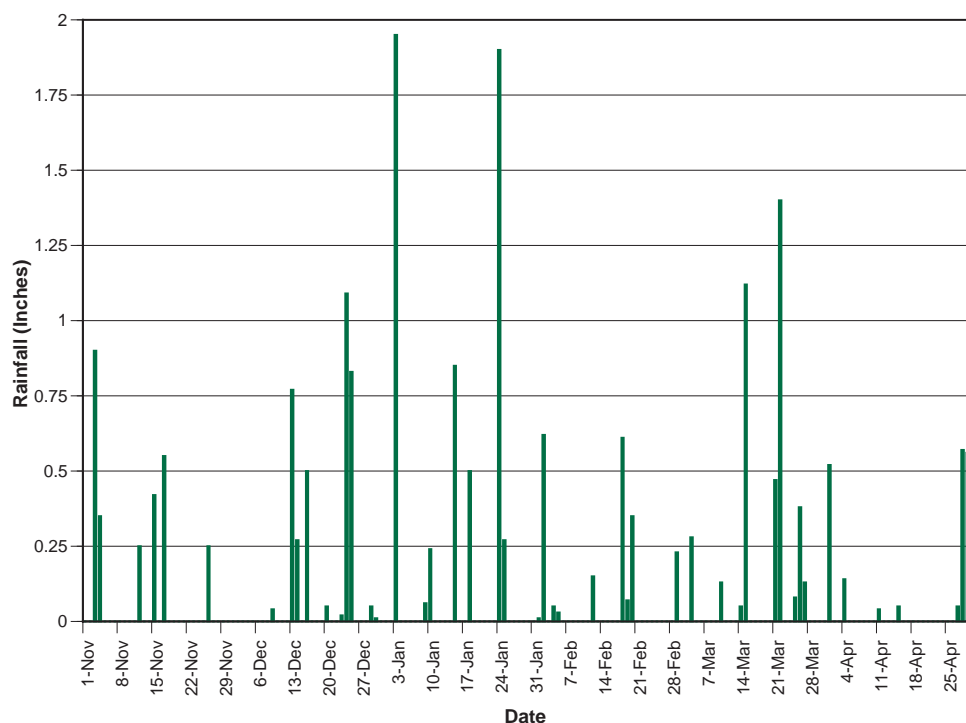
Month	Daily average solar radiation received (Langley/day)	Daily average temperature (°F) and percent change from 30 year avg	30 year average daily temperature (°F)	Monthly precipitation (inches) and percent change from 30 year avg	30 year average monthly precipitation (inches)
November	323	51.3 (-1%)	51.7	2.72 (-20%)	3.40
December	244	46.5 (+8%)	42.9	3.63 (+9%)	3.34
January	308	44.4 (+10%)	40.2	5.77 (+52%)	3.79
February	409	44.4 (+5%)	42.1	1.89 (-50%)	3.75
March	571	46.4 (-7%)	50.1	4.27 (+2%)	4.19
April	631	63.1 (+4%)	60.4	1.93 (-43%)	3.36

November (-1%) and March (-7%) were slightly below normal. Overall, the seasonal daily average temperature was 49.3, 3% above (1.4 °F above) the 30 year average of 47.9 °F for the same time period.

Precipitation fluctuated during the six month trial with three months well below average, two months with near average precipitation, and one month well above average (Table 1 and Figure 2). Overall, we received 20.2 inches of precipitation,

which is 7% below our 21.8 inch average precipitation for the six month period.

The fertilization program for the plants consisted of a preplant incorporation of 17-17-17 and monthly broadcasts of 15.5-0-0 through March. No pesticide applications were made during the evaluation in order to document major pest problems, and no major pest or disease problems were noted throughout the trials.



**Figure 2. Precipitation received from 1 November 1998 to 30 April 1999.**

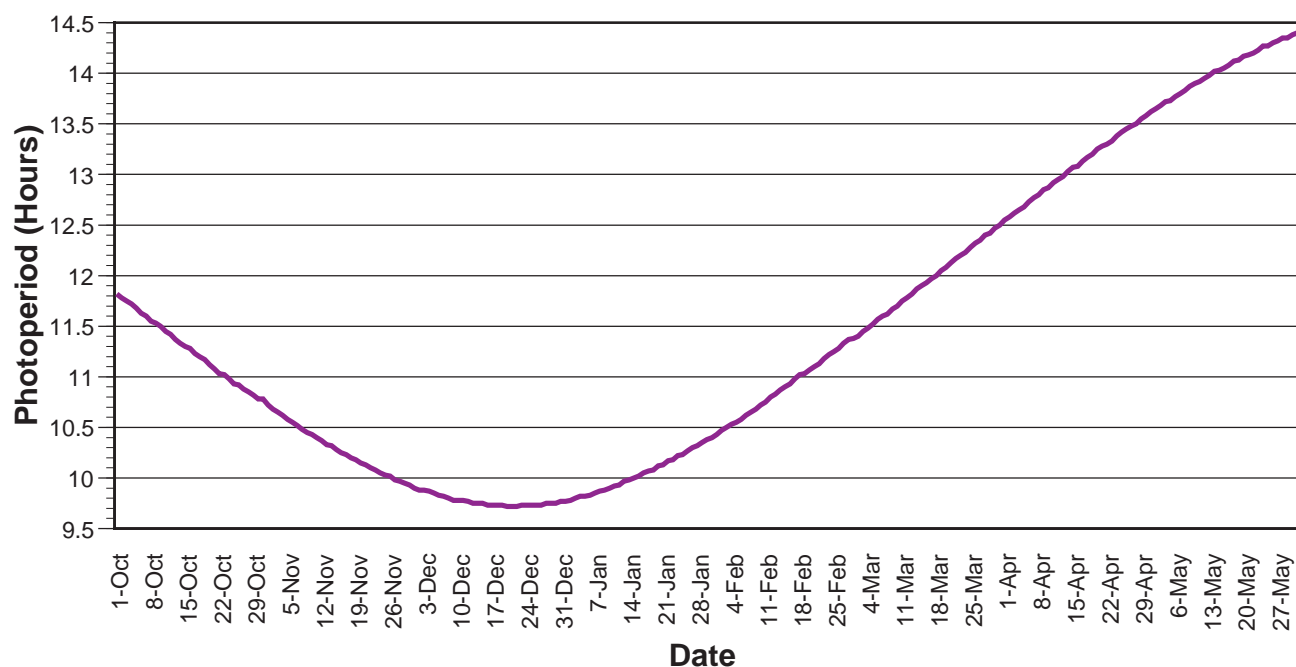


Figure 3. Photoperiod (sunrise to sunset) for Raleigh, N.C. from October 1 to May 31.

## Explanation of Cultivar Evaluations

Plants were given a visual rating by the same individual once a week for 22 weeks beginning 25 November 1998 (week 48 of 1998), three weeks after planting through 21 April (week 16 of 1999). Entries were evaluated for plant size, flower number, flower size, and attractiveness of flowers (consistency between plants in an entry, whether flowers are borne upright and easily visible, and attractiveness of flower color). The rating scale used ranged from 1 (very poor) to 5 (excellent), with 0.5 unit increments; a 0 rating indicates all plants of the cultivar died. Weekly ratings were averaged (season average rating column in Table 4) to provide an overall rating for the entire season. In addition to a numeric value indicating plant performance, the number of plants flowering per cultivar was noted each week. If less than 50% of the plants representing a cultivar were flowering during a given week, a dash (“-”) appears after the weekly evaluation score in Table 5. The final column in Table 5 indicates how many weeks (out of a possible 22 weeks) more than 50% of the plants were in bloom.

Cultivars in Tables 4 and 5 are listed by species in descending order for overall seasonal average rating by flower type (clear and blotched for pansies and violas) within each flower color (white, yellow, orange, rose, pink, red, blue, purple, and mixes). A cultivar that received a seasonal average rating of 3.2 or above is considered an excellent choice for full-season (November through April) color. A seasonal average rating of 2.6 or above indicates the cultivar is a satisfactory choice for full-season color. A seasonal rating below 2.6 indicates the cultivar may not be the best choice for our area.

Pansies are divided into pure-color flowers and multicolored flowers (see the color--type column in Table 4). Single-color flowering varieties are called “clear” whereas varieties having a distinct dark blue or black center on the flowers are called “blotched” or “faced” pansies. Some blotched pansies may have a different color blotch than the usual dark blue or black; if so, the blotch color will be noted in the comments column of Table 4. For example, 'Accord Yellow/Red Blotch' has a red blotch. Other multicolored pansies have white or light colored edges on their petals or have petals of

differing colors. Most of these two or three color pansies also have a dark face. The two major colors of multicolored pansies are indicated in Table 4 by a slash between the two colors listed in the color--type column. 'Ultima Beacon Blue' is a blotched pansy that is multicolored. Lavender and violet are the major petal colors outside of the darker blotched center.

## Sources of Seeds

**W**e are indebted to the following companies for supporting our 1997–98 winter trials. The companies are acknowledged in the ratings tables by the abbreviation that appears to the left of the company name:

- **AAS** All-America Selections, 1311 Butterfield Road, Suite 310, Downers Grove, IL 60515
- **AT** American Takii, Inc., 301 Natividad Road, Salinas, CA 93906
- **BALL** Ball Seed Co., P.O. Box 335, West Chicago, IL 60185
- **BEN** Ernst Benary of America, Inc. 1444 Larson Street, Sycamore, IL 60178
- **BG** Bodger Seeds Ltd., 1800 North Tyler Avenue, Lompoc, CA 91733-3618
- **FN** Floranova, 106 Third Street, San Juan Bautista, CA 95045-1362
- **GOLD** Goldsmith Seeds, Inc., P.O. Box 1349, Gilroy, CA 95020
- **GRS** Grimes Seeds and Plants, 11335 Concord-Hambden, Concord, OH 44077
- **NOV** Novartis Flower Seed, Inc., 5300 Katrine Avenue, Downers Grove, IL 60515
- **PA** Pan American Seed, 1017 W. Roosevelt Road, West Chicago, IL 60185
- **SAK** Sakata Seed America, Inc., P.O. Box 158, Wrens, GA 30833
- **WALL** Waller Flowerseed Company, 400 Obispo Street, Guadalupe, CA 93434

Appreciation is also expressed to **Fafard, Inc.**, P.O. Box 26, Anderson, SC 29622; and to the **North Carolina Commercial Flower Growers' Association** for their donations to and support of the 1998–1999 winter annual trial garden.

## N.C. State Leaders of the Pack

The following were selected in 1999 as “Leaders of the Pack.” They were selected for consistent, dependable full-season performance as a source of color and beauty in the landscape. The cultivar source is shown in parenthesis.

### Dianthus:

- Bicolor:** 'Floral Lace Picotee' (BALL), 'Floral Lace Violet Picotee' (BALL)
- Pink:** 'Diamond Blush Pink' (SAK), 'Floral Lace Light Pink'
- Red:** 'Floral Lace Cherry' (BALL)
- Purple:** 'Diamond Purple' (SAK)
- Mix:** 'Floral Lace Mix' (BALL)

**Pansies:**

- White--Clear:** 'Delta Pure White' (NOV)  
**White--Blotch:** 'Fama Dark Eyed White' (BEN)  
**Yellow--Clear:** 'Ultima Beacon Yellow' (SAK), 'Universal Plus Primrose' (GOLD), 'Fama Golden Yellow' (BEN)  
**Rose--Blotch:** 'Bingo Rose w/ Blotch' (PA)  
**Blue--Clear:** 'Baby Bingo Lavender Blue' (PA), 'Universal Plus Marina' (GOLD), 'Baby Bingo Denim' (PA), 'Fama Blue Angel' (BEN), 'Crystal Bowl Supreme Sky Blue' (SAK), 'Crystal Bowl Supreme True Blue' (SAK), 'Atlas Blue' (BG), 'Ultima Blue Beacon' (SAK), 'Crystal Bowl True Blue Improved' (SAK), 'Baby Bingo Midnight' (PA)  
**Blue--Blotch:** 'Maxim Marina' (SAK), 'Maxim Supreme Blue' (SAK), 'Accord Blue Blotch' (GOLD), 'Experimental Delft' (FN)  
**Blue / White:** 'Bingo Blue Frost' (PA)  
**Purple--Clear:** 'Fama Purple' (BEN)  
**Purple--Blotch:** 'Universal Plus Violet Blotch' (GOLD), 'Purple Jester' (PA), 'Rally Lilac Cap' (PA)  
**Purple / White:** 'Skyline White/Purple Wing' (NOV)  
**Black--Clear:** 'Halloween' (PA)  
**Mixes:** 'Baby Bingo Winter Blues Mix' (PA), 'Fama Lilac Shades' (BEN), 'Universal Plus Blotch Mix' (GOLD), 'Fama Love Song' (BEN)

**Violas:**

- White:** 'Splendid White' (SAK)  
**Pink / White:** 'Penny Orchid Frost' (GOLD)  
**Blue / White:** 'Penny Azure Wings' (GOLD)  
**Purple / White:** 'Penny Violet Beacon' (GOLD)  
**Yellow:** 'Sorbet Yellow Delight' (WALL), 'Penny Primrose' (GOLD), 'Penny Yellow' (GOLD)  
**Blue:** 'Penny Blue' (GOLD), 'Experimental Silver' (FN), 'Moonbeam' (FN)  
**Blue / Yellow:** 'Splendid Blue & Yellow' (SAK)  
**Purple:** 'Penny Violet Flare' (GOLD)  
**Mixes:** 'Jewel Mix' (AT), 'Penny Lane Mix' (GOLD)



## NCSU Exceptional Performance Winners

Each year, the best of the best, those cultivars that exemplify outstanding performance during the trials, will be recognized as Exceptional Performance award winners. The winners are judged on full-season performance and are recommended as outstanding selections for our region. Growers, retailers and landscapers are encouraged to consider these cultivars first for their winter and spring color needs. Only seven cultivars were selected from 207 entries in the 1998–1999 winter trial:

1. *Viola*, 'Sorbet Yellow Delight' (WALL)
2. *Viola*, 'Penny Azure Wings' (GOLD)
3. *Viola*, 'Penny Violet Flare' (GOLD)
4. *Viola*, 'Splendid Blue & Yellow' (SAK)
5. *Viola*, 'Penny Violet Beacon' (GOLD)
6. *Pansy*, 'Baby Bingo Lavender Blue' (PA)
7. *Viola*, 'Jewel Mix' (AT)

## Series Ratings and Cultivar Performance

The season average ratings for the English daisy, dianthus, pansy and viola series that had at least three entries are listed on the next page in alphabetical order (Table 2). We did not include the calendula, campanula, or stock entries in Table 2 due to the lack of any series comparisons within those species. Actually, neither of the campanula entries had 50% of the plants in flower during any given week of the trials, though plants did survive throughout the trials.

The calendula varieties all performed very well up through week 53 (week of 30 December 1998) at which time plants were killed by low temperatures. Still, the calendulas were good sources of late autumn color throughout November and December.

The stock varieties also gave 6 weeks of good color through the end of November and December. They too were killed by low temperatures beginning in week 1 (week of 6 January 1999).

Neither series of English daisy were good sources of full-season color. Most of them began flowering in late February, and they continued to flower until the end of the trial.

Floral Lace was the top performing series of dianthus, but Diamond was also a very good performer. Dianthus offer some color during November and early December then begin to flower once again in mid-February. They definitely have a place in the winter landscape, especially during mild winters.

Baby Bingo was clearly the top performing pansy series in the 1998 / 1999 winter trials. Other series that rated near the top were Dancer, Crystal Bowl, Maxim, and Ultima. There were distinct differences in series average ratings and in number of weeks with 50% or more of the plants in flower (total of 22 weeks of evaluations). It is interesting to note the effects of season on overall flowering of pansies. For example, in the 1995 / 1996 trials, pansies averaged a rating of 3.1 and 18 out of 26 weeks of flowering. In the 1996 / 1997 trials they averaged 3.1 and 17 out of 22 weeks of flowering. In 1997 / 1998, they averaged 2.1 and 14 out of 21 weeks of flowering. This year, pansies average 2.9 and 19 out of 22 weeks

**Table 2. Series average ratings for the 1998 / 1999 winter trials.**

Series	Number trialed	Source	Avg. rating	No. wks with 50% plants in bloom*
<b>English Daisy</b>				
Carpet	3	FN	2.5	10
Radar	3	FN	2.5	8
All Bellis	6	---	2.5	9
<b>Dianthus</b>				
Diamond	6	SAK	3.1	12
Floral Lace	11	BALL	3.2	11
All Dianthus	19	---	3.2	11
<b>Pansy</b>				
Accord	17	GOLD	2.8	18
Atlas	8	BG	2.6	20
Baby Bingo	7	PA	3.5	21
Bingo	19	PA	2.6	18
Crystal Bowl	8	SAK	3.1	20
Dancer	3	BALL	3.2	21
Delta	8	NOV	2.7	18
Fama	15	BEN	3.0	18
Happy Face	7	BG	2.5	17
Jema	7	FN	2.6	16
Maxim	8	SAK	3.1	19
Ultima	3	SAK	3.1	21
Universal Plus	18	GOLD	2.9	19
All Pansies	155	---	2.9	19
<b>Viola</b>				
Penny	8	GOLD	3.9	22
Splendid	3	SAK	3.6	21
All Violas	16	---	3.8	21

\*Total of 22 weeks of evaluations.

with the exception of the white violas which flowered for a slightly shorter period. Violas tend to begin flowering earlier and flower longer in our trials than pansies. They definitely add to the winter palette of bedding plants.

The number of pansies and violas continues to increase each year, and the quality appears to improve as well. However, there is still a need for contrasting plant materials during our cool season in the Southeast such as dianthus. Hopefully other companion plants will be discovered in the future.

of flowering. This was definitely a better year for pansies than last year climatically.

Since full season flowering is such an important landscape performance feature, we have summarized average number of weeks with 50% or more of the plants in flower by flower color and type in Table 3. The whites, blues, and purples flowered longer than the other colors in the trials. The orange cultivars were once again the least floriferous (and poorest performers) in the trials. Within a given color, there appears to be little difference between clear and blotched flowers with the exception of yellow, where clear cultivars flowered longer than blotched cultivars. This information may be useful to landscapers seeking to select color schemes that maintain color throughout the winter bedding plant season.

All of the viola series tested outperformed the pansy series. Penny was the highest rated viola series, but Splendid also supplied excellent full season color. There was little difference among viola colors and duration of flowering,

**Table 3. Seasonal average rating for each color-type combination.**

Color--Type	No. of cultivars	Avg. rating	No. wks with 50% plants in bloom*
<b>Pansy</b>			
White--all	15	2.9	21
White--clear	8	2.9	22
White--blotch	7	2.9	21
White/purple	5	3.3	20
Yellow--all	27	2.6	18
Yellow--clear	15	2.9	21
Yellow--blotch	12	2.3	14
Orange--clear	7	1.6	9
Rose--all	12	2.5	16
Rose--clear	3	2.4	19
Rose--blotch	9	2.5	15
Red--all	13	2.4	16
Red--clear	4	2.3	17
Red--blotch	9	2.5	16
Red/white	4	2.7	19
Red/yellow	6	2.5	17
Blue--all	27	3.4	20
Blue--clear	12	3.4	20
Blue--blotch	15	3.3	21
Blue/white	2	3.2	22
Purple--all	14	3.1	21
Purple--clear	7	2.9	21
Purple--blotch	7	3.3	20
Black	2	2.2	13
Mixes	18	3.0	20
Clear Pansies	76	2.9	19
Blotched Pansies	76	2.9	18
All Pansies	155	2.9	19
<b>Viola</b>			
White	1	3.5	20
Yellow	4	2.7	22
Blue	3	3.7	20
Purple	1	4.0	22
Blue/white	3	3.7	21
Mixes	3	4.0	22
All Violas	16	3.8	21

\*Total of 22 weeks of evaluations.

**Table 4. Season average rating and comments for English daisy (E), calendula (C) campanula (M), dianthus (D), stock (S), pansy (P), and viola (V) cultivars. Pansy cultivars are listed by season average rating for each flower color type (clear and blotched) within each flower color category (white, yellow, orange, rose, red, blue, etc.).**

Species:	Cultivar	Color--Type	Source	Season average rating	Comments
E	Carpet White	White	FN	2.6	
E	Radar White	White	FN	2.4	
E	Carpet Rose	Rose	FN	2.7	Best performing English daisy in the trials
E	Radar Rose	Rose	FN	2.4	
E	Radar Red	Red	FN	2.7	
E	Carpet Red	Red	FN	2.2	
C	Calypso Yellow With Black Center	Yellow	SAK	0.9	
C	Calypso Orange With Black Center	Orange	SAK	0.9	
C	Princess Gemischt	Mix	BEN	0.9	
M	Belle Blue	Blue	BALL	2.8	
M	Belle Chiffon	Blue	BALL	2.4	
D	Floral Lace Picotee	Red/White	BALL	3.4	Best dianthus in trials; best bicolor dianthus
D	Floral Lace Violet Picotee	Purple/White	BALL	3.3	
D	Diamond Blush Pink	Pink	SAK	3.3	Best pink dianthus
D	Floral Lace Light Pink	Pink	BALL	3.3	
D	Diamond Pink	Pink	SAK	3.1	
D	Pink Flash	Pink	AT	2.9	
D	Diamond Coral	Pink	SAK	2.9	
D	Floral Lace Rose	Rose	BALL	3.2	
D	Diamond Carmine Rose	Rose	SAK	3.1	
D	Floral Lace True Rose	Rose	BALL	3.1	
D	Floral Lace Cherry	Red	BALL	3.3	Best red dianthus
D	Diamond Scarlet	Red	SAK	3.1	
D	Floral Lace Crimson	Red	BALL	3.1	
D	Floral Lace Experimental Lilac	Lavender	BALL	3.2	
D	Floral Lace Violet	Lavender	BALL	3.2	
D	Diamond Purple	Purple	SAK	3.3	Best purple dianthus
D	Floral Lace Purple	Purple	BALL	3.0	
D	Floral Lace Mix	Mix	BALL	3.3	Best dianthus mix
D	Flash Mix	Mix	AT	3.0	
S	Vintage White	White	WALL	1.2	
S	Vintage Copper	Copper	WALL	1.0	
S	Vintage Rose	Rose	WALL	1.1	

Table 4, Continued.

Species:	Cultivar	Color--Type	Source	Season average rating	Comments
S	Vintage Lavender	Purple, light	WALL	1.0	
S	Vintage Lilac	Purple	WALL	0.9	
S	Vintage Mix	Mix	WALL	1.0	
P	Delta Pure White	White--Clear	NOV	3.4	Best clear white pansy
P	Bingo Clear White Impr.	White--Clear	PA	3.0	
P	Fama Pure White	White--Clear	BEN	3.0	
P	Crystal Bowl Supreme White	White--Clear	SAK	2.9	
P	Crystal Bowl White	White--Clear	SAK	2.9	
P	Atlas White	White--Clear	BG	2.8	
P	Bingo Clear White	White--Clear	PA	2.8	
P	Universal Plus White	White--Clear	GOLD	2.4	
P	Fama Dark Eyed White	White--Blotch	BEN	3.6	Best white pansy in the trials; best blotched white pansy
P	Dancer White <sup>w</sup> /Blotch	White--Blotch	BALL	3.1	
P	Accord White Blotch	White--Blotch	GOLD	3.0	
P	Experimental White Blotch	White--Blotch	FN	2.8	
P	Jema White Blotch	White--Blotch	FN	2.7	
P	Bingo White <sup>w</sup> /Blotch	White--Blotch	PA	2.5	
P	Happy Face White	White--Blotch	BG	2.4	
P	Skyline White/Purple Wing	White/Purple--Blotch	NOV	3.9	Best purple & white pansy
P	Baby Bingo Beaconsfield	Purple/White--Blotch	PA	3.3	
P	Dancer Beaconsfield	Purple/White--Blotch	BALL	3.2	
P	Fama See-Me	Purple/White--Blotch	BEN	3.1	
P	Universal Plus Beaconsfield	Purple/White--Blotch	GOLD	3.0	
P	Universal Plus Primrose	Yellow, light--Clear	GOLD	3.3	Best light yellow clear pansy
P	Accord Clear Primrose	Yellow, light--Clear	GOLD	3.2	
P	Atlas Primrose	Yellow, light--Clear	BG	2.6	
P	Ultima Beacon Yellow	Yellow--Clear	SAK	3.4	Best yellow clear pansy; middle is dark yellow
P	Crystal Bowl Supreme Yellow	Yellow--Clear	SAK	3.1	
P	Baby Bingo Yellow	Yellow--Clear	PA	3.0	
P	Bingo Yellow	Yellow--Clear	PA	3.0	
P	Crystal Bowl Yellow	Yellow--Clear	SAK	2.8	
P	Universal Plus Yellow	Yellow--Clear	GOLD	2.8	
P	Atlas Yellow	Yellow--Clear	BG	2.6	

Table 4, Continued.

Species:	Cultivar	Color--Type	Source	Season average rating	Comments
P	Accord Clear Yellow	Yellow--Clear	GOLD	2.6	
P	Bingo Clear Yellow Impr.	Yellow--Clear	PA	2.6	
P	Fama Primrose	Yellow--Clear	BEN	2.4	
P	Fama Golden Yellow	Yellow, dark--Clear	BEN	3.3	Best dark yellow clear pansy
P	Accord Daffodil Mix	Yellow, mix--Clear	GOLD	2.5	
P	Experimental Lemon Blotch	Yellow, light--Blotch	FN	2.6	
P	Fama Dark Eyed Lemon	Yellow, light--Blotch	BEN	2.4	
P	Universal Plus Yellow Blotch	Yellow--Blotch	GOLD	3.1	Best yellow pansy with blotch
P	Maxim Yellow	Yellow--Blotch	SAK	3.0	
P	Experimental Yellow Blotch	Yellow--Blotch	FN	2.7	
P	Experimental Yellow Blotch (UXEOU)	Yellow--Blotch	FN	2.2	
P	Accord Yellow Blotch	Yellow--Blotch	GOLD	2.2	
P	Happy Face Yellow	Yellow--Blotch	BG	2.1	
P	Jema Yellow Blotch	Yellow--Blotch	FN	2.1	
P	Fama Dark Eyed Yellow	Yellow--Blotch	BEN	2.0	
P	Maxim Supreme Yellow	Yellow--Blotch	SAK	1.9	
P	Bingo Yellow <sup>w</sup> /Blotch	Yellow--Blotch	PA	1.7	
P	Universal Plus Orange	Orange--Clear	GOLD	2.0	Best orange pansy in the trials
P	Experimental Orange (UXESL)	Orange--Clear	FN	1.8	
P	Delta Deep Orange	Orange--Clear	NOV	1.7	
P	Atlas Orange	Orange--Clear	BG	1.6	
P	Experimental Tangerine (UXEHJ)	Orange--Clear	FN	1.5	
P	Fama Orange	Orange--Clear	BEN	1.4	
P	Accord Clear Orange	Orange--Clear	GOLD	1.3	
P	Bingo Pink Shades	Pink, mixed--Clear	PA	0.8	
P	Bingo Light Rose <sup>w</sup> /Blotch	Rose, light--Blotch	PA	2.3	
P	Clear Sky Rose	Rose--Clear	NOV	2.6	Best rose clear pansy
P	Accord Clear Rose	Rose--Clear	GOLD	2.6	
P	Atlas Rose	Rose--Clear	BG	2.0	
P	Bingo Rose <sup>w</sup> /Blotch	Rose--Blotch	PA	3.4	Best rose pansy in the trials; best blotched rose
P	Universal Plus Rose Blotch	Rose--Blotch	GOLD	2.7	
P	Experimental Rose Blotch	Rose--Blotch	FN	2.7	
P	Happy Face Rose	Rose--Blotch	BG	2.5	

Table 4, Continued.

Species:	Cultivar	Color--Type	Source	Season average rating	Comments
P	Accord Rose Blotch	Rose--Blotch	GOLD	2.5	
P	Delta Rose <sup>w</sup> /Blotch	Rose--Blotch	NOV	2.3	
P	Bingo Rose Frost	Rose/White--Blotch	PA	2.1	
P	Jema Rose Shades	Rose, mix--Blotch	FN	2.0	
P	Universal Plus Red	Red--Clear	GOLD	2.7	Best red clear pansy
P	Ultima Beacon Bronze	Red--Clear	SAK	2.5	Upper petals are burnt orange; lower are dark red
P	Accord Clear Red	Red--Clear	GOLD	2.2	
P	Delta Pure Red	Red--Clear	NOV	1.9	
P	Faces Red Bicolor	Red--Blotch	GRS	3.0	Best red pansy in the trials; best blotched red
P	Accord Red Blotch	Red--Blotch	GOLD	2.8	
P	Maxim Red	Red--Blotch	SAK	2.8	
P	Fama Red	Red--Blotch	BEN	2.5	
P	Experimental Scarlet Blotch	Red--Blotch	FN	2.5	
P	Universal Plus Red Blotch	Red--Blotch	GOLD	2.5	
P	Maxim Supreme Red	Red--Blotch	SAK	2.5	
P	Happy Face Red	Red--Blotch	BG	1.9	
P	Bingo Red Blotch	Red--Blotch	PA	1.8	
P	Eclipse	Red/White--Clear	AAS	2.9	
P	98BP05	Red/White--Clear	AAS	2.6	
P	Experimental Red Wing (UXEKV)	Red/White--Clear	FN	2.5	
P	Experimental Red Wing	Red/White--Blotch	FN	2.9	
P	Bingo Red & Yellow	Red/Yellow--Clear	PA	2.4	
P	Universal Plus Yellow/Red Blotch	Red/Yellow--Clear	GOLD	2.3	
P	Universal Plus Red Wing	Red/Yellow--Blotch	GOLD	3.0	Best red & yellow blotched pansy in the trials
P	Accord Yellow/Red Blotch	Red/Yellow--Blotch	GOLD	2.8	Blotch is red
P	Accord Red Wing	Red/Yellow--Blotch	GOLD	2.6	
P	Jema Red & Yellow	Red/Yellow--Blotch	FN	1.9	
P	Jema Red Shades	Red, mix--Blotch	FN	2.8	
P	Crystal Bowl Supreme Sky Blue	Blue, light--Clear	SAK	3.7	Best light blue clear pansy
P	Universal Plus Light Blue	Blue, light--Clear	GOLD	3.4	
P	Fama Silver Blue	Blue, light--Clear	BEN	3.4	
P	Baby Bingo Sky Blue	Blue, light--Clear	PA	3.3	
P	Bingo Azure Clear	Blue, light--Clear	PA	3.2	

Table 4, Continued.

Species:	Cultivar	Color--Type	Source	Season average rating	Comments
P	Atlas Blue Splash	Blue, light--Clear	BG	3.1	
P	Baby Bingo Lavender Blue	Blue--Clear	PA	4.0	Best blue pansy in the trials; best blue clear pansy
P	Universal Plus Marina	Blue--Clear	GOLD	3.9	
P	Baby Bingo Denim	Blue--Clear	PA	3.8	
P	Fama Blue Angel	Blue--Clear	BEN	3.8	
P	Crystal Bowl Supreme True Blue	Blue--Clear	SAK	3.6	
P	Atlas Blue	Blue--Clear	BG	3.5	
P	Crystal Bowl True Blue Impr	Blue--Clear	SAK	3.5	
P	Delta True Blue Improved	Blue--Clear	NOV	3.3	
P	Fama True Blue	Blue--Clear	BEN	3.3	
P	Delta Pure Light Blue	Blue--Clear	NOV	3.2	
P	Crystal Bowl Sky Blue	Blue--Clear	SAK	2.2	
P	Baby Bingo Midnight	Blue, dark--Clear	PA	3.5	Best dark blue clear pansy
P	Maxim Supreme Marina	Blue, light--Blotch	SAK	3.5	Best light blue blotched pansy
P	Bingo Blue Light Blotch	Blue, light--Blotch	PA	3.2	
P	Maxim Marina	Blue--Blotch	SAK	3.8	Best blue blotched pansy
P	Maxim Supreme Blue	Blue--Blotch	SAK	3.7	
P	Accord Blue Blotch	Blue--Blotch	GOLD	3.6	
P	Experimental Delft (UXEGT)	Blue--Blotch	FN	3.5	
P	Ultima Beacon Blue	Blue--Blotch	SAK	3.5	Upper petals are lavender
P	Maxim Blue	Blue--Blotch	SAK	3.4	
P	Dancer Blue Blotch	Blue--Blotch	BALL	3.4	
P	Bingo Blue <sup>w</sup> /Blotch	Blue--Blotch	PA	3.3	
P	Happy Face Marina	Blue--Blotch	BG	3.1	
P	Happy Face Blue	Blue--Blotch	BG	3.1	
P	Delta Deep Blue w/Blotch	Blue--Blotch	NOV	3.0	
P	Experimental Blue Blotch	Blue--Blotch	FN	3.0	
P	Experimental Deep Blue Blotch	Blue, dark--Blotch	FN	3.0	
P	Bingo Blue Frost	Blue/White--Blotch	PA	3.4	Best blue & white blotched pansy
P	Experimental Blue Wing	Blue/White--Blotch	FN	3.0	
P	Baby Bingo Winter Blues Mix	Blue, mix--Clear	PA	3.6	
P	Jema Blue Shades	Blue, mix--Blotch	FN	3.0	
P	Universal Plus Lavender	Purple, light--Clear	GOLD	2.6	

Table 4, Continued.

Species:	Cultivar	Color--Type	Source	Season average rating	Comments
P	Fama Purple	Purple--Clear	BEN	3.7	Best purple clear pansy
P	Purple Rain	Purple--Clear	PA	3.4	
P	Clear Sky Purple	Purple--Clear	NOV	3.3	
P	Atlas Purple	Purple--Clear	BG	2.7	
P	Delta Pure Violet	Purple--Clear	NOV	2.6	
P	Bingo Deep Purple	Purple--Clear	PA	2.2	
P	Rally Lilac Cap	Purple, light--Blotch	PA	3.5	
P	Universal Plus Violet Blotch	Purple--Blotch	GOLD	3.9	Best purple pansy in the trials; best purple blotched
P	Purple Jester	Purple--Blotch	PA	3.8	
P	Jema Violet Blue	Purple--Blotch	FN	3.4	
P	Accord Violet with Face	Purple--Blotch	GOLD	3.1	
P	Experimental Violet Blotch	Purple--Blotch	FN	3.0	
P	Happy Face Purple	Purple--Blotch	BG	2.6	
P	Fama Lilac Shades	Purple, mix--Clear	BEN	3.8	Best pansy mix in the trials; best clear mix
P	Lavender Cool Shades	Purple, mix--Clear	BALL	3.4	
P	Halloween	Black--Clear	PA	3.7	Best black pansy in trial; truly black coloration
P	Trick or Treat Mix	Black and Orange	PA	3.2	
P	Fama Love Song	Mix--Clear	BEN	3.4	
P	Accord Clear Mix	Mix--Clear	GOLD	3.3	
P	Universal Plus Citrus Mix	Mix--Clear	GOLD	3.2	
P	Universal Plus Blotch Mix	Mix--Blotch	GOLD	3.5	Best blotched mix in the trials
P	Accord Blotch Mix	Mix--Blotch	GOLD	3.3	
P	Bingo Blotch Mix	Mix--Blotch	PA	2.8	
P	Accord Mix	Mix--Both	GOLD	3.1	
P	Universal Plus Mix	Mix--Both	GOLD	3.0	
P	Bingo Mix	Mix--Both	PA	2.7	
V	Splendid White	White	SAK	3.5	Best white viola in the trials
V	Penny Orchid Frost	Pink/White	GOLD	3.8	Cream petals with pink blotch
V	Penny Azure Wings	Blue/White	GOLD	4.0	Best blue & white viola in the trials
V	Splendid Blue & Yellow	Blue/Yellow	SAK	4.0	Best blue & yellow viola in the trials
V	Penny Violet Beacon	Purple/White	GOLD	4.0	Best purple & yellow viola in the trials
V	Experimental Purple Wing	White/Purple	FN	3.1	
V	Penny Primrose	Yellow, light	GOLD	3.7	

Table 4, Continued.

Species:	Cultivar	Color--Type	Source	Season average rating	Comments
V	Sorbet Yellow Delight	Yellow	WALL	4.0	Best viola in the trials; best yellow viola
V	Penny Yellow	Yellow	GOLD	3.7	
V	Splendid Yellow	Yellow	SAK	3.3	
V	Experimental Silver	Blue, light	FN	3.6	
V	Penny Blue	Blue	GOLD	3.9	Best blue viola in the trials
V	Moonbeam	Blue	FN	3.5	Nice compact plants
V	Penny Violet Flare	Purple	GOLD	4.0	Best purple viola in the trials
V	Jewel Mix	Mix	AT	4.0	Best viola mix in the trials
V	Penny Lane Mix	Mix	GOLD	3.9	

Visit the NCSU Floriculture Home Page at:

<http://www2.ncsu.edu/floriculture/>

- Read up on the Southeast Greenhouse Conference and Trade Show
- Download the latest floriculture extension and research publications and software available from NCSU for free
- Visit the NCCFGA pages and download back issues of the Bulletin
- Download the latest entomology notes for greenhouse pest control



Table 5, Continued.

Species:	Cultivar	Source	Weekly ratings (week of the year) and degree of flowering																		Wks in bloom*					
			48	49	50	51	52	53	1	2	3	4	5	6	7	8	9	10	11	12		13	14	15	16	
D	Floral Lace Mix	BALL	3	3-	3-	3-	3-	3-	3-	3.5-	3.5-	3.5-	3.5	3.5	3.5	3.5-	3.5-	3.5-	3.5-	3.5	3.5	3	3	3	9	
D	Flash Mix	AT	3-	3-	3	3	3-	3-	3-	3-	3-	3-	3.5-	3.5	3.5	3.5-	3-	3.5-	3.5-	3-	2.5-	2.5	2.5	2.5	7	
S	Vintage White	WALL	3-	3-	3	3	3	3-	1-	1-	1-	1-	1-	1-	1-	.5-	0	0	0	0	0	0	0	0	3	
S	Vintage Copper	WALL	3	3	3	3	3	3-	1-	1-	.5-	.5-	.5-	.5-	.5-	.5-	0	0	0	0	0	0	0	0	5	
S	Vintage Rose	WALL	3	3	3	3	3	3	1	1-	.5-	.5-	.5-	.5	.5	.5	.5-	0	0	0	0	0	0	0	7	
S	Vintage Lavender	WALL	3	3	3	3	3	3	1	1-	.5-	.5-	.5-	.5	.5	0	0	0	0	0	0	0	0	0	7	
S	Vintage Lilac	WALL	3	3	3	3	3	2.5	1	1-	.5-	.5-	0	0	0	0	0	0	0	0	0	0	0	0	7	
S	Vintage Mix	WALL	3	3	3	3	3	2.5	.5	.5-	.5-	.5-	.5-	.5-	.5-	.5-	0	0	0	0	0	0	0	0	7	
P	Delta Pure White	NOV	3	3	3	3	3	3.5	3.5	3.5	3.5	3.5	3.5	3.5	3.5	3.5	3.5	3.5	3.5	3.5	3.5	3.5	3.5	3.5	22	
P	Bingo Clear White Impr.	PA	3	3	3	3	3	3	3	3	3	3	3	3	3	3	3	3	3	3	3	3	3	3.5	3.5	22
P	Fama Pure White	BEN	3-	3-	3	3	3	3	3	3	3	3	3	3	3	3	3	2.5	3	3	3	3	3	3	20	
P	Crystal Bowl Supreme White	SAK	3-	3-	3	3	3	3	3	3	3	3	3	3	3	3	3	2.5	3	2.5	2.5	3	3	3	20	
P	Crystal Bowl White	SAK	3	3	3	3	3	3	3	3	3	3	3	3	3	3	3	3	2.5	2.5	2.5	2.5	3	3	22	
P	Atlas White	BG	3	3	3	3	3	3	3	3	3	3	3	3	2.5	2.5	2.5	2.5	2.5	2.5	2.5	2.5	3	3	22	
P	Bingo Clear White	PA	3	3	3	3	3	3	3	3	3	3	3	2.5	2.5	2.5	2.5	2.5	2.5	2.5	2.5	2.5	2.5	3	22	
P	Universal Plus White	GOLD	3	3	3	3	2.5	3	3	2.5	2.5	2.5	2.5	2.5	2	2	2	2	2	2	2	2	2	2.5	22	
P	Fama Dark Eyed White	BEN	3-	3-	3	3	3	3	3.5	3.5	3.5	3.5	4	4	4	4	4	4	4	4	4	4	4	4	20	
P	Dancer White <sup>w</sup> /Blotch	BALL	3-	3-	3	3	3	3	3	3	3	3	3	3	3	3	3	3	3	3	3	3	3.5	3.5	3.5	20
P	Accord White Blotch	GOLD	3	3	3-	3	3	3	3	3	3	3	3	3	3	3	3	3	3	3	3	3	3	3	3.5	21
P	Experimental White Blotch	FN	3	3-	3	3	3	3	3	3	3	3	3	3	2.5	2.5	2.5	2.5	2.5	2.5	2.5	2.5	2.5	2.5	21	
P	Jema White Blotch	FN	3	3-	3-	3	3	3	3	3	3	3	3	3	3	3	3	2.5	2.5	2	2	2	2	2	20	
P	Bingo White <sup>w</sup> /Blotch	PA	3	3	3	3	3	3	3	2.5	2.5	2.5	2.5	2.5	2.5	2.5	2	2	2	2	2	2	2	2	22	
P	Happy Face White	BG	3-	3-	3	3	3	3	3	2.5	2.5	2.5	2.5	2.5	2	2	2	2	2	2	2	2	2	2	20	
P	Skyline White/Purple Wing	NOV	3-	3-	3	3	3	3.5	3.5	3.5	3.5	3.5	4	4	4	4.5	4.5	4.5	4.5	4.5	4.5	4.5	4.5	4.5	20	
P	Baby Bingo Beaconsfield	PA	3-	3-	3	3	3	3	3	3	3	3	3.5	3.5	3.5	3.5	3.5	3.5	3.5	3.5	3.5	3.5	3.5	3.5	20	
P	Dancer Beaconsfield	BALL	3	3-	3	3	3	3	3	3	3	3.5	3.5	3.5	3.5	3.5	3.5	3	3	3.5	3	3.5	3.5	3.5	21	
P	Fama See-Me	BEN	3-	3-	3	3	3	3	3	3	3	3	3	3.5	3.5	3.5	3.5	3.5	3.5	3	3	3	3	3	20	
P	Universal Plus Beaconsfield	GOLD	3-	3-	3	3	3	3	3	3	3	3	3	3.5	3.5	3	3	3	3	3	3	2.5	3	3	20	

Week	48	49	50	51	52	53	1	2	3	4	5	6	7	8
Date	24 Nov.	2 Dec.	9 Dec.	16 Dec.	23 Dec.	30 Dec.	6 Jan.	13 Jan.	20 Jan.	27 Jan.	3 Feb.	10 Feb.	17 Feb.	24 Feb.

Week	9	10	11	12	13	14	15	16
Date	3 Mar.	10 Mar.	17 Mar.	24 Mar.	31 Mar.	7 Apr.	14 Apr.	21 Apr.

**\*Total number of weeks for the evaluation was 22.**

Table 5, Continued.

Species:	Cultivar	Source	Weekly ratings (week of the year) and degree of flowering																Wks in bloom*						
			48	49	50	51	52	53	1	2	3	4	5	6	7	8	9	10		11	12	13	14	15	16
P	Universal Plus Primrose	GOLD	3	3	3	2.5-	3	3	3	3	3	3.5	3.5	3.5	3.5	3.5	3.5	3	3.5	3.5	3.5	3.5	3.5	3.5	21
P	Accord Clear Primrose	GOLD	3	3	3-	3-	3	3	3	3	3	3	3	3	3	3.5	3.5	3.5	3.5	3.5	3.5	3.5	3.5	3.5	20
P	Atlas Primrose	BG	3	3	3	3	3	2.5	3	2.5	2.5	2.5	2.5	2.5	2.5	2.5	2.5	2.5	2.5	2.5	2.5	2.5	2.5	2.5	22
P	Ultima Beacon Yellow	SAK	3	3	3	3	3	3	3	3	3	3.5	3.5	3.5	3.5	3.5	3.5	3.5	3.5	3.5	4	4	4	4	22
P	Crystal Bowl Supreme Yellow	SAK	3	3	3	3	3	3	3	3	3	3	3	3	3	3.5	3	3	3	3	3	3	3.5	3.5	22
P	Baby Bingo Yellow	PA	3-	3-	3	3	3	3	3	3	3	3	3	3	3	3	3	3	3	3	3	3	3	3.5	20
P	Bingo Yellow	PA	3-	3-	3	3	3	3	3	3	3	3	3	3	3	3	3	3	3	3	3	3	3	3	20
P	Crystal Bowl Yellow	SAK	3-	3-	3	3	3	3	3	3	3	3	2.5	2.5	2.5	2.5	2.5	2.5	2.5	2.5	2.5	2.5	2.5	3	20
P	Universal Plus Yellow	GOLD	3	3	3	3	3	3	3	3	3	3	2.5	2.5	2.5	2.5	2.5	2.5	2.5	2.5	2	2.5	3	22	
P	Atlas Yellow	BG	3	3	3	3	2.5	2.5	3	3-	3	2.5	2.5	2.5	2.5	2.5	2.5	2.5	2.5	2	2.5	2.5	2.5	2.5	21
P	Accord Clear Yellow	GOLD	3	3	3	3	3	3	3	2.5	2.5	2.5	2.5	2.5	2.5	2.5	2.5	2.5	2.5	2	2	2.5	2.5	2.5	22
P	Bingo Clear Yellow Impr.	PA	3-	3	3	3	3	3	3	3	2.5	2.5	2	2	2	2.5	2.5	2.5	2.5	2	2.5	2	2	2	21
P	Fama Primrose	BEN	3-	3-	3	3	3	3	3	2.5	2.5	2.5	2.5	2.5	2	2	2	2	2	2	2	2	2	2	20
P	Fama Golden Yellow	BEN	3-	3-	3-	3-	3	3-	3-	3	3	3.5	3.5	3.5	3.5	3.5	3.5	3.5	3.5	3.5	3.5	3.5	3.5	3.5	16
P	Accord Daffodil Mix	GOLD	3-	3-	3	3	3	2.5	3	2.5-	2.5	2.5	2.5	2.5	2.5	2.5	2.5	2.5	2.5	2.5	2	2	2	2	19
P	Experimental Lemon Blotch	FN	3-	3-	3-	3-	3-	2.5-	2.5-	2.5-	2.5	2.5	2.5	2.5	2	2	2.5	2.5	2.5	2.5	2.5	2.5	2.5	2.5	14
P	Fama Dark Eyed Lemon	BEN	3-	3	3	3	3	3	3	2.5	2.5	2.5	2.5	2.5	2	2	2	1.5	1.5	2	2	2	2	2	21
P	Universal Plus Yellow Blotch	GOLD	3-	3-	3-	3	3	3	3	3	3	3	3	3	3	3.5	3.5	3.5	3	3	3	3	3	3	19
P	Maxim Yellow	SAK	3-	3-	3-	3	3	3	3	3	3	3	3	3	3	3	3	3	3	2.5	2.5	3	3	3	19
P	Experimental Yellow Blotch	FN	3-	3-	3-	3	2.5	2.5	2.5	3	3	3	3	3	2.5	2.5	2.5	2	2	2	2.5	2.5	3	3	19
P	Experimental Yellow Blotch (UXEOU)	FN	3-	3-	3-	3-	2.5-	2-	2-	2-	2	2	2	2	2	2	2	2	2	2	2	2	2	2	14
P	Accord Yellow Blotch	GOLD	3	3	3-	2.5	2.5-	2.5-	2.5-	2.5-	2-	2-	2-	2	2	2	1.5	1.5	1.5	2	2	2	2	2	14
P	Happy Face Yellow	BG	3	3	3-	3-	2.5-	2.5-	2.5-	2-	1.5-	1.5-	1.5-	1.5-	1.5-	1.5-	1.5-	1.5	1.5	2	2.5	2.5	2.5	2.5	9
P	Jema Yellow Blotch	FN	3-	3-	3-	2.5-	2.5-	2.5-	2.5-	2.5-	2-	2-	2-	2-	1.5-	1.5-	1.5	1.5	1.5	2	2	2	2	2	8
P	Fama Dark Eyed Yellow	BEN	3	3-	2.5-	2.5-	2.5-	2-	2-	2-	2	2	1.5	1.5	1.5	1.5	1.5	1.5	1.5	1.5	1.5	1.5	1.5	2	15
P	Maxim Supreme Yellow	SAK	3-	3-	2.5-	2-	2.5-	2-	2-	2	2	2	1.5	1.5	1.5	1.5	1.5	1.5	1.5	1.5	1.5	1.5	1.5	1.5	15
P	Bingo Yellow w/Blotch	PA	3-	3-	3-	2.5-	2.5-	2-	2-	2-	1.5-	1.5-	1.5-	1.5-	1.5	1.5-	1-	1-	1-	1	1	1	1	1	6
P	Universal Plus Orange	GOLD	2.5-	2.5-	2.5-	2.5-	2.5-	2	2	2	2	2	2	2	2	2	1.5	2	2	2	1.5	1.5	2	2	17

Week	48	49	50	51	52	53	1	2	3	4	5	6	7	8
Date	24 Nov.	2 Dec.	9 Dec.	16 Dec.	23 Dec.	30 Dec.	6 Jan.	13 Jan.	20 Jan.	27 Jan.	3 Feb.	10 Feb.	17 Feb.	24 Feb.

Week	9	10	11	12	13	14	15	16
Date	3 Mar.	10 Mar.	17 Mar.	24 Mar.	31 Mar.	7 Apr.	14 Apr.	21 Apr.

\*Total number of weeks for the evaluation was 22.

Table 5, Continued.

Species:	Cultivar	Source	Weekly ratings (week of the year) and degree of flowering																Wks in bloom*							
			48	49	50	51	52	53	1	2	3	4	5	6	7	8	9	10		11	12	13	14	15	16	
P	Experimental Orange (UXESL)	FN	3-	3-	2.5-	2-	2-	2-	2-	2-	1.5-	1.5-	1.5-	1-	1-	1-	1	1	1.5	1.5	1.5	2	2.5	2	8	
P	Delta Deep Orange	NOV	3-	3-	2-	2-	2	2-	2-	2	1.5	1.5	1.5-	1.5-	1.5	1.5	1	1.5	1.5	1	1	1.5	1.5	13		
P	Atlas Orange	BG	3	3-	2.5-	2-	2-	2-	2-	2-	1.5-	1.5-	1.5-	1-	1-	1-	1	1	1.5	1	1	1.5	1.5	8		
P	Experimental Tangerine (UXEHJ)	FN	2.5-	2.5-	2-	2-	2-	2-	1.5-	1.5-	1.5-	1.5-	1-	1-	1-	1-	1-	1-	1	1	1	1	1.5	1.5	5	
P	Fama Orange	BEN	2.5-	2.5-	2-	2-	2-	2-	1.5-	1-	1-	1-	1-	1-	1-	1-	1-	1	1	1	1	1	1.5	1.5	6	
P	Accord Clear Orange	GOLD	2-	2-	2-	2-	2-	2-	1.5-	1-	1-	1-	1-	1-	1-	1-	1	1	1	1	1	1	1.5	1.5	7	
P	Bingo Pink Shades	PA	1.5-	3-	2-	1.5-	1-	1-	.5-	.5-	.5-	.5-	.5-	.5-	.5-	.5	.5	.5	.5	.5	.5	.5	.5	.5	8	
P	Bingo Light Rose w/Blotch	PA	3	3	3-	3-	2.5	2	2-	2-	2	2	2	2	2.5	2.5	2.5	2.5	2.5	2.5	2	2	2	2	18	
P	Clear Sky Rose	NOV	3	3	3	3	3	3	2.5-	2.5-	2	2	2.5	2.5	2.5	2.5	2.5	2.5	2.5	2.5	2.5	2.5	2.5	3	3	20
P	Accord Clear Rose	GOLD	3	3-	3-	3	3	3	2.5-	2.5-	2.5	2.5	2.5	2.5	2.5	2.5	2.5	2.5	2.5	2.5	2.5	2	2.5	2.5	18	
P	Atlas Rose	BG	3	3	3-	3-	2	2	2-	2-	2	2	2	1.5	1.5	1.5	1.5	1.5	1.5	1.5	1.5	2	1.5	1.5	18	
P	Bingo Rose w/Blotch	PA	3	3	3	3	3	3	2.5-	3.5	3.5	3.5	3.5	3.5	3.5	3.5	3.5	3.5	3.5	3.5	3.5	3.5	3.5	4	4	21
P	Universal Plus Rose Blotch	GOLD	3-	3-	3	3	2.5-	2.5-	2.5-	2-	2.5	2-	2	3	2.5	2.5	3	2.5	3	3	3	3	3	3	15	
P	Experimental Rose Blotch	FN	3-	3-	3-	3-	3	3	2.5-	3	3	3	2.5-	2.5	2.5	2.5	2.5	2	2	2.5	2.5	2.5	2.5	16		
P	Happy Face Rose	BG	3-	3-	3-	3-	2.5-	2.5-	2.5-	2.5-	2.5	2.5	2.5	2.5	2.5	2.5	2	2	2	2	2	2	2.5	2.5	14	
P	Accord Rose Blotch	GOLD	3	3-	3-	3-	2.5-	2.5-	2.5-	2.5-	2.5-	2-	2	2	2	2	2	2.5	2	2.5	2.5	2.5	2.5	2.5	13	
P	Delta Rose w/Blotch	NOV	3	3-	3-	3-	2.5-	2.5-	2.5-	2-	2-	2-	2-	2	2	2	2	2	2	2	2	2	2.5	2.5	12	
P	Bingo Rose Frost	PA	3	3	3-	3-	2.5-	2-	2-	2-	2	2	2	2.5	2	2	2	2	2	2	2	1.5	1.5	1.5	1.5	16
P	Jema Rose Shades	FN	3	3-	3-	3-	2.5-	2.5-	2-	2-	2	2-	1.5	1.5	1.5	1.5	1.5	1.5	1.5	1.5	1.5	1.5	1.5	1.5	14	
P	Universal Plus Red	GOLD	3	3-	3-	3-	3	3	3-	2.5-	2.5	3	2.5	3	2.5	2.5	2.5	2.5	2.5	2.5	2.5	2.5	2.5	2.5	17	
P	Ultima Beacon Bronze	SAK	3	3	3-	3	3	3	3	2.5-	2.5	3	2.5	2.5	2.5	2	2	2	2	2	2	2	2	2	20	
P	Accord Clear Red	GOLD	3	3	3-	3-	2.5-	2.5	2-	2-	2-	2-	2	2	2	2	2	2	2	2	2	2.5	2.5	1.5	1.5	15
P	Delta Pure Red	NOV	3	3-	3	3-	2.5-	2.5-	2-	2-	2-	1.5-	1	1.5	1.5	1.5	1.5	1.5	1.5	1.5	1.5	1.5	1.5	1.5	14	
P	Faces Red Bicolor	GRS	3	3	3	3	3-	3	3	3	3	3	3	3	3	3	3	3	3	3	3	3	3	2.5	2.5	21
P	Accord Red Blotch	GOLD	3	3-	3	3	2.5	2.5	2.5-	2.5-	2.5	2.5	2.5	3	3	3	3	3	3	3	3	3	3	3	3	19
P	Maxim Red	SAK	3-	3-	3	3	3	3	3	3	3	3	3	3	3	3	3	2.5	2.5	2.5	2.5	2.5	2.5	2.5	2.5	20
P	Fama Red	BEN	3-	3-	3	3	3	3	3	3-	2.5	2.5	2.5	2.5	2.5	2.5	2	2	2	2	2	2	2	2	19	
P	Experimental Scarlet Blotch	FN	3-	3-	3-	3-	2.5-	2.5-	2.5-	2.5-	2.5-	2.5-	2.5-	2.5	2.5	2.5	2.5	2.5	2.5	2.5	2	2	2	2	10	

Week	48	49	50	51	52	53	1	2	3	4	5	6	7	8
Date	24 Nov.	2 Dec.	9 Dec.	16 Dec.	23 Dec.	30 Dec.	6 Jan.	13 Jan.	20 Jan.	27 Jan.	3 Feb.	10 Feb.	17 Feb.	24 Feb.

Week	9	10	11	12	13	14	15	16
Date	3 Mar.	10 Mar.	17 Mar.	24 Mar.	31 Mar.	7 Apr.	14 Apr.	21 Apr.

\*Total number of weeks for the evaluation was 22.

Table 5, Continued.

Species:	Cultivar	Source	Weekly ratings (week of the year) and degree of flowering																Wks in bloom*					
			48	49	50	51	52	53	1	2	3	4	5	6	7	8	9	10		11	12	13	14	15
P	Universal Plus Red Blotch	GOLD	3	3	3-	2.5-	2.5	2.5	2.5-	3	2.5	2.5	2.5	2.5	2	2	2	2	2	2.5	2.5	2.5	2.5	19
P	Maxim Supreme Red	SAK	3-	3	3	3	3	3	3	3-	2.5-	2.5-	2.5	2.5	2	2	2	2	2	2	2	2	2	18
P	Happy Face Red	BG	3	3	3	2.5-	2.5-	2-	2-	2-	1.5-	1.5-	1.5-	1.5-	1.5-	1.5-	1.5	1.5	1.5	1.5	1.5	1.5	1.5	11
P	Bingo Red Blotch	PA	3	3-	3-	2.5-	2.5-	2-	2-	2-	1-	1-	1-	1.5-	1.5-	1.5-	1.5-	1.5-	1.5	1.5	1.5	1.5	1.5	6
P	Eclipse	AAS	3-	3-	3-	3-	3	3	3	2.5-	2.5	2.5	3	3	3	3	3	3	3	3	3	3	2.5	17
P	98BP05	AAS	3	3	3-	3	3	3	3	3	2.5	2.5	3	3	3	2.5	2.5	2	2	2	2	2	2	21
P	Experimental Red Wing (UXEKV)	FN	3	3	3	3-	3-	3-	3-	2.5-	2.5	2.5	2.5	2.5	2.5	2	2	2	2.5	2	2	2	2	17
P	Experimental Red Wing	FN	3-	3-	3-	3	3	2.5	2.5	2.5	2.5	2.5	3	3	3	2.5	3	3	3	3	3	3	3	19
P	Bingo Red & Yellow	PA	3	3-	3-	3	3	2.5	2.5	2.5	2.5	2.5	2.5	2.5	2	2	2.5	2	2	2	2	2	2	20
P	Universal Plus Yellow/Red Blotch	GOLD	3-	3-	3-	3-	2.5-	2.5-	2.5-	2-	2-	2-	2-	2	2	2	2	2	2	2	2	2	2	11
P	Universal Plus Red Wing	GOLD	3-	3-	3-	3	3	3	3	3	3	3	3	3	3	3	3	3	3	3	3	3	3	19
P	Accord Yellow/Red Blotch	GOLD	3-	3-	3	3	3	3	3	3	3	3	3	3	3	3	3	3	2	2	2	2	2	20
P	Accord Red Wing	GOLD	3	3	3	3	3	3	3	2.5	3	3	3	2.5	2.5	2.5	2.5	2.5	2	2	2	2	2	22
P	Jema Red & Yellow	FN	3	3	3-	3-	2.5-	2.5-	2.5-	2-	2-	2-	2-	2-	2-	1.5-	1.5-	1.5-	1.5	1	1	1	1	8
P	Jema Red Shades	FN	3-	3-	3	3-	3	3	3	3	3	3	3	3	3	2.5	2.5	2.5	2.5	2.5	2.5	2.5	2.5	19
P	Crystal Bowl Supreme Sky Blue	SAK	3-	3-	3	3	3	3.5	3.5	3.5	3.5	3.5	3.5	3.5	4	4	4	4	4	4	4.5	4.5	4.5	20
P	Universal Plus Light Blue	GOLD	3	3	3	3	3	3	3	3	3	3	3	3.5	4	4	4	4	4	3.5	3.5	3.5	3.5	22
P	Fama Silver Blue	BEN	3-	3-	3	3	3	3	3	3	3	3	3.5	3.5	3.5	3.5	3.5	3.5	3.5	3.5	4	4	4	20
P	Baby Bingo Sky Blue	PA	3	3	3	3	3	3	3	3	3	3	3.5	3.5	3.5	3.5	3.5	3.5	3.5	3.5	3.5	4	4	22
P	Bingo Azure Clear	PA	3	3	3	3	3	3	3	3	3	3	3	3	3	3	3.5	3.5	3.5	3.5	3.5	3.5	3.5	22
P	Atlas Blue Splash	BG	3	3-	3	3	3	3	3	3	3	3	3	3.5	3.5	3.5	3.5	3.5	3.5	3	3	3	3	21
P	Baby Bingo Lavender Blue	PA	3	3	3	3	3.5	3.5	3.5	3.5	3.5	3.5	4	4	4.5	4.5	4.5	4.5	4.5	4.5	4.5	4.5	5	22
P	Universal Plus Marina	GOLD	3	3-	3	3	3.5	3.5	3.5	3.5	3.5	3.5	4	4	4	4.5	4.5	4.5	4.5	4.5	4.5	4.5	4.5	21
P	Baby Bingo Denim	PA	3	3	3	3	3	3	3	3	3.5	3.5	4	4	4	4.5	4.5	4.5	4.5	4.5	4.5	4.5	4.5	22
P	Fama Blue Angel	BEN	3-	3-	3	3	3	3	3	3	3.5	3.5	3.5	4	4	4	4.5	4.5	4.5	4.5	4.5	4.5	4.5	20
P	Crystal Bowl Supreme True Blue	SAK	3-	3-	3	3	3	3	3	3	3	3.5	3.5	4	4	4	4	4	4	4	4.5	4.5	4.5	20
P	Atlas Blue	BG	3	3	3	3	3	3	3	3	3	3.5	3.5	4	4	4	4	4	4	4	4	4	3.5	22
P	Crystal Bowl True Blue Impr	SAK	3-	3	3	3	3	3	3	3	3	3	3.5	3.5	3.5	4	4	4	4	4	4	4	4	21

Week	48	49	50	51	52	53	1	2	3	4	5	6	7	8
Date	24 Nov.	2 Dec.	9 Dec.	16 Dec.	23 Dec.	30 Dec.	6 Jan.	13 Jan.	20 Jan.	27 Jan.	3 Feb.	10 Feb.	17 Feb.	24 Feb.

Week	9	10	11	12	13	14	15	16
Date	3 Mar.	10 Mar.	17 Mar.	24 Mar.	31 Mar.	7 Apr.	14 Apr.	21 Apr.

**\*Total number of weeks for the evaluation was 22.**

Table 5, Continued.

Species:	Cultivar	Source	Weekly ratings (week of the year) and degree of flowering																		Wks in bloom*			
			48	49	50	51	52	53	1	2	3	4	5	6	7	8	9	10	11	12		13	14	15
P	Delta True Blue Improved	NOV	3-	3-	3	3	3	3	3	3	3	3	3	3.5	3.5	3.5	3.5	3.5	3.5	3.5	4	4	4	20
P	Fama True Blue	BEN	3-	3-	3-	3	3	3	3	3	3	3	3	3.5	3.5	3.5	3.5	3.5	3.5	3.5	3.5	3.5	4	19
P	Delta Pure Light Blue	NOV	3-	3	3	3	3	3	3	3	3	3	3	3	3	3	3.5	3.5	3.5	3.5	3.5	3.5	3.5	21
P	Crystal Bowl Sky Blue	SAK	3-	3-	3-	2.5-	2.5-	2-	2-	2-	2	1.5	1.5	1.5	1.5	1.5	1.5	1.5	2	2.5	2.5	3	3	13
P	Baby Bingo Midnight	PA	3-	3	3	3	3	3	3.5	3.5	3	3	3.5	3.5	3.5	3.5	3.5	3.5	3.5	4	4.5	4.5	4.5	21
P	Maxim Supreme Marina	SAK	3-	3-	3	3	3	3	3.5	3.5	3.5	3.5	3.5	3.5	3.5	3.5	4	4	4	4	4	4	4	20
P	Bingo Blue Light Blotch	PA	3	3	3	3	3	3	3	3	3	3	3	3.5	3.5	3.5	3.5	3.5	3.5	3.5	3.5	3.5	3.5	22
P	Maxim Marina	SAK	3-	3	3	3	3.5	3.5	3.5	3.5	3.5	4	4	4	4	4	4.5	4.5	4.5	4.5	4.5	4.5	4.5	21
P	Maxim Supreme Blue	SAK	3	3	3	3	3.5	3.5	3.5	3.5	3.5	3.5	4	4	4	4	4	4	4	4	4	4	4	22
P	Accord Blue Blotch	GOLD	3-	3-	3	3	3	3	3	3.5	3.5	3.5	3.5	4	4	4	4	4	4	4	4	4	4	20
P	Experimental Delft (UXEGT)	FN	3-	3-	3	3	3	3	3	3	3.5	3.5	3.5	3.5	4	4	4	4	4	4	3.5	4	4	20
P	Ultima Beacon Blue	SAK	3-	3-	3	3	3	3	3	3	3	3	3.5	4	4	4	4	4	4	4	4	4	4.5	20
P	Maxim Blue	SAK	3	3-	3-	3-	3	3	3	3	3	3.5	3	3.5	3.5	3.5	3.5	3.5	3.5	3.5	4	4	4	19
P	Dancer Blue Blotch	BALL	3	3	3	3	3	3	3.5	3.5	3.5	3.5	3.5	3.5	3.5	3.5	3.5	3.5	3.5	3.5	3.5	3.5	3.5	22
P	Bingo Blue w/Blotch	PA	3	3	3	3	3	3	3	3	3	3	3	3.5	3.5	3.5	3.5	3.5	3.5	3.5	4	4	4	22
P	Happy Face Marina	BG	3-	3-	3	3	3	3	3	3	3	3	3	3	3	3	3	3	3	3	3	3.5	3.5	20
P	Happy Face Blue	BG	3	3-	3	3	3	3	3	3	3	2.5	2.5	3	3	3	3	3	3	3.5	3.5	3.5	3.5	21
P	Delta Deep Blue w/Blotch	NOV	3	3	3	3	3	3	3	3	3	3	3	3	3	3	3.5	3	3	3	3	3	3	22
P	Experimental Blue Blotch	FN	3-	3-	3	3	3	3	3	3	3	3	3	3	3	3	3	3	3	3	3	3	3	20
P	Experimental Deep Blue Blotch	FN	3-	3-	3	3	3	3	3	3	3	3	3	3	3	3	3	3	3	3	3	3	3	20
P	Bingo Blue Frost	PA	3	3	3	3	3	3	3	3	3.5	3.5	3.5	3.5	3.5	3.5	3.5	3.5	3.5	3.5	4	4	4	22
P	Experimental Blue Wing	FN	3	3-	3	3	3	3	3	3	3	3	3	3	3	3	3	3	3	2.5	3	3	3	21
P	Baby Bingo Winter Blues Mix	PA	3	3-	3	3	3	3	3	3	3	3	3.5	4	4	4	4	4	4	4.5	4.5	4.5	4.5	21
P	Jema Blue Shades	FN	3-	3-	3	3	3	3	3	3	3	3	3	3	3	3	3	3	2.5	3	3	3	3	20
P	Universal Plus Lavender	GOLD	3	3	3	3	3	3	3	3	3	3	3	3	2	2	2	2.5	2.5	2	2	2	2	22
P	Fama Purple	BEN	3-	3-	3	3	3	3	3.5	3.5	3.5	3.5	3.5	3.5	3.5	3.5	4	4	4	4.5	4.5	4.5	4.5	20
P	Purple Rain	PA	3	3	3	3	3	3	3.5	3.5	3.5	3.5	4	4	4	4	3.5	3.5	3.5	3.5	3.5	3.5	3	22
P	Clear Sky Purple	NOV	3-	3-	3	3	3	3	3	3	3	3	3.5	3.5	3.5	3.5	3.5	3.5	3.5	3.5	3.5	3.5	3.5	20

Week	48	49	50	51	52	53	1	2	3	4	5	6	7	8
Date	24 Nov.	2 Dec.	9 Dec.	16 Dec.	23 Dec.	30 Dec.	6 Jan.	13 Jan.	20 Jan.	27 Jan.	3 Feb.	10 Feb.	17 Feb.	24 Feb.

Week	9	10	11	12	13	14	15	16
Date	3 Mar.	10 Mar.	17 Mar.	24 Mar.	31 Mar.	7 Apr.	14 Apr.	21 Apr.

\*Total number of weeks for the evaluation was 22.

Table 5, Continued.

Species:	Cultivar	Source	Weekly ratings (week of the year) and degree of flowering																Wks in bloom*							
			48	49	50	51	52	53	1	2	3	4	5	6	7	8	9	10		11	12	13	14	15	16	
P	Atlas Purple	BG	3	3	3	3	3	3	3	3	3	3	3	3	2.5	2.5	2	2	2	2	2	2.5	2.5	2.5	22	
P	Delta Pure Violet	NOV	3	3-	3	3	3	3	3	3	3	3	3	3	2	2	2	2	2	2	2	2.5	2.5	2.5	21	
P	Bingo Deep Purple	PA	3	3	3-	3-	3	2.5	2.5	2	2	2	2	2	2	2	1.5	1.5	1.5	1.5	2	2	2	2	20	
P	Rally Lilac Cap	PA	3	3	3	3	3	3.5	3.5	3.5	3.5	3.5	3.5	3.5	3.5	3.5	3.5	4	4	4	4	4	4	4	22	
P	Universal Plus Violet Blotch	GOLD	3-	3-	3	3	3	3	3.5	3.5	3.5	3.5	3.5	4	4.5	4.5	4.5	4.5	4.5	4.5	5	5	5	4.5	20	
P	Purple Jester	PA	3	3	3	3	3.5	3.5	3.5	3.5	3.5	3.5	4	4	4.5	4.5	4.5	4.5	4	4	4	4.5	4.5	4.5	22	
P	Jema Violet Blue	FN	3	3	3	3	3	3.5-	3.5	3.5	3.5	3.5	3.5	3.5	3.5	3.5	3.5	3.5	3.5	3.5	3.5	3.5	3.5	3.5	21	
P	Accord Violet with Face	GOLD	3-	3	3-	3-	3	3	3	3	3	3	3	3	3.5	4	3.5	3	3	3	3	3	3.5	3.5	19	
P	Experimental Violet Blotch	FN	3-	3-	3-	3-	3	3	3	3-	3-	3-	3	3	3	3	3	3	3	3	3	3	3	3	15	
P	Happy Face Purple	BG	3	3-	3	3	3	3	3	2.5	2	2	2.5	2.5	2.5	2	2	2	2.5	2.5	2.5	3	3	3	21	
P	Fama Lilac Shades	BEN	3-	3-	3	3	3.5	3.5	3.5	3.5	3.5	3.5	4	4	4	4	4	4	4	4	4.5	5	5	5	20	
P	Lavender Cool Shades	BALL	3-	3	3	3	3	3	3	3	3	3	3	3	3.5	3.5	3.5	3.5	3.5	3.5	4	4.5	4.5	4.5	21	
P	Halloween	PA	3	3	3	3	3.5	3.5	3.5	3.5	3.5	3.5	3.5	4	4	4	4	4	4	4	4	4.5	4.5	4.5	22	
P	Trick or Treat Mix	PA	3	3	3	3	3	3	3	3	3	3	3	3	3	3	3.5	3.5	3.5	3.5	3.5	3.5	3.5	3.5	22	
P	Fama Love Song	BEN	3-	3-	3	3	3	3	3	3	3	3.5	3.5	3.5	3.5	3.5	3.5	3.5	3.5	3.5	4	4	4	4	20	
P	Accord Clear Mix	GOLD	3	3	3-	3	3	3.5	3	3	3	3	3.5	4	4	3.5	3.5	3.5	3.5	3.5	3.5	3.5	3.5	3.5	21	
P	Universal Plus Citrus Mix	GOLD	3	3	3	3	3	3	3	3	3	3	3	3	3	3	3.5	3.5	3.5	3.5	3.5	3.5	3.5	3.5	22	
P	Universal Plus Blotch Mix	GOLD	3-	3-	3	3	3	3	3	3	3	3	3.5	3.5	4	4	4	4	4	4	4	4	4	4	20	
P	Accord Blotch Mix	GOLD	3	3	3	3	3	3	3	3	3	3.5	3.5	3.5	3.5	3.5	3.5	3.5	3.5	3.5	3.5	3.5	3	3	22	
P	Bingo Blotch Mix	PA	3	3	3	3	2.5	2.5	2.5	2.5-	2.5	2.5	3	3	3	3	3	3	3	3	2.5	2.5	2.5	2.5	21	
P	Accord Mix	GOLD	3	3	3	3	3	2.5	3	3	3	3	3.5	3.5	3.5	3.5	3.5	3.5	3.5	3	3	3	3	3	22	
P	Universal Plus Mix	GOLD	3-	3-	3	3-	3	3	3	3	3	2.5	3	3	3	3	3	3	3	3	3	3	3	3	19	
P	Bingo Mix	PA	3	3-	3	3	3	3	3	3-	3	2.5	2.5	2.5	2.5	2.5	2.5	2.5	2.5	2.5	2.5	2.5	2	2	20	
V	Splendid White	SAK	3-	3-	3	3	3	3	3.5	3.5	3.5	3.5	3.5	3.5	3.5	3.5	3.5	3.5	3.5	4	4	4	4	4.5	4	20
V	Penny Orchid Frost	GOLD	3	3	3	3	3.5	3.5	3.5	3.5	3.5	3.5	4	4	4	4	4	4	4	4	4.5	4.5	4.5	4.5	22	
V	Penny Azure Wings	GOLD	3	3	3	3	3.5	3.5	3.5	3.5	3.5	3.5	4	4	4.5	4.5	4.5	4.5	4.5	5	5	5	5	5	22	
V	Splendid Blue & Yellow	SAK	3-	3	3	3	3.5	3.5	3.5	3.5	3.5	3.5	4	4	4.5	4.5	4.5	4.5	4.5	5	5	5	5	5	21	
V	Penny Violet Beacon	GOLD	3	3	3	3	3	3.5	3.5	3.5	3.5	3.5	4	4	4.5	4.5	4.5	4.5	4.5	5	5	5	5	5	22	

Week	48	49	50	51	52	53	1	2	3	4	5	6	7	8
Date	24 Nov.	2 Dec.	9 Dec.	16 Dec.	23 Dec.	30 Dec.	6 Jan.	13 Jan.	20 Jan.	27 Jan.	3 Feb.	10 Feb.	17 Feb.	24 Feb.

Week	9	10	11	12	13	14	15	16
Date	3 Mar.	10 Mar.	17 Mar.	24 Mar.	31 Mar.	7 Apr.	14 Apr.	21 Apr.

\*Total number of weeks for the evaluation was 22.

Table 5, Continued.

Species:	Cultivar	Source	Weekly ratings (week of the year) and degree of flowering																				Wks in bloom*		
			48	49	50	51	52	53	1	2	3	4	5	6	7	8	9	10	11	12	13	14		15	16
V	Experimental Purple Wing	FN	3-	3-	3	2.5	2.5	3	3-	3	3	3	3	3.5	3.5	3.5	3.5	3.5	3.5	3	3	2.5	2.5	19	
V	Penny Primrose	GOLD	3	3	3	3	3	3.5	3.5	3.5	3.5	3.5	3.5	4	4	4	4	4	4	4	4	4	4.5	4.5	22
V	Sorbet Yellow Delight	WALL	3	3	3	3	3	3.5	3.5	3.5	4	4	4	4.5	4.5	4.5	4.5	4.5	4.5	4.5	5	5	5	5	22
V	Penny Yellow	GOLD	3	3	3	3	3	3	3.5	3.5	3.5	3.5	3.5	3.5	4	4	4	4	4	4	4	4.5	4.5	4.5	22
V	Splendid Yellow	SAK	3-	3	3	3	3	3	3	3	3	3	3	3.5	3.5	3.5	3.5	3.5	3.5	3.5	3.5	4	4	21	
V	Experimental Silver	FN	3-	3-	3	3-	3	3	3	3	3	3.5	3.5	3.5	4	4	4	4	4	4	4	4.5	4.5	4.5	19
V	Penny Blue	GOLD	3	3	3	3	3	3.5	3.5	3.5	3.5	3.5	4	4	4.5	4.5	4.5	4.5	4.5	4	4	4.5	5	5	22
V	Moonbeam	FN	3-	3-	3-	3-	3	3	3	3	3	3	3.5	4	4	4	4	4	4	4	4	4	4	4	18
V	Penny Violet Flare	GOLD	3	3	3	3	3.5	3.5	3.5	3.5	3.5	3.5	4	4	4.5	4.5	4.5	4.5	4.5	5	5	5	5	5	22
V	Jewel Mix	AT	3	3	3	3	3	3.5	3.5	3.5	3.5	3.5	4	4	4.5	4.5	4.5	4.5	4.5	4.5	5	5	5	5	22
V	Penny Lane Mix	GOLD	3	3	3	3	3	3.5	3.5	3.5	3.5	3.5	4	4	4	4	4.5	4.5	4.5	4.5	5	5	5	5	22

23

Week	48	49	50	51	52	53	1	2	3	4	5	6	7	8
Date	24 Nov.	2 Dec.	9 Dec.	16 Dec.	23 Dec.	30 Dec.	6 Jan.	13 Jan.	20 Jan.	27 Jan.	3 Feb.	10 Feb.	17 Feb.	24 Feb.
Week	9	10	11	12	13	14	15	16						
Date	3 Mar.	10 Mar.	17 Mar.	24 Mar.	31 Mar.	7 Apr.	14 Apr.	21 Apr.						

\*Total number of weeks for the evaluation was 22.