

# 1.1 Project Area Map

Tar Pam Watershed Assessment  
BLWI Project Number: 030037  
Edgecombe, Martin, and Pitt Counties  
North Carolina  
December 2003  
Scale 1" = 4.5 miles

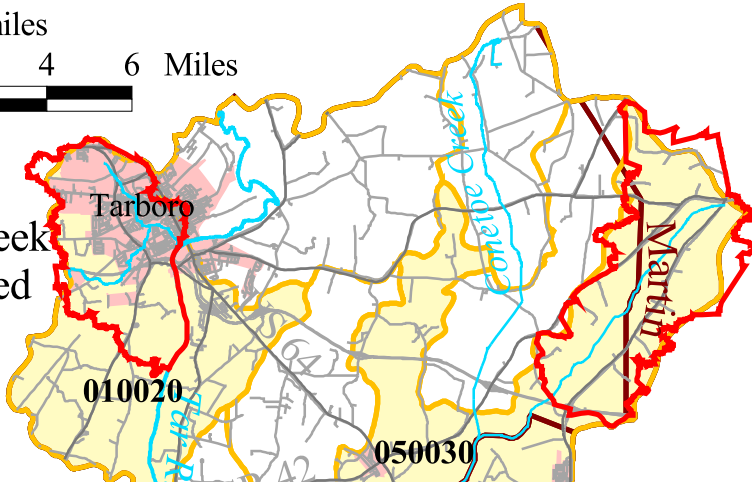
**BLUE** Land Water Infrastructure



2 0 2 4 6 Miles



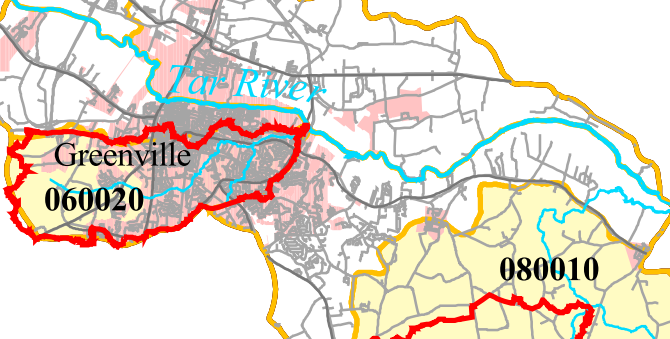
Hendricks Creek Subwatershed



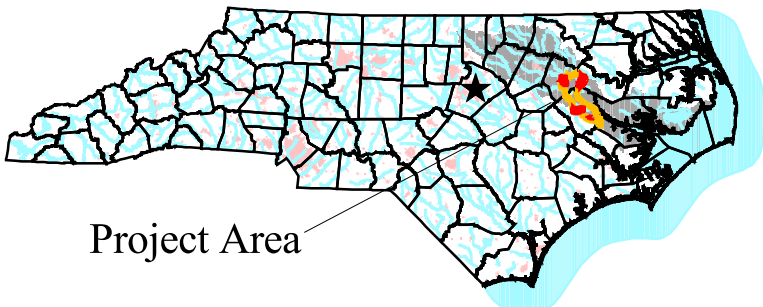
Crisp Creek Subwatershed

- Subwatershed Boundary
- Targeted 14-digit Hydrologic Unit
- 14-digit Hydrologic Unit Boundaries
- Municipal Boundary
- County Boundary

Green Mill Run Subwatershed



Cow Swamp Subwatershed



Project Area