

# Cathey's Creek Newsletter

## Planning is Complete- Implementation Begins!

The Cathey's Creek Watershed Advisory Committee met on May 5 to review and discuss the draft Cathey's Creek Watershed Management Plan, and to determine how to move forward with implementation.

Jane Almon's (Earth Tech) presentation of the watershed plan is summarized in this newsletter. The group provided some suggestions for editing the plan. Earth Tech will incorporate the suggested edits and finalize the plan in early July, at which time it will be posted on the project website. Jane's entire presentation can be viewed on the project website as well at:

[Www.ces.ncsu.edu/WECO/catheys](http://www.ces.ncsu.edu/WECO/catheys)

The group discussed factors that could help or hinder the watershed plan's implementation, and how they could harness those factors. They decided that the team should focus on implementing stormwater management projects at the local high school, involving students throughout the process. They also asked the team to host a public workshop when school is back in session, to introduce the public to the Watershed Plan and recruit their help in protecting and restoring the watershed.

The planning phase of this watershed plan is complete, and Earth Tech and Watershed Education for Communities and Officials (WECO) finish their contracts with the Ecosystem Enhancement Program (EEP) with the public workshop. They will be handing the baton to Deborah Daniel, EEP, who will be overseeing implementation of EEP projects in the watershed, which include stream and wetland restoration projects, and potentially some stormwater best management practices (BMPs). Other projects identified in the plan, including watershed education, forestry BMPs, residential stormwater BMPs, will need to be driven by local initiatives. Successful implementation requires broad community involvement.

Thank you for everyone's help and we look forward to seeing you at the public workshop- 6:00 p.m. Tuesday, August 30, 2005 at the Rutherford-Spindale Central High School!

## Workshop Notice:

**A Watershed Workshop will be held August 30, 2005 6:00 p.m. at Rutherford- Spindale Central High School.**

**The workshop is an open house, with an introductory presentation at 6:30.**



## Inside this issue:

<i>Intro to newsletter/update</i>	1
<i>Overview of Draft Watershed Plan</i>	1-3
<i>Headwinds and Tailwinds for implementing plan</i>	4-5
<i>Next Steps to move from planning to implementation</i>	5
<i>List of meeting participants</i>	6

## Overview of Draft Watershed Plan

Jane Almon, Earth Tech, provided an overview of the draft watershed plan recommendations. Participants should have received a copy of the draft plan in the mail before the meeting. The products from Earth Tech's work on the project include

1. Watershed characterization (Feb 2004)
2. Critical Areas Analysis (Feb 2005)
3. Draft Watershed Management Plan (April 2005).

These products and Jane's presentation are online at [http://www.ces.ncsu.edu/depts/agecon/WECO/Catheys\\_Creek/](http://www.ces.ncsu.edu/depts/agecon/WECO/Catheys_Creek/)

The purpose of the Watershed Plan is to restore and maintain three main watershed functions- water quality, hydrology, and wildlife habitat. The watershed stressors investigated included sedimentation, point source pollution, stormwater runoff, and gold mining.

## Overview of watershed plan, continued

At the last advisory committee meeting, the group chose four subwatersheds for which detailed watershed restoration plans were to be completed. These subwatersheds include:

- Subwatershed One: contains headwaters to Mill Creek
- Subwatershed Eight: contains tributaries to Cathey's Creek and William Branch
- Subwatershed Nine: includes the headwaters of Holland's Creek
- Subwatershed Thirteen: which includes Holland's Creek, Case Branch, and Reynolds Creek

Jane provided an overview of the strategies proposed in each subwatershed.

*Subwatershed One: contains headwaters to Mill Creek*

Goal: Reduce upland and instream sediment load to Mill Creek and tributaries

Strategy:

- Sediment and erosion BMPs
- Forested buffers on streambanks
- Cattle exclusion
- Stream restoration

Additional information: A mostly forested watershed in the headwaters– very important to maintain or improve its level of function since benefits carry down the entire Cathey's creek. Build on NRCS successes in this subwatershed.

*Subwatershed Eight: contains tributaries to Cathey's Creek and William Branch*

Goals: Reduce upland sediment load to William Crk, Reduce sediment from airport

Strategy:

- Sediment and erosion BMPs
- Forested buffers
- Cattle exclusion
- Stormwater BMP retrofits and new design

*Rutherford County is considered a rural county with abundant open space, natural forests, lakes and farm land.*

*-Rutherford Co.Econ.Development Comm.  
www.rutherfordncedc.com*

*Subwatershed Nine: the headwaters of Holland's Creek*

Goals: Reduce sediment load to Holland's Creek, Reduce stormwater from industrial and institutional facilities, Reduce nitrogen, phosphorus, and metals export

Strategy:

- Industrial/institutional BMPs
- Residential stormwater BMPs

Additional information: Several opportunities exist at R-S Central High School for BMPs, making it an ideal location. Ideas include bioretention areas (rain gardens) and stormwater wetlands.

*Subwatershed Thirteen: includes Holland's Creek*

Goals: Eliminate pollution from illegal dumping, Minimize pollution from hotspots, eliminate fecal coliform contamination, reduce stormwater from commercial and residential areas, reduce nitrogen, phosphorus and metals export, reduce sediment load to Holland's Creek

Strategy:

- Commercial/industrial stormwater BMPs
- Residential stormwater BMPs
- Sediment and erosion BMPs
- Forested buffers
- Stream restoration
- Cattle exclusion

Additional information: This is a highly urban stream, so strategies are focused upon urban solutions.

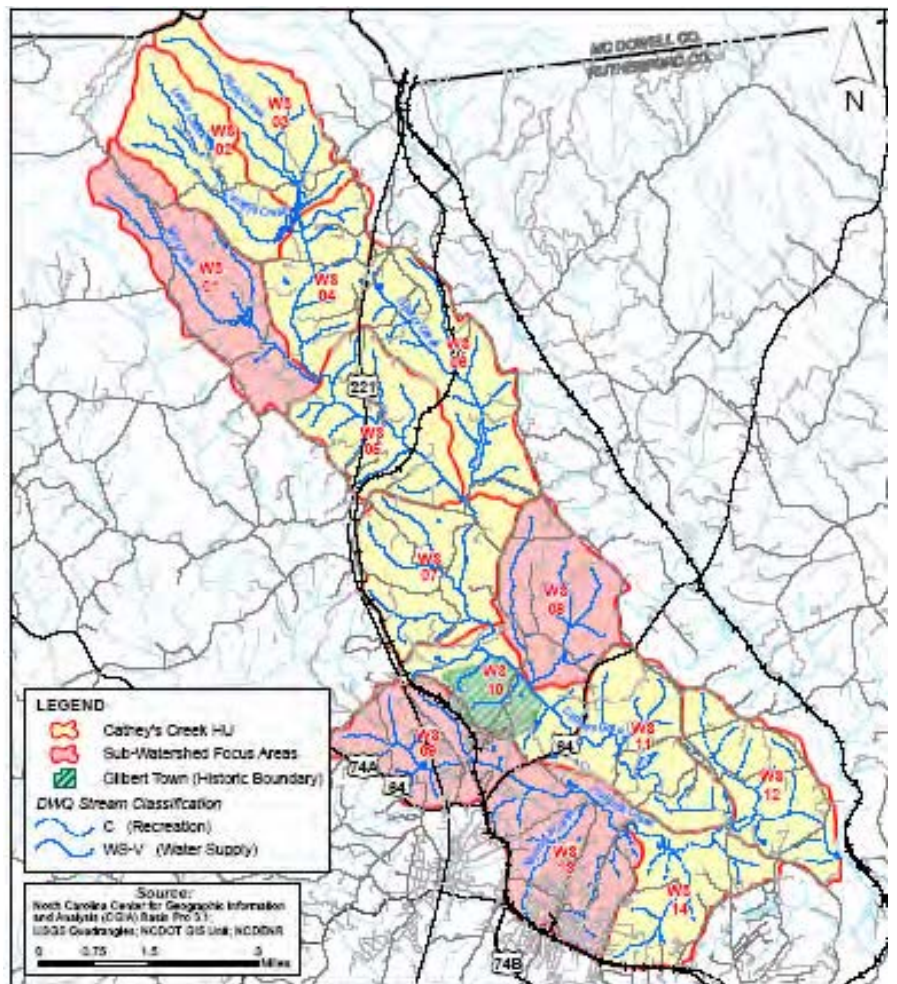
### ***Overview of Recommendations for Specific Projects:***

- Stream restoration/enhancement projects
- Stormwater Best Management Practice (BMP) retrofits
  - ⇒ Airport
  - ⇒ High school
  - ⇒ Tanner Companies' site
  - ⇒ Roads/bridges

### ***Recommendations for Adopting Practices***

- Agricultural BMPs
  - ⇒ Livestock exclusion
  - ⇒ Row crop BMPs
- Forestry BMPs
- Sedimentation and Erosion Control on land cleaning activities
- Employ residential best management practices (in Holland Crk in particular)
  - ⇒ Rainwater collection
  - ⇒ Careful fertilizer application
  - ⇒ Landscaping for water quality
  - ⇒ Pet waste disposal

Four Subwatersheds Highlighted for Detailed Restoration Plans



## Watershed plan continued

The group was asked if they had any feedback regarding the recommendations. The following comments were made:

*Regarding Spindale Wastewater Treatment Plant:* Concern that the report misrepresents the Town of Spindale’s wastewater treatment plant as not meeting regulatory requirements, when it is. Concerns included the findings of impaired biological communities and high fecal coliform, which do not match data collected by the treatment plant. The project team explained that the state’s bio-sampling methods differ from those of the treatment plant, so the results will not be the same. The state’s sampling sites were also not in the exact same places as those sampled by the treatment plant.

*Action Item:* Jane Almon and Andrea Leslie will edit the language concerning the wastewater treatment plant to clarify that the plant is in compliance with existing regulations.

*Forestry BMPS:* Greg Smith asked for an edit to page 12 of the plan, to change the wording from “especially when the clear cutting method of harvesting is employed” to “especially when forest practice guidelines are not followed. If the guidelines are not followed, landowners are not exempt from the Sediment and Pollution Control Act. The NC Division of Forest Resources (NCDNR) has an established program in place to provide assistance as requested by landowners who plan to harvest Timber. NCDNR is also responsible for enforcing the Forest Practice Guidelines.” Greg pointed out that whether clear cut or selective cut methods are used, most sediment comes from forestry logging roads.

*Action Item:* Further comments received from CCRC following the meeting required re-writing the section on forest practices to incorporate NCDNR and CCRC’s comments (both parties agreed on the re-write, which will be in the final plan).

## Headwinds and Tailwinds

Christy asked the Committee to consider the forces that will help get the plan implemented (tailwinds), and the forces that will prevent the plan from being implemented. These included (comments have been compiled and summarized):

### *Headwinds (opposing forces):*

- Rutherford County is 5<sup>th</sup> or 6<sup>th</sup> in unemployment so watershed restoration would be low on totem pole
- Spindale is hurting economically
- \*Focus on economic development\*
- Cost of implementation could be perceived as a factor
- Residential homeowners may not understand (emphasize financial help – helping community)

### *Tailwinds (helping forces):*

- Travis Ringo, SWCD, is a resource
- Bovender farm is a success story (owners Nell & Tim are champions)
- NCEEP can pay for stream restoration with willing landowners, and possibly BMPs (100% funded, requires permanent easements, with some activities allowed in easements) and can be used for match on grants
- Grant proposals backed by watershed plans are often well-received
- Could help by giving local communities idea of where to get funds
- Brandon Higgins at R-S Central High School is interested in partnering
- CCRC, Upper Broad River group may be champions

- Greenways Recreational plan in progress – Over Mtn. Victory Trail, Gilbert Town are opportunities, and TEA 21 (NCDOT program) is a potential funding source (Town of Fletcher used this for greenways)
- *Realize Rutherford*, the local visioning plan, could provide an opportunity for coordination
- May improve quality of life

One of the most effective ways to make progress is to try to remove the opposing forces when trying to make progress, since the present situation is held in place by opposing forces. If those forces are altered, the situation will change. The group discussed ways to address the connection between watershed improvements and economic benefit. They discussed the option of concentrating on industrial and commercial areas. Industries being targeted for recruitment in the area include plastics and molding businesses, and biotechnology. The Business Technology Center is a way to prepare people for the work force.

Recreation was mentioned as critical for attracting people to the County. Participants discussed how the Bypass could provide an opportunity to partner with NCDOT for TEA 21 funds for pedestrian/bicycle facilities, linking Gilberttown with other areas. One idea is for a potential visitor's center located off the bypass within the watershed.

*The health of our waters is the principal measure of how we live on the land.*

*-Luna Leopold*

## Moving from Planning to Implementation: Next Steps

### *Target a project at Rutherford-Spindale Central High School*

The group overwhelmingly thought that working with the schools is the best way to start implementing the watershed plan, to maximize educational benefits. One project identified in the watershed plan is to manage stormwater at Rutherford-Spindale Central High School with Best Management Practices (BMPs) such as rain gardens.

Participants proposed siting a storm water control project at R-S Central, and involving students from the other two high schools, East Rutherford and Chase. Other ideas included inviting students to design signage, emphasizing cost savings of collecting rainwater (as was done at the NC Legislative Building), and publicly highlighting work currently being completed by the SWCD, farmers, and industry.

*Action item: Andrea and Debbie will check within NCEEP to see if they can pay for a stormwater project at the high school. If not, the project team will investigate grant sources for the project. They will work with Brandon Higgins as the school contact.*

### *Target NCEEP Restoration Projects*

It would help if local citizens can help Debbie Daniel find additional restoration sites, and make contact with landowners. Projects are preferred in the Cathey's Creek watershed, but other projects county-wide will be considered. Criteria for NCEEP funded projects are listed in the Watershed Plan Appendix B. Minimum requirements for a stream restoration project with NCEEP are 30-50 foot conservation easements (acquired via donation, purchase of easements, or outright purchase of the land) on both sides of a stream. The minimum length for a stream restoration project is 1,500- 2,000 linear feet. Debbie spent a minute providing an overview of how projects are implemented.



### *Public Workshop*

WECO and EEP asked the group whether a public workshop was needed to bring the results of the plan to the public. The group agreed that a workshop would be useful and provided the following suggestions:

- Highlight the cost incentives for improving property (increasing land value for example)
- Make the connection about reducing flooding during storms
- Present the watershed plan briefly
- Lake Lure recently hosted a "Landslide Workshop" for contractors, developers, realtors. Could be a model.
- Ask Clint Calhoun how to get people to workshops since he has held similar ones.
- Target the meeting for harvest time.
- Personalize the workshop with handouts targeting different audiences- farmers, residential landowners, timber harvesters.
- Have different displays- NCDWQ, NCDFR
- Try to find a band to play, and have food
- Use layperson's terminology- just present basic information and provide ways to learn more
- Hold the workshop at a school and involve students
- Cathey's Creek Watershed Committee members should co-host and attend the workshop, and invite other citizens.

***Action Item: The project team will plan a workshop to be held on August 30, 2005 at R-S Central High School.***

*They will contact Committee members by email and phone between now and then to plan the workshop.*

Watershed Education for Communities  
and Local Officials  
Campus Box 8109  
Raleigh, NC 27695-8109

Phone: 919-515-4542  
Email: christy\_perrin@ncsu.edu  
Patrick\_beggs@ncsu.edu

**We're on the web!**  
[www.ces.ncsu.edu/WECO/catheys](http://www.ces.ncsu.edu/WECO/catheys)



### **Participants of May 5 , 2005 meeting**

Pat Allen, Union Mills Learning Center  
Patrick Beggs, WECO; NCSU  
Debbie Daniel, NCEEP  
Dan Line, NCSU Dept. Bio & Ag. Engineering  
Bill Hodge, Town of Spindale  
Josh Humphries, Daily Courier  
Andrea Leslie, NCEEP  
John Lewis, Town of Spindale  
Jan McGuin, NCCES Rutherford County  
Christy Perrin, WECO; NCSU  
Travis Ringo, Rutherford SWCD  
Danny Searcy, Rutherford County  
Greg Smith, NC Forest Service  
Jerry Stensland, Rutherford Outdoor Coalition,  
CCRC  
Mary Stone, NC Div. Water Quality

Thank you for your interest and  
participation in the Cathey's Creek  
Watershed Planning Process.

Enjoy your summer- we'll look forward to  
seeing you at the August 30 workshop!